

BALDOR® • RELIANCE 

Product Information Order

35E5592Q416G1

40M 2P TEFC VER 145TCZ SUPER E

| | |
|-----------------------|----------------------|
| Sales Order #: | 1208711853-10 |
| Customer Name: | PACER PUMPS |

PRELIMINARY DATA

P-62-1258

ABB Motors and Mechanical Inc. DATA TRANSMITTAL AND CERTIFICATION

| | | | |
|-----------------------------------------------------------------------------------------------------------------------------------------------------------------------------------------------------------------------------------------------------------------------------------------------------------------|----------------------------------|---------------------------------------------------|--------------------------------|
| Sales Order Number 1208711853-10 | Customer Number 231154 | Customer Order Number 42936-00 (4 OF 6) | P.O. Date 12/22/2020 |
| <p>Sold To: PACER PUMPS 41 INDUSTRIAL CIRCLE LANCASTER, PA 17601 United States</p> | | | |
| <p>Data Source: ISSUED BY: Mary Crouch Baldor-Reliance Fort Smith</p> | | | |
| <p><input checked="" type="checkbox"/> PRELIMINARY, DATA FOR CUSTOMER APPROVAL: The associated documents requested on this order are submitted for approval. Please reply promptly or the order could be delayed.</p> <p><input type="checkbox"/> FINAL, APPROVED FOR CONSTRUCTION OR INSTALLATION.</p> | | | |

| | | | |
|------------------------------------------------------------------------------------------------|-----------------------------------------------------------------------------|--------------------------------|----------------------------|
| Ship To: PACER PUMPS 41 INDUSTRIAL CIRCLE LANCASTER, PA 17601 United States | Data Source: ISSUED BY: Mary Crouch Baldor-Reliance Fort Smith | Quantity 1,000 | Frame 145TCZ |
| Application Centrifugal Pump | Quantity 1,000 | Frame 145TCZ | Motor / Gen. D.S.: |
| Elec Type 2 HP | HP 2 HP | Phs 3 | Herz 60 |
| Enclosure TEFC | Time CONT | Temp 40 | Leads Location |
| Rotation Bi-directional | DC Field Excitation | Pwr Cd | Winding Type F-1 |
| Insulation F | Mtg Drive F-1 | Bearing Ball / Ball | S F 1.25 |
| Type | Torque | Enclosure | Insulation |
| Phs | Herz | Phs | Herz |
| Model / Gen. C.D.: | Motor / Gen. C.D.: | Line Voltage PH/Hz/V | FL Amps |

Additional Specifications:

| | |
|----------------------------|------------------------------|
| BASIC CONFIGURATION | |
| Partial Motor Design | No |
| Frame Band | 35 |
| Customer Application | Centrifugal Pump |
| Temp Code | None |
| ELECTRICAL | |
| Ambient Minimum | -25C |
| 208 Volt Nameplate Rating | Usable at 208 Volt |
| Starting Method | Standard Start |
| MOUNTING | |
| Mounting Flange - DE | C-Face |
| Mounting Position | F-1 |
| Frame Mounting | Footless |
| Drive Method | Direct |
| Mounting Orientation | Horizontal |
| Shaft - Special Material | 316 Stainless |
| Shaft - Drill Hole End | Drive End |
| Drill & Tap hole DE Shaft | 5/16-24 UNF 28 RH X .88 DEEP |



ABB Motors and Mechanical Inc. DATA TRANSMITTAL AND CERTIFICATION

| Sales Order Number | Customer Number | Customer Order Number | P.O. Date |
|--------------------------------|----------------------------|-----------------------|------------|
| 1208711853-10 | 231154 | 42936-00 (4 OF 6) | 12/22/2020 |
| BEARINGS | | | |
| Shaft - Special Extension | Yes | | |
| Shaft Extension | TZ - SPECIAL | | |
| Shaft Drawing | OL1110166 | | |
| MECHANICAL | | | |
| Balance | Standard (0.15 in/sec) | | |
| Rotation Facing ODE | Bi-directional | | |
| Stainless Steel Hardware | Yes | | |
| Stainless Steel Hardware Type | 300 Series Stainless | | |
| Fan Material | Standard | | |
| Paint System | Standard (C2) | | |
| Paint Color Specification | Standard Lacquer | | |
| Paint Color | Charcoal Gray Metallic | | |
| Baldor-Reliance Paint Spec No | 004824-007BXYA / MG1000G27 | | |
| MONITORING DEVICES | | | |
| Thermal Protection | None | | |
| CONDUIT BOX | | | |
| Main Conduit Box | Required | | |
| Main Conduit Box Location | Standard (side) | | |
| Main Conduit Box Material | Aluminum | | |
| Main Conduit Box Size | Standard Oversize | | |
| Cbox Entry Hole | No | | |
| Lead Entry NPT | Yes | | |
| Lead Entry NPT Qty | 1 | | |
| Lead Entry NPT Size | (3/4 - 14 NPT) | | |
| Lead Entry Location | Toward Feet - Down | | |
| Conduit Box Lead Entry Plugged | Yes | | |
| Grounding | Yes | | |
| Ground Servit Post | No | | |
| NAMEPLATE / LABELS | | | |
| Nameplate Language | English | | |
| Customer Part Number Marks | Yes | | |
| Customer Part Number | P-62-1258 | | |
| Additional heater Markings | No | | |
| Label "Heater Energized" | No | | |
| Label CSA | Yes | | |
| Label UR | Yes | | |



ABB Motors and Mechanical Inc. DATA TRANSMITTAL AND CERTIFICATION

| | | | |
|--------------------------------------------|----------------------------------|---------------------------------------------------|--------------------------------|
| Sales Order Number 1208711853-10 | Customer Number 231154 | Customer Order Number 42936-00 (4 OF 6) | P.O. Date 12/22/2020 |
|--------------------------------------------|----------------------------------|---------------------------------------------------|--------------------------------|

PACKAGING

Packaging Type Standard Packing

DOCUMENTATION

- Document Unit of Measure US
- Certified Dimension Sheet Yes
- Performance Data/Curves Yes
- Standard Connection Diagram Yes
- Motor Instruction Manual Yes
- Renewal Parts List Yes
- Nameplate Data Yes
- Documentation Format PDF

COMMERCIAL COMMENTS

Estimated Lead Time Estimated Lead Time is based on plant loading at the time of quotation and is intended to be used as a guide for our customers. This estimation includes the Engineering and Manufacturing time only. It DOES NOT include shipping time. Please contact your ABB Motors and Mechanical Inc. representative if specific delivery requirements are needed.



| | |
|--------|---------------------------------------|
| Notes: | Class None Division Not Applicable |
|--------|---------------------------------------|

| Nameplate NP1259L | |
|---------------------|------------------------------------------------------------------------------------------------------------------------------------------------------|
| CAT.NO. | P-62-1258 |
| SPEC. | 35E5592Q416G1 |
| HP | 2 |
| VOLTS | 230/460 |
| AMP | 4.8/2.4 |
| RPM | 3450 |
| FRAME | 145TCZ HZ 60 PH 3 |
| SER.F. | 1.25 CODE L DES B CL F |
| NEMA-NOM-EFF | 86.5 PF 92 |
| RATING | 40C AMB-CONT |
| CC | 010A USABLE AT 208V 2.7 |
| DE | 6205 ODE 6203 |
| ENCL | TEFC SN |
| | SFA 6/3 |

AC Induction Motor Performance Data

Record # 71290

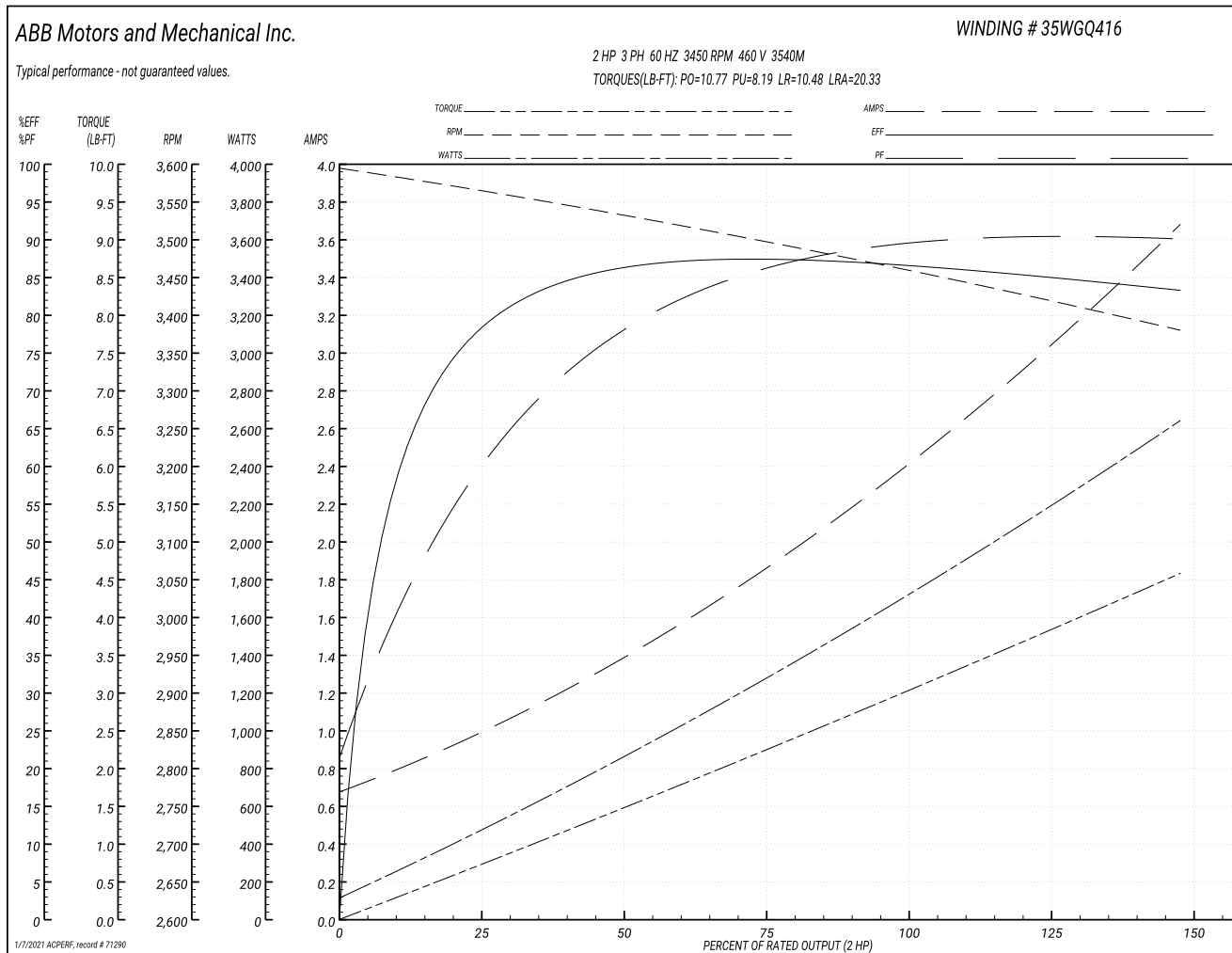
Typical performance - not guaranteed values

| Winding: 35WGQ416-R002 | | Type: 3540M | Enclosure: TEFC |
|------------------------|-------------------|--------------------------------------------------|--------------------------|
| Nameplate Data | | 460 V, 60 Hz: High Voltage Connection | |
| Rated Output (HP) | 2 | Full Load Torque | 3.03 LB-FT |
| Volts | 230/460 | Start Configuration | direct on line |
| Full Load Amps | 4.8/2.4 | Breakdown Torque | 10.77 LB-FT |
| R.P.M. | 3450 | Pull-up Torque | 8.19 LB-FT |
| Hz | 60 Phase | Locked-rotor Torque | 10.48 LB-FT |
| NEMA Design Code | B KVA Code | Starting Current | 20.33 A |
| Service Factor (S.F.) | 1.25 | No-load Current | 0.707 A |
| NEMA Nom. Eff. | 86.5 Power Factor | Line-line Res. @ 25°C | 7.53 Ω |
| Rating - Duty | 40C AMB-CONT | Temp. Rise @ Rated Load | 35°C |
| S.F. Amps | 6/3 | Temp. Rise @ S.F. Load | 43°C |
| | | Locked-rotor Power Factor | 45.1 |
| | | Rotor inertia | 0.111 LB-FT ² |

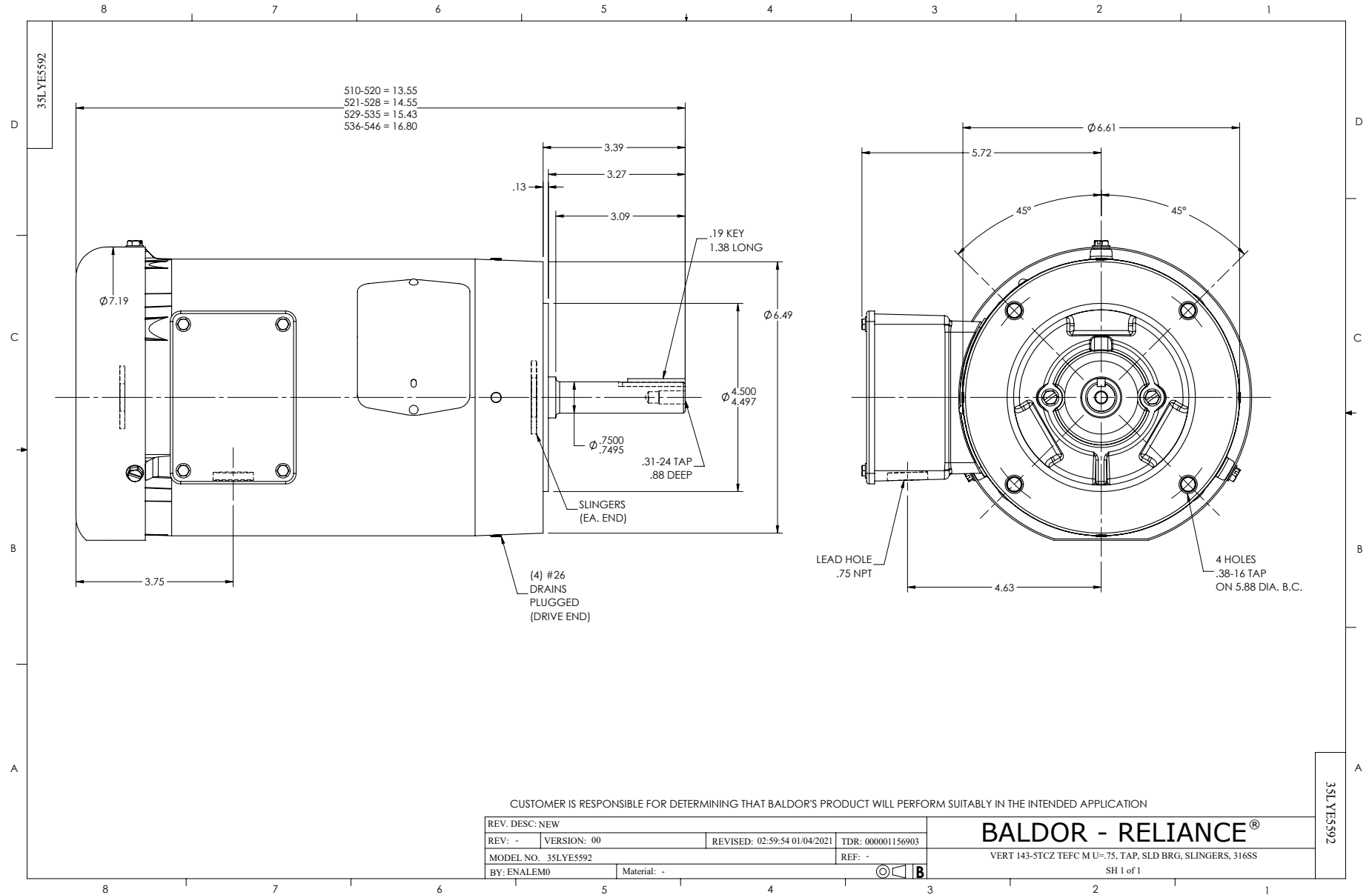
Load Characteristics 460 V, 60 Hz, 2 HP

| % of Rated Load | 25 | 50 | 75 | 100 | 125 | 150 | S.F. |
|-----------------|-------|------|------|------|------|------|------|
| Power Factor | 62 | 79 | 86 | 89 | 90 | 90 | 90 |
| Efficiency | 80.3 | 86.3 | 87.1 | 86.4 | 85.1 | 83.3 | 85.1 |
| Speed | 3562 | 3530 | 3497 | 3462 | 3423 | 3378 | 3423 |
| Line amperes | 0.948 | 1.39 | 1.89 | 2.42 | 3.02 | 3.67 | 3.02 |

Performance Graph at 460V, 60Hz, 2.0HP Typical performance - Not guaranteed values



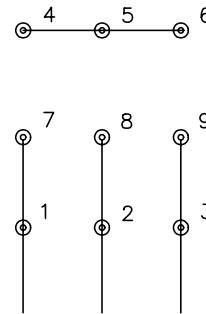
| Parts List | | |
|---------------|------------------------------------------|----------|
| Part Number | Description | Quantity |
| 35WGQ416-C001 | 3,2,3540M,N,CD0005,CS0008,35SL2243,35RC2 | 1.000 EA |
| 35WGQ416-R002 | 3,2,3540M,N,CD0005,TEFC,B,60,2 HP,230/46 | 1.000 EA |
| 35E5592 | TEFC N 143-145TCZ GP M N F1 | 1.000 EA |
| MJ1000A02 | GREASE, MOBIL POLYREX EM - 124047 | 0.050 LB |
| HW1025A10 | #10 BALANCE WASHER (SPL) | 4.000 EA |
| BG6203E03 | 6203 D.SL,C3,POLYREX EM | 1.000 EA |
| BG6205E03 | 6205 D.SL,C3,POLYREX EM | 1.000 EA |
| MG1000G27 | MED CHARCOAL METALLIC GREY 400-0096 | 0.017 GA |
| 35SB0009J00 | AA BAND ASSY, VERT 137137 | 1.000 EA |
| 35SH2G59J01 | SH,TEFC,140,TCZ,MU3005,6205,6203,E2=4.7, | 1.000 EA |
| HA3100A24 | THRUBOLT 10-32 X 10.625 | 4.000 EA |
| MG5024 | varNISH PEDIGREE® 8183 VT POLYESTER | 0.050 GA |
| LC0005E01 | CONN.DIA./WARNING LABEL (LC0005/LB1119N) | 1.000 EA |
| LB1417 | LABEL CARTON 6X4 PERFORATED BLANK ROLLS | 1.000 EA |
| NP1259L | ALUM SUPER-E UL CSA-EEV CC NEMA PREMIUM | 1.000 EA |
| 36PA1001 | PKG GRP, PRINT PK1017A06 | 1.000 EA |
| PK3082 | STYROFOAM CRADLE | 1.000 EA |
| MN416A01 | TAG-INSTAL-MAINT no wire (1200/bx) 3/19 | 1.000 EA |



CD0005

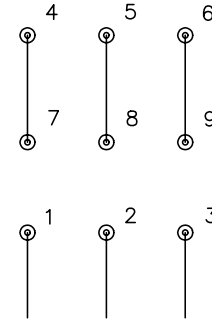


LOW VOLTAGE
(2Y)



LINE

HIGH VOLTAGE
(1Y)



LINE

NOTES:

1. INTERCHANGE ANY TWO LINE LEADS TO REVERSE ROTATION.
2. OPTIONAL THERMOSTATS ARE PROVIDED WHEN SPECIFIED.
3. ACTUAL NUMBER OF INTERNAL PARALLEL CIRCUITS MAY BE A MULTIPLE OF THOSE SHOWN ABOVE.
4. LEAD COLORS ARE OPTIONAL. LEADS MUST ALWAYS BE NUMBERED AS SHOWN.

| | | | |
|-------------------------------------------|---------|-------------------------|--------------|
| REV. DESC: REVISE TO SHOW OPTIONAL COLORS | | | |
| REV. LTR: E | BY: JLP | REVISED: 01/19/99 10:15 | TDR: 0171435 |
| 90000 | | FILE: AAA00005140 | MDL: - |
| | | MTL: - | |

BALDOR ELECTRIC Co.

3PH, DV, 9 LEADS

CD0005

Marketing maintained PDF of MN416:

<http://www.baldor.com/support/Literature/Load.ashx/MN416?ManNumber=MN416>