

BALDOR® • RELIANCE 

Product Information Order

35E5593S358G1

40L 2P TEFC VER 56CZ

Sales Order #:	1208711816-10
Customer Name:	PACER PUMPS

PRELIMINARY DATA

P-62-1254

ABB Motors and Mechanical Inc. DATA TRANSMITTAL AND CERTIFICATION

Sales Order Number 1208711816-10	Customer Number 231154	Customer Order Number 42936-00 (1 of 6)	P.O. Date 12/22/2020
Sold To: PACER PUMPS 41 INDUSTRIAL CIRCLE LANCASTER, PA 17801 United States			
DATA PROVIDED WITH THIS TRANSMITTAL AND CERTIFICATIONS IS: <input checked="" type="checkbox"/> PRELIMINARY, DATA FOR CUSTOMER APPROVAL: The associated documents requested on this order are submitted for approval. Please reply promptly or the order could be delayed. <input type="checkbox"/> FINAL, APPROVED FOR CONSTRUCTION OR INSTALLATION.			

Ship To: PACER PUMPS
 41 INDUSTRIAL CIRCLE
 LANCASTER, PA 17801
 United States

Data Source: ISSUED BY: Mary Crouch 12/23/2020
 Baldor-Reliance Fort Smith

Application Centrifugal Pump	Quantity 1,000	Frame 56CZ	Motor / Gen. D.S.:
Elec Type 2 HP	HP 2 HP	Enclosure TEFC	Electrical Design
RPM 3600	Phs 1	Time CONT	Leads Location
Rotation Bi-directional	DC Field Excitation	Winding Type F-1	Mounting Base
Insulation F	Mtg Drive F-1	Bearing Ball / Ball 1.00	S F 1.00
Type	Torque	Enclosure	Phs
			Hz
			Volts
			Motor / Gen. C.D.:
			Conduit Box:
			Motor / Gen. D.S.:
			Line Voltage
			PH/Hz/V
			FL Amps

Additional Specifications:

BASIC CONFIGURATION
 Partial Motor Design No
 Frame Band 35
 Customer Application Centrifugal Pump
 Letter Type L - Cap Start / Induction Run
 Temp Code None
ELECTRICAL
 Ambient Minimum -25C
 208 Volt Nameplate Rating Usable at 208 Volt
 Starting Method Standard Start
MOUNTING
 Mounting Flange - DE C-Face
 Mounting Position F-1
 Frame Mounting Footless
 Drive Method Direct
 Mounting Orientation Horizontal
 Shaft - Special Material 316 Stainless
 Shaft - Drill Hole End Drive End



ABB Motors and Mechanical Inc. DATA TRANSMITTAL AND CERTIFICATION

Sales Order Number 1208711816-10	Customer Number 231154	Customer Order Number 42936-00 (1 of 6)
		P.O. Date 12/22/2020

Drill & Tap hole DE Shaft 5/16-24 X.88 DEEP
 Shaft - Special Extension Yes
 Shaft Extension Z
 Shaft Drawing OL119833
 Shaft Dim U 0.750000
 Shaft Dim V 3.39000
 Dim S Width of keyseat 3/16
 Dim R Depth of keyseat .56

BEARINGS

Bearing Enhancement DE Sealed
 Bearing Enhancement ODE Sealed
 Locked Bearing Drive End
 Lube Type Grease

Grease Type
Exxon Polyrex EM

MECHANICAL

Balance Standard (0.15 in/sec)
 Rotation Facing ODE Bi-directional
 Stainless Steel Hardware Yes
 Stainless Steel Hardware Type 300 Series Stainless
 Fan Material Standard
 Paint System Standard (C2)
 Paint Color Specification Standard Lacquer
 Paint Color Charcoal Gray Metallic
 Baldor-Reliance Paint Spec No 004824-007BXA / MG1000G27
 Auto Drain Type Hole(s) in End Shield(s)

MONITORING DEVICES

Thermal Protection None

CONDUIT BOX

Main Conduit Box Required
 Main Conduit Box Location Standard (side)
 Main Conduit Box Material Aluminum
 Main Conduit Box Size Standard Oversize
 Cbox Entry Hole No
 Lead Entry NPT Yes
 Lead Entry NPT Qty 1
 Lead Entry NPT Size (3/4 - 14 NPT)
 Lead Entry Location Toward Feet - Down
 Conduit Box Lead Entry Plugged Yes
 Ground Servit Post No
 Mechanical Start Switch Yes

NAMEPLATE / LABELS

Nameplate Language English
 Customer Part Number Marks Yes
 Customer Part Number P-62-1258



ABB Motors and Mechanical Inc. DATA TRANSMITTAL AND CERTIFICATION

Sales Order Number	Customer Number	Customer Order Number	P.O. Date
1208711816-10	231154	42936-00 (1 of 6)	12/22/2020

Additional heater Markings No
 Label "Heater Energized" No
 Label CSA Yes
 Label UR Yes

PACKAGING
 Packaging Type Standard Packing

DOCUMENTATION

Document Unit of Measure US
 Certified Dimension Sheet Yes
 Performance Data/Curves Yes
 Standard Connection Diagram Yes
 Motor Instruction Manual Yes
 Renewal Parts List Yes
 Nameplate Data Yes
 Documentation Format PDF

SPECIAL ITEMS

Custom Requirements Yes
 Custom Requirements **FOUR HOLES WITH PLUGS IN DRIVE END PLATE.**

COMMERCIAL COMMENTS

Estimated Lead Time
 Estimated Lead Time is based on plant loading at the time of quotation and is intended to be used as a guide for our customers. This estimation includes the Engineering and Manufacturing time only. It DOES NOT include shipping time. Please contact your ABB Motors and Mechanical Inc. representative if specific delivery requirements are needed.



Notes:

Class null
Division null

Nameplate NP1256L										
CAT.NO.										
SPEC.	35E5593S358G1									
HP	2									
VOLTS	115/230									
AMP	22/11									
RPM	3450									
FRAME	56CZ				HZ	60			PH	1
SER.F.	1.00		CODE	K	DES	L		CLASS	F	
NEMA-NOM-EFF	76		PF	84						
RATING	40C AMB-CONT									
CC	USABLE AT 208V 11.5									
DE	6205				ODE	6203				
ENCL	TEFC		SN							
	P-62-1258									

AC Induction Motor Performance Data

Record # 86019

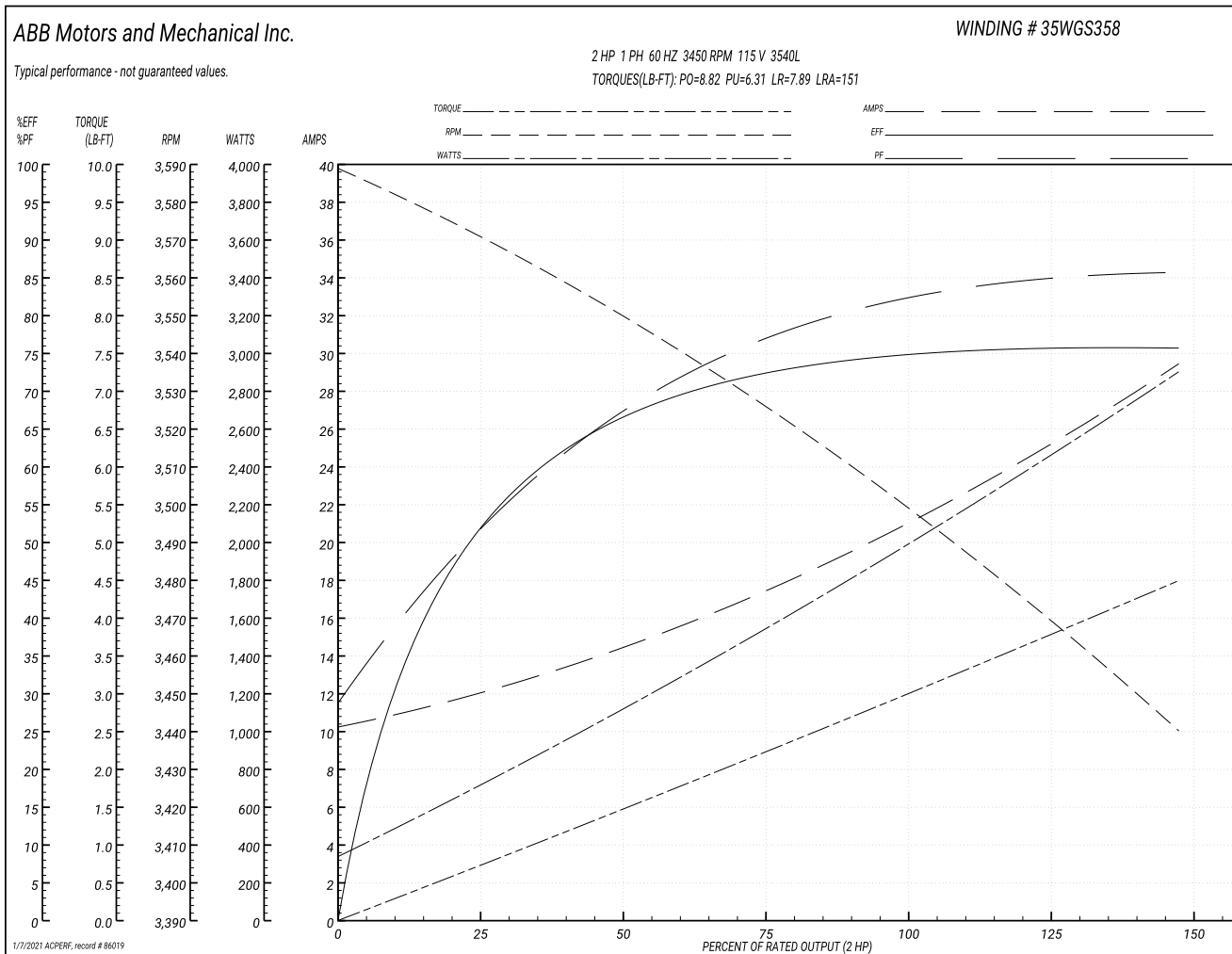
Typical performance - not guaranteed values

Winding: 35WGS358-R006		Type: 3540L	Enclosure: TEFC
Nameplate Data		115 V, 60 Hz: Low Voltage Connection	
Rated Output (HP)	2	Full Load Torque	3 LB-FT
Volts	115/230	Start Configuration	direct on line
Full Load Amps	22/11	Breakdown Torque	8.82 LB-FT
R.P.M.	3450	Pull-up Torque	6.31 LB-FT
Hz	60 Phase	Locked-rotor Torque	7.89 LB-FT
NEMA Design Code	L KVA Code	Starting Current	151 A
Service Factor (S.F.)	1	No-load Current	10.5 A
NEMA Nom. Eff.	76 Power Factor	Line-line Res. @ 25°C	0.198 Ω A Ph 1.35 Ω B Ph
Rating - Duty	40C AMB-CONT	Temp. Rise @ Rated Load	73°C
		Locked-rotor Power Factor	75.1
		Rotor inertia	0.111 lb-ft ²

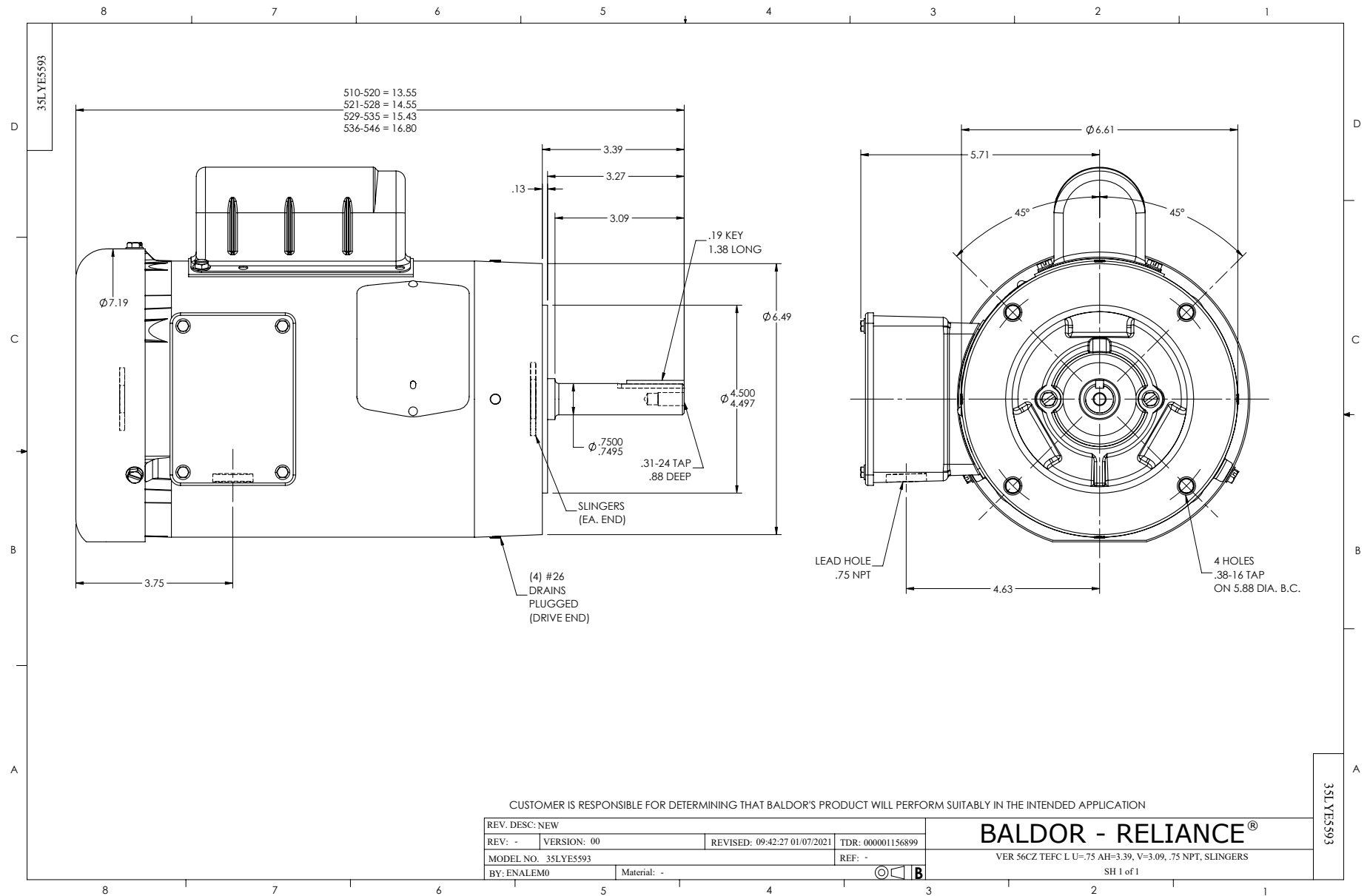
Load Characteristics 115 V, 60 Hz, 2 HP

% of Rated Load	25	50	75	100	125	150
Power Factor	54	70	79	83	86	86
Efficiency	51.9	66.6	72.5	75.2	75.8	75.6
Speed	3569	3549	3525	3500	3472	3439
Line amperes	11.9	14.2	17.2	22	24.8	29.3

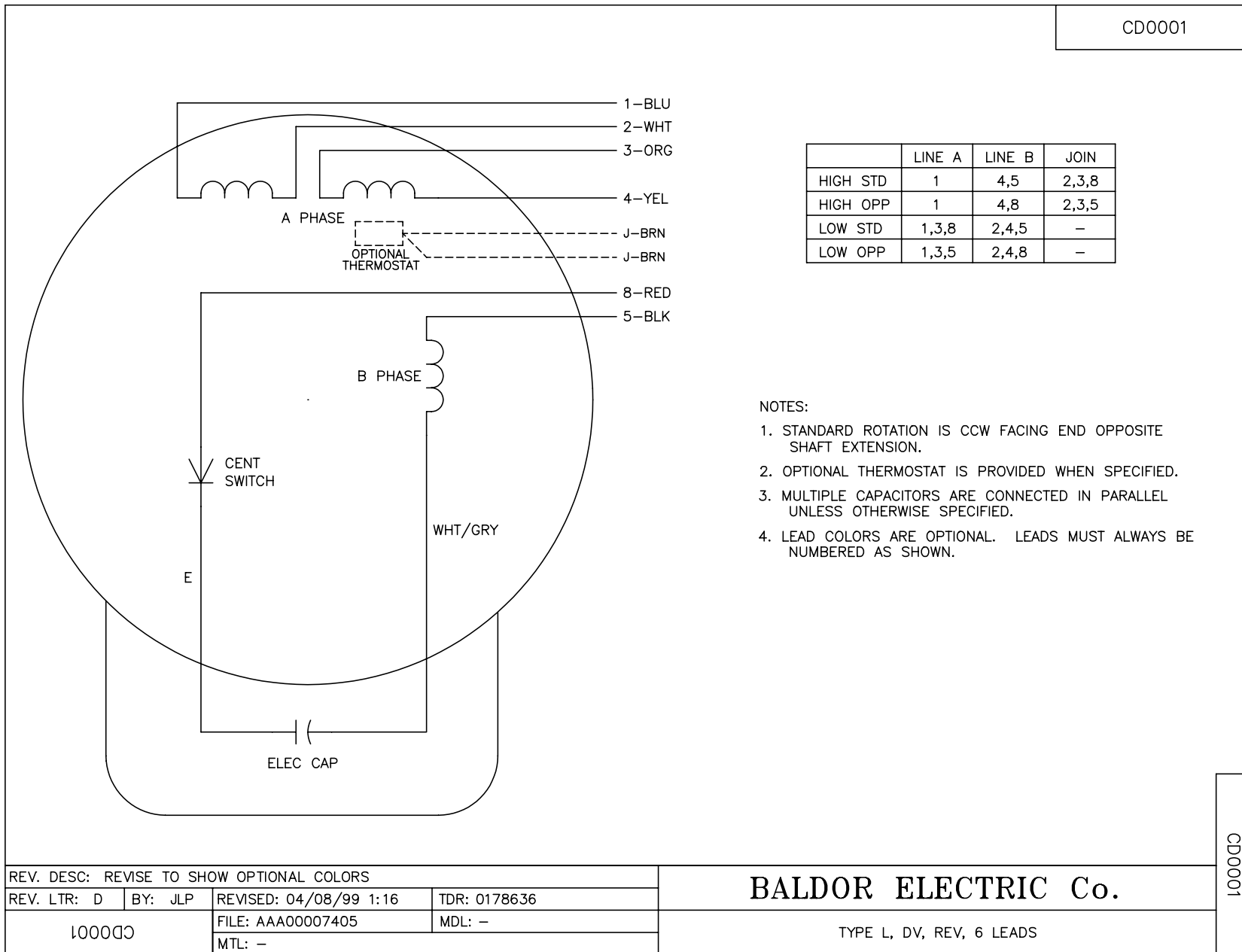
Performance Graph at 115V, 60Hz, 2.0HP Typical performance - Not guaranteed values



Parts List		
Part Number	Description	Quantity
35WGS358-C001	1,2,3540L,N,CD0001,CS0007,35SL2240,35RC2	1.000 EA
35WGS358-R006	1,2,3540L,N,CD0001,TEFC,L,60,2 HP,115/23	1.000 EA
35E5593	TEFC N 56CZ GP L N F1	1.000 EA
WD1000A15	3-520132-2 AMP FLAG (4M/RL) 16-14AWG	2.000 EA
MJ1000A02	GREASE, MOBIL POLYREX EM - 124047	0.050 LB
HW1025A10	#10 BALANCE WASHER (SPL)	4.000 EA
35FN4000A02SP	INFN, STEEL, 5.63 OD, 1.175 ID	1.000 EA
BG6203E03	6203 D.SL,C3,POLYREX EM	1.000 EA
BG6205E03	6205 D.SL,C3,POLYREX EM	1.000 EA
35FN3002A05SP	EXFN, PLASTIC, 6.376 OD, .638 ID	1.000 EA
MG1000G27	MED CHARCOAL METALLIC GREY 400-0096	0.017 GA
35SB0011J00	AA BAND ASSY, VERT 874874	1.000 EA
SP5051A24	MODEL 35 TORQ STATIONARY SWITCH FOR "L"	1.000 EA
35SH6790J01	SH,TEFC,56,,MU3005,6205,6203,E2=4.7,B=10	1.000 EA
RS9001A02	TORQ 200 SERIES ROTARY SW2P,60HZ,I-BORE,	1.000 EA
HA3100A24	THRUBOLT 10-32 X 10.625	4.000 EA
MG5024	varNISH PEDIGREE® 8183 VT POLYESTER	0.050 GA
LB1417	LABEL CARTON 6X4 PERFORATED BLANK ROLLS	1.000 EA
LC0001A01	CONN LABEL / WARNING LABEL (LC0001 / LB1	1.000 EA
NP1256L	ALUM UL CSA CC INDUSTRIAL MOTOR A60	1.000 EA
36PA1001	PKG GRP, PRINT PK1017A06	1.000 EA
PK3082	STYROFOAM CRADLE	1.000 EA
MN416A01	TAG-INSTAL-MAINT no wire (1200/bx) 3/19	1.000 EA



CD0001



	LINE A	LINE B	JOIN
HIGH STD	1	4,5	2,3,8
HIGH OPP	1	4,8	2,3,5
LOW STD	1,3,8	2,4,5	-
LOW OPP	1,3,5	2,4,8	-

NOTES:

1. STANDARD ROTATION IS CCW FACING END OPPOSITE SHAFT EXTENSION.
2. OPTIONAL THERMOSTAT IS PROVIDED WHEN SPECIFIED.
3. MULTIPLE CAPACITORS ARE CONNECTED IN PARALLEL UNLESS OTHERWISE SPECIFIED.
4. LEAD COLORS ARE OPTIONAL. LEADS MUST ALWAYS BE NUMBERED AS SHOWN.

REV. DESC: REVISE TO SHOW OPTIONAL COLORS			
REV. LTR: D	BY: JLP	REVISED: 04/08/99 1:16	TDR: 0178636
100000		FILE: AAA00007405	MDL: -
		MTL: -	

BALDOR ELECTRIC Co.

TYPE L, DV, REV, 6 LEADS

CD0001

Marketing maintained PDF of MN416:

<http://www.baldor.com/support/Literature/Load.ashx/MN416?ManNumber=MN416>