

# 2" AND 3" 'S' SERIES SELF-PRIMING COMMERCIAL DUTY PUMP

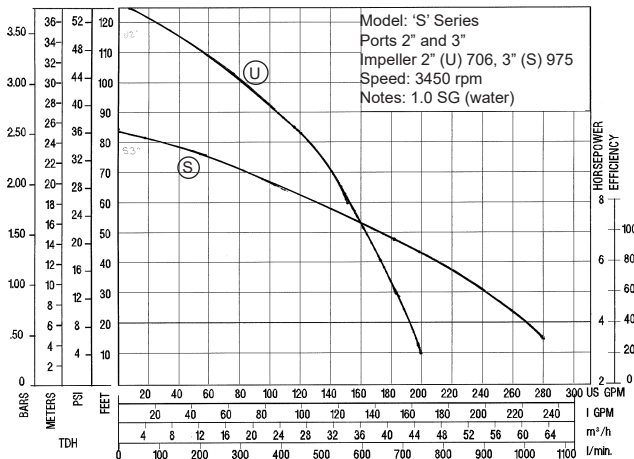
BULLETIN  
PP-637C  
OCT. 2021



## Pacer Pump Features:

- Corrosion resistant glass reinforced polyester.
- EPDM elastomers are standard, Buna-N and Viton® are optional.
- Maximum flow to 280 U.S. GPM.
- Maximum TDH to 120 feet.
- Suction lift to 25 feet.
- 2 or 3" NPT ports, BSP optional.
- Double flush volute with built-in check valve.
- Lightweight and portable with molded carry handle and available with optional roll cage.
- Shaft seal is stainless steel with carbon and ceramic faces, EPDM fitted.

## PERFORMANCE CURVE



## Vanguard Engine Features:

- Briggs & Stratton commercial duty 6.5 hp engine.
- 3 year commercial warranty on engine through manufacturer.
- Compact overhead valve design.
- Dual ball bearings.
- Cast iron cylinder sleeve.
- High capacity air cleaner.
- Metal fuel tank with 4 liter capacity.
- Run Sense low oil system.
- Mechanical governor.
- Fuel shut-off valve with sediment bowl.
- Simultaneous fuel/ignition shut-off protects the engine from oil/fuel dilution during transport.
- Electric start option available.



## PUMP SPECIFICATIONS

| CURVE | MODEL       | PORT SIZE | MAX. FLOW | MAX. TDH | ENGINE                     | WEIGHT  |
|-------|-------------|-----------|-----------|----------|----------------------------|---------|
| U     | SE2UL E6VCP | 2"        | 200 GPM   | 120 ft.  | Briggs & Stratton Vanguard | 55 lbs  |
| S     | SE3SL E6VCP | 3"        | 280 GPM   | 83 ft.   | Briggs & Stratton Vanguard | 55 lbs. |

F.O.B. Lancaster, Pennsylvania

Registered trademark: Viton - DuPont Dow Elastomers

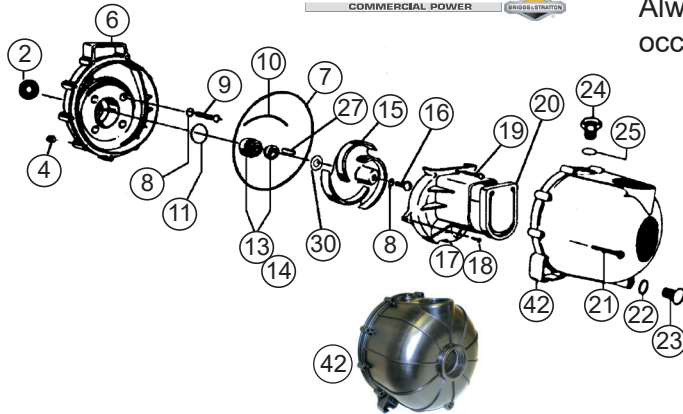


41 Industrial Circle  
Lancaster, PA 17601-5927 U.S.A.  
Email: sales@pacerpumps.com  
www.pacerpumps.com

717-925-8240  
800-233-3861  
FAX: 717-925-8242



# 2" AND 3" 'S' SERIES SELF-PRIMING COMMERCIAL DUTY PUMP



### CARING FOR PACER PUMPS:

When handling agricultural fertilizer and chemicals, flush pump with fresh clean water immediately after use. Before storing pump, **flush** with fresh clean water and **drain** completely.

EPDM rubber components **are not compatible** with petroleum products. **Do not** use petroleum products when preparing pump for storage.

Extra engine protection with special shaft gasket helps keep liquid from entering engine in the event of seal failure. Always replace a dripping seal before additional damage occurs.

- Housing, volute and impeller: glass-reinforced polyester
- Rubber parts: EPDM
- Shaft seal: Stainless steel with carbon and ceramic faces, EPDM fitted.
- Hardware: Internal and external stainless steel fasteners
- Working pressure: To 52 PSI
- Flow: To 280 GPM

### PARTS LIST FOR MODEL NUMBERS SE2UL E6VCP AND SE3SL E6VCP

| REF. NO.     | DESCRIPTION               | QTY./PUMP   | SE2UL E6VCP         | SE3SL E6VCP         |
|--------------|---------------------------|-------------|---------------------|---------------------|
| 2            | Engine protection gasket  | 1           | P-58-0935 72        | P-58-0935 72        |
| 4            | Body nut (as required)    | 10          | P-58-0721 10        | P-58-0721 10        |
| 6            | Bracket                   | 1           | P-58-0703 30B       | P-58-0703 30B       |
| 7            | "O"-ring, body            | 1           | P-58-0719 72        | P-58-0719 72        |
| 8            | "O"-ring, screw           | 5           | P-58-0717 72        | P-58-0717 72        |
| 9            | Screw, Bracket            | 4           | P-58-0715 10        | P-58-0715 10        |
| 10           | "O"-ring segment          | 1           | P-58-0754 72        | P-58-0754 72        |
| 11, 13, & 14 | Shaft seal & "O"-ring     | 1           | P-58-0714 12        | P-58-0714 12        |
| 15           | Impeller                  | 1           | P-58-0706 30        | P-58-0975 30        |
| 16           | Screw, impeller           | 1           | P-58-0716 10        | P-58-0716 10        |
| 17           | Volute                    | 1           | P-58-0702 30        | P-58-0977 30        |
| 18           | Screw, side volute        | As required | P-58-0725 10        | P-58-0725 10        |
| 19           | Screw, top volute         | As required | P-58-0771 10        | P-58-0997 10        |
| 20           | Check valve               | 1           | P-58-0705 72        | P-58-0705 72        |
| 21           | Screw, body 2-7/16" (old) | 10          | P-58-0720 10        | P-58-0720 10        |
|              | Screw, body 2" (new)      | 10          | P-58-1206 10        | P-58-1206 10        |
| 22           | "O"-ring, drain plug      | 1           | P-58-1009 72        | P-58-1009 72        |
| 23           | Drain plug                | 1           | P-58-0723 30        | P-58-0723 30        |
| 24           | Filler plug               | 1           | P-58-0722 30B       | P-58-0722 30B       |
| 25           | "O"-ring, filler plug     | 1           | P-58-0765 72        | P-58-0765 72        |
| 27           | Key                       | 1           | P-58-0718           | P-58-0718           |
| 30           | Shim                      | As required | P-58-0778 11 (.006) | P-58-0778 11 (.006) |
|              |                           | As required | P-58-0778 12 (.015) | P-58-0778 12 (.015) |
|              |                           | As required | P-58-0778 13 (.030) | P-58-0778 13 (.030) |
| 42           | Body, 2" or 3" NPT        | 1           | P-58-1002 30B       | P-58-0755 30B       |