



# DYNAFLEX

## 230<sup>®</sup> PREMIUM ELASTOMERIC INTERIOR / EXTERIOR SEALANT



DAP<sup>®</sup> DYNAFLEX 230<sup>®</sup> delivers a “**SILICONE TOUGH**” latex formulation for outstanding exterior performance against the elements.



### SILICONE TOUGH, LATEX EASY

- **SUPERIOR FLEXIBILITY & CRACKPROOF**  
Flexible enough to endure expansion and contraction without cracking or losing its seal. Meets ASTM C920, Class 25.
- **SEALS JOINTS UP TO 2" WIDE**  
Able to seal wider gaps with 50% total joint movement.
- **IDEAL FOR NATURAL & SYNTHETIC MATERIALS**  
High performance formula adheres to a wide range of building materials, such as wood, MDF, PVC, polystyrene, and composite trimboard
- **EASY TO APPLY & CLEAN-UP**  
Smooth application and tooling makes it easy to strike a perfect bead. Never sticky or “stringy” like silicone. Cleans up with soap and water. Low in odor.
- **2 HOUR PAINT READY**  
Won't crack paint. No primer required.
- **EXTERIOR/INTERIOR USE**  
Durable and versatile formula can be used for both demanding exterior and interior projects
- **LIFETIME GUARANTEE**



## Window, Door & Siding



# DYNAFLEX

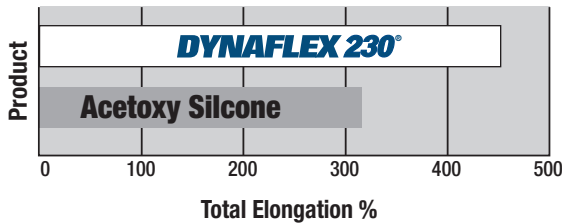
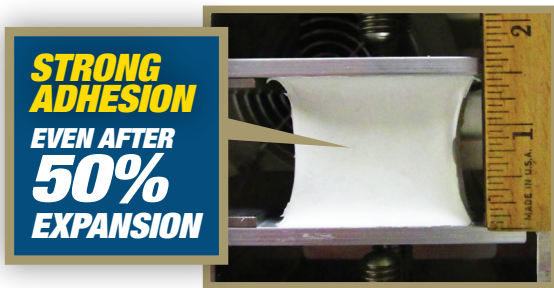
**230**® PREMIUM ELASTOMERIC  
INTERIOR / EXTERIOR  
SEALANT



## OUTPERFORMS MOST ACETOXY SILICONES

### MORE FLEXIBLE

Stays permanently flexible with strong adhesion. Stands up to expansion and contraction of building materials due to weather and temperature changes.



### PAINTABLE

Provides outstanding bonding characteristics with both latex and oil based paints.

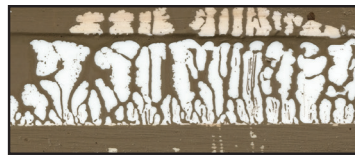
#### DYNAFLEX 230®



Painted after 2 hours

VS.

#### Acetoxy Silicone



Not Paintable

### STRONGER MULTI-MATERIAL ADHESION

Substrate	DYNAFLEX 230®	Acetoxy Silicone
Painted Wood	●	●
Vinyl Siding	●	●
PVC	●	●
Aluminum	●	●
Glass	●	●
Mortar	●	●
Marble	●	●

Test Method: C794 Dry & Subjective Adhesion Pulls

### COLOR MATCHED TO TOP SIDING & TRIM COLORS



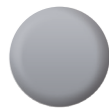
White



Clear



Almond



Light Gray



Clay



Brown



Cedar Tan



Dark Bronze



Black

#### Product Specifications

Color	Size	Case Pack	Case Code	Product Code	GTIN 14	Case Weight (lb)	Case Dimensions (LxWxH)	Case Volume (cu ft)	Cases Per Pallet
White	5.5 fl oz	15	18886	0 70798 18285 1	300 70798 18886 1	8.50	7.75" x 7.37" x 10"	0.33	120
Clear	5.5 fl oz	15	18860	0 70798 18357 5	300 70798 18860 1	6.30	7.75" x 7.37" x 10"	0.33	120
White	10.1 fl oz	12	18275	0 70798 18300 1	000 70798 18275 2	13.00	8" x 6" x 12"	0.33	108
Clear	10.1 fl oz	12	18304	0 70798 18305 6	000 70798 18304 9	10.00	8" x 6" x 12"	0.33	108
Almond	10.1 fl oz	12	18288	0 70798 18306 3	000 70798 18288 2	13.00	8" x 6" x 12"	0.33	108
Light Gray	10.1 fl oz	12	18286	0 70798 18301 8	000 70798 18286 8	13.00	8" x 6" x 12"	0.33	108
Clay	10.1 fl oz	12	18416	0 70798 18416 9	100 70798 18416 6	13.00	8" x 6" x 12"	0.33	108
Brown	10.1 fl oz	12	18418	0 70798 18302 5	000 70798 18418 3	13.00	8" x 6" x 12"	0.33	108
Cedar Tan	10.1 fl oz	12	18412	0 70798 18412 1	100 70798 18412 8	13.00	8" x 6" x 12"	0.33	108
Dark Bronze	10.1 fl oz	12	18420	0 70798 18303 2	000 70798 18420 6	13.00	8" x 6" x 12"	0.33	108
Black	10.1 fl oz	12	18280	0 70798 18280 6	100 70798 18280 3	13.00	8" x 6" x 12"	0.33	108