

INSTRUCTIONS

⚠ WARNING: READ AND UNDERSTAND ALL INSTRUCTIONS.

Failure to follow all instructions listed below may result in electric shock, fire and/or serious personal injury.

⚠ WARNING: ELECTRIC PRODUCT. Keep away from children. Not recommended for children under 3 years of age. As with all electrical products, precautions should be observed during handling and use to reduce the risk of electric shock. If the supply cord is damaged, it must be replaced by the manufacturer, its service agent or similarly qualified persons in order to avoid a hazard. To avoid the risk of electrical shock, always make sure the product is unplugged from the electrical outlet before assembling, disassembling, or relocating.

⚠ WARNING: This product is to be assembled by adults only.

IMPORTANT SAFETY INSTRUCTIONS WHEN USING ELECTRICAL PRODUCTS, BASIC PRECAUTIONS SHOULD ALWAYS BE FOLLOWED INCLUDING THE FOLLOWING:

READ AND FOLLOW ALL SAFETY INSTRUCTIONS.

1. This is an electrical product - not a toy! To avoid risk of fire, burns, personal injury, and electric shock, it should not be played with or placed where small children can reach it.
2. Do not use seasonal products outdoors unless marked suitable for indoor and outdoor use. When products are used in outdoor applications, connect the product to a Ground Fault Circuit Interrupting (GFCI) outlet. If one is not provided, contact a qualified electrician for proper installation.
3. This seasonal use product is not intended for permanent installation or use.
4. Do not mount or place near gas or electric heaters, fireplaces, candles, or other similar sources of heat.
5. Do not secure product wiring with staples or nails or place on sharp hooks or nails.
6. Do not let lamps rest on the supply cord or on any wire.
7. Unplug the product when leaving the house, when retiring for the night, or if left unattended.
8. Do not use this product for other than its intended purpose.
9. Do not hang ornaments or other objects from cord, wire, or light string.
10. Do not close doors or windows on the product, or extension cords, as this may damage the wire insulation.
11. Do not cover the product with a cloth, paper, or any material not part of the product when in use.
12. Do not place the product against carpeting, furniture, or any other fabric when in use.
13. Read and follow all instructions that are on the product or provided with the product.

For outdoor use adapter:

IMPORTANT SAFETY INSTRUCTIONS

When using electrical products, basic precautions should always be practiced including the following:

1. READ AND FOLLOW ALL SAFETY INSTRUCTIONS.

2. Read and follow all instructions that are on the product or provided with the product.
 3. Do not use an extension cord.
 4. Reference the National Electrical Code, ANSI/NFPA 70, specifically for the installation of wiring and clearances from power and lighting conductors.
 5. Installation work and electrical wiring must be done by qualified person(s) in accordance with all applicable codes and standards, including fire-rated construction.
 6. Do not install or use within 10 feet of a pool.
 7. Do not use in a bathroom.
 8. **WARNING:** Risk of Electric Shock. When used outdoors, install only to a covered Class A GFCI protected receptacle that is weatherproof with the power unit connected to the receptacle. If one is not provided, contact a qualified electrician for proper installation. Ensure that the power unit and cord do not interfere with completely closing the receptacle cover.
 9. **WARNING:** Risk of Fire. Installation involves special wiring methods to run wiring through a building structure. Consult a qualified electrician.
 11. **WARNING:** Risk of Electric Shock. Mount the unit at a height greater than 1 foot from the ground surface.
- SAVE THESE INSTRUCTIONS** - This manual contains important safety and operating instructions for power units.

SAVE THESE INSTRUCTIONS

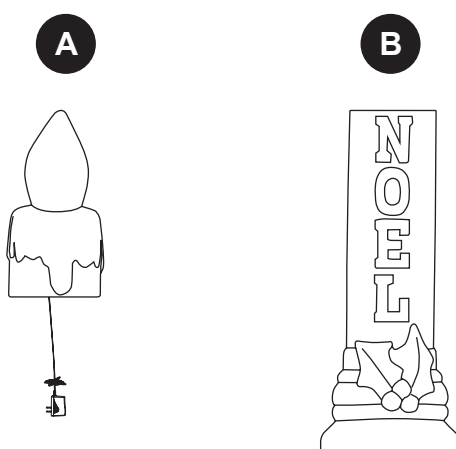
USE AND CARE INSTRUCTIONS

1. Before using and reusing, inspect the product carefully. Discard any products that have cut, damaged or frayed wire insulation cords, cracks in the lampholders or enclosures, loose connections, or exposed copper wire.
2. When storing the product, carefully remove the product from wherever it is placed, to avoid any undue strain or stress on the product conductors, connections and wires.
3. When not in use, store carefully in a cool, dry location protected from sunlight.

Congratulations! You're the proud owner of your very own Lighted Candle from Gemmy! Below, we hope you'll find the answers to many questions, and how to get maximum enjoyment from it for years to come!

Please read over the directions carefully before installing and operating this item. Some assembly is required.

CONTENTS



A Candle Flame Top w/ Adapter
B Candle Base

1 piece
1 piece

Input: 100-240V
Output: 4.5V \approx 0.67A

PREPARATION

Estimated assembly time: 5-10 minutes.

Before beginning assembly, remove all parts from carton. Compare parts list and diagram above. If any part is missing or damaged, do not attempt to assemble or use the product.

ASSEMBLY INSTRUCTIONS

1. Carefully remove all parts from inside of candle base.
2. Place Candle base with Noel (B) facing towards you and set on stable ground.
3. Set Flame top with adapter (A) on top of candle base (B) and run adapter wire outside the candle. See illustration 1.

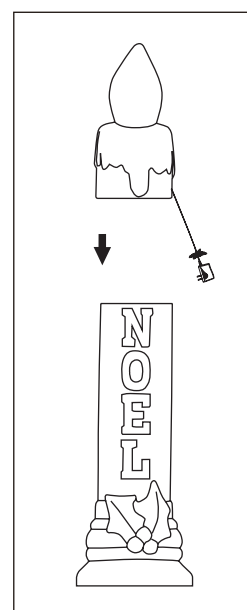


Illustration 1

4. Plug into outlet. Unplug when not in use. See illustration 2.

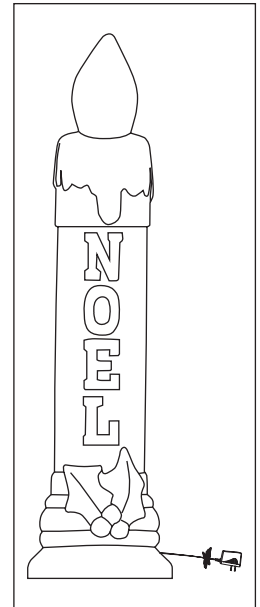


Illustration 2

STORAGE

Do not discard box as it should be used for storage. Return all parts to the original packaging. Store in a cool, dry location.

FREQUENTLY ASKED QUESTIONS (FAQ's)

I switched Figure on and it does not work. What can I do?

- First, ensure that the unit is plugged in. Next, ensure the toggle switch is in the desired position. Third, ensure the outlet your unit is plugged into has power. Last, disconnect and reconnect head and check all adapter connections.

WARNING

This device complies with Part 15 of the FCC Rules. Operation is subject to the following two conditions: (1) this device may not cause harmful interference, and (2) this device must accept any interference received, including interference that may cause undesired operation.

CAUTION: Changes or modifications not expressly approved by the party responsible for compliance could void the user's authority to operate the equipment.

NOTE: This equipment has been tested and found to comply with the limits for a Class B digital device, pursuant

to Part 15 of the FCC Rules. These limits are designed to provide reasonable protection against harmful interference in a residential installation. This equipment generates, uses, and can radiate radio frequency energy and, if not installed and used in accordance with the instructions, may cause harmful interference to radio communications. However, there is no guarantee that interference will not occur in a particular installation. If this equipment does cause harmful interference to radio or television reception, which can be determined by turning the equipment off and on, the user is encouraged to try to correct the interference by one or more of the following measures:

- Reorient or relocate the receiving antenna.
- Increase the distance between the equipment and receiver.
- Connect the equipment into an outlet on a circuit different from that to which the receiver is connected.
- Consult the dealer or an experienced radio/TV technician for help.

THESE INSTRUCTIONS ARE FOR THESE ITEMS

113813



Visit WWW.GEMMY.COM for more information.
©2023 GEMMY INDUSTRIES CORP.
117 WRANGLER DRIVE, SUITE 100
COPPELL, TX 75019 U.S.A.
1(877)250-9032
MADE IN CHINA / PRINTED IN CHINA