

# Wall Hugger Storage Shed

Instruction Manual for Sizes:  
4' x 6' | 6' x 6'

## *contents*

---



- 1 - floor
- 1 - back wall
- 2 - side walls
- 1 - door wall
- 1 - roof section
- 1 - touch up paint can
- 1 - #2 sq bit
- Extra screws

*happy with our products?*

Please help us spread the  
word by leaving a review at:

[www.SHEDorize.com](http://www.SHEDorize.com)



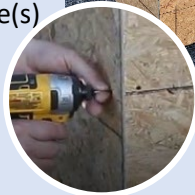
**CONFIRM THAT ALL PARTS ARE PRESENT BEFORE BEGINNING ASSEMBLY.**

For assembly, you will only need a screw gun and level. Depending on your height, a stepladder may be useful.

**Step 1: Open Crate Up.**

Take the screws out of the plywood and cut the plastic bands holding the crate frame.

While completing the next steps, only cut the plastic bands for the piece(s) in the step, so that the other pieces stay in place until you need them.

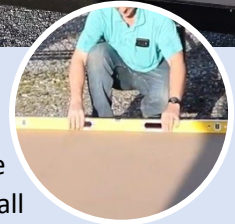


**Step 2: Set Floor Piece.**

Level the ground where the shed will be.

If it is not level ground, place some blocks on the ground to make it level.

Place the floor piece on the desired spot. The metal kickplate marks the door side. Check that all sides are level. Adjust the ground/blocks as needed.



**Step 3: Place Square Wall without Door.**

Make sure the studs are upright. The edge where the siding is even with the framing goes on top.

Place the wall on this mark.

Push the wall in against the floor the whole way across. Fasten the pre-started screws into the floor.



**Note:** If it is a windy day, we recommend that someone holds the wall after the screws are fastened. If it is a still day, you do not need to hold the wall.

**Step 4: Place Wall with Sloped Top.**

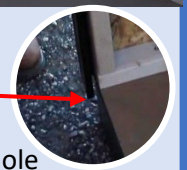
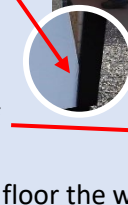
The high side of this wall must be lined up with the wall that was just placed.

The corner trim goes over the siding of the first wall. The corners should meet inside.

The edge of the wall should be flush with the framing of the floor.

Push the wall in against the floor the whole way across. Fasten the pre-started screws in the wall into the floor.

Make sure the corners meet at the top of the walls outside. Fasten the pre-started screws in the stud of the first wall into this wall.



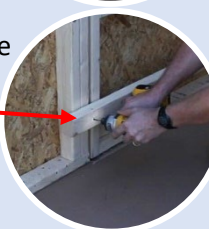
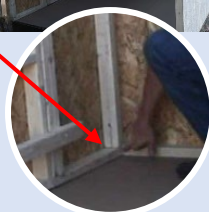
**Step 5: Place Wall with Door.**

Slide the siding in behind the trim on the corner of the previous wall. The wall corners should meet.

Push the wall in against the floor the whole way across. Fasten the pre-started screws into the floor.

Make sure the two walls are tight against each other. Fasten the pre-started screws into the wall.

Once all the screws are fastened, take the brace off on the inside of the door by removing the screws.

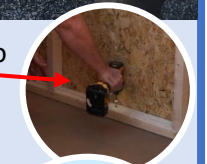
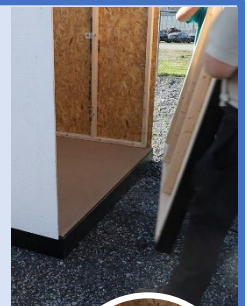


**Step 6: Place the Final Wall.**

Make sure the high side of this wall is lined up with the high side of the other wall. Place the trim over the siding and slide the wall in against the other two walls and the floor.

Inside the shed, make sure the wall is tight in against the floor. Fasten all pre-started screws into the floor.

Make sure the wall is tight against the back wall, and fasten the pre-started screws along the stud. Repeat for the side against the front wall.



### Step 7: Install the Roof.

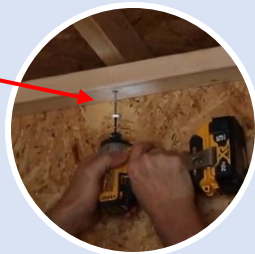
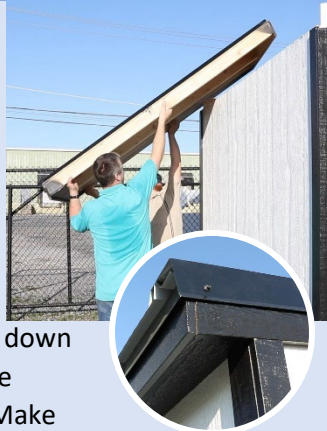
Note: The overhang on the roof piece will always be on the low wall.

From the back of the shed, place the roof on top of the shed, making sure to place it higher up on the high end and slide it down into place, that way the face board overlaps the siding. Make sure that the sides of the roof are snug and locked in place and that each rafter of the roof is down against the top of the front and back walls.

Additionally, walk around the outside of the shed, verifying that the trim pieces and face board overlap properly.

Then, go back inside the shed and fasten in the short black screws on each side. If they fell out during shipping, get more from the bag that has extra. Be sure to do this on each side.

Next, fasten screws up into all rafters, on both the front and back ends of the shed.

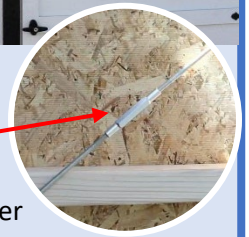
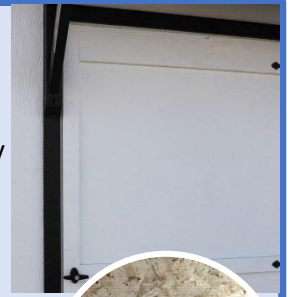


### Step 8: Door.

If one side of the door is closer to the trim than the other, lift one side of the shed accordingly and block it up, and that will correct the reveal.

If, either after assembly or even years down the road, the door isn't closing fully against the frame, open the door up to see the metal wire brace on the door. Using a wrench, adjust the brace to be either tighter or looser, depending on what is needed, and that will allow the door to close properly again.

If the latch is not turning properly, go inside the shed. There is a screw on the latch. Adjust it by using an Allen wrench to turn that screw.



### Step 9: Touch up the Paint.

Lastly, touch up any blemishes on the shed with the touchup paint that is included in the order.

