

Cordless Tool Shelf Instruction Manual

contents:

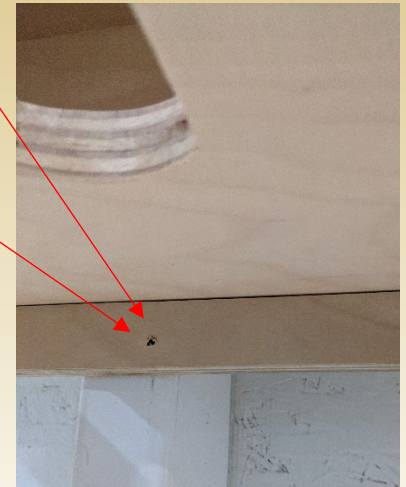
- 6 - #10 2.5" white screws, #2 sq dr

Setting Up Your Cordless Tool Shelf

CONFIRM THAT ALL PARTS ARE PRESENT BEFORE BEGINNING ASSEMBLY.

1. Find the studs. You can put this shelf at whatever height you want.
2. Attach the tool shelf to the wall according to the steps below, depending on the spacing of the studs.
 - a. If the studs are 24" on center, put screws in the holes that are 24" on center.
 - b. If the studs are 16" on center, put screws in the holes that are 16" on center.

Not to exceed 75 pounds.



happy with our products?

Please help us spread the word by leaving a review at: www.SHEDorize.com



SHEDorize

SHEDorize.com

(866) 548-1625

info@amishland.com