



4 Hook Rake/Shovel/Cord Rack (48")

Instruction Manual

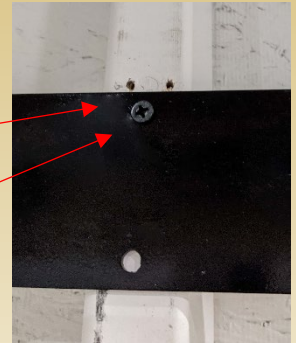
contents:

- 1 - rack
- 8 - #10 2" black screws, #2 sq dr

Setting Up Your 4 Hook Rake/Shovel/Cord Rack (48")

CONFIRM THAT ALL PARTS ARE PRESENT BEFORE BEGINNING ASSEMBLY.

1. Find the studs. You can put these hooks at whatever height you want.
2. Determine how far apart the studs are.
 - a. If the studs are 24" on center, put screws in the holes that are 24" on center and fasten, ensuring that the screws hit the studs.
 - b. If the studs are 16" on center, put screws in the holes that are 16" on center and fasten, ensuring that the screws hit the studs.



Not to exceed 100 pounds per set of hooks or 400 pounds overall.

happy with our products?

Please help us spread the word by leaving a review at: www.SHEDorize.com



SHEDorize

SHEDorize.com

(866) 548-1625

info@amishland.com