

POWER/MODE BUTTON

- Press to turn ON
- Press to change mode:
 1. Flood Light
 2. Red Flood Light
 3. Flashing Red Flood Light
 - 4 Flood Light/Flashing Red Light
 5. Off
- After 5 seconds of no mode change, next button press is OFF

CHANGE BRIGHTNESS

- Press & HOLD to increase/decrease brightness
- Light blinks to indicate minimum or maximum brightness level.

MODE RECALL

FLI Telescoping Light remembers the last used light mode. After 5 seconds of no mode change, next Power Button press is OFF. When pressed again the light will recall last used light mode.

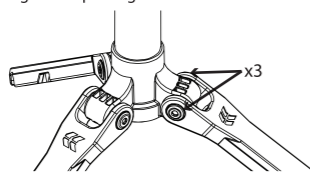
BATTERY LEVEL INDICATOR

Power button battery level indicator LEDs turn on for 5 seconds when light is turned on or off.

100-60%	Green
59-25%	Yellow
24-10%	Red
9-0%	Flashing Red

TRIPOD LEGS MAINTENANCE

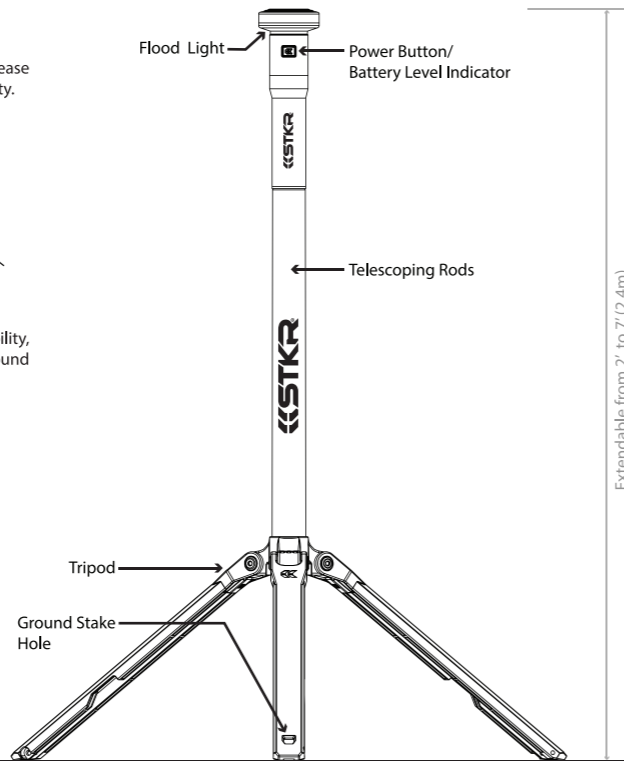
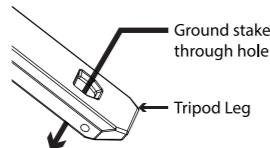
Over time legs can become loose. Please tighten tripod leg screws to ensure stability.



GROUND STAKE

If in a windy situation or need more stability, carefully use ground stakes* through ground stake holes.

*ground stakes not included

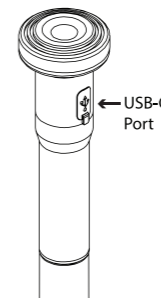


QUESTIONS? Before returning to your retailer, call our customer service department at 704-508-1031, 8 a.m. - 5 p.m. ET, Monday - Friday or email us at info@STKRconcepts.com

704-508-1031 | info@STKRconcepts.com | STKRconcepts.com **STKR**

CHARGING

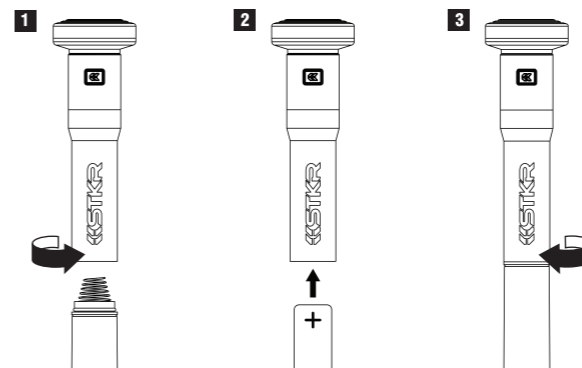
- 1) Remove USB-C port cover
 - 2) Plug the USB-C cable into the USB-C port
 - 3) Plug the other end of the cable into a USB wall charger*, USB car charger*, or any other USB charging device* (e.g. computer). *Not included.
- *Charger output of up to 2A is recommended. Charger output should NOT exceed 3.6A to prevent battery damage.
- Battery Level Indicator lights blink while charging then solid glow when fully charged.
- **Please recharge a stored unit every four months to maintain optimum performance of the lithium-ion batteries and maximize charging levels. Battery excl. from warranty.*



REPLACEABLE BATTERY

Over time battery degradation may occur. To replace a worn out cell follow these steps:

- 1) Unscrew handle from base
- 2) Replace with 18650 or 21700 Lithium-ion rechargeable battery
- 3) Screw handle back on.



SPECIFICATIONS

Model # 14206

LIGHT

700 Total Max True-Lumens
 Flood Light: 700 Lumens (Daylight White)
 Red Flood Light

RUNTIME

Flood Light High: 2 hours (100% brightness)
 Flood Light Low: 10 hours

BATTERY

18650 Rechargeable Lithium-ion
 Capacity: 2600mAh

OTHER

IPX4 Waterproof Rating
 Total Weight: 1.1lb (0.5Kg) [battery incl.]

PACKAGE CONTENTS

- [1] FLI Telescoping Light
- [1] USB-C Cable

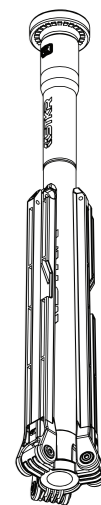
1 Year warranty

LED SAFETY WARNING

This product contains high intensity LED devices. To prevent permanent eye damage, do not stare into the light beam at close range.

LIGHTNING STRIKE HAZARD WARNING

DO NOT USE during a thunderstorm. Before a thunderstorm approaches ensure the FLI Telescoping Light is stored safely. If you are caught outside during a thunderstorm DO NOT STAND NEAR the FLI Telescoping Light. STAY A SAFE DISTANCE AWAY from the FLI Telescoping Light as it can act as a lightning rod. Use all lightning safety measures. Not following thunderstorm/lightning precautions can result in serious injury or death.



Troutman, NC | 704-508-1031 | info@STKRconcepts.com | STKRconcepts.com