

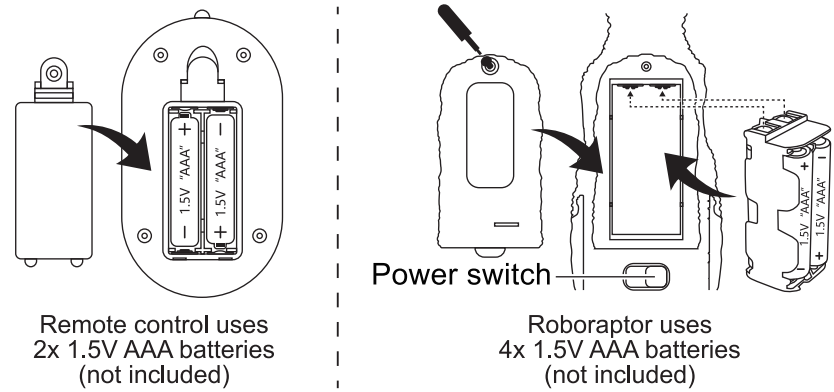
ROBORAPTOR

ITEM# 17013

Recommended for ages 5+. Adult supervision required. Please read and follow this instruction manual.

Battery information:

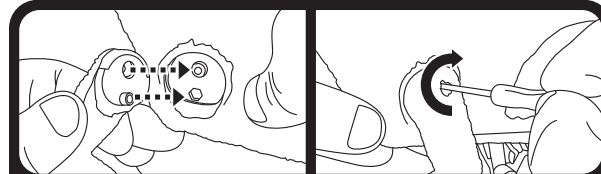
Roboraptor requires 2 x 1.5V AAA batteries for the remote control, and 4 x 1.5V AAA for the raptor. (Batteries are not included) Use the screwdriver to release the screws on the battery cover. Remove the cover and insert the batteries into the slots as per the correct polarity "+/-". Close the cover. Tighten the screw again. Repeat process with the raptor.



Battery Safety Information:

Only adults should install and replace batteries.
Switch toy and remote to OFF before opening battery compartments.
Insert batteries correctly. Match positive+ and negative- signs.
Alkaline batteries are recommended for best performance.
Rechargeable batteries are not recommended.
If rechargeable are used, they are only to be charged under adult supervision.
Rechargeable batteries are to be removed from the product before they are charged.
Do not recharge non-rechargeable batteries.
Only use batteries specified.
Only use batteries of the same or equivalent type that are recommended for use.
Do not mix different types of batteries: alkaline, standard (carbon-zinc), or rechargeable (nickel-cadmium).
Do not mix old and new batteries.
Remove the batteries during long periods of non-use.
Always remove exhausted batteries from toy, and dispose responsibly.
Battery leakage and corrosion can damage this product.
Dispose of batteries safely. Recycle where available.
Do not dispose of batteries in a fire or attempt to open the outer casing.
Never short-circuit the battery terminals.
Do not immerse battery-operated toys in water.

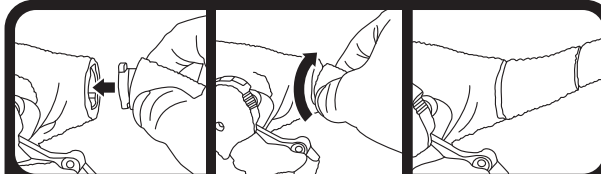
Assembly:



Install the left hand into the hole and tighten it clockwise with the screwdriver.



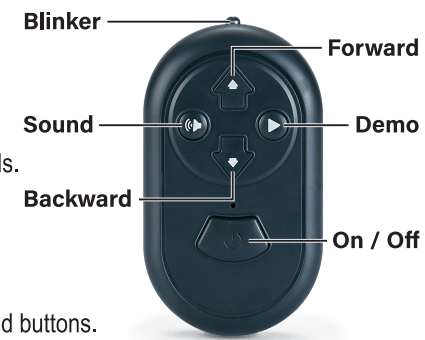
Install the right hand into the hole and tighten it clockwise with the screwdriver.



Insert the tail and tighten it clockwise. There will be a sound when it is screwed in place.

Remote Control:

Turn the switch under the raptor from OFF to On.
Press the ON button on the remote.
The forward button will make Roboraptor walk forward.
The backward button will make Roboraptor walk backwards.
The sound button will make Roboraptor roar and light up.
The Demo button will make Roboraptor perform a demo of his different movements and sounds.
When controlling Roboraptor, please make sure to point the blinker at the raptor when pressing any of the command buttons.



Jupiter Creations

© 2022 Jupiter Creations, Inc. All rights reserved
www.jupitercreations.com

