



RED SHED
HOME & GIFTS

RUSTIC • VINTAGE • CLASSIC

RS 10FT SKELETON

Instruction Manual
SKU# 2085884

Thank you for purchasing the Life-Skeleton with Lighted Eyes!
Below you'll find assembly instructions and other information to get maximum enjoyment from your purchase!

Please read instructions carefully before use. Retain for future reference.

PACKAGE CONTENTS

LABELLED PARTS



Front Base

Back Base

Right Foot

Left Foot

Right Fibula
Left Fibula



Right Femur
Left Femur

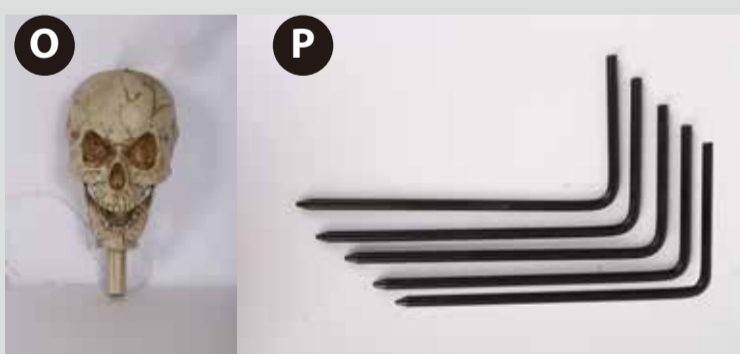
T-Bar
Support Pole

Pelvis

Ribcage

Spine

Right Arm
Left Arm



Skull

Ground Stakes

A. Front Base	1pc	I. T-Bar Support Pole	1pc
B. Back Base	1pc	J. Pelvis	1pc
C. Right Foot	1pc	K. Ribcage	1pc
D. Left Foot	1pc	L. Spine	1pc
E. Right Fibula	1pc	M. Right Arm	1pc
F. Left Fibula	1pc	N. Left Arm	1pc
G. Right Femur	1pc	O. Skull	1pc
H. Left Femur	1pc	P. Ground Stakes	5pcs

PREPARATION

Estimated Assembly Time: 15 - 20 minutes

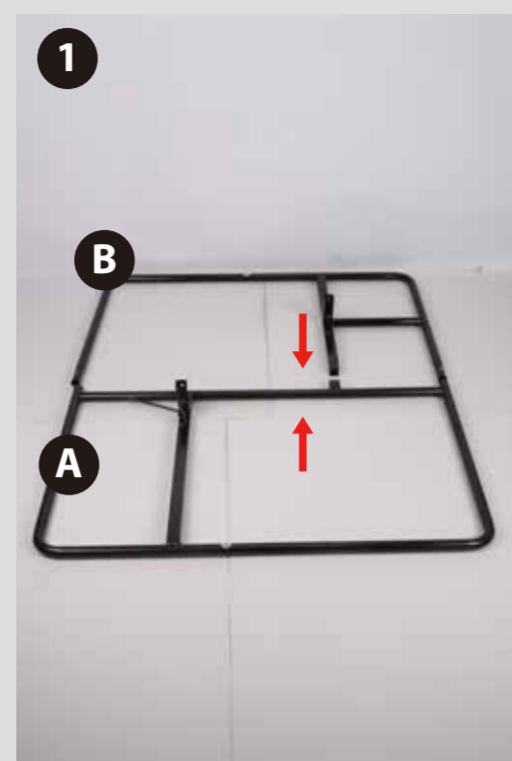
Before assembling the product, carefully remove all parts from the box and lay out on a flat surface.

Make sure all parts are present. Compare parts with package contents list.

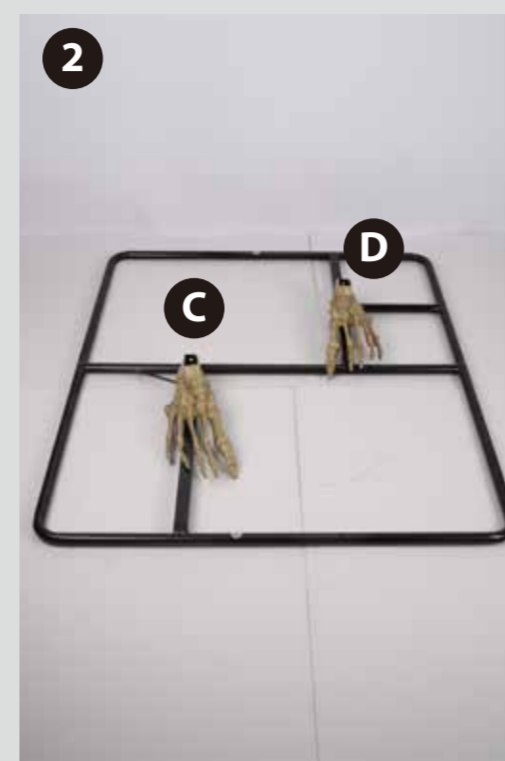
If any part is missing or damaged, do not attempt to assemble, install or operate the product.

Read through directions before assembling.

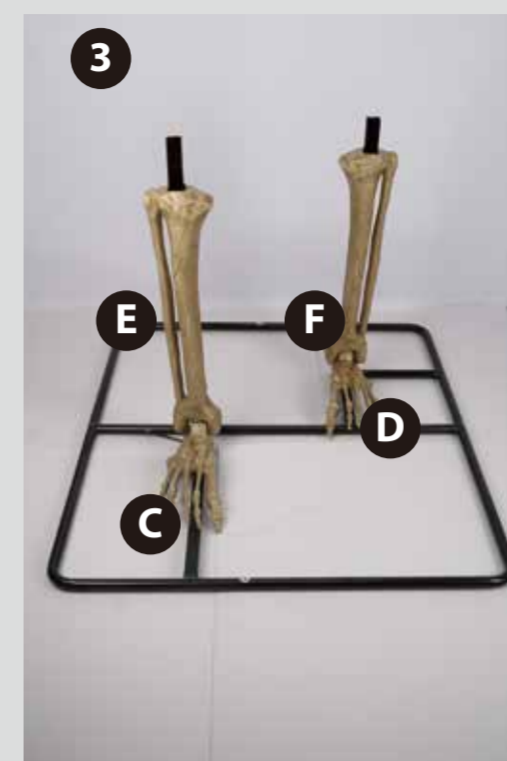
ASSEMBLY INSTRUCTIONS



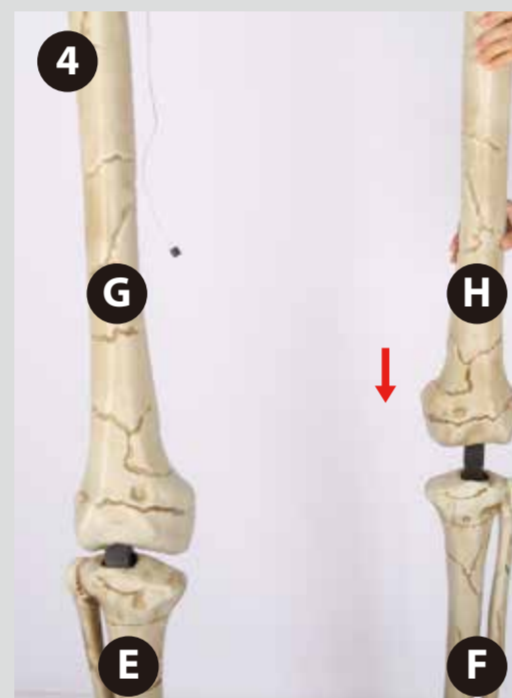
1. Set front and back base parts (A and B) on a level and stable surface. Connect the two base parts and ensure the pushpins are locked in place.



2. Take right foot (C) and place the heel over the post on the front base (A). Repeat the process with the left foot (D) and back base (B).



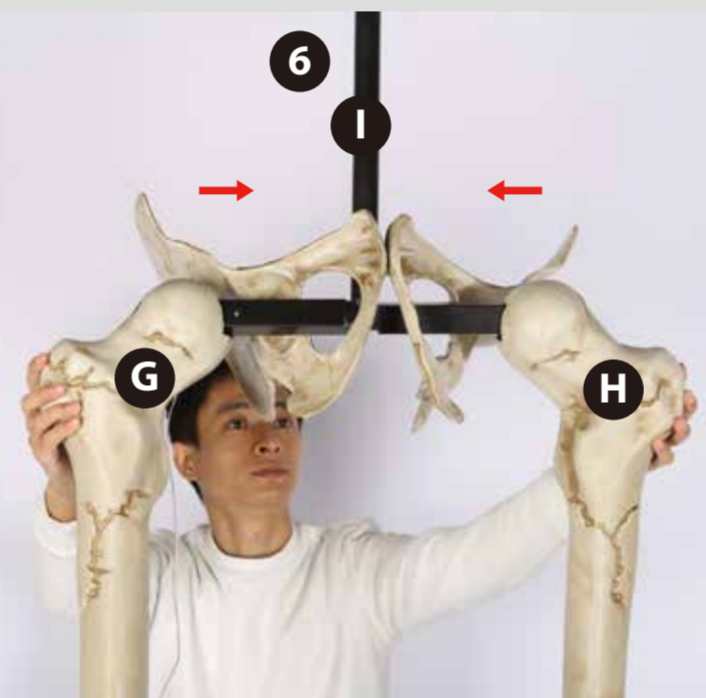
3. Place right fibula (E) onto the right foot (C). Repeat the process for the left fibula (F) and the left foot (D).



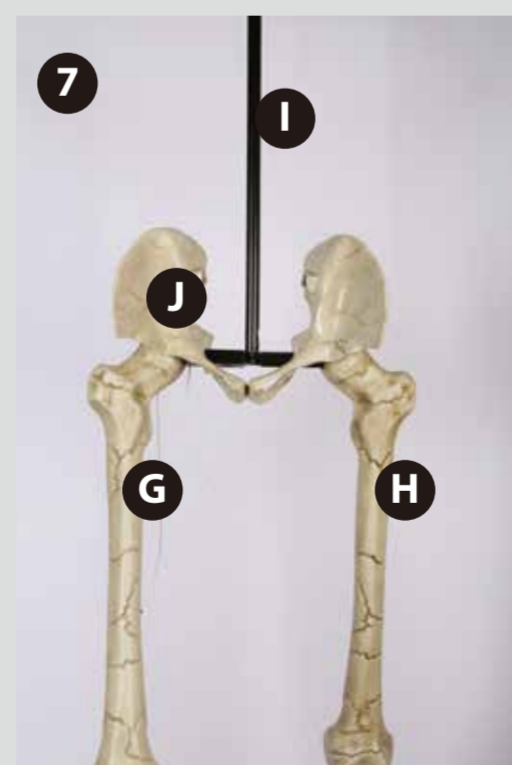
4. Place right femur (G) onto the right fibula (E). Repeat the process for the left femur (H) and left fibula (F).



5. Insert the T-bar (I) into the openings of the lower pelvis (J).



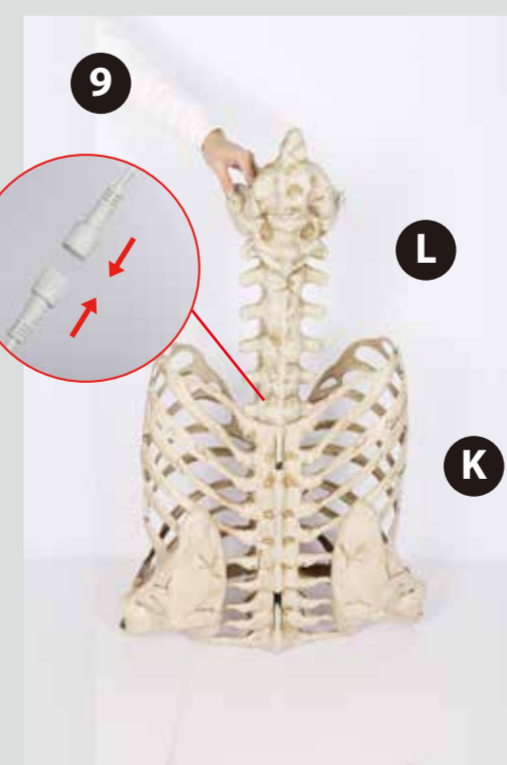
6. Connect the pelvis (J) and T-bar (I) to the upper femurs (G,H) by sliding the "T" into the corresponding openings of the bones. Push together and lock into place.



7. Ensure the pelvis (J) is in the upright position and locked into place with the pole of the T-bar (I) positioned upward.

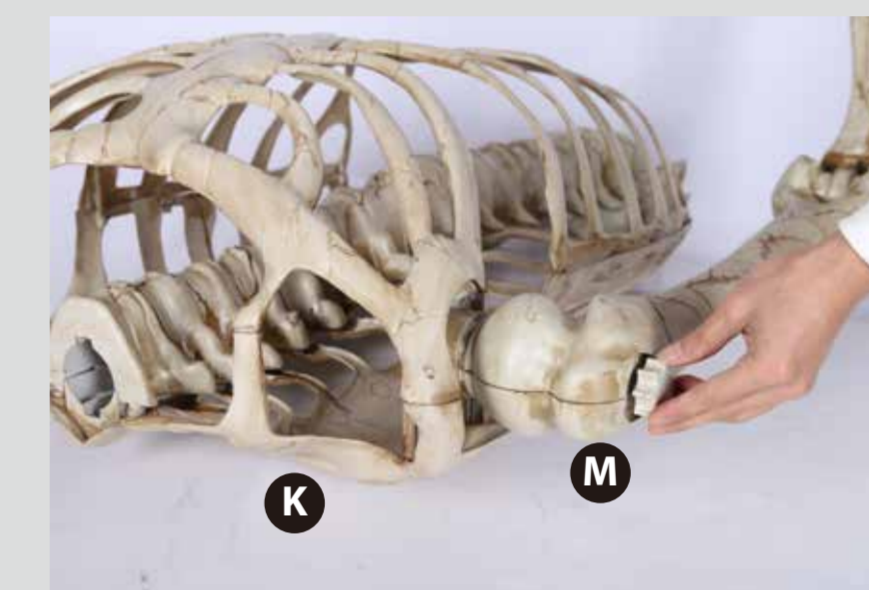
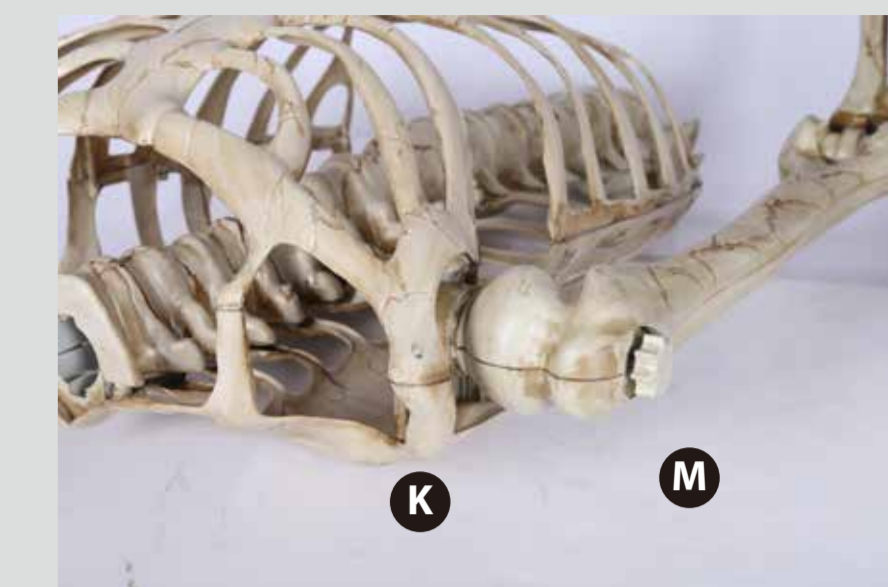
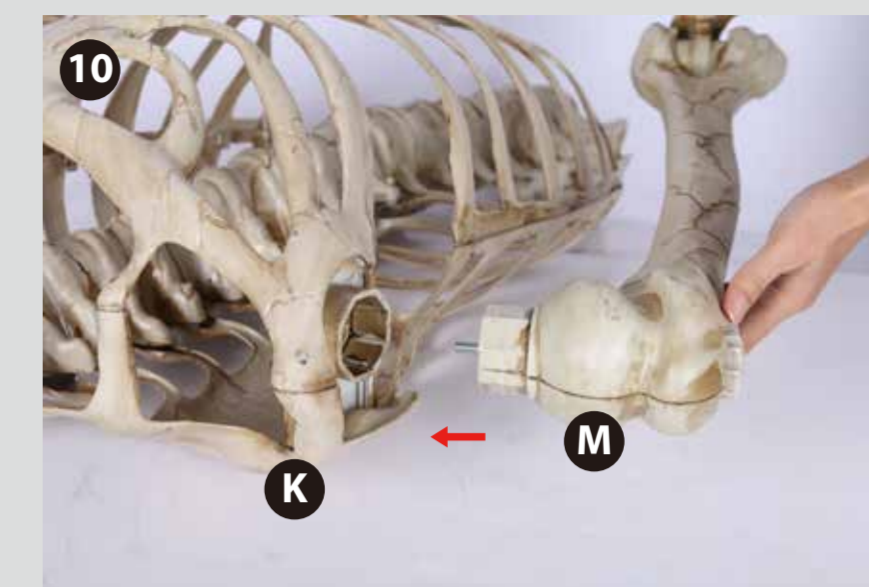


8. Connect the ribcage (K) and spine (L) by placing the ribcage (K) upside down on a flat surface. With the spine (L) upside down, slide it onto the ribcage (K) and lock into place.

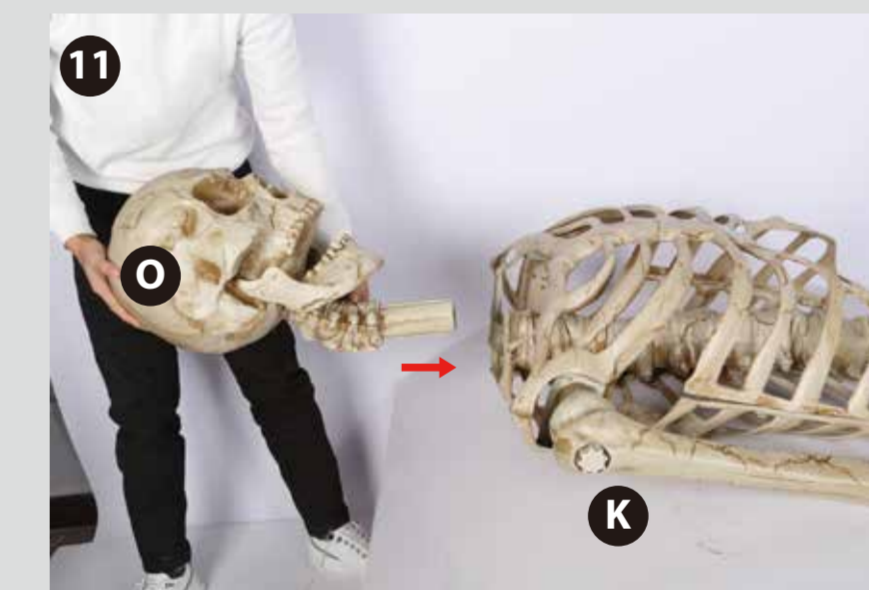


9. Connect the wires between ribcage (K) and spine (L).

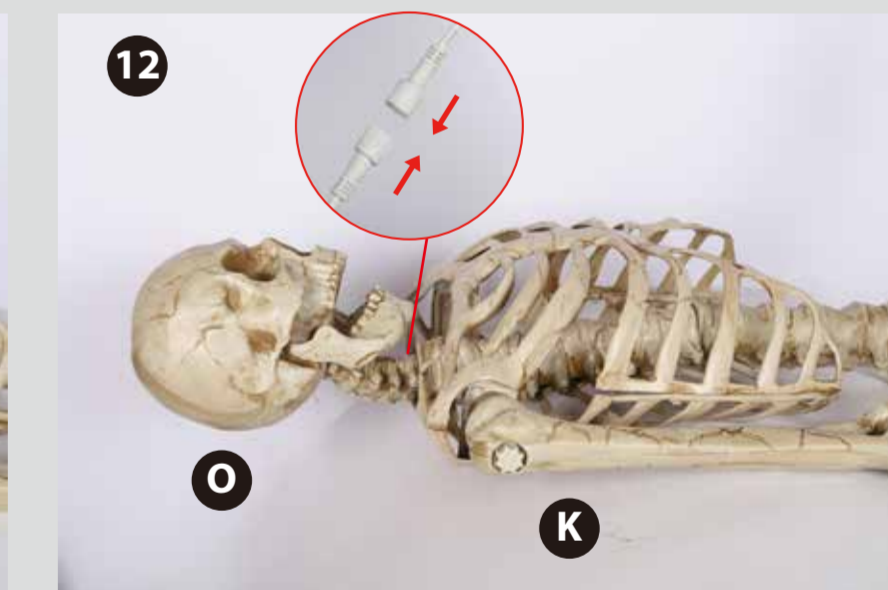
ASSEMBLY INSTRUCTIONS



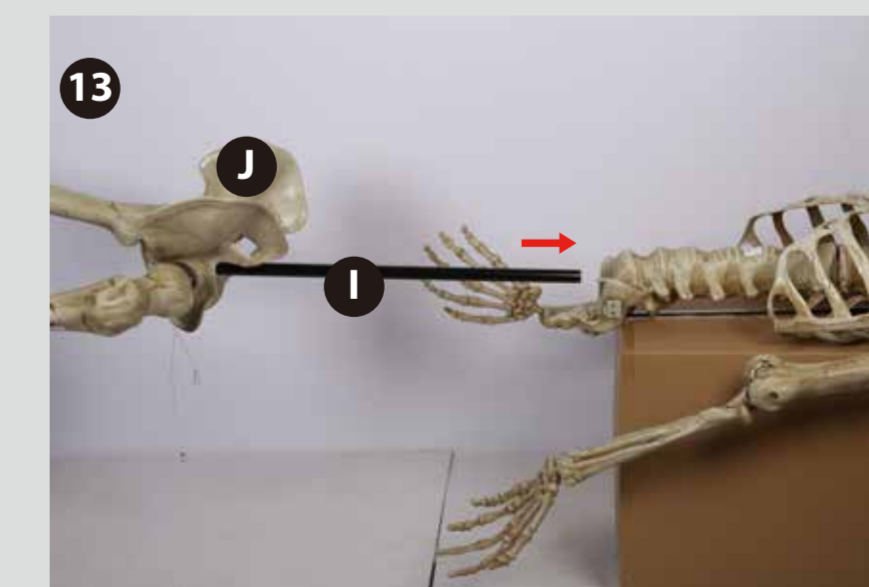
10. Lay flat the connected ribcage and spine (K,L) to attach the arms (M,N). Insert the right arm (M) into the upper body (K,L). Repeat process for the left arm (N).



11. Insert skull (O) into the top of the body.



12. Connect the wires between skull (O) and assembled body.

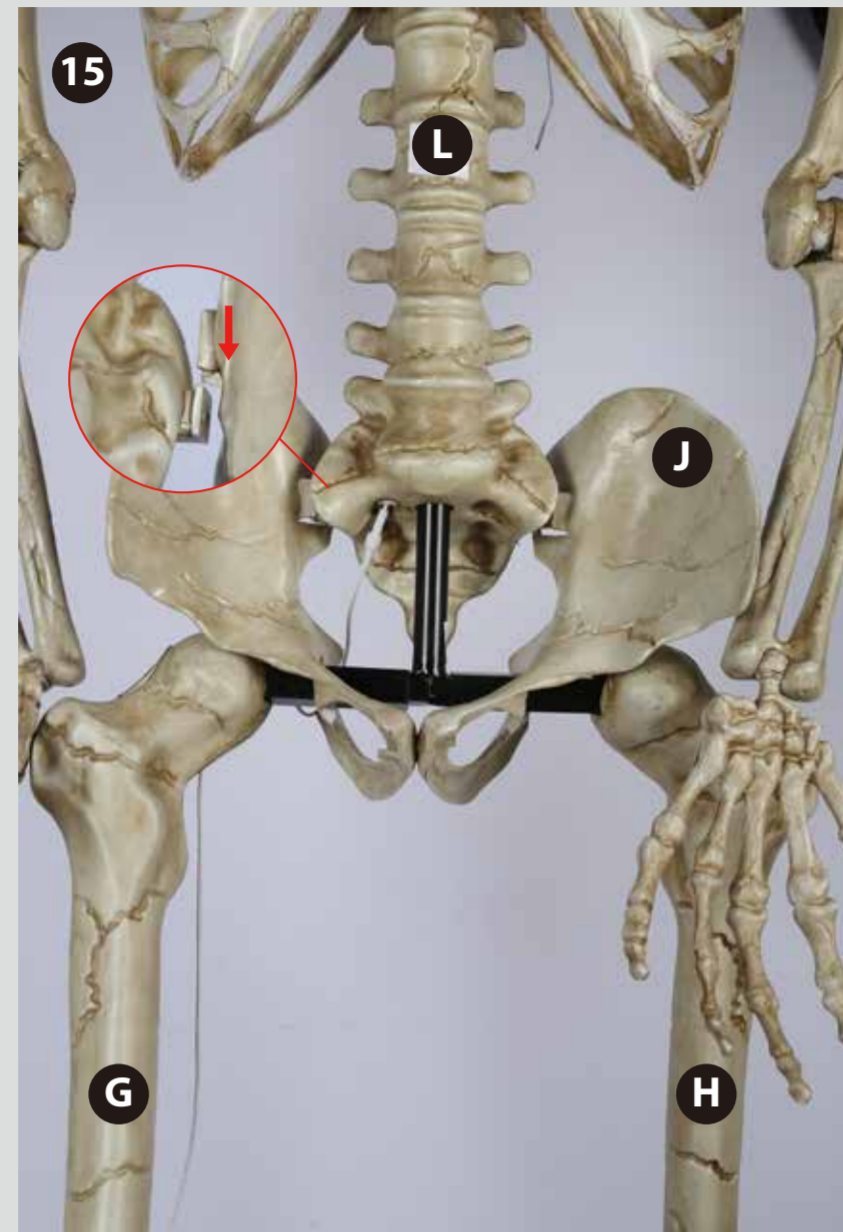


13. The recommended method to attach the upper body and lower body is to lay each section flat. Place the assembled upper body onto the item's box. Lift the lower body and slide the T-bar (I) into the spine (L) and gently lock into place.

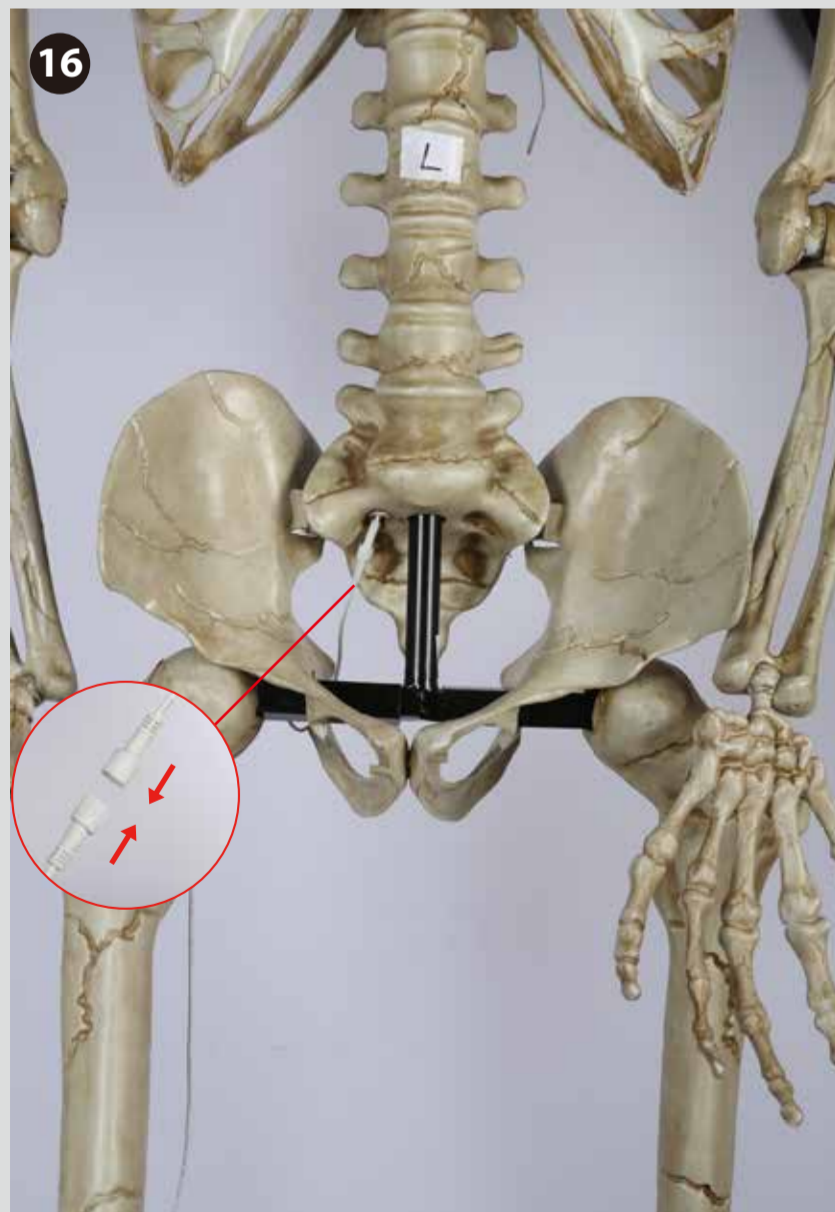
ASSEMBLY INSTRUCTIONS



14. With two adults, carefully raise the fully assembled skeleton into a standing position.



15. Connect the pelvis (J) to the lower section of the spine (L) by sliding into the slot on each side.



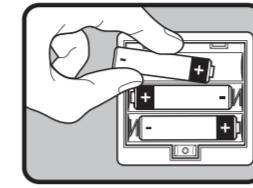
16. Connect the wires between right femur (G) and spine (L).



17. Carefully adjust fully assembled skeleton into desired location. Secure with ground stakes inserted through the holes in the base (A,B) and pressed fully into the ground (with one end of the stake in the base and one in the ground). Use two stakes in the front and two stakes in the back.

18. For constant light, slide toggle switch to "ON" position. Slide toggle switch to "OFF" position to operate with "Try Me" button.

FUNCTIONALITY



INSTRUCTIONS: Requires 3 AA batteries (included). 1. Carefully remove product from package. 2. Battery compartment is located on the back of the right leg. See illustration to insert batteries. 3. "ON" SETTING: Activates constant lighting. 4. "OFF" SETTING: Operates with push-button activation only using the TRY ME button. 5. Replace batteries if light dims. **BATTERY USAGE:** See illustration.

1. Keep these instructions for future reference because they contain important information. 2. May explode or leak and cause burn injury if recharged, disposed of in fire, mixed with a different battery type, inserted backwards or disassembled. 3. Products that contain batteries should not be disposed of in fire. The batteries inside may explode or leak. 4. Do not mix alkaline, standard (carbon-zinc) or rechargeable (nickel-cadmium) batteries. 5. Do not mix old and new batteries. Replace all batteries of a set at the same time. 6. Use only batteries of the same or equivalent type as recommended by the manufacturer. 7. Be sure to insert batteries with correct polarities and always follow manufacturers' instructions. 8. Remove exhausted batteries from product promptly. 9. Do not short-circuit supply terminals. 10. Remove batteries before storage or extended periods of non-usage. 11. Clean the contacts on the batteries and the device prior to battery installation. Non-rechargeable batteries are not to be recharged. Rechargeable batteries are not recommended for use in this product. If rechargeable batteries are being used, however, please follow these guidelines. 1. Rechargeable batteries should be removed from the product before being charged. 2. Rechargeable batteries should only be charged under adult supervision. **ATTENTION:** Includes 3 AA batteries for in-store demonstration only. Manufacturer makes no guarantee as to the demonstration battery life. The consumer is responsible for replacing batteries with fresh cells to ensure proper operation. **ADULT SUPERVISION IS RECOMMENDED WHEN REPLACING BATTERIES.** For indoor and outdoor use. This item is not a toy and should be used for decorative purposes only.

STORAGE

Do not discard box as it should be used for storage. Return all parts to the original packaging. Store in a cool, dry location.

SAFETY WARNINGS

Remove all plastic fasteners and tags. These are part of the packaging and should be discarded. For indoor and outdoor use. This item is not a toy and should be used for decorative purposes only.

WARNING

This device complies with Part 15 of the FCC Rules. Operation is subject to the following two conditions: (1) this device may not cause interference (2) this device must accept any interference, including interference that may cause undesired operation of the device.

CAUTION: Changes or modifications not expressly approved by the party responsible for compliance could void the user's authority to operate the equipment.

NOTE: This equipment has been tested and found to comply with the limits of a Class B digital device, pursuant to Part 15 of the FCC Rules.

These limits are designed to provide reasonable protection against harmful interference in a residential installation. This equipment generates, uses, and can radiate radio frequency energy and, if not installed and used in accordance with the instructions, may cause harmful interference to radio communications. However, there is no guarantee that interference will not occur in a particular installation. If this equipment does cause harmful interference to radio or television reception, which can be determined by turning the equipment off and on, the user is encouraged to try to correct the interference by one or more of the following measures:

- Reorient or relocate the receiving antenna.
- Increase the distance between the equipment and receiver.
- Connect the equipment into an outlet on a circuit different from that to which the receiver is connected.
- Consult the dealer or an experienced radio/TV technician for help.

Distributed by **TRACTOR SUPPLY COMPANY**
 5401 Virginia Way, Brentwood TN 37027
 For customer support call 1-888-376-9601
www.TractorSupply.com
 MADE IN CHINA



THESE INSTRUCTIONS APPLY
 TO THE FOLLOWING ITEM NUMBER
 2085884