



Wheel Warranty Conditions



| COVERED Warranty Conditions | NOT COVERED Warranty Conditions |
|--|---|
| <p>PAINT (1-Year):</p> <ul style="list-style-type: none"> • Corrosion • Clear Coat Peeling • Chrome/Galvanized Corrosion <p>CONSTRUCTION:</p> <ul style="list-style-type: none"> • Pinhole Leak • Nonconforming Weld <p>OTHER:</p> <ul style="list-style-type: none"> • Aluminum Lifetime Structural Warranty <ul style="list-style-type: none"> ○ Under intended use for original owner • Steel Lifetime Structural Warranty <ul style="list-style-type: none"> ○ Under intended use for original owner | <p>ROAD HAZARDS:</p> <ul style="list-style-type: none"> • Curbing • Bent • Impact Damage • Tire Ran Underinflated to Destruction <p>DAMAGE:</p> <ul style="list-style-type: none"> • Improper Repair • Modification • Mounting Damage • Chemical Contamination • Fire Damage • Vandalism <p>OTHER:</p> <ul style="list-style-type: none"> • Cannot Balance • Over 1-year for appearance • Over 1-year for steel structural • Unit Damages (Fender, Structure, Cargo, etc.) |

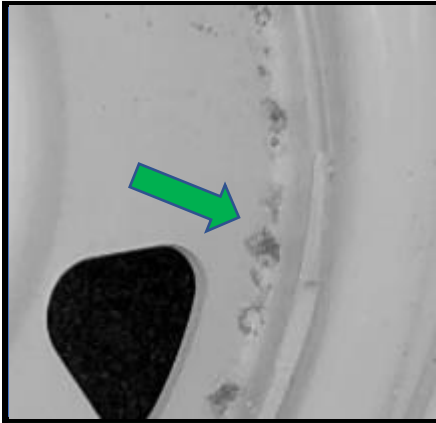
IMPORTANT: The adjustment process does not involve the kind of analysis necessary to determine the existence of a covered warranty condition. The conditions shown are for illustration only and should not be considered as proof of workmanship or material condition. A wheel may be adjusted for a condition that may have resulted from one of many possible causes. Neither the presence of a condition nor the fact that a wheel is adjusted for a condition establishes that a problem exists in the wheel.



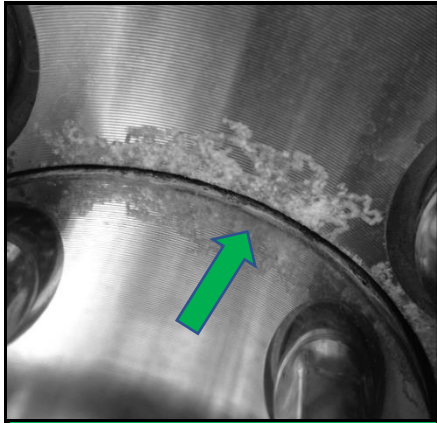
Wheel Warranty Conditions



COVERED



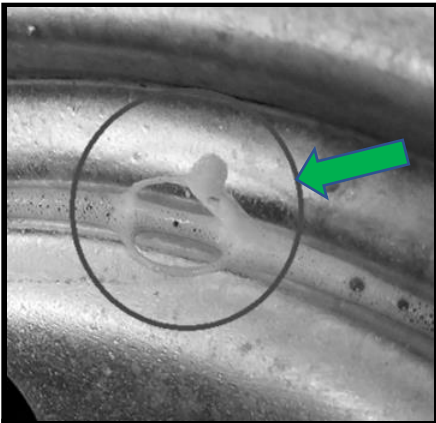
Paint Corrosion (1-year)



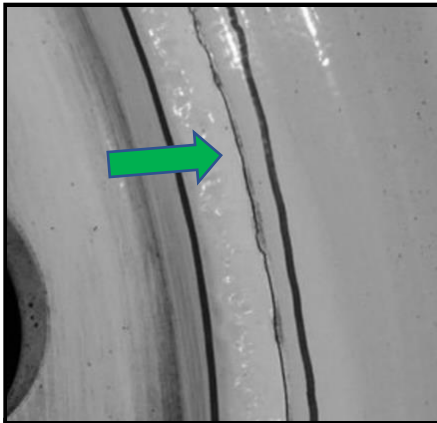
Clear Coat Peeling (1-yr)



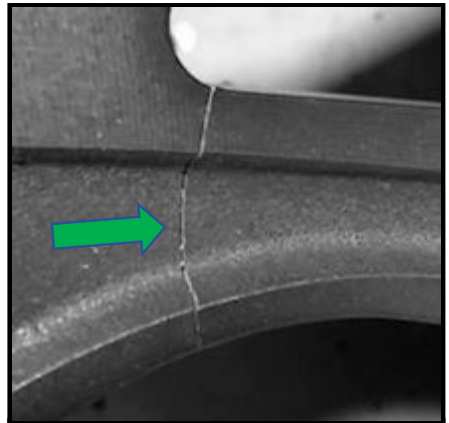
Chrome/Galvanized (1-yr)



Pinhole Leak



Nonconforming Weld



Structural

IMPORTANT: The adjustment process does not involve the kind of analysis necessary to determine the existence of a covered warranty condition. The conditions shown are for illustration only and should not be considered as proof of workmanship or material condition. A wheel may be adjusted for a condition that may have resulted from one of many possible causes. Neither the presence of a condition nor the fact that a wheel is adjusted for a condition establishes that a problem exists in the wheel.



Wheel Warranty Conditions



NOT COVERED



Curbing



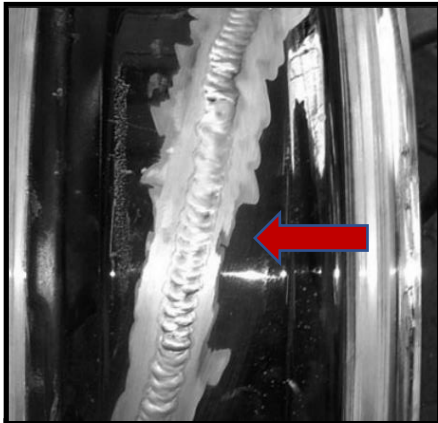
Bent



Impact Damage



Ran Underinflated to Destruction



Improper Repair



Modification



Chemical Contamination



Fire Damage



Vandalism

IMPORTANT: The adjustment process does not involve the kind of analysis necessary to determine the existence of a covered warranty condition. The conditions shown are for illustration only and should not be considered as proof of workmanship or material condition. A wheel may be adjusted for a condition that may have resulted from one of many possible causes. Neither the presence of a condition nor the fact that a wheel is adjusted for a condition establishes that a problem exists in the wheel.
Rev 0620