



WINTER 2022

NEW PRODUCT CATALOG

DK2 CANADA

5330 Mainway
Burlington, Ontario
L7L 6A4, Canada

DK2 USA WEST

4301 S Valley View Blvd
Suite 10-11, Las Vegas
Nevada, 89103, United States

DK2 USA EAST

3750 South Avenue
North Unit, Toledo, Ohio
43615, United States

1 (888) 277-6960
info@detailk2.com
detailk2.com



FEATURES

FULLY HYDRAULIC EVEREST SNOW PLOW

ITEM NUMBER

EVST9022

UPC

826518005579



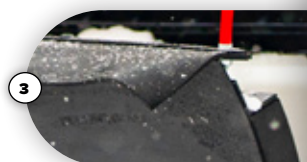
DESCRIPTION

This prosumer, fully hydraulic snow plow kit provides you the opportunity to clear your parking lot, driveway, or lane way whenever required. With our fully hydraulic system you can raise, lower, and angle the snow plow blade from inside your vehicle using our wired hand held remote. For extreme durability against the elements and rust, DK2 combines an industrial powder-coated paint finish on the blade with hot dipped galvanized hardware components to keep your plow looking new for years.

The plow itself simply clips to a DK2 custom fitted vehicle mounting system and can pretty much mount to anything that's fit to push snow.

SPECIFICATION

BLADE DIMENSIONS	88" (w) x 22" (h) 223.5 cm (w) x 55.9 cm (h)
LIFTING MECHANISM	Hydraulic
ANGLING SYSTEM	Hydraulic (Multiple Positions)
CONTROL SYSTEM	Wired Remote Control Lifts, Lowers, Angles Left or Right
MOUNTING	Custom Bolt-on Mounting Brackets *Sold Separately
CONSTRUCTION	Steel Tube and Sheet
COLOR/FINISH	Black Industrial Powder Coated
SCRAPER BLADE	Powder Coated Steel (Replaceable)
WEIGHT	425 lb 192.8 kg
SHIPPING WEIGHT	450 lb 204.1 kg
SHIPPING DIMENSIONS	48" (l) x 42" (w) x 40" (h) 121.9 cm (l) x 106.7 cm (w) x 101.6 cm (h)
INCLUDED	Snow Deflector Skid Shoes



FEATURES

- Ships partially assembled (mount & wiring required)
- Simple bolt on custom fitted mounting brackets, no drilling or welding required (sold separately)
- Hydraulic lifting mechanism **1**
- Wired hand held control **2**
- Black UV powder coated components with an industrial painted blade skin **3**
- Self-leveling foot provides max blade tip clearance when the blade is fully raised
- Skid shoes to assist guiding the blade edge over uneven terrain or from possibly marking those more delicate driveways
- Deflector to direct snow forward minimizing windshield spray **4**
- Blade hardware holds the hydraulic pump so it can be rolled away from the vehicle rather than being left on the truck with the mount
- Thicker trip springs to ensure tension remains strong and keeps coils tight for optimal performance when encountering obstacles
- Existing holes in plow frame make it easy to add bolt-on accessories



5 INCH KINETIC CHIPPER

ITEM NUMBER

OPC525

FEATURES

- Powered by a KOHLER® CH395 9.5 HP 4000 RPM Command Pro Commercial Engine
- Dual tool-free swing open chutes for easy drum access **1**
- Chips through trees and branches up to 5 inches in diameter
- Dual belt drive drum transmission with dual edge reversible cutters for trees and brush up to 5 inches in diameter
- Bearing mounted ATV rims and tires for off-road performance **2**
- E-stop safety shutoff
- 180° tool-free rotational spout on chip chute
- Extra large reinforced feed chute with equipment moving handles **3**
- Tow bar and 2" coupler included **4**
- Includes 3 year KOHLER® Commercial warranty and 1 year DK2 Chassis warranty

DESCRIPTION

The DK2 Power 5 inch 9.5 HP Chipper features dual swing chutes, dual edge reversible high speed cutting blades, Bearing mounted ATV tires and rims and built in toolbox. Extended load chute with safety E-Stop. The KOHLER® Commercial Command Pro engine has a 3-Year Kohler warranty. The 9.5 hp 4000 RPM delivers tremendous torque for superior cutting performance. Dual V belt direct drive and kinetic cyclonic drum pulverize up to 5 inch diameter trees. For increased longevity, the blades are double edge cut reversible. The tool-free dual swing chutes quickly open for easy drum access. The feed chute features dual integrated handles for easy equipment moving, a quick-drop stand, and a 1 7/8 inch ball removable tow bar. Schedule 80 tool free chip chute pipe rotates 180 degrees. Includes bonus built in full size tool box.

SPECIFICATION

ENGINE MODEL	KOHLER® CH395
ENGINE	9.5 HP 4000 RPM Command Pro Commercial
TREE DIAMETER	5"
CHIPPER	Auto Adjusting up to 5" Dia. Trees and Brush
CUTTING BLADES	Double-Edge Cut Reversible
EXPULSION CHUTE	Tool-Free Swing Open and Adjustable 180°
WHEELS	Bearing Mounted ATV Rims and Tires (Off-Road Only)
WARRANTY	3 Year Engine 1 Year Chassis



5 INCH TRAILERED KINETIC CHIPPER SHREDDER

ITEM NUMBER

OPC535

FEATURES

- Powered by a KOHLER® CH395 9.5 HP 4000 RPM Command Pro Commercial Engine
- Chips through trees and branches up to 5 inches in diameter
- Auto adjusting, dual edge reversible cutters for trees and brush up to 5 inches in diameter
- Side chute equipped with direct drive cyclonic shredder with quad hammers
- Triple swing open chutes for easy interior access **1**
- D.O.T. approved tires up to 25 MPH **2**
- 180 degree rotational spout on extended cast chute **3**
- Unit sits on an extended 36" wheel base trailer with a tow bar and dolly included **4**
- Includes 3 year KOHLER® Commercial warranty and 1 year DK2 Chassis warranty

DESCRIPTION

This DK2 Power 5 inch Kinetic Chipper Shredder is powered by none other than the KOHLER® CH395 9.5 HP 4000 RPM Command Pro Commercial Engine. Maintaining your machine has never been easier with the triple swing-open chutes to access the unit's interior comfortably. Inside the kinetic drum lies reversible, dual edge blades that cut through trees up to 5 inches in diameter and expel the wood with the extended cast chip chute head that rotates 180° for controlled deflection. Additionally, the OPC535 is designed with a side hopper for leaves, branches, and garden compost, shredded by a direct drive cyclonic disk equipped with quad hammer cutters. The trailer sits on an extended 36-inch wheel base with a tow bar and wheel dolly included, making this all-in-one trailer chipper shredder everything you need when it comes to chipping wood.

SPECIFICATION

ENGINE MODEL	KOHLER® CH395
ENGINE	9.5 HP 4000 RPM Command Pro Commercial
TREE DIAMETER	5"
CHIPPER	Auto Adjusting up to 5" Dia. Trees and Brush
CUTTERS	Dual Edge Reversible Blades / Quad Hammers
EXPULSION CHUTE	Tool-Free Swing Open and Adjustable 180°
WHEELS	D.O.T. (Approved up to 25 MPH)
WARRANTY	3 Year Engine 1 Year Chassis



8 INCH TRAILERED DEBRIS CHIPPER

ITEM NUMBER

OPL306

FEATURES

- Powered by a KOHLER® CH440 14 HP 3600 RPM Command Pro Commercial Engine
- Sucks up and chips debris up to 8" in diameter
- High-speed cyclonic cutting disk
- Extended pickup bed height expulsion chute **1**
- D.O.T. approved tires up to 25 MPH **2**
- Unit sits on a trailer for extra durability on the road **3**
- 8" vacuum hose that collects approx. 126 cu ft/h (3.6 cbm/h) **4**
- Includes 3 year KOHLER® Commercial warranty and 1 year DK2 Chassis warranty

DESCRIPTION

This 8 inch trailered chipper pulverizes large amounts of debris with a powerful direct drive KOHLER® CH440 14 HP 3600 RPM Command Pro Commercial Engine, a cyclonic high-speed cutting disk, and an 8 inch vacuum hose that is capable of sucking up almost 126 cubic ft/h (3.6 cbm/h).

Let the unit do the work for you with the pickup bed height extended expulsion chute, deflecting all debris into the bed of your pickup truck with ease.

The OPL306 sits on a trailer equipped with D.O.T. tires approved for up to 25 MPH.

SPECIFICATION

ENGINE MODEL	KOHLER® CH440
ENGINE	14 HP 4000 RPM Command Pro Commercial
TREE DIAMETER	8"
CHIPPER	Cyclonic High-Speed Cutting Disk
EXPULSION CHUTE	Extended Pickup Bed Height
WHEELS	D.O.T. (Approved up to 25 MPH)
WARRANTY	3 Year Engine 1 Year Chassis



27 TON VERTICAL LOG SPLITTER

ITEM NUMBER

OPS227

FEATURES

- Powered by a KOHLER® RH265 6.5 HP 3600 RPM 2000 Series Engine
- 25.5" x 19.6" (64.77 cm x 49.8 cm) log capacity
- Welded cross wedge ¹
- 16-17 second cycling time
- 16" 4.8-8 tires (NOT highway towable) ²
- Folds 90° upward for vertical log splitting ³
- Includes 2 year KOHLER® warranty and 1 year DK2 Chassis warranty



DESCRIPTION

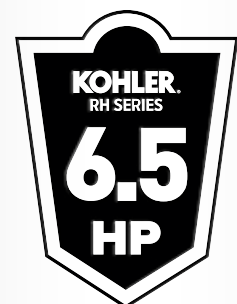
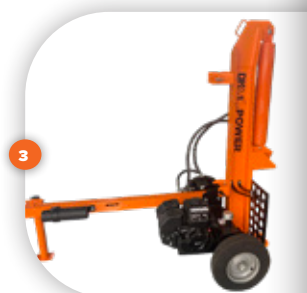
Introducing the 27 ton vertical log splitter, the DK2 Power OPS227, powered by the KOHLER® 2000 Series RH265 6.5 HP 3600 RPM Engine, featuring user-friendly engine features like *Accu-Fill* and *Easy-Pull* technology.

This machine is capable of splitting up to 25.5 inches in length and 19.6 inches in diameter with uncompromising force at a cycle speed of 16-17 seconds, all while using the full potential of its welded cross wedge.

The OPS227 sits on 16 inch 4.8-8 tires and includes a tow bar for easy job site moving. This unit is not designed for highway towing.

SPECIFICATION

ENGINE MODEL	KOHLER® RH265
ENGINE	6.5 HP 3600 RPM 2000 Series
LOG CAPACITY	25.5" (L) x 19.6" (D) 64.77 cm (L) x 49.8 cm (D)
WEDGE	Welded Cross
CYCLE SPEED	16-17 Seconds
WHEELS	16" 4.8-8 (NOT for Highway Towing)
WARRANTY	2 Year Engine 1 Year Chassis



35 TON VERTICAL LOG SPLITTER

ITEM NUMBER

OPS235

FEATURES

- Powered by a KOHLER® CH395 9.5 HP 4000 RPM Command Pro Commercial Engine
- 25.5" x 21.6" (64.77 cm x 54.9 cm) log capacity
- Welded cross wedge **1**
- 16-17 second cycling time
- 16" 6.5-8 tires (NOT highway towable) **2**
- Folds 90° upward for vertical log splitting **3**
- Includes 3 year KOHLER® Commercial warranty and 1 year DK2 Chassis warranty

DESCRIPTION

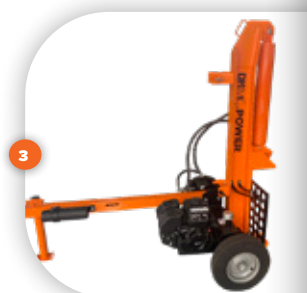
Introducing the 35 ton vertical log splitter. Similar to the 27 ton model, the DK2 Power OPS235 is capable of splitting the same lengths, but has a higher capacity for log diameter and is driven by a more powerful KOHLER® CH395 9.5 HP 4000 RPM Command Pro Commercial Engine, featuring Quad-Clean™ cyclonic engine air filtering and a larger-capacity fuel tank.

This machine is capable of splitting up to 25.5 inches in length and 21.6 inches in diameter with uncompromising force at a cycle speed of 16-17 seconds, all while using the full potential of its welded cross wedge.

The OPS235 sits on 16 inch 6.5-8 tires and includes a tow bar for easy job site moving. This unit is not designed for highway towing.

SPECIFICATION

ENGINE MODEL	KOHLER® CH395
ENGINE	9.5 HP 4000 RPM Command Pro Commercial Series
LOG CAPACITY	25.5" (L) x 21.6" (D) 64.77 cm (L) x 54.9 cm (D)
WEDGE	Welded Cross
CYCLE SPEED	16-17 Seconds
WHEELS	16" 6.5-8 (NOT for Highway Towing)
WARRANTY	3 Year Engine 1 Year Chassis



17 x 21 INCH GAS POWERED PLATE COMPACTOR

ITEM NUMBER

OPV425

FEATURES

- Powered by a KOHLER® CH270 7 HP 4000 RPM Command Pro Commercial Engine
- Conveniently placed, foldable handles for easy transportation and storage **1**
- Open design to reduce dirt build-up **2**
- Central-mounted, fully enclosed exciter for even compactive force over entire base plate **3**
- Includes 3 year KOHLER® Commercial warranty and 1 year DK2 Chassis warranty

DESCRIPTION

Featuring a large 17" x 21" base plate, the OPV425 Plate Compactor doesn't disappoint when it comes to performance, and the power that drives this machine comes from a KOHLER® CH270 7 HP 4000 RPM Command Pro Commercial Engine.

With a compacting force of 3,600 pounds (16 kilonewtons) at 4,750 vibrations per minute, this unit is the perfect solution for your compacting needs.

Designed with conveniently placed, foldable handles for easy transportation and storage, open design to reduce dirt build-up, and a central-mounted, fully enclosed exciter for even compactive force over the entire base plate.

SPECIFICATION

ENGINE MODEL KOHLER® CH270

ENGINE 7 HP 4000 RPM Command Pro Commercial

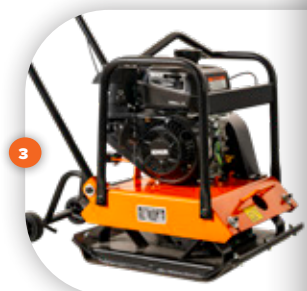
BASE PLATE 17" x 21" (43.2 cm x 53.3 cm)

VIBRATION FREQUENCY 4,750 vpm

CENTRIFUGAL FORCE 3,600 lbf (16 kn)

COMPACTION DEPTH 11.8" (30 cm)

WARRANTY 3 Year Engine
1 Year Chassis



15 INCH STUMP GRINDER

ITEM NUMBER

OPG765

FEATURES

- Powered by a Briggs and Stratton® 12V332-0013-F1 Vanguard 6.5 HP Commercial Engine **1**
- 15" stump diameter capacity
- Greenteeth® 900 series tri-cut teeth **2**
- Hand controlled, hydraulic braking system
- Removable handle
- Bearing wheels (NOT highway towable)
- Torque converter that drives higher speeds and smoother acceleration
- Chain drive cutting axle
- Diamond steel plate decking with reinforced frame
- Includes 2 year Briggs and Stratton® Commercial warranty

DESCRIPTION

Bring efficiency to another level with the DK2 Power 15 inch OPG765 Stump Grinder. Powered by the Briggs and Stratton® 12V332-0013-F1 Vanguard 6.5 HP Commercial Engine featuring Overhead Valve (OHV) Technology, Dura-Bore™ Cast Iron Cylinder Sleeve, a Magnetron® Electronic Ignition and much more.

This unit is upgraded with the extremely efficient Greenteeth® 900 Series tri-cut teeth, driven by a smooth, high-speed v-belt torque converter 12T 35P chain cutter wheel, allowing the teeth to pulverize through stumps with ease.

Stay comfortable with the hydraulic hand control braking system for easy pivot cutting, and secure with the Diamond Plate decking with heavy duty unit frame.

SPECIFICATION

ENGINE MODEL	Briggs and Stratton® 12V332-0013-F1 Vanguard
ENGINE	Vanguard 6.5 HP Commercial Engine
STUMP DIAMETER	15"
CUTTERS	Greenteeth® 900 Series
BRAKING	Hand Controlled, Hydraulic
WHEELS	Bearing Wheels (NOT for Highway Towing)
WARRANTY	2 Year Engine



1100 LB GAS POWERED DUMP CART

ITEM NUMBER

OPD814

FEATURES

- Powered by a KOHLER® CH270 7 HP 4000 RPM Command Pro Commercial Engine
- Dual, front wheel drive, all-terrain tires to get around the job site easily **1**
- 90° dump bucket lifting mechanism for effortless dumping
- Locking brakes
- Simple hand controls **2**
- Large capacity bucket **3**
- Throttle bar speed control with articulated floating rear wheels keep your load level and steady

DESCRIPTION

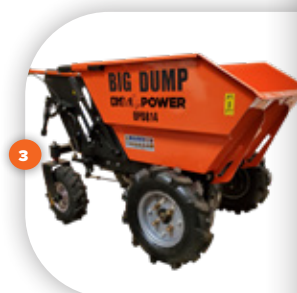
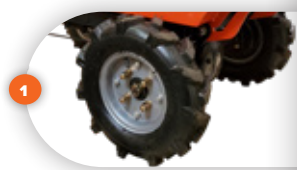
Introducing the first DK2 POWER gas powered dump cart powered by the KOHLER® CH270 7 HP 4000 RPM Command Pro Commercial Engine.

The OPD814 is equipped with a lifting mechanism to tip the dump bucket to 90° vertically for effortless unloading, and this unit has been designed with a throttle bar speed control and articulated floating all-terrain rear wheels to keep your load level and steady.

Moving around the job site has never been easier with the dual front wheel drive capability.

SPECIFICATION

ENGINE MODEL	KOHLER® CH270
ENGINE	7 HP 4000 RPM Command Pro Commercial
MAXIMUM CAPACITY	1,100 lb
DRIVE	Dual Front Wheel Drive
WHEELS	All Terrain
WARRANTY	3 Year Engine 1 Year Chassis



TAILGATE MOUNTED 5-BIKE CARRIER

ITEM NUMBER

BCR500

UPC

827518008256

DESCRIPTION

Introducing DK2's first Tailgate Bike Rack, the perfect solution for pickup bed bike transport. The BCR500 is designed to secure up to five bikes in the bed of your mid to full-size pickup truck without scratching or scuffing your vehicle.

Fabricated with a Velcro® cradle closure system to better accommodate lighter, stiffer carbon bike frames and painted surfaces. Outer material is crafted from weather resistant nylon, and the backing keeps your vehicle damage-free with extra soft felt material.

SPECIFICATION

CONSTRUCTION Black Weather Resistant Nylon / Extra Soft Felt

COMPATIBILITY Road Bikes, Mountain Bikes, Fat Tire Bikes, E-Bikes

MOUNT STYLE Tailgate Mounted

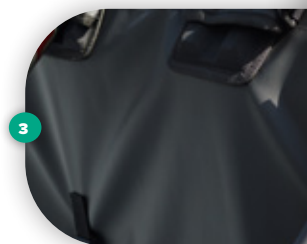
CRADLE CLOSURE Velcro® Frame Straps

CAPACITY 5 Bicycles

SHIPPING DIMENSIONS 53.3" x 5.3" x 17.3"
(135.38 cm x 13.47 cm x 43.94 cm)

SHIPPING WEIGHT 7.3 lb
(3.3 kg)

WARRANTY 1 Year Limited



FEATURES

- Extra soft felt inner material to protect vehicle **1**
- Mounts to the tailgate of mid to full-size pickup trucks (54" beds)
- Carries up to five bicycles
- Velcro® frame straps are easy to use and long lasting **2**
- Durable, weather resistant nylon outer material **3**
- Tailgate handle and rear-view camera access **4**
- 1 year limited warranty

HITCH-MOUNTED E-BIKE HAULER

ITEM NUMBER

BCR690E

UPC

827518008003

DESCRIPTION

Adventure knows no bounds with the DK2 BCR690E E-Bike Hauler. Built to conveniently load 2 bikes of any size, you and a friend or family member can ride off-road, in the city, or wherever your journey takes you.

Built with heavy duty powder coated steel and equipped with padded universal top clamps, this carrier holds your bikes safely and securely.

With effortless loading capabilities and a revolutionary pivot feature that gives you access to your tailgate or hatchback, your only concern will be where to go next.

SPECIFICATION

CONSTRUCTION Powder Coated Steel

COMPATIBILITY Most E-Bikes, Mountain Bikes, Road Bikes & Fat Tire Bikes

TIRE SIZE COMPATIBILITY 40.6 cm - 73.6 cm
15.9" - 28.9"

MAX TIRE WIDTH 12.1 cm
4.7"

FOLDED DIMENSIONS 157 cm (l) x 108 cm (w) x 42 cm (h)
61.8" (l) x 42.5" (w) x 16.5" (h)

UNFOLDED DIMENSIONS 157 cm (l) x 108 cm (w) x 110 cm (h)
61.8" (l) x 42.5" (w) x 43.3" (h)

WEIGHT 20 kg
44 lb

RACK WEIGHT CAPACITY 32.8 kg
72.3 lb

TOTAL WEIGHT CAPACITY 65.7 kg
144.8 lb

RECEIVER Fits on a 5 cm / 2" Receiver



FEATURES

- Heavy-duty powder coated steel construction
- Secure rubber strapped cradle for rear tires **1**
- Fits over a 2" hitch receiver
- Padded universal top clamp **2**
- Super compact folding capability for easy storage **3**
- Adjustable base to fit most size tires
- Effortless loading and unloading
- Safely hauls up to 2 bicycles, including e-bikes, mountain bikes, road bikes, and fat tire bikes
- Access your hatch or tailgate while the hauler is attached



4 x 6 OPEN RAIL GALVANIZED LANDSCAPE TRAILER

ITEM NUMBER

MMT4X6OG

FEATURES

- 1,295 lb load capacity
- Fully welded heavy duty galvanized steel frame
- Corrugated steel floor and open side rails
- Solid square tube cambered axle
- Drive-up rear ramp tailgate **1**
- 2 position dump bed axle mount with quick release lock pin
- 16" hitch height
- Heavy duty tail light protectors
- LED quick connect lighting with side markers
- 4.8-8 (C) wheels 12" diameter with 5 on 4-1/2" bolt pattern **2**
- 2 inch coupler best performs with a class III receiver **3**

DESCRIPTION

The "little brother" of the best-selling DK2 MMT5X7 is specially designed for handling a variety of hauling tasks. This trailer is the perfect solution for anyone needing to pull a trailer behind a small vehicle, full size truck, law tractor, or ATV. The trailers are engineered to provide exceptional balance and ease of mobility without giving up one ounce of payload capacity. Every trailer is made from 100% welded tubular steel with expanded steel decks. Our back gate design is multi-purpose and can sit flat in the bed, up in a vertical position, or lying down as a ramp for easy loading.

SPECIFICATION

PAYLOAD CAPACITY 1,295 lb

GVW 1,600 lb

CURB WEIGHT 305 lb

BED DIMENSIONS 48" x 72"

OVERALL LENGTH 152" (Tongue Extended)

FLOOR HEIGHT 18"

CONSTRUCTION Fully Welded Heavy Duty Tubular Galvanized Steel

SIDE RAILS Open Rails

FLOATING RAMP GATE 36" Reinforced Square Tube Steel Ramp with Heavy Duty Rounded Tube Exterior

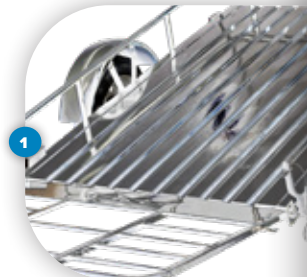
LIGHTING Pre-Wired, Quick Connect LED Lighting, Uses D.O.T. Standards

HITCH HEIGHT 14"

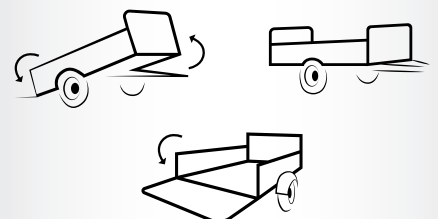
FLOORING 100% Welded, Corrugated Galvanized Steel Panel

SHIPPING DIMENSIONS 78" x 52" x 9"

SHIPPING WEIGHT 305 lb



**3-IN-1
UTILITY
TRAILER**



T1000 ELITE COMBAT WINCHES

ITEM NUMBER / UPC

T1000-100 / 827518007167
 T1000-100AE / 827518007174
 T1000-145 / 827518007181
 T1000-145AE / 827518007198
 T1000-220 / 827518007204
 T1000-220AE / 827518007211

DESCRIPTION

The T1000 Series Winches are built specifically for military use, able to withstand extreme climates and temperatures. Features include hardened 3 stage planetary gears for reliable and efficient use in the harshest environments. The waterproof remote control has thermometric LED indicators signals to monitor the temperature of the motor and high temp lithium grease is used which doesn't solidify in extreme climates. Coupled with corrosion & chemical resistant matte black powder coat & a stainless steel fairlead makes this a formidable winch able to withstand whatever is thrown at it.

SPECIFICATION

	T1000-100 & T1000-100AE	T1000-145 & T1000-145AE
RATED LINE PULL	10,000 lb	14,000 lb
MOTOR: 12V	6.2 hp	7.2 hp
GEARING	228:1	228:1
DRUM SIZE DIA X L	2.5" x 8.6"	2.5" x 8.6"
CABLE SIZE DIA X L	0.36" x 82 ft (AE) 0.36" x 82 ft (WR)	0.43" x 65.6 ft (AE) 0.43" x 75.5 ft (WR)
MOUNT PATTERN	10" x 4.5"	10" x 4.5"
DIMENSIONS	22.6" x 6.3" x 10.2"	22.6" x 6.3" x 10.2"
WEIGHT	61.7 lb (AE) 82.7 lb (WR)	82.6 lb (AE) 90 lb (WR)

	T1000-220 & T1000-220AE
RATED LINE PULL	22,000 lb
MOTOR: 12V	7.4 hp
GEARING	450:1
DRUM SIZE DIA X L	3.5" x 8.5"
CABLE SIZE DIA X L	0.55" x 65.6 ft (AE) 0.55" x 78.7 ft (WR)
MOUNT PATTERN	10" x 4.5"
DIMENSIONS	24.1" x 6.3" x 10.2"
WEIGHT	136.6 lb (AE) 165.3 lb (WR)



FEATURES

- IP68 rated military grade winch and control box
- Hardened 3 stage planetary gears
- Waterproof remote control with LED indicators
- Corrosion and chemical resistant powder coat
- High temperature lithium grease that won't solidify in extreme temperatures

INCLUDES

- Armortek winch rope (or steel rope available)
- Aluminum fairlead (or stainless steel fairlead for wire rope)
- Stainless steel mounting hardware
- Hook



**FORGE
YOUR
OWN
PATH.**





WINTER 2022

NEW PRODUCT CATALOG

DK2 CANADA

5330 Mainway
Burlington, Ontario
L7L 6A4, Canada

DK2 USA WEST

4301 S Valley View Blvd
Suite 10-11, Las Vegas
Nevada, 89103, United States

DK2 USA EAST

3750 South Avenue
North Unit, Toledo, Ohio
43615, United States

1 (888) 277-6960

info@detailk2.com

detailk2.com