



1/2 Ton Manual Lever Chain Hoist

OWNER'S MANUAL



WARNING:

Read carefully and understand all **ASSEMBLY AND OPERATION INSTRUCTIONS** before operating. Failure to follow the safety rules and other basic safety precautions may result in serious personal injury.

Item# STF-1010LH

Thank you very much for choosing this product! For future reference, please complete the owner's record below:

Model: STF-1010LH Purchase Date: _____

Save the receipt, warranty and these instructions. It is important that you read the entire manual to become familiar with this product before you begin using it.

This product is designed for certain applications only. The manufacturer cannot be responsible for issues arising from modification. We strongly recommend this product not be modified and/or used for any application other than that for which it was designed. If you have any questions relative to a particular application, DO NOT use the product until you have first contacted us to determine if it can or should be performed on the product.

For technical questions please call **1-218-943-6290**.

TECHNICAL SPECIFICATIONS

Item	Description
Lift Height	10ft
Capacity	1000lbs or ½ ton
Chain	.16" x 12
Head Room	12 in

GENERAL SAFETY RULES



WARNING: Read and understand all instructions. Failure to follow all instructions listed below may result in serious injury.



CAUTION: Do not allow persons to operate or assemble this manual lever hoist until they have read this manual and have developed a thorough understanding of how the manual lever hoist works.



WARNING: The warnings, cautions, and instructions discussed in this instruction manual cannot cover all possible conditions or situations that could occur. It must be understood by the operator that common sense and caution are factors which cannot be built into this product, but must be supplied by the operator.

SAVE THESE INSTRUCTIONS

WORK AREA

- **Keep work area clean**, free of clutter and well lit. Cluttered and dark work areas can cause accidents.
- **Keep children and bystanders** away while operating a **manual lever hoist**. Distractions can cause you to lose control, so visitors should remain at a safe distance from the work area.
- **Be alert of your surroundings**. Using a **manual lever hoist** in confined work areas may put you in a dangerous situation.

PERSONAL SAFETY

- **Stay alert**, watch what you are doing and use common sense when using a **manual lever hoist** . Do not use a **manual lever hoist** while you are tired or under the influence of drugs, alcohol or medication. A moment of inattention while operating a **manual lever hoist** may result in serious personal injury.
- **Dress properly**. Do not wear loose clothing, dangling objects, or jewelry. Keep your hair, clothing and gloves away from moving parts. Loose clothes, jewelry or long hair can be caught in moving parts.
- **Use safety apparel and equipment**. Use approved safety goggles or safety glasses and equipment when needed. This applies to all persons in the work area.

MANUAL LEVER HOIST USE AND CARE

- **Do not modify the manual lever hoist in any way**. Unauthorized modification may impair the function and/or safety and could affect the life of the equipment. There are specific applications for which the **manual lever hoist** was designed.
- **Always check for damaged or worn out parts before using the manual lever hoist**. Broken parts will affect the **manual lever hoist** operation. Replace or repair damaged or worn parts immediately.
- **Do not exceed the manual lever hoist load capacity**.
- **Distribute the load evenly**. Uneven loads may cause the load to tip, resulting in personal injury to the operator or others.
- **Use the manual lever hoist on flat and level surfaces** capable of supporting the **manual lever hoist** and its maximum load. Pulling or pushing a load on a slanted or uneven surface can result in loss of control.
- **Store manual lever hoist**. When **manual lever hoist** is not in use, store it in a secure place out of the reach of children. Inspect it for good working condition prior to storage and before re-use.
- **NEVER walk or stand under a raised load**.

OPERATION AND INSTALLATION:



WARNING: Read and understand the safety precautions in this manual.



WARNING: NEVER OVERLOAD. Make sure the operator is familiar with the hoist controls before using the manual lever hoist.



WARNING: DO NOT LIFT PEOPLE or PETS.



WARNING: NEVER stand or walk under a raised load.

- When operating the manual lever hoist, maintain a firm footing and secure if necessary.
- NEVER use the manual lever hoist with kinked, twisted, or damaged chains or hooks. Repair before each use.
- NEVER lift more than the rated capacity.
- ALWAYS lift the load slowly.
- NEVER leave a suspended load unattended.

INSTALLATION:

- Estimate the load that is to be lifted or moved and make sure it does not exceed the capacity.
- Make sure that the support to which the upper hook is attached is strong enough to hold several times the weight of the load. Be sure the hoist is solidly held in the uppermost part of the upper hook, the latch is closed and the latch does not contact the support.
- Make sure that the hoist is rigged so that the upper and lower hooks will form a straight line when the hoist is being operated and the frame is free to swivel and will not come in contact with any object.

HOISTING AND LOWERING:

- Hoisting (pulling): Set the selector lever to the Left position for “UP”. Hoist the slacked load chain by turning the handle clockwise.
- Lowering (Releasing): Set the selector lever to the Right position for “DOWN”. Lower the load by turning the handle counterclockwise.

FREE CHAINING: This position is for making quick adjustments of the load chain length.

- Set the selector lever to the middle position and pull the load chain out in the desired direction.
- Free chaining will not be possible during the following conditions:
 - When the handle is in contact with something and not rotating freely.
 - When the lever hoist is under a load.
 - When the brake has locked from a large or abrupt load turn the handle 45 degrees counterclockwise to unlock the brake.

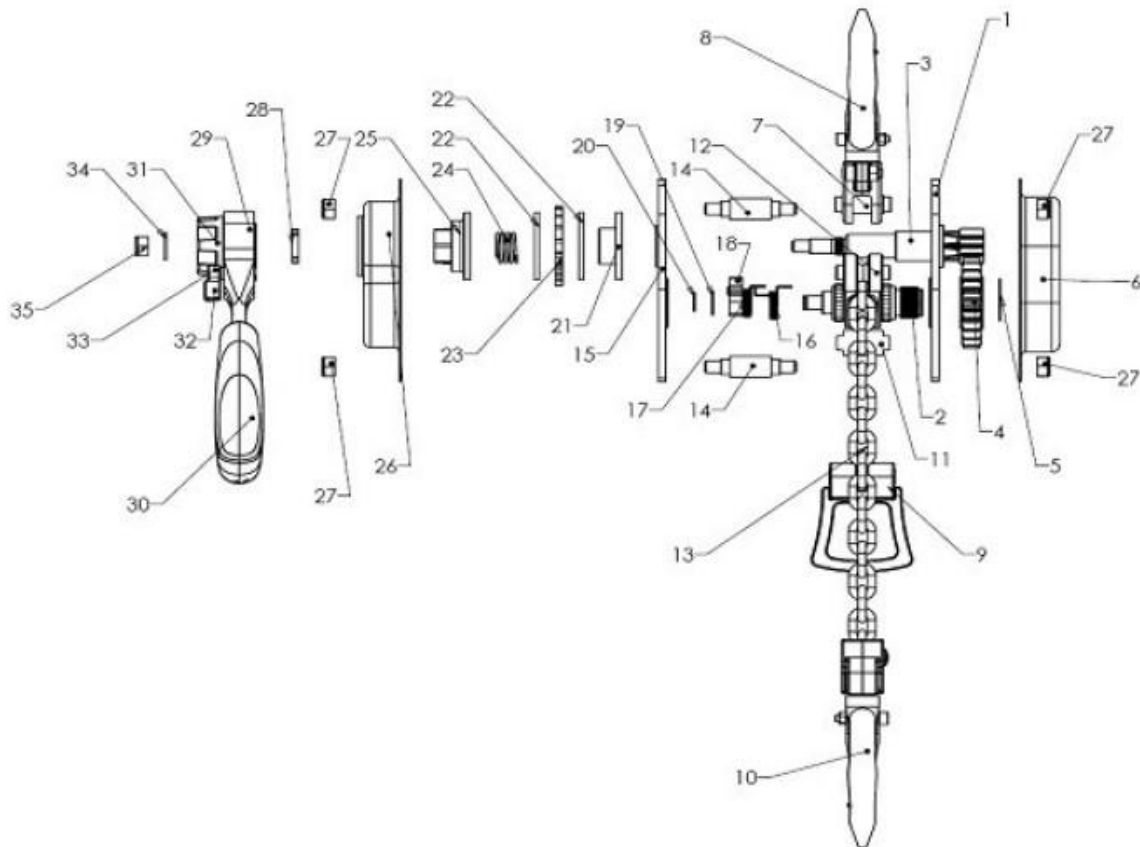


WARNING: Pull the chain slowly and be careful: Handle May Spin under free chaining position and may cause loss of load

MAINTENANCE

- **Maintain your manual lever hoist.** It is recommended that the general condition of any **manual lever hoist** be examined before it is used. Keep your **manual lever hoist** in good repair by adopting a program of conscientious repair and maintenance. Have necessary repairs made by qualified service personnel.
- Keep all moving parts well lubricated.

DIAGRAM & PARTS LIST



No	Description	Qty	No	Description	Qty	No	Description	Qty
1	Gear Plate Assembly	1	15	Brake Plate Assembly	1	29	Handle	1
2	Gear Cover	1	16	Pawl Spring	1	30	Handle Grip	1
3	Long Axis	1	17	Pawl Spring	1	31	Handwheel	1
4	Splined Hole Wheel	1	18	Pawl	2	32	Selector Lever	1
5	Jump Ring	1	19	Pawl Shaft Washer	1	33	Spring Pin	1
6	Brake Cover and Name Plate	1	20	Spring	1	34	Handwheel Washer	1
7	Upper Hook Pin	1	21	Friction Hub	1	35	M8 Lock Nut	1
8	Upper Hook Assembly	1	22	Brake Disc	2			
9	Loose End Ring	1	23	Ratchet	1			
10	Lower Hook Assembly	1	24	Friction Hub Spring	1			
11	Stripper	1	25	Brake Nut	1			
12	Chain Guider Roller	2	26	Brake Cover	1			
13	Load Chain	1	27	M6 Lock Nut	6			
14	Side Plate Studs	3	28	Cam	1			

For replacement parts and technical questions, please call **1-218-943-6290**.

WARRANTY

One-year limited parts warranty



BAC
PO BOX 155
Miltona, MN 56354

MADE IN CHINA