

SPORTS AFIELD®

Established 1887

PORTABLE SECURITY VAULT | INSTRUCTION MANUAL



H O M E D E F E N S E

IMPORTANT:

Please read this information and follow all safety rules carefully before operating your vault. Failure to do so will void your warranty.

TABLE OF CONTENTS

IMPORTANT INFORMATION	2
1 REGISTRATION	3
2 UNDERSTANDING YOUR VAULT	4
3 OPENING YOUR VAULT.....	5
4 SECURING YOUR VAULT	6
5 LOCKED OUT OF YOUR VAULT	7
6 KEEPING YOUR VAULT DRY	7
7 MAINTAINING HINGES AND INTERNAL MECHANISMS	7
THREE YEAR WARRANTY	8

DISCLAIMER - READ BEFORE VAULT SETUP

PLEASE READ THIS INFORMATION CAREFULLY BEFORE OPERATING YOUR SPORTS AFIELD VAULT.

DO NOT LOCK THIS MANUAL OR THE BACKUP KEYS IN YOUR VAULT.

- Thank you for choosing a Sports Afield portable security vault to protect your valuables. We are committed to securing, organizing and protecting your most important documents, valuables and keepsakes.
- If you experience problems or challenges with your vault, please contact us. Many issues can be quickly resolved without the product being returned.

Contact Customer Service at cs@saproducts.com or (888) 792-4264

SAFETY

- Be sure to keep backup keys stored in a safe place away from unauthorized users.

WEAPON STORAGE

- If you choose to utilize this vault to store a firearm always follow proper firearm and local laws when storing a firearm.
- SA Consumer Products strongly recommends that you do not store loaded firearms.
- Always follow the firearm safety rules set out by the firearm's manufacturer.
- A Sports Afield portable security vault or any other firearm storage device cannot take the place of other safety procedures including advising children of the dangers of firearms.
- SA Consumer Products and its distributors of Sports Afield security vaults do not recommend, suggest, advise, promote, or otherwise condone the ownership or use of firearms. We believe the decision to own or use a firearm is a serious decision that should only be made by an adult who has carefully considered the risks and benefits of such a decision.

1. REGISTRATION

Register your vault at www.saproducts.com

By registering your Sports Afield security vault we will be able to expedite and address any problems or challenges you may have which would otherwise require a notary letter and proof of payment.

REGISTRATION INFORMATION

The information you record onto this page will be required in the event you cannot access the contents of your Sports Afield security vault. Please fill out all the required information below and retain for your records and safe keeping.

PLEASE HAVE THIS INFORMATION READY FOR TECHNICAL ASSISTANCE:

Contact Customer Service at cs@saproducts.com or (888) 792-4264

PURCHASE DATE:

PURCHASE PRICE (BEFORE TAX):

MODEL NUMBER:

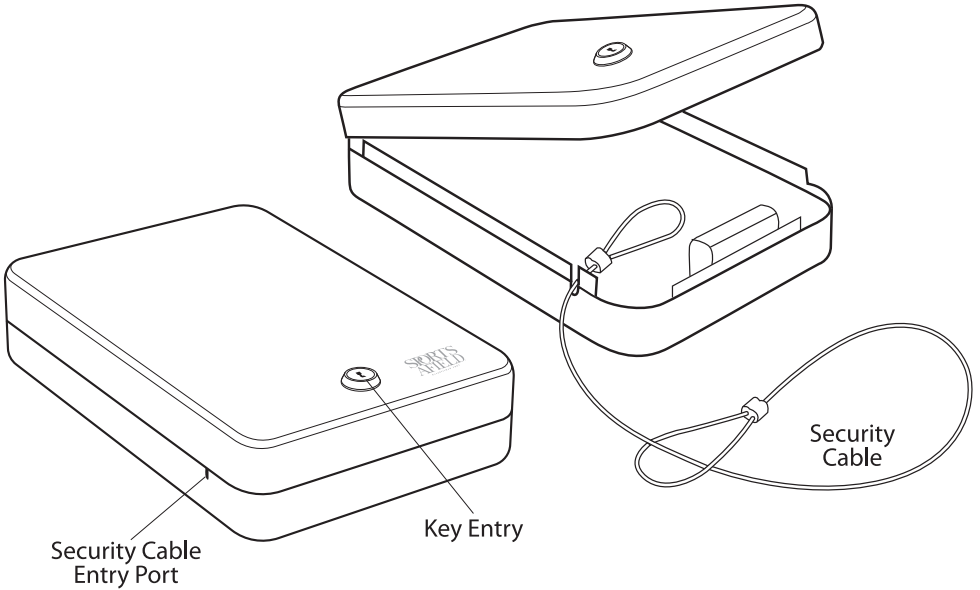
SERIAL NUMBER:

RETAILER NAME:

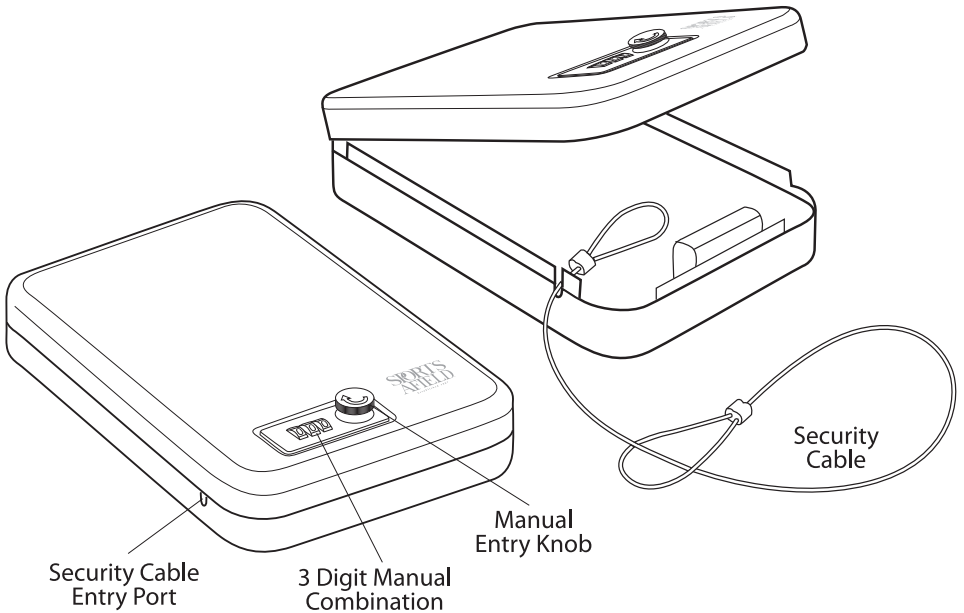
KEY NUMBER (IF APPLICABLE):

2. UNDERSTANDING YOUR VAULT

SA-CV2-K and SA-CV3-K (Key Entry)

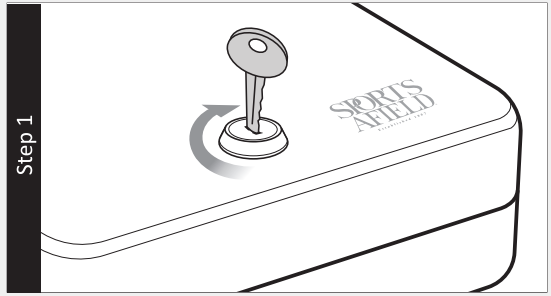


SA-CV1, SA-CV2-C and SA-CV3-C (Combination Entry)



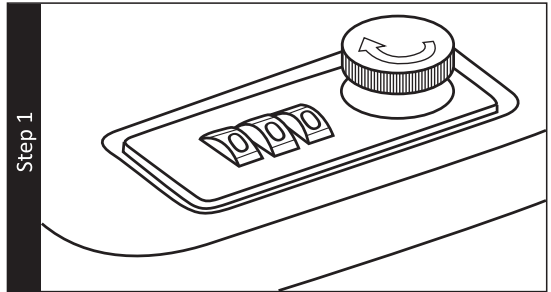
3. OPENING YOUR VAULT

1. If your vault has a **key entry**, simply insert your key and turn it clockwise to open.



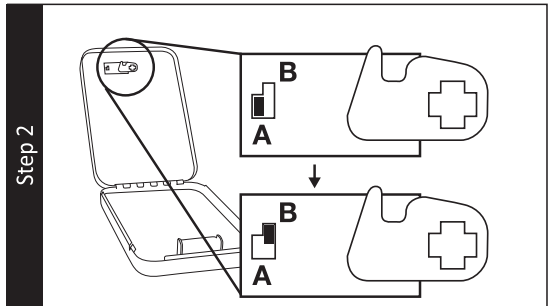
Step 1

1. If your vault has a **combo lock**, the first step to opening your vault is setting a new combination. Set the combination to the factory pre-set code of 0-0-0 and turn the knob clockwise to open.



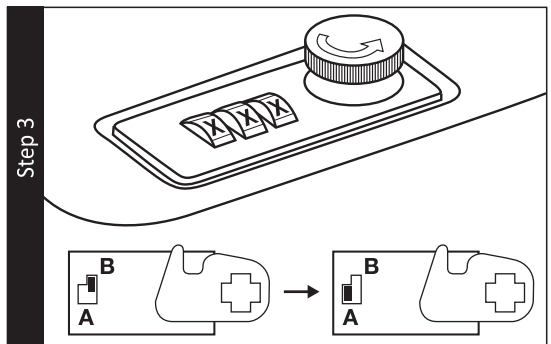
Step 1

2. On the inside of the lock face, move the lever from the "A" to the "B" position. Your case is now ready to be programmed with a new, personal code.



Step 2

3. Set the combination to your new 3 digit combination. Once entered, while your vault is still open, turn the knob counter-clockwise to lock. Finally, return the lever on the inside of the lock face from "B" to "A". Your new combination is now set.



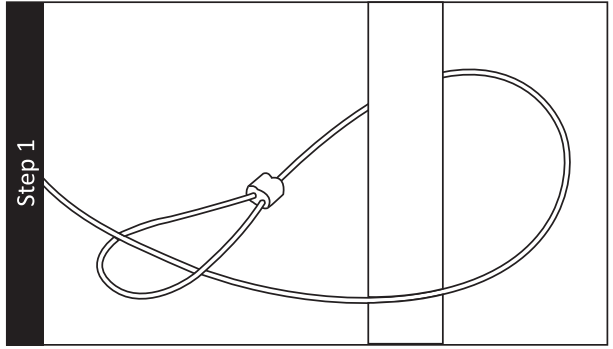
Step 3

Note: It is necessary to re-program your vault with a new security code you have personally selected to provide maximum household security.

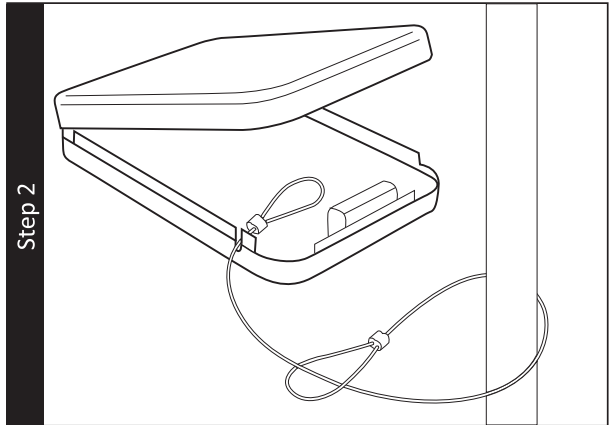
4. SECURING YOUR VAULT

WARNING: SA Consumer Products recommends that you store your vault in a closet, office, basement, bedroom, or any other location that is convenient for you but out of the direct line of sight from prying eyes.

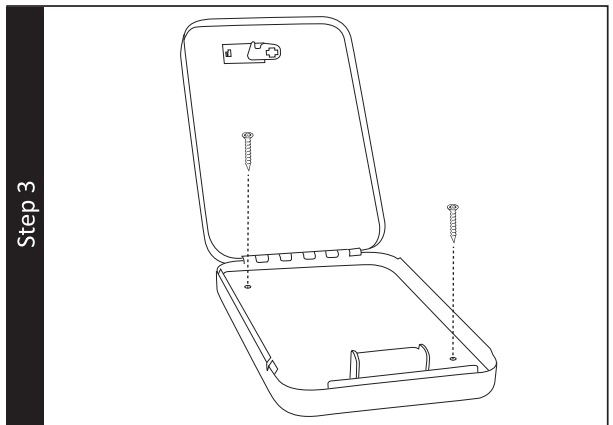
1. A security cable is included with your vault. To secure the cable around a fixed object, first loop the cable around the object. Next, thread one of the loops at the end of the cable through the second loop as shown in the figure to the right.



2. Place the cable's free loop into the notch on the side of the case while still opened. Locking the case with the cable loop inside will secure the cable inside the case. Check the loop to ensure there is no way it can be manipulated to be easily removed from the fixed object, locking it down.



3. Two mounting holes are also located on the bottom of your vault for permanent mounting. If you wish to mount for an extra layer of protection, consult your hardware retailer for fastening hardware for your particular mounting surface.



5. LOCKED OUT OF YOUR VAULT

In the event you have forgotten the vault's combination your primary action will be to use your backup keys in order to gain access to your vault.

If you have lost your backup keys, you will need to contact customer service at the number below. Proof of purchase is required to obtain keys.

Contact Customer Service at cs@saproducts.com or (888) 792-4264

6. KEEPING YOUR VAULT DRY

We recommend placing a moisture/protective barrier between your vault and the concrete floor to prevent buildup of moisture, mildew, or rust that will damage the vault. Installing your vault in a place with climate control (heat in the winter and cooling in the summer) is highly recommended. In areas of high humidity or frequent temperature fluctuations (garages) it is recommended to take appropriate precautions to ward against moisture damage. We strongly encourage the use of internal desiccants to protect your contents from rust or mildew.

7. MAINTAINING HINGES AND INTERNAL MECHANISMS

The hinges and internal locking mechanism are permanently lubricated, thus needing no maintenance.

THREE YEAR WARRANTY

SA Consumer Products will repair or replace, at their sole discretion, any Sports Afield vault damaged by fire, forced entry, forced attack or natural flood for the lifetime of the original owner.

SA Consumer Products will repair or replace, at their sole discretion, any Sports Afield vault with defective parts, paint or lock for three years of the original owner purchase date.

If SA Consumer Products deems a replacement vault is to be sent, they will pay the freight costs to ship the replacement vault to the original owner.

This three year warranty is limited to the vault and expressly excludes any loss associated with the contents of the vault.

SA Consumer Products reserves the right to receive full evidence of your misfortune, such as a police report and/or homeowner's statement of coverage. This warranty is not valid outside of the United States and Canada.

Proof of registration and copy of sales receipt must be on file at the time of claim. Visit our website at www.saproducts.com to register your vault.

Three year warranty only applies to the original owner of the vault.

SA Consumer Products shall only be responsible and liable when the vault is used in compliance with the directions specified in your new SA Consumer Products owner's manual.

SA Consumer Products requires that specific guidelines be followed for repair. The vault will be repaired in-home if possible (to include parts and labor); however, if factory replacement is necessary (at SA Consumer Products' sole discretion), the replacement will be shipped freight prepaid, curbside delivery.

This warranty is inclusive and is in lieu of any and all other warranties, express or implied. Specifically excluded are the warranties of merchantability and fitness for a particular purpose. This warranty is limited to the vault itself and/or its value and does not include consequential damages of any kind including, but not limited to, the contents in and of the vault.