



Part #: 114628

Center Height: 82 inches

Foot Print: 96" x 168"

Hub-to-Hub: 100 x 170 inches

Weight: 50 lbs

Instruction #: 106339



Cabin Screen Tent

WARRANTY INFORMATION

Please contact customer service directly at the E-mail or phone number listed below for any quality issues. **ONCE USED THIS PRODUCT CANNOT BE RETURNED TO STORE.**



**** Warranty cannot be honored without an original, dated receipt. ****

Customer Service Hours: Monday – Friday 9am – 4pm Central Standard Time

Phone: 763-231-4120

Email: CustomerService@ClamCorp.com

IMPORTANT! Please read: This product is warranted to the original retail purchaser (not transferable) to be free from manufacturer's defects for one (1) year from the date of the original purchase. Warranty does not cover screen tears, tent tears, or broken or bent poles due to high wind, weather conditions or unattended use. The part will be replaced or repaired (manufacturer's option) if found defective within the one (1) year time frame. Warranty will be void if product has been subject to neglect, misuse, improper installation, misapplication, alteration, or accident including, but not limited to, improper maintenance or use of unauthorized parts or attachments. Please read this entire owner's manual to ensure proper installation, use, storage and care for your Clam shelter.

To submit a warranty request, please use one of the following methods:

- **Preferred Method** - Visit www.QuickSetShelters.com under the "Customer Support" tab fill out the warranty form.
- Email: CustomerService@ClamCorp.com
- Write: Clam Outdoors - Warranty Department
12135 Brockton Lane N.
Rogers, MN 55369

Information needed to submit a warranty claim: Please include your full name, address, phone number, a copy of your receipt, a brief description of the problem, and pictures to clearly show the area(s) of concern. Clam's warranty department will review your request and a Clam representative will contact you regarding your claim status. If instructed by the warranty department, all returns must be returned with postage prepaid.

LIMITATION OF LIABILITY

It is expressly understood that Clam Corporation's liability for its products, whether due to breach of warranty, negligence, strict liability, or otherwise, is limited to the repair of the product as stated above. Clam Corporation is not liable for any injury, loss, damage, or expense, whether direct or consequential, including but not limited to loss of use, income, profit, or damage to material arising in connection with the sale, installation, use of, inability to use, or the repair or replacement of Clam Corporation products. Clam Corporation reserves the right to make alterations or modifications in its products at any time, which in its opinion, may improve the performance and efficiency of the product. Clam shall not be obligated to make such alterations or modifications to products already in service.

SAFETY INSTRUCTIONS

Please fully understand and follow all safety instructions outlined in this booklet. Failure to do so could result in severe injury.

- Do not use open flame heaters in your screen tent.
- Tent fabric will melt when contact is made with hot surfaces (i.e., heaters).
- Use all external anchors during excessive wind conditions(15+mph)

WARNING

WARNING: KEEP ALL FLAME AND HEAT SOURCES AWAY FROM THIS TENT FABRIC

MISE EN GARDE: TENIR LE TISSU DE CETTE TENTE LOIN DE TOUTE FLAMME ET DE TOUTE SOURCE DE CHALEUR

This tent meets the flammability requirements of CPAI-84. This tent is made of flame-resistant fabric. It is not fireproof. The fabric will burn if left in continuous contact with a flame source.

Cette tente répond aux exigences d'inflammabilité du CPAI-84. Cette tente est fabriquée d'un tissu résistant au feu, mais qui n'est pas inflammable. Ce tissu brûlera s'il est laissé en contact continu avec une source d'inflammation.

PARTS LIST

Item #	Qty.	Part #	Description
1	7	105153	Hub & Pole Kit
2	1	106357	Removable Floor
3	2	104815	Door Support Pole
4	1	104671	Carry Bag
5	5	104173	Stake, Screen Hub
6	5	106340	External anchor strap, Quickset
7	1	106339	Instructions/Owner's Manual

BEFORE ATTEMPTING TO USE THIS

PRODUCT: Go to

www.QuickSetShelters.com, click on your shelter model and watch the set up video provided. Then practice setting up and taking down at home. Repeat several times until comfortable.

Replacement parts can be ordered on-line at www.QuickSetShelters.com.

SET UP INSTRUCTIONS

IMPORTANT: When you first open your shelter, you will see the poles on the OUTSIDE of the shelter. Once set up, the poles should be on the INSIDE of the tent. Your screen tent is folded in half for storage. Only pull outward on the hub pull (loops) on the exterior of the tent. **IMPORTANT:** When setting up your shelter, poles should be on the INSIDE of the tent. Only pull outward on the hub pull (loops) on the exterior of the tent. No tools are needed for the setup of your screen tent.



Please follow the directions carefully for proper set up and take down.

SET UP INSTRUCTIONS CONTINUED

Step 1: Unzip the storage bag completely and remove the shelter. Use care not to misplace the instructions and the stake pouch. It is advised to store your stakes and pouch in the carry bag until they are needed.

Step 2: Pick the tent up directly from the carry bag and lay it on the ground. (Photo 2)

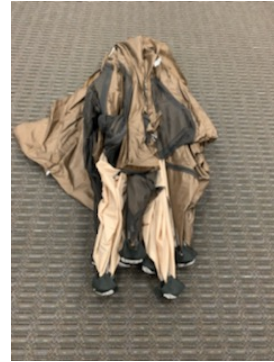


Photo 2

Step 3: With the screen tent lying down, grab a corner of the tent on the opposite end from neoprene hub covers that say "Quickset" and pull it back over the tent towards the neoprene hub covers. This will expose one or two of the outer walls and the webbed strap loop on the hub assembly in the center of the side wall panel. (Photo 3 and 4)



Photo 3



Photo 4

Step 4: With the poles on the inside, reach for the webbed strap loop at the center of one wall and pull until the section pops out. Hold the roof line with the opposite hand. (Photos 5 and 6)



Photo 5



Photo 6

Step 5: Continue around the shelter repeating the previous step until all wall panels are erect. This is a 6 sided shelter. So there will be 5 walls that need to be "popped" open. The last wall is the door wall which doesn't have a hub or poles on it. Once all the walls are deployed, simply walk inside and push up on the two roof hubs so they are popped up. (Photos 7 and 8)



Photo 7

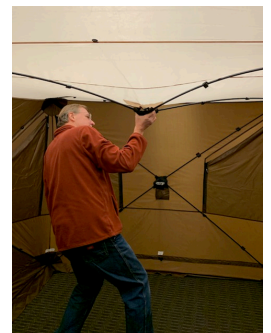


Photo 8

SET UP INSTRUCTIONS CONTINUED

Step 6 (optional): Insert the vertical rods on either side of the screen tent's door. Remove the Velcro retaining loop securing the pole to the adjacent wall. Once freed, install one end of the rod into the other's end to make it one long rod. Place the bottom of the rod in the pocket located at the bottom of the panel directly below where the rods are mounted. Secure the rod with the Velcro loop. Repeat on the other side. It is recommended to use these if any wind is present. (Photos 9 and 10)



Photo 9

Step 7: Install securing stakes on the tent. The stakes are designed to be used with the built in external anchor straps found in the pockets under each wall's hub assembly. If there is little to no wind, only a couple stakes should suffice. In windier conditions, a person should stake the entire shelter down by pushing an anchor into the ground roughly 3 feet from the outside wall, attaching the loop end of the strap around it, and cinching the strap snug between the eye bolt on the hub and the stake, itself. (Anchor straps are shown in photos 11 and 12)



Photo 10

Using the built in Wind Panels:

Step 1: Locate the tie strings mounted on each end of the wind panels. Untie and let the panel fall down.



Photo 11

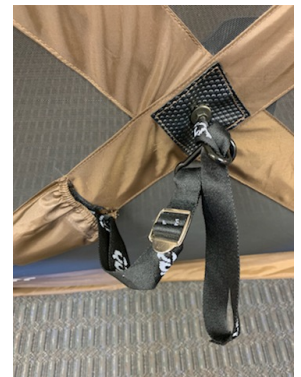


Photo 12

Step 2: Locate the hub strap on the center of the wall and pull it through the grommet on the wind panel.



Photo 13



Photo 14

Step 3: Zip down the zippers located on each side of the wind panels. Finish with securing the Velcro tabs on the outside of the zipper.

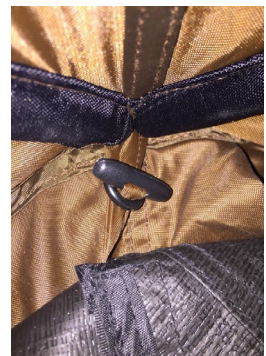
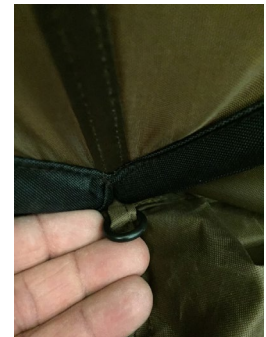
Step 4: To store the wind panels, simply detach the Velcro tabs and unzip the wind panels. Roll the panel back up and tie with tie strings. (Photos 13 and 14)

Installing the floor on your Quickset Cabin

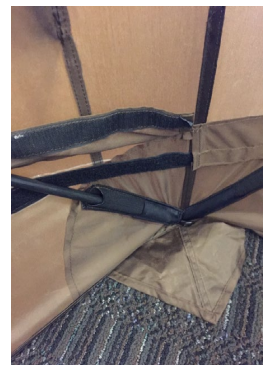
1. Attach the Velcro on each corner (6x) so that the toggle T is on the outside bottom of the floor assembly. This needs to be done in each corner to form a "tray" that will prevent water or mud from coming into your tent.



2. Once the floor "tray" is assembled, locate one of the hoops sewn into the bottom corners (doesn't matter which one you start with) and install the toggle T through the hoop to hold its position.
NOTE: WHILE THERE ARE TOGGLE T'S AND HOOPS IN EVERY CORNER, IT'S NOT NECESSARY TO CONNECT THEM ALL FOR POSITIONING. ONE OR TWO WILL SUFFICE



3. Next, separate the protective cover from the Velcro strip that runs around the entire perimeter of the inside of the screen tent and tuck the ends of each strip up behind the hub poles to keep them out of the way.



4. Attach the Velcro from the backside top of the floor to the strip on the inside of the tent and work your way around the perimeter of the screen tent. Once it's all secured, your installation is complete.



NOTE: WHILE IT IS POSSIBLE TO LEAVE YOUR FLOOR CONNECTED TO THE SCREEN TENT WHILE YOU COLLAPSE IT FOR TRANSPORT, IT SHOULD BE REMOVED TO PREVENT ANY UNNECESSARY DAMAGE FROM THE HUB ASSEMBLIES

Installing the Privacy Divider on your Quickset Cabin

1. Locate the divider found in the carry bag and take it out. Find the top of the panel- the top is the side that the zipper does not go all the way to the end.



2. Install the barrel located on the divider panel through the loop on the inside of the tent at the midpoint. Once you have one installed, continue around the divider panel until all 7 barrels are installed into the corresponding hoops. Access and privacy are attained by simply zipping the panel open or closed.



Note: The privacy divider should always be removed when taking down your shelter after use. Due to the way the panels collapse and fold for storage, damage could occur to the panel or tent if it's left in.



TAKE DOWN INSTRUCTIONS

Step 1: Remove all the stakes from around the exterior of the tent and tuck the external anchors back in the pockets on the side panels. Place the stakes back in the pouch and put that back in the carry bag.

Step 2: If used, remove the vertical door support rods from pockets at the bottom of the panel, pull apart, and refasten them with the Velcro straps located diagonally on the panels next to each side of the door.

Step 3: From the inside of the tent, pull down the two roof hubs holding the roof up. Or push down from the outside of the tent if you can reach them.

Step 4: Push in the side wall panels from the outside of the screen tent until all the hubs are collapsed.

Step 5: Once the shelter is completely collapsed grab one corner of the tent and fold it in half on itself. Once in half, you can now condense the shelter to fit into the carry bag.

Step 6: Carefully lift and insert into the carry bag. Pay close attention not to twist or distort the hubs or fabric while inserting into bag. Fold the floor and divider panel, if necessary, and place those into the carry bag too.

SAFETY INFORMATION

Please fully understand and follow all safety instructions as outlined. Failure to do so could result in severe injury or death.

Do NOT use open flame heaters in your screen tent. Injury or death may result from fire if tent fabric is exposed to open flame. The tent is not fireproof, but the fabric is treated with a fire retardant that meets CPAI-84 specifications. Application of any foreign substance may render the flame retardant properties ineffective. Fabric will melt when contact is made with hot surfaces (i.e., heaters, propane stoves, etc.)

WARNING

Injury or death may result from fire if tent fabric is exposed to open flame.

Tent fabric is not fireproof. Fabric will burn with extended exposure to open flame. Do not use open flame products inside tent. Tent fabric is treated with fire retardant. Application of any foreign substance may render the flame retardant properties ineffective.

Night time: exterior reflectors must be visible to reduce risk of collisions.

This tent is made with flame resistant fabric which meets CPAI-84 specifications.

**For replacement parts, frequently asked questions, shelter information, videos, and all of your ice fishing or screen tent needs visit our web site at www.QuickSetShelters.com.*