



PLEASE READ THIS MANUAL THOROUGHLY

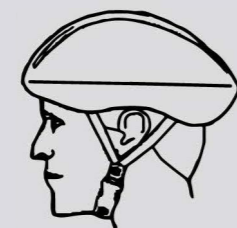
INSTRUCTIONS

In this manual, you'll be given instructions on safe operation and safe product usage that all riders need to follow.

CARE FOR LIFE

Always wear a properly fitted helmet and safety gear while riding.

Correct Fitting:



Make sure your helmet is properly secured and strapped at all times while riding.

Incorrect Fitting:



Ensure your forehead is not exposed and vulnerable to injury.

CAUTION

In this manual the word CAUTION indicates a potentially dangerous situation, and if not avoided could cause potential injury.

WARNING

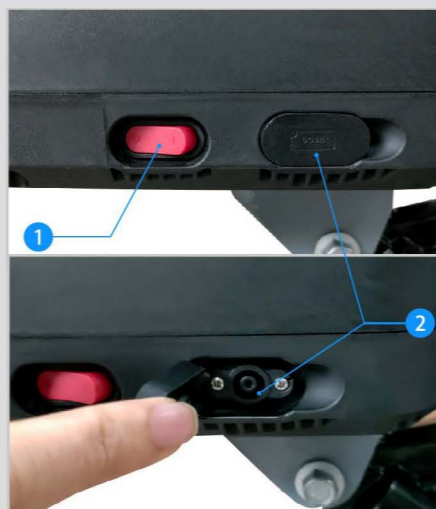
In this manual the word WARNING indicates a potentially dangerous situation, and if not avoided could cause serious injury or death.

STORAGE NOTE

Avoid prolonged exposure to sunlight or rain. When not in use, store in doors.

INTRODUCTION

This manual is designed to give you the information needed for proper and safe use. For beginners, please ride on open areas without obstacles. Please read this manual thoroughly before riding your bike.



Before starting the electric bike, Please make sure the battery power is on.

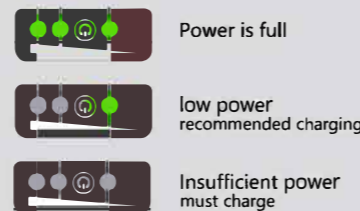
1 Please turn the red power switch to "I" before use;

After use, please pull back to "O" and turn off the power in time.

2 Charging Port

- Please turn on the red power switch before charging.
- Open the protective cover for charging.
- After charging, close the protective cover.

3 Press the battery button to check the remaining power.



Power is full

low power recommended charging

Insufficient power must charge



4 Press the button for 2s to start or stop the electric bike.

5 Press the button to upshift (1~5 gear).

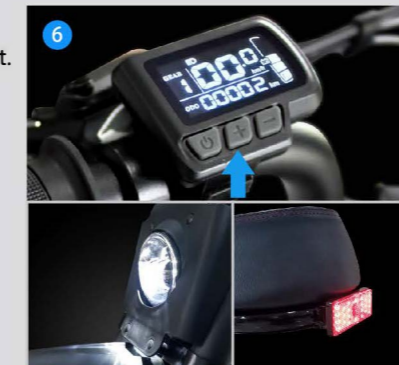
Press the button to downshift (5~1 gear).

INTRODUCTION

6 Please turn on the lights while riding at night.

○ Press the button for 2s to turn on the headlights and rear brake tail lights.

○ Press the button for 2s again to turn off the headlights and rear brake tail lights.



Mechanical Gear Shift

7 The lowest gear is gear 7. Turn the gear shift dial to the desired gears while riding.

8 You can also utilize the gear shift button to change gears.

Throttle

9 Turn the throttle towards you while riding to accelerate the bike.



Hydraulic Lockout

10 Used to turn on and off the front shock function.

WARNING!

- Please do not ride this bike in poor visibility, do not use for doing stunts or jumps and do not carry passengers.
- Use only the supplied charger with this device.
- Use only the supplied battery pack with this electric bike(48V, 10Ah).
- Please do not disassemble or refit the vehicle at will.
- Rider should be at least 15 years old.
- The maximum speed shall not exceed 25mph



It is forbidden to refit at will



Please repair in a professional repair shop

E-14A00 Electric bike Spec

Mode	E-14A00	Remarks
Weight Capacity	220lb	
Maximum speed	25mph	Adjustable 5th Gear
Motor power	48V750W	Peak Power
Battery range	132-154mi	Economic Speed
Seat Height	33.9in	Low to High
Battery	48V10AH	Optional 14.5ah
Wheelbase	46.8in	
Charger	Lithium battery charger 54.6V2A	
Size	70x26x42in	
Net Weight	77lb	
Front wheel	20x4.0 Pneumatic tire	
Rear wheel	20x4.0 Pneumatic tire	
Headlights	12VLED	
Taillight	12V brake light	
Drive mode	1. Cycling mode 2. Battery assist mode (1~5 gear) 3. EV drive mode (1~5 gear)	
Cushion	Sponge foam cushion	

NOTES

Driving

- Please wear bright, reflective clothing when riding at dusk.
- Please do not perform stunts or jumps or carry passengers.

Battery

- Please do not operate while battery is charging.
- If the device will not be used for a long period of time, be sure to fully charge the battery at least once a month for proper maintenance.
- For best results deplete the battery fully prior to charging.

Please Stop Use Under These Conditions

- Any damage occurs to the bike.
- The battery releases abnormal odor or heat.

Proper Storage

- Keep the battery out of reach of children and pets. Misuse can lead to serious injury or death.



E-14 Electric bike Urban runner

MANUAL