

INSTALLATION MANUAL

51189

Level of Difficulty

Easy

Installation difficulty levels are based on time and effort involved and may vary depending on the installer level of expertise, condition of the vehicle and proper tools and equipment.

Parts List

Qty	Description
1	Echo® manual override button
1	Reusable adhesive sticker

Tools Required

None

Maintenance

This button uses a CR2032 coin cell battery. Periodic inspection should be performed to ensure there is no visible damage.

NOTICE This device complies with part 15 of the FCC Rules. Operation is subject to the following two conditions: (1) This device may not cause harmful interference, and (2) this device must accept any interference received, including interference that may cause undesired operation.

This device contains license-exempt transmitter(s) / receiver(s) that comply with Innovation, Science and Economic Development Canada's license-exempt RSS(s). Operation is subject to the following two conditions:

1. This device may not cause interference.
2. This device must accept any interference, including interference that may cause undesired operation of the device.

REMARQUE Cet appareil est conforme à la partie 15 des règles de la FCC. Le fonctionnement de l'appareil est autorisé aux deux conditions suivantes : (1) cet appareil ne peut causer d'interférences nuisibles; et (2) il doit accepter toute interférence reçue, notamment celles pouvant entraîner un fonctionnement indésirable.

L'émetteur ou le récepteur exempté de licence contenu dans le présent appareil est conforme aux Cahiers des charges sur les normes radioélectriques d'Innovation, Sciences et Développement économique Canada applicables aux appareils radio exemptés de licence. Le fonctionnement de l'appareil est autorisé aux deux conditions suivantes.

1. Cet appareil ne peut causer d'interférences nuisibles.
2. Il doit accepter toute interférence reçue, notamment celles pouvant entraîner un fonctionnement indésirable.

⚠ WARNING

This device contains a battery composed of lithium, organic solvents and other combustible materials. Improper handling of the battery could lead to distortion, leakage, overheating, explosion or fire, causing personal injury.

Never swallow, charge, heat, expose to open flames, moisture or liquid.

Never attempt to disassemble, reverse the polarity or short circuit.

Product Photo



Echo® Mobile Brake Controller (not included)



⚠ CAUTION

When disposing of used batteries, remove the batteries in advance. If not possible, dispose entire product in a waste bin specific for electronics, as per the WEEE directive.

Follow any national or local regulations for battery disposal that apply to your area.

This button is not a toy. It contains small parts and accessories that present a choking hazard. Keep away from children or pets.

Do not attempt to service this product.

NOTICE

Before you begin installation, read all instructions thoroughly.

All steps must be followed to ensure the product will function properly. Once installed, test for proper function by using a test light or connecting a properly wired trailer.

Battery life will be shortened with heavy usage and / or use in extreme conditions.

Do not use product in temperatures below -4°F (-20°C) or above 129.2°F (54°C).

This button is rated as splash-proof only. Do not submerge or attempt to use under water as this will result in irreversible damage that is outside our warranty coverage.

Clean with a damp cloth and do not use chemical or abrasive cleaning products.

Product Registration and Warranty

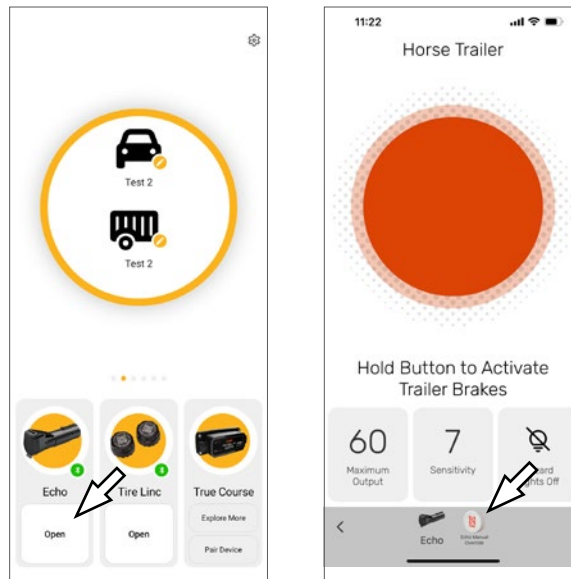
CURT stands behind our products with industry-leading warranties. To get copies of the product warranties, register your purchase or provide feedback, visit: warranty.curtgroup.com/surveys

Step 1

Follow the instructions included with your Echo® mobile brake controller on how to install the unit and pair it to the app.

Once the Echo® mobile brake controller is paired to your device, select open button.

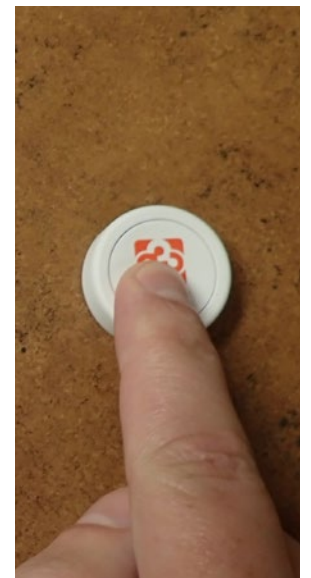
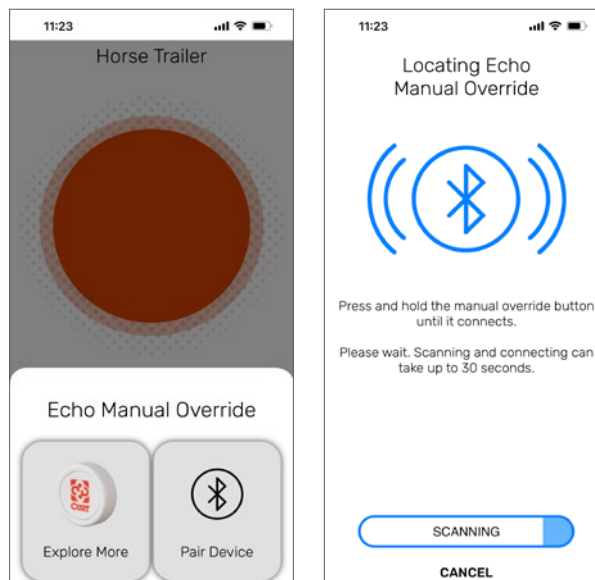
Select the 'Echo® Manual Override Button' option from this screen.



Step 2

Select the pair device button in the app. While the app is scanning, press and hold the manual override button to pair.

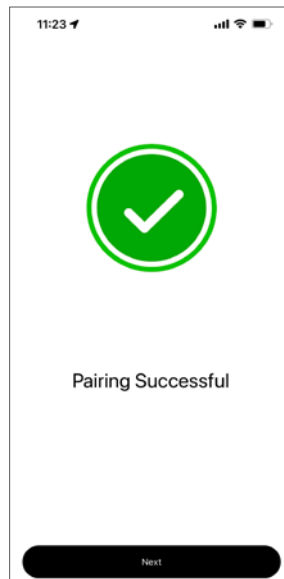
If at any point, you want to stop the scan, press the 'Cancel' button.



Step 3

After notification 'Pairing Successful' appears, select 'Next' to complete pairing.

If the notification 'Device Not Found' appears, pairing was unsuccessful and you will need to repeat step 2.



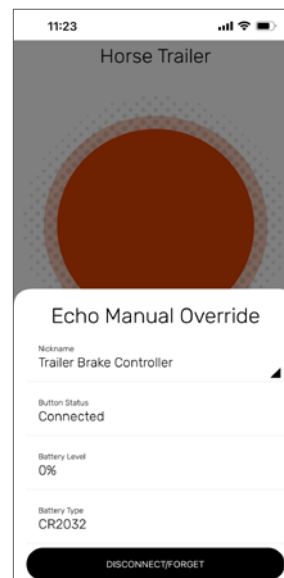
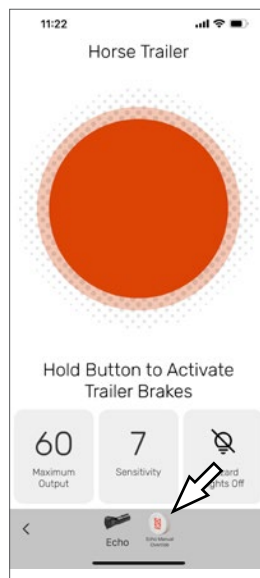
Step 4

To view the connection status, battery level and other details of the override button, select the 'Echo® Manual Override Button' option from the main screen.

The override button will continue to operate on any screen within the app or if the device screen is off, as long as the app is still running. However, you will only have visibility of the manual brake activation ring, displaying the stopping power being applied to the brakes while on the 'Active Profile' screen.

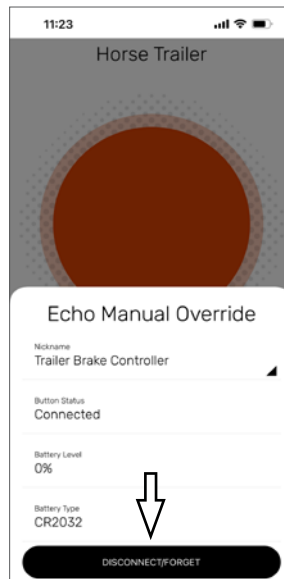
If you close and reopen the app, you must press the override button to reactivate and pair to your phone again.

As you press the override button, the brake activation ring will show stopping power being applied to the brakes.



Step 7

To disconnect the override button, select 'Disconnect / Forget' button from the 'Echo® Manual Override Button' status screen



Step 8

Locate a suitable mounting location for the override button inside the vehicle. Clean the mounting surface prior to adhering the button.

The override button comes with a reusable adhesive sticker on the base. Peel off the protective film and mount the button in a safe and convenient place to operate while driving.

⚠ WARNING

Do not place the button over vehicle safety devices such as air bags, vehicle indicators or displays.

If you want to change the position of the button, you can remove it by peeling the button along with the adhesive off of the surface.

NOTICE

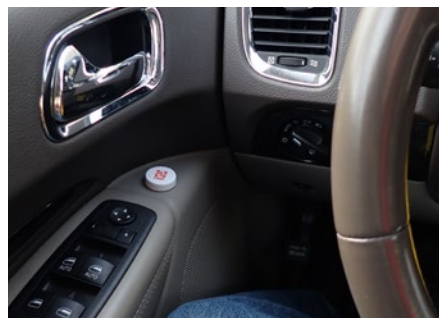
Be sure to peel rather than pull when removing the override button and adhesive to avoid damage to the mounting surface.

To clean your reusable adhesive, remove it from the button's base and rinse with water. Rub carefully and rinse again.

NOTICE

Do not apply solvents, chemicals or abrasive cleaning products as this will damage the adhesive.

Let the adhesive air-dry and it will return to its initial state and be ready to adhere again.



Step 3

To change the battery, follow these steps:

1. Open the battery hatch by sticking your Echo manual override button to a surface and twisting it to the left.
2. Remove the old battery and replace it with a new CR2032 battery with the '+' side facing towards you.
3. Place the top part of the Echo manual override button back onto the bottom and twist to the right until it clicks and the adhesive releases the surface.

