

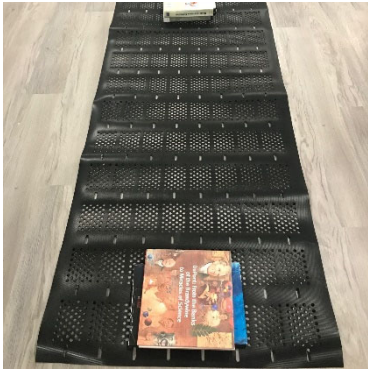


# How to Set up Your SIMPO Compost Bin

For any questions or issues, please contact customer service: [support@simpotools.com](mailto:support@simpotools.com)

**Box content (300 gallons): 1x compost bin, 8x buckle keys, 4x support rods, 1x setup instructions**

**Box content (500 gallons): 1x compost bin, 16x buckle keys, 6x support rods, 1x setup instructions**



**STEP 1:** Lay the entire length of the composter sheet flat on the floor and place some heavy objects like books on top to break the curl. 10 to 15 minutes should do.



**STEP 2:** Expand the compost bin to the desired size (diameter) and align the columns of oval slots on two overlapping ends.



**STEP 3:** Insert the buckle keys through the overlapping oval slots, then turn 90° to lock them.



**STEP 4:** Insert the support rods through the top (or second from the top) and bottom oval slots. Do this for 4 to 6 columns.



**STEP 5:** You are done. You are ready to easily produce nutritious compost with your SIMPO compost bin.

**Pro Tip:**

- When setting up the bin at a smaller size, you may use a few buckle keys in several columns of oval slots to secure a tight fit and make the edges flush.

**Pro Tip:**

- You may insert the support rods through the second oval slot from the top and push the rods further into the ground to anchor the bin.

**Pro Tips:**

- You can start at a smaller diameter. When you have more materials, expand your composter to its max capacity.
- Once one pile of compost is done in a few months, you can simply lift the compost bin and move it to a different location to start a new pile.

## 100% Satisfaction Guaranteed

We are a small business based in Philadelphia, the city of brotherly love. We are committed to the highest level of product quality and customer service. If you have any questions or concerns, please let us know so that we can make things right to ensure your **COMPLETE SATISFACTION.**