



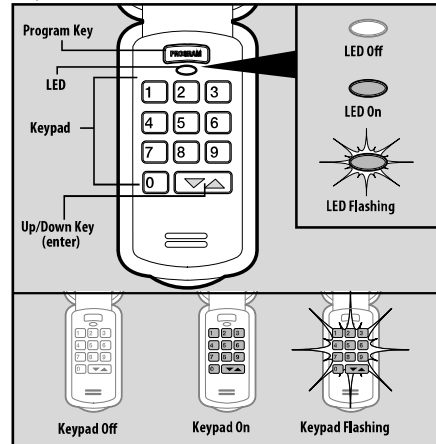
Wireless Keypad Instructions

For use with Genie IntelliCode® garage door openers

Scan this code with a QR code reader app on a smart device to view a video of these instructions or visit www.geniecompany.com



Keypad Overview



Activate keypad by opening battery compartment and pull protective tab. Reinstall compartment door to begin programming.



SAVE THESE INSTRUCTIONS FOR FUTURE USE

WARNING
MOVING DOOR CAN CAUSE SERIOUS INJURY OR DEATH.

- **DO NOT** install transmitter (keypad) unless the door operator's safety device works as required by the door operator's manual.
- Wall Console must be mounted in sight of door, at least 5 feet above floor and clear of moving door parts.
- **Keep people clear** of opening while door is moving.
- **DO NOT** allow children to play with the transmitter or door operator.

If safety reverse does not work properly:

- **Close door then disconnect opener** using the manual release handle.
- **DO NOT** use transmitter or door operator.
- Refer to Door and Door Opener Owner's Manuals before attempting any repairs.

AVERTISSEMENT
DÉMÉNAGEMENT PORTE PEUT CAUSER DES BLESSURES GRAVES OU LA MORT.

- NE PAS installer le transmetteur (clavier) à moins que le dispositif de sécurité de l'opérateur de porte ne fonctionne comme l'exige le manuel d'utilisation de la porte.
- Console murale doit être montée en vue de la porte d'au moins 5 pieds au-dessus-de-chaussée et claire des pièces mobiles de la porte.
- Garder les personnes clair de l'ouverture lorsque la porte est en mouvement.
- Ne pas laisser les enfants jouer le premier match à distance ou la porte.

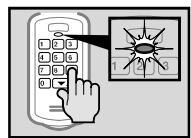
Si la sécurité inverse ne fonctionne pas correctement:

- Fermer la porte, puis débranchez moteur à l'aide de la poignée de déverrouillage manuel.
- Ne pas utiliser d'ouverture à distance ou la porte.
- Reportez-vous à la porte et ouvre-porte de propriétaires manuels avant de tenter toute réparation.

It is recommended to complete programming before mounting keypad

Keypad LED's

Successful Entries

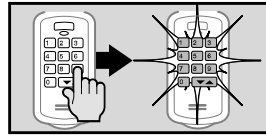


Keypad LED will flash each time a key is pressed and entry is accepted.



Keypad LED and PROGRAM key back light will remain on for 15 seconds indicating a successful program or valid PIN has been entered.

Failed Entries



Keypad LED, PROGRAM key and number pad back light will flash rapidly indicating a problem with programming or an invalid PIN entry.

- Wait 15 seconds until back lighting shuts off and enter a valid PIN or reset keypad to reprogram.

STEP 1) PROGRAM THE NEW KEYPAD TO THE OPENER

Activate keypad by opening battery compartment and pull protective tab. Reinstall compartment door to begin programming.

The existing factory default Personal Identification Number (PIN) for this keypad is the number sequence: 3-5-7

Sync the opener and the keypad by performing the following:

1. Ensure the keypad back lighting is off.
 2. Place garage door opener into PROGRAMMING MODE as illustrated in the column to the right.
 3. Press 3-5-7 in sequence on the keypad.
 4. Press the UP/DOWN key 3 to 4 times slowly until garage door opener operates.
- This completes the programming of a single door opener (door 1) and keypad.
 - IT IS RECOMMENDED THAT YOU CHANGE THIS PIN FROM THE EXISTING FACTORY DEFAULT SETTING OF 3-5-7. See STEP 2 below.

STEP 2) CHANGING THE FACTORY DEFAULT PIN OF 3-5-7:

1. Enter the factory default pin of 3-5-7.
 2. Press PROGRAM key once.
 3. Enter a new PIN of your choice (3-8 digits).
 4. Press PROGRAM key once.
- Your PIN has been changed and your previous PIN will no longer operate the keypad or opener.

STEP 3) OPTIONAL: PROGRAMMING THE KEYPAD FOR MULTIPLE OPENERS (UP TO 3)

Whether the keypad is brand new or you are just adding additional openers to an existing keypad, this STEP assumes that STEPS 1 & 2 have already been completed.

Follow these steps to program opener 2 and/or 3 to the keypad. (Only one PIN number can be used.)

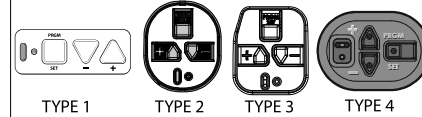
1. Ensure the keypad back lighting is off.
 2. Enter the current PIN.
 3. Press PROGRAM key twice. LED will blink once per second.
 4. Enter total number of openers that keypad will be operating (a total of "2" or "3" openers).
 5. Press PROGRAM key once. LED will blink twice and shut off.
- If LED did not blink twice and shut off, please see **RESETTING THE KEYPAD (FACTORY DEFAULT)** section.
 - THE KEYPAD IS NOW READY TO PROGRAM TO MULTIPLE GARAGE DOOR OPENERS. CONTINUE WITH THE STEPS BELOW.

PROGRAMMING TO MULTIPLE OPENERS CONTINUED

1. Ensure the keypad back lighting is off.
 2. Place desired garage door opener (for door 2 or 3) into PROGRAMMING MODE as shown to the right.
 3. Enter the PIN number on keypad.
 4. Press the UP/DOWN key once.
 5. Press the number of the desired door (door 2 or 3).
 6. Press the UP/DOWN key 3-4 times slowly until garage door opener operates.
- Repeat steps 1 through 6 in this section to program another door opener to this keypad (maximum of 3 doors to 1 keypad).
 - This completes programming of multiple doors. See STEP 4 MULTI-DOOR OPERATION for further instruction.

PUTTING OPENER INTO PROGRAMMING MODE:

Current Production Openers



There are 4 types of programming button pads. Type 1 is shown in these steps. All buttons perform the same function and programming is the same for all types shown above.

Place operator into programming mode: TYPE 1-2-3-4

1. Press and hold the program button until the round LED turns blue, then release.
2. The round LED will go out and the long LED will begin flashing purple.
3. Return to previous STEP.

-OR-

Openers manufactured between 1995 to 2011 and all external receivers

NOTE: Learn Code Buttons are normally located under lens covers on earlier models.

Place operator into programming mode:

1. Press & release Learn Code button once. The red LED will begin to flash.
2. Return to previous STEP.

NOTE: The openers LEARN LED will time out in 30 seconds. Programming must be completed within 30 seconds.

* RESETTING THE KEYPAD (FACTORY DEFAULT):

If the keypad has already been programmed or at any time the programming should be erased and started from the factory default, follow these steps.

1. Ensure that number pad back lighting is off.
2. Press and hold the PROGRAM and UP/DOWN Keys together for approximately 5 seconds.
3. The LED will flash twice and all lights will go out indicating the keypad has been reset.
4. Start at STEP 1 to sync the keypad to an opener.

STEP 4) OPERATING THE KEYPAD WITH THE OPENER(S)

Single Door Operation:

1. Ensure number pad back lighting is off.
2. Enter PIN.
3. Press the UP/DOWN key.
4. Opener will operate.

Multi-Door Operation:

1. Ensure number pad back lighting is off.
2. Enter PIN.
3. Press the UP/DOWN key.
4. Press number key corresponding with desired door (1, 2, or 3).
5. Desired opener will operate.

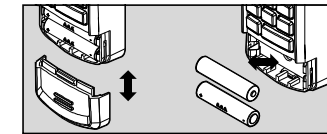
NOTE: Keypad will remain active for 15 seconds after a successful entry is made. During this 15 seconds ANY key will operate the opener.

STEP 5) MOUNTING THE KEYPAD

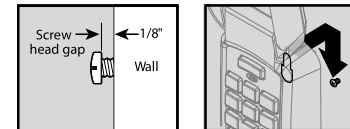
Keypad MUST be mounted within sight of the garage door(s) at least 5 feet above floor and clear of any moving door parts.

- Programming will not be lost during battery removal.

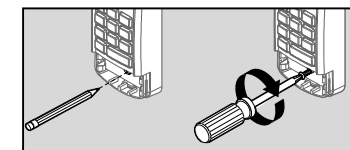
1. Remove battery cover and batteries.



2. Drill a 3/32" pilot hole for the top mounting screw.
3. Install included screw into pilot hole, leaving 1/8" gap between the screw head and wall.
4. Hook the slotted mount on back of keypad over the screw.



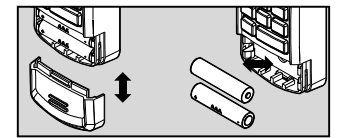
5. Mark and drill a 3/32" pilot hole for the bottom screw and secure keypad to the wall. (Do not over-tighten).
6. Reinstall batteries.



REPLACING BATTERIES

If the keypad back lighting fails to operate batteries may require replacement.

- Programming will not be lost during battery change.



1. Remove battery cover and batteries.
2. Replace batteries with same type alkaline (AAA) and check for proper direction of (+) and (-) terminals. Rechargeable batteries are NOT recommended.

ADDITIONAL (OPTIONAL) PROGRAMMING:

Changing an Existing PIN:

1. Enter current PIN
 2. Press PROGRAM key once.
 3. Enter new PIN (3-8 digits)
 4. Press PROGRAM key once.
- Your PIN has been changed and your previous PIN will no longer operate keypad or opener.

Setting a Temporary PIN:

A temporary PIN allows temporary access to the garage by normally unauthorized personnel such as repairmen or neighbor.

1. Enter current PIN.
 2. Press PROGRAM key 3 times.
 3. Enter a temporary PIN (3 to 8 digits)
 4. Press PROGRAM key once.
- The Temporary PIN will operate garage door opener until the original PIN is used. Use of the original PIN will delete temporary PIN.

For questions, comments or troubleshooting, contact The Genie Company at:
1 Door Drive, Mount Hope Ohio, 44660
or call 1-800-354-3643 or visit our website at:
www.geniecompany.com

FCC Part 15.21 Statement:
Changes or modifications not expressly approved by the party responsible for compliance could void the user's authority to operate the equipment.

FCC / IC Statement:
This device complies with FCC Part 15 and Industry Canada licence-exempt RSS standard(s). Operation is subject to the following two conditions: (1) this device may not cause harmful interference, and (2) this device must accept any interference received, including interference that may cause undesired operation of the device.

Le présent appareil est conforme aux CNR d'Industrie Canada applicables aux appareils radio exempts de licence. L'exploitation est autorisée aux deux conditions suivantes: (1) l'appareil ne doit pas produire de brouillage, et (2) l'utilisateur de l'appareil doit accepter tout brouillage radioélectrique subi, même si le brouillage est susceptible d'en compromettre le fonctionnement.