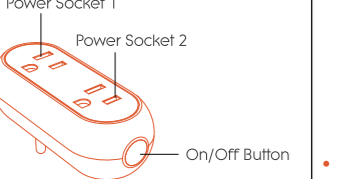


70.00MM

48.00MM

Avatar Capsule Mini Smart Plug Instructions

- Parameters**
- Product: Capsule Dual Control Smart WiFi Plug
 - Model: AWP12L
 - Voltage: 100-240V
 - Rated Current: 10A
 - Rated Power: 1200W



- Light blue : Turn on
- Light off : Turn off
- Blue light rapid blink :Connect WIFI
- Blue light blink slowly :AP Mode

Part 1: Download & Registration

- Scan the QR code to download "AvatarControls" app or search and download app directly from APP Store or Google Play.
- Enter the register/login interface; input the phone No./ Email and password to login, or tap at the bottom of page connected to related authorization interface, input the phone No./Email for getting verification code to register.
- Note: Our APP only supports 2.4 GHz Wi-Fi networks.



Part 2: Add Plug

- preparations :
The socket default setting is turned off, press and hold button for 5s until indicator light quickly blinks, then open the APP to enter "Home" interface.
- Make sure the phone connect with WIFI successfully.
 - Select the + icon (on the upper right) to add the devices, After, the classification Electrical Engineer and, finally, the option Socket.
 - Tap "Confirm indicator rapidly blink".
 - Input WIFI password, then tap "Confirm".
 - Wait for configuring successfully, then tap "Done".

Part 3: Profile

- User could rename the device through tapping the top right icon "..."
(Wie das Bild darstellt)



Notice

- Please check if there is damage caused by transportation. If broken,

please contact supplier for replacement.

- Please follow the specification instruction and notice to keep product in a good and safe use condition.

application.

- Please follow the specification instruction and notice to keep product in a good and safe use condition.

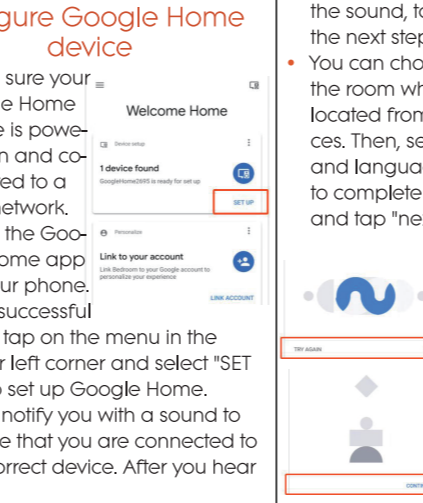
Using Google Home Quick Guide

Preparation

- A Google Home device, or Android phone with Google Assistant.
- Latest Google Home app.
- Latest Google app (Android only)
- A Google account.
- The device display language must be set to English US.
- AvatarControls app and a related account.
- Our smart device (For example, smart plug).
- Complete product networking configuration in the AvatarControls App.

Configure Google Home device

- Make sure your Google Home device is powered on and connected to a Wi-Fi network.
- Open the Google Home app on your phone. After successful login, tap on the menu in the upper left corner and select "SET UP" to set up Google Home.
- It will notify you with a sound to ensure that you are connected to the correct device. After you hear the sound, tap "YES" to proceed to the next step.
- You can choose to differentiate the room where Google Home is located from other Google devices. Then, select the Wi-Fi network and language, wait for the system to complete the configuration, and tap "next".



According to the page prompts, choose whether to agree to the corresponding operation. When the page displays "Google Home is ready," select "continue" to continue to the next step.

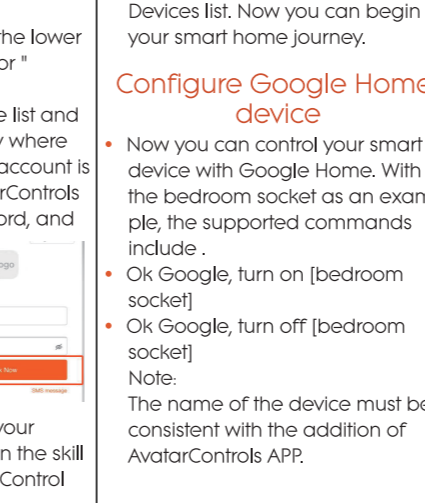
Next is the voice control guide tutorial. Once you're done listening, tap "FINISH SET UP." At this point, Google Home setup is complete.

Key step - link Action

- On the main page of the Google Home app, tap the sidebar menu in the top left corner and

select "Home Control." Then tap the plus sign in the lower right corner and search for "AvatarControls."

- Find AvatarControls on the list and open it, select the country where your AvatarControls app account is located, enter your AvatarControls app account and password, and tap "Link Now."



Devices list. Now you can begin your smart home journey.

Configure Google Home device

- Now you can control your smart device with Google Home. With the bedroom socket as an example, the supported commands include .
- Ok Google, turn on [bedroom socket]
- Ok Google, turn off [bedroom socket]

Note: The name of the device must be consistent with the addition of AvatarControls APP.

Using Amazon Echo Quick Guide

Preparation

- Amazon Alexa APP
- Amazon Alexa account (users need to register their own account)
- AvatarControls APP
- AvatarControls APP account (users need to register their own account, select region as "US".)
- Echo, Echo Dot, Tap and other Amazon voice-operated devices
- Our smart device (For example, smart plug)

Rename the device after configuring successfully, and then name of the device is recommended to use words which easy to pronunciation.

Set your Echo speaker by Alexa APP

- Sign in with Alexa account & password (If not have, sign up first). After login, click the menu at the top left, then choose "Add device".
- Choose a device (for example,Echo). When the right page appears, long press the small dot on your Echo device until the lights turn to be yellow.

hen click "Continue" on APP. (Note:at this time the mobile phone can not open VPN software.)

- Choose user's WiFi and wait for a few minutes.
- After an introduction video, click next step. It will go to "Home" page automatically. Now the echo connected to Alexa APP through WIFI successfully.

Enable our skill in Alexa APP

- Choose "Skills" in the options bar, and then search "AvatarControls" in the input box; Select " AvatarControls" in the search results, and then click "Enabled Skill". (Note: If it indicates that the account has been bound, you can click the " Disable Skill" to remove the binding, and then click the " Enable Skill" to continue to bind a new "AvatarControls account".)
- Input the user name and password that you had previously registered. When you see the right page, it means that the Alexa account linked with AvatarControls account.

Control Device via Alexa APP

After the previous operation is successful, all devices in AvatarControls APP will show in Alexa APP, you can control socket via Echo.

Tap + to add a group and control multiple devices at once. Note: "Echo" is one of the wake-up names, which can be any of there three names (Settings): Alexa/Echo/Amazon.

- Support Skill List Users can control devices by instructions like below: Alexa, turn on [bedroom socket] Alexa, turn off [bedroom socket]

Note: The name of the device must be consistent with the addition of AvatarControls APP.

FC CE IC