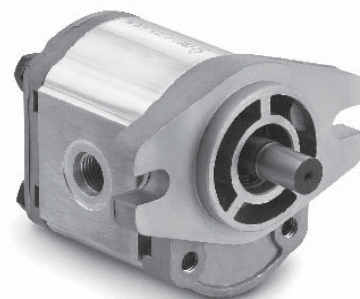


Hydraulic Gear Pump Model GP-F10

Technical Data

Model GP-F10 is an all aluminium construction, high pressure Hydraulic Gear Pump with 7 displacement sizes from 0.07 to 0.48 cu.in/rev. (1.3 to 8.0 cm3/rev). The standard mounting flange is SAE AA – 2 bolt, standard ports are SAE-8 inlet and SAE-6 outlet, and standard drive shaft is 1/2 inch straight shaft with 1/8 inch key.



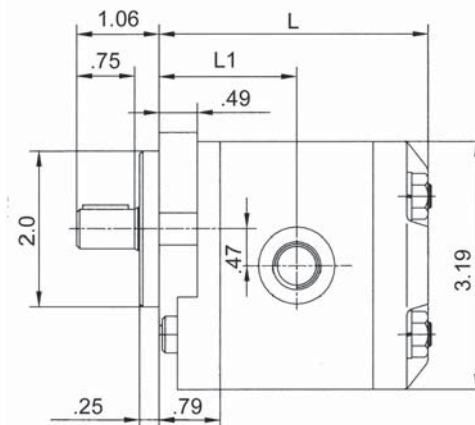
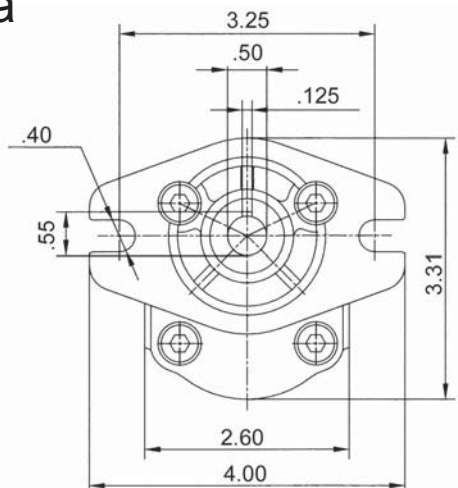
| Model | Displacement | | Pressure | | Speed RPM | | Weight | |
|-----------|--------------|---------|----------|-----|-----------|------|--------|------|
| | cu.in/rev | cm3/rev | PSI | Mpa | Rated | Max | Lbs. | Kg |
| GP-F10-13 | 0.08 | 1.3 | 3625 | 25 | 2000 | 5000 | 2.02 | 0.92 |
| GP-F10-20 | 0.12 | 2.0 | 3625 | 25 | 2000 | 5000 | 2.31 | 1.05 |
| GP-F10-27 | 0.16 | 2.7 | 3625 | 25 | 2000 | 5000 | 2.68 | 1.22 |
| GP-F10-34 | 0.20 | 3.4 | 3625 | 25 | 2000 | 5000 | 2.99 | 1.36 |
| GP-F10-41 | 0.25 | 4.1 | 3625 | 25 | 2000 | 4000 | 3.34 | 1.52 |
| GP-F10-51 | 0.31 | 5.1 | 3625 | 25 | 2000 | 4000 | 3.78 | 1.72 |
| GP-F10-61 | 0.37 | 6.1 | 3625 | 25 | 2000 | 4000 | 4.18 | 1.90 |
| GP-F10-80 | 0.48 | 8.0 | 3480 | 24 | 2000 | 4000 | 5.01 | 2.27 |

Recommended working conditions:

1. FILTRATION 25 micron or better
2. OIL VISCOSITY 6 to 200 cSt
3. INLET PRESSURE 12 to 32 psi abs.
4. OIL TEMPERATURE -25 to 80 degrees C (-12 to 175 degrees F).
5. AMBIENT -22 to 55 degrees C (-8 to 130 degrees F).

Flow rate in gpm
 Displacement (cu.in/rev) X speed (rpm) / 231
 Volumetric efficiency % ≥93

Installation Data



Port Sizes
 Inlet - SAE-8 (3/4-16)
 Outlet - SAE-6 (9/16-18)

| Model | L | | L1 | | SAE Ports | |
|-----------|----|------|----|------|-----------|-----|
| | mm | In. | mm | In. | in | out |
| GP-F10-13 | 82 | 3.23 | 42 | 1.65 | -8 | -6 |
| GP-F10-20 | 84 | 3.30 | 43 | 1.69 | -8 | -6 |
| GP-F10-27 | 86 | 3.39 | 44 | 1.73 | -8 | -6 |
| GP-F10-34 | 88 | 3.46 | 45 | 1.77 | -8 | -6 |

| Model | L | | B | SAE Ports | | |
|-----------|-----|------|------|-----------|----|-----|
| | mm | In. | | In. | in | out |
| GP-F10-41 | 90 | 3.54 | 46 | 1.81 | -8 | -6 |
| GP-F10-51 | 93 | 3.66 | 47.5 | 1.87 | -8 | -6 |
| GP-F10-61 | 96 | 3.78 | 49 | 1.93 | -8 | -6 |
| GP-F10-80 | 101 | 3.97 | 51.5 | 2.01 | -8 | -6 |

Ordering Information

GP - **F10** - **20** - **P** - **C**

Aluminum Gear Pump High Pressure Series Displacement cm3/rev (see chart) 13/20/27/34 41/51/61/80 Drive Shaft P-1/2 Dia Straight Rotation Direction C- Clockwise A-Counter Clockwise (viewed from drive shaft end)