

REGENCY

T-Base Legs for Rectangle Tables- All models & sizes • INSTRUCTIONS

(MVTBT22 (Via), MCBT22 (Cain Cafe), MTBT22 (Cain), MKTBT22 (Kobe))

Organize your parts.



Parts:

A: T-Base



Quantity: 2

B: Post



Quantity: 2

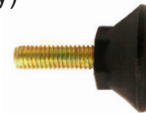
C: Spider



Quantity: 2

Hardware:

D: Feet (MVTBT22, MCBT22, MTBT22 Only)



Quantity: 4

E: Screws



Quantity: 16

D: Feet (MKTBT22 Only)



Quantity: 4

IMPORTANT NOTICE:

Place all wooden parts on a clean and smooth surface such as a rug or carpet to avoid scratching the parts. Check to be sure that you have all parts and hardware. Remove all wrapping materials, including staples & packing straps before you start to assemble. Keep all hardware parts and packaging out of reach of children.

Any problems or questions call Regency Office Furniture at 1-866-816-9822 or email customerservice@regencyof.com

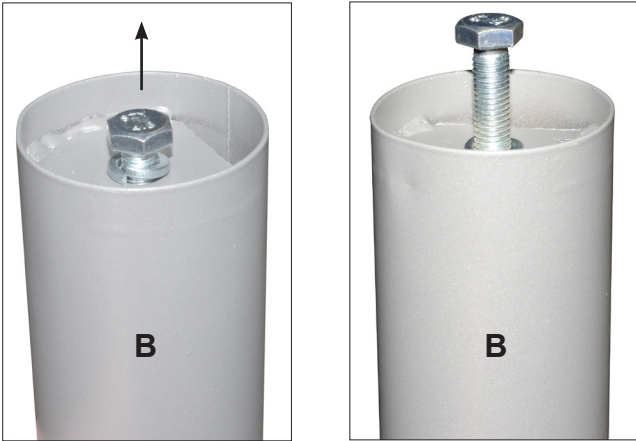
REGENCY

T-Base Legs for Rectangle Tables- All models & sizes • INSTRUCTIONS

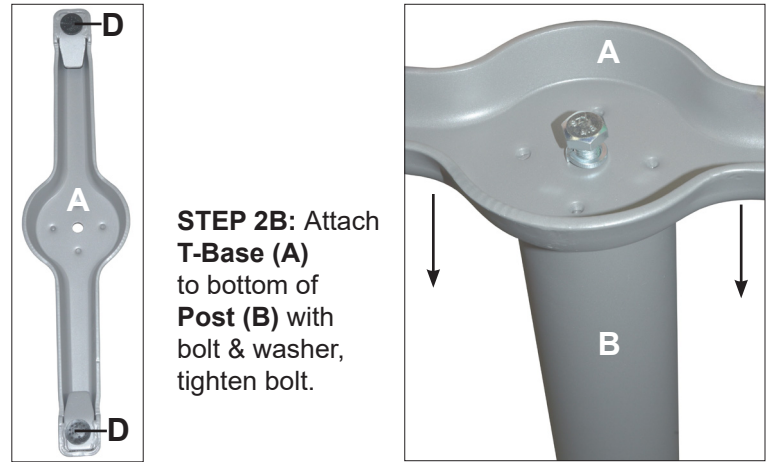
(MVTBT22 (Via), MCBT22 (Cain Cafe), MTBT22 (Cain), MKTBT22 (Kobe))

Organize your parts.

STEP 1: Unthread single bolt & washer from bottom of Post (B).

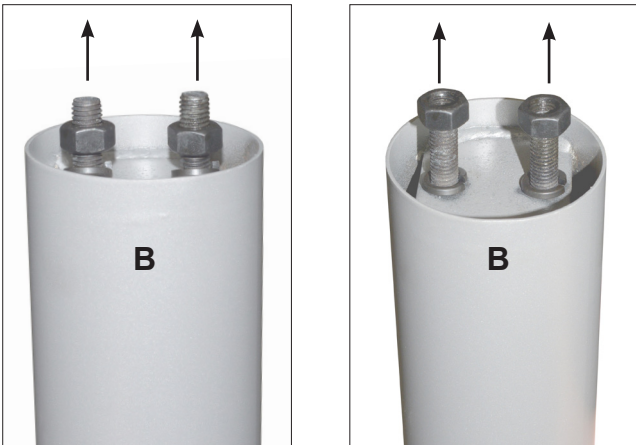


STEP 2A: Attach 2 Feet (D) to bottom of T-Base (A).

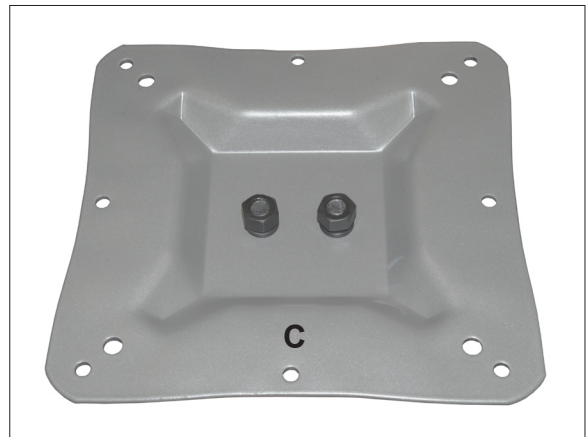


STEP 2B: Attach T-Base (A) to bottom of Post (B) with bolt & washer, tighten bolt.

STEP 3: Unthread bolts & washers from top of Post (B).



STEP 4: Attach Spider (C) to top of Post (B) using bolts and washers.



STEP 5: Repeat Steps 1-4 for second T-Leg.



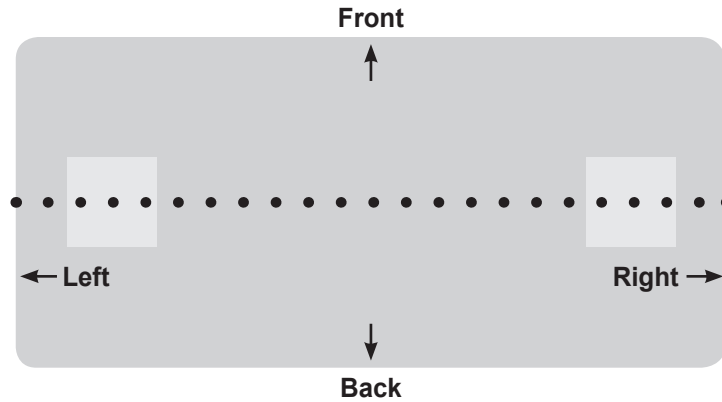
REGENCY

T-Base Legs for Rectangle Tables- All models & sizes • INSTRUCTIONS

(MVTBT22 (Via), MCBT22 (Cain Cafe), MTBT22 (Cain), MKTBT22 (Kobe))

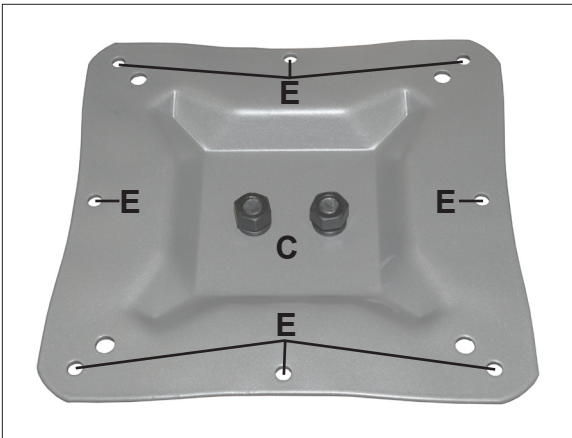
Organize your parts.

STEP 6: On a clean flat surface, turn Table Top upside down. Draw a horizontal line across the table bottom that is equidistant from front to back of the table.



STEP 7: Place each T-Leg equidistant from Left and Right edges of the table top, place in the center of the drawn line at user's desired distance.

STEP 8: Attach T-Legs to Table Top using 8 Screws (E) per Spider (C). Using two people, flip table when complete.



IMPORTANT NOTICE:

Place all wooden parts on a clean and smooth surface such as a rug or carpet to avoid scratching the parts. Check to be sure that you have all parts and hardware. Remove all wrapping materials, including staples & packing straps before you start to assemble. Keep all hardware parts and packaging out of reach of children.

Any problems or questions call Regency Office Furniture at 1-866-816-9822 or email customerservice@regencyof.com