

REGENCY

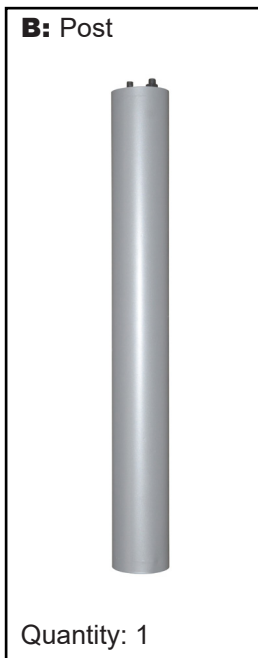
X-Base for Square & Round Tables- All models & sizes • INSTRUCTIONS
(MCBX22/30 (Cain Cafe), MVCTBX22/30 (Via Cafe), MTBX22/30/36 (Cain), MKTBX22/30/36 (Kobe))

Organize your parts.



Parts:

Hardware:



IMPORTANT NOTICE:

Place all wooden parts on a clean and smooth surface such as a rug or carpet to avoid scratching the parts.
Check to be sure that you have all parts and hardware.
Remove all wrapping materials, including staples & packing straps before you start to assemble.
Keep all hardware parts and packaging out of reach of children.

Any problems or questions call Regency Office Furniture at 1-866-816-9822 or email customerservice@regencyof.com

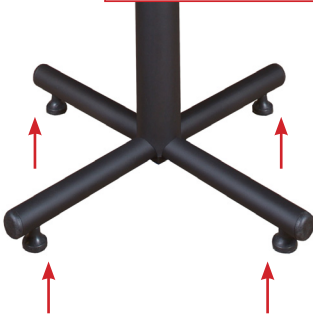
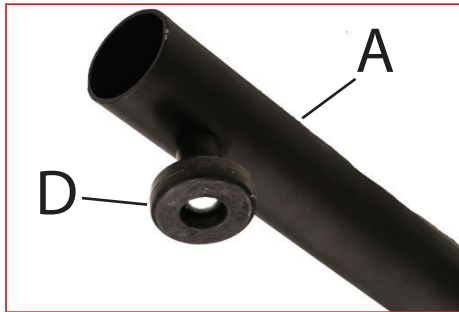
REGENCY

X-Base for Square & Round Tables- All models & sizes • INSTRUCTIONS

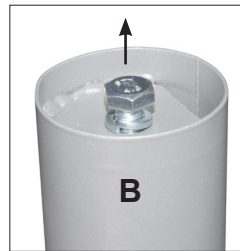
(MCBX22/30 (Cain Cafe), MVCTBX22/30 (Via Cafe), MTBX22/30/36 (Cain), MKTBX22/30/36 (Kobe))

Organize your parts.

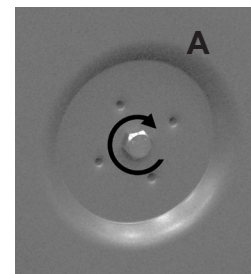
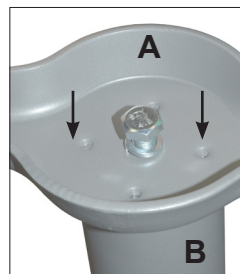
STEP 1: Attach Feet (D) to bottom of X-Base (A).



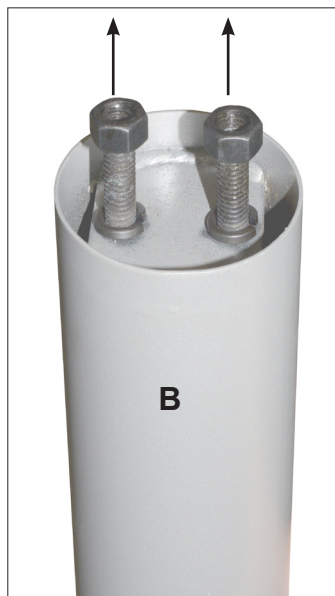
STEP 2A: Unthread single bolt & washer from bottom of Post (B).



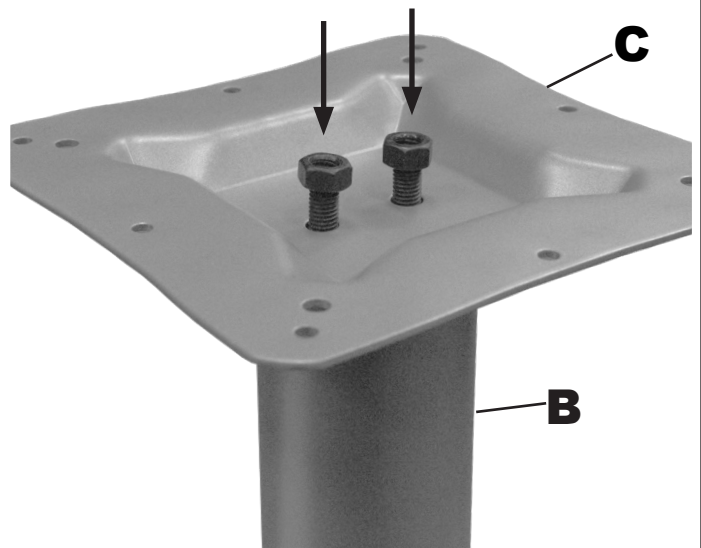
STEP 2B: Attach X-Base (A) to bottom of Post (B) with bolt & washer, tighten bolt.



STEP 3: Unthread bolts & washers from top of Post (B).



STEP 4: Attach Spider (C) to top of Post (B) using bolts and washers.



REGENCY

X-Base for Square & Round Tables- All models & sizes • INSTRUCTIONS

(MCBX22/30 (Cain Cafe), MVCTBX22/30 (Via Cafe), MTBX22/30/36 (Cain), MKTBX22/30/36 (Kobe))

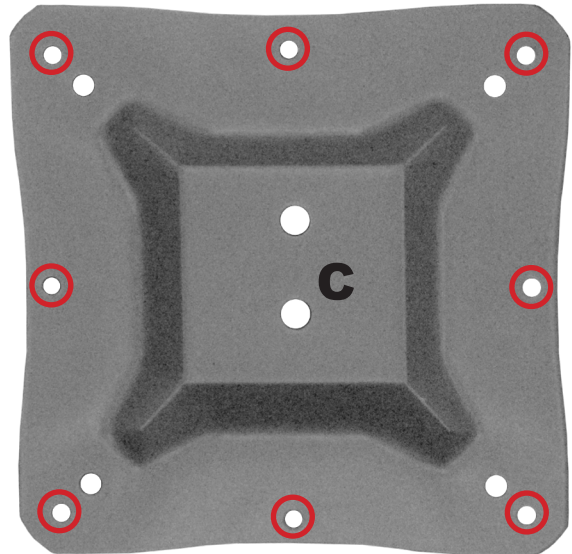
Organize your parts.


STEP 5: Attach a **Tabletop*** to the assembled **Base**. Start by placing the tabletop facedown and then find the center & mark it. Then, place the base in the center of the top. Then use the **8 Screws (E)** in the 8 holes on the **Spider (C)** to attach the top to the base.



* **Tabletop** is not included with base purchase

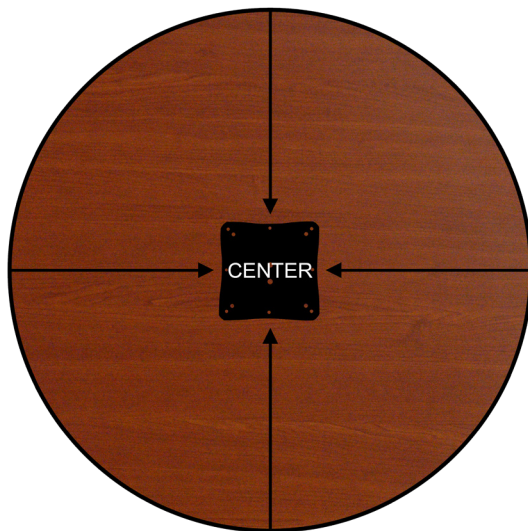
STEP 5 Diagram 1: Spider (C) Hole Pattern



 = Screw hole to use.

STEP 5 Diagram 2: Round Tabletop Center

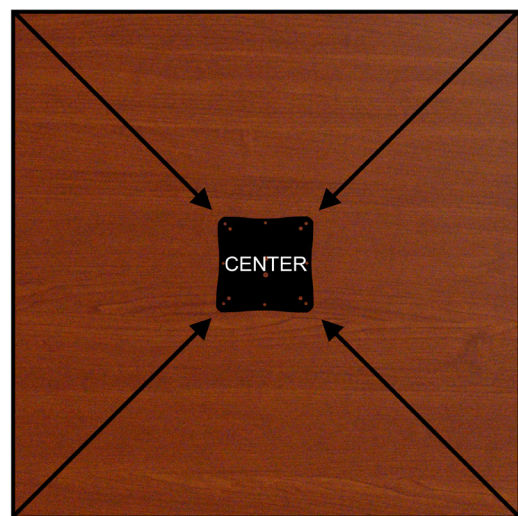
Measure and draw* from top to bottom and left to right to find the center.



* **Make sure the drawings can be removed**

STEP 5 Diagram 3: Square Tabletop Center

Measure and draw* from corner to corner diagonally to find the center.



* **Make sure the drawings can be removed**