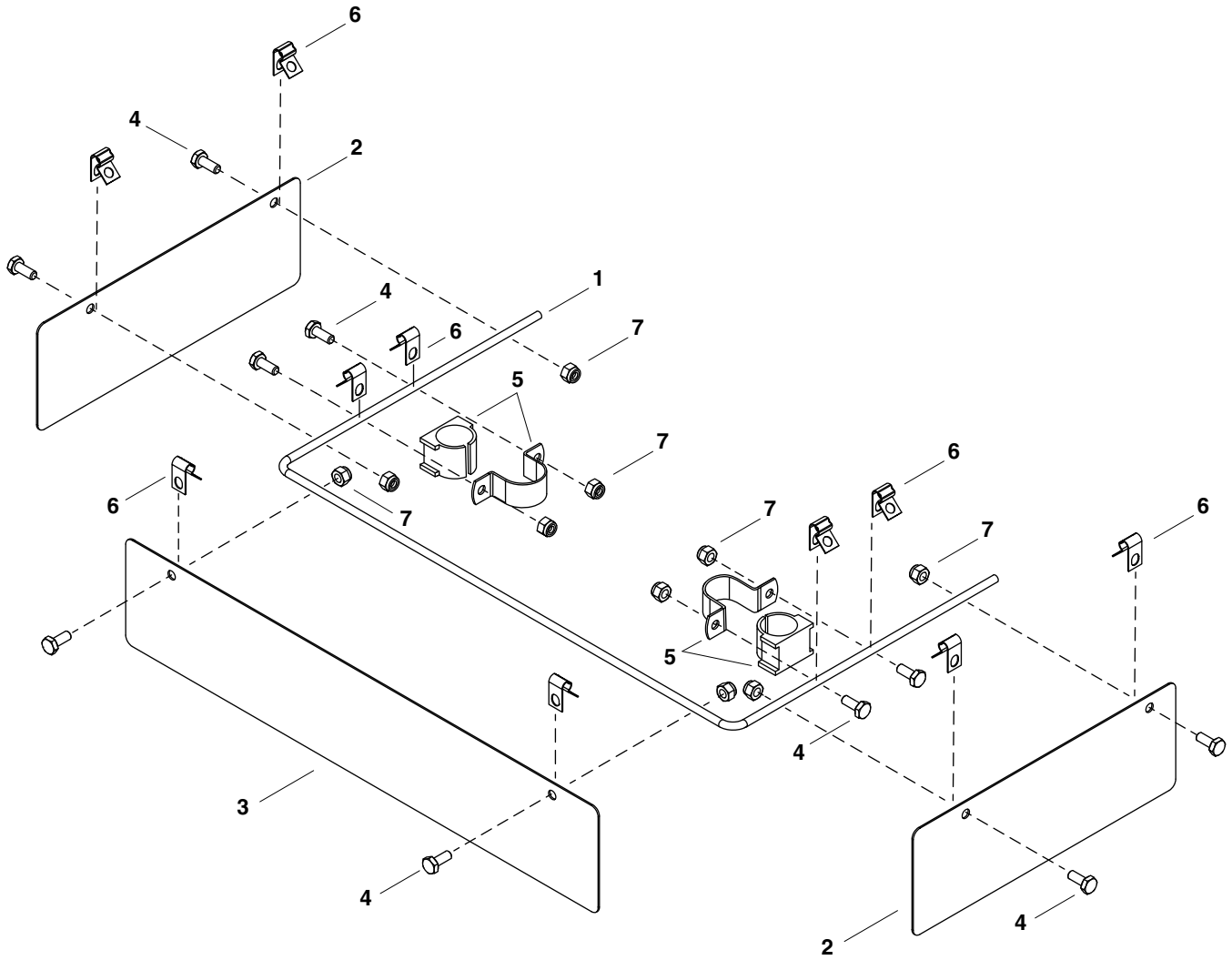


# 6-197



REF	QTY	PART NO	DESCRIPTION
1	1	2-208	TUBE, DEFLECTOR FRAME 110
2	2	2-209	DEFLECTOR, SIDE
3	1	2-210	DEFLECTOR, FRONT
4	10	43866	BOLT, HEX 1/4-20 X 5/8 GR5
5	2	4-13	CLAMP, TUBE
6	10	41196	CLAMP, 7/32 BARE X 0.28 CONDU
7	10	47189	NUT, HEX 1/4-20 NYLOC
	1	3-108	INSTRUCTION SHEET