

UNIVERSAL

CHIEF

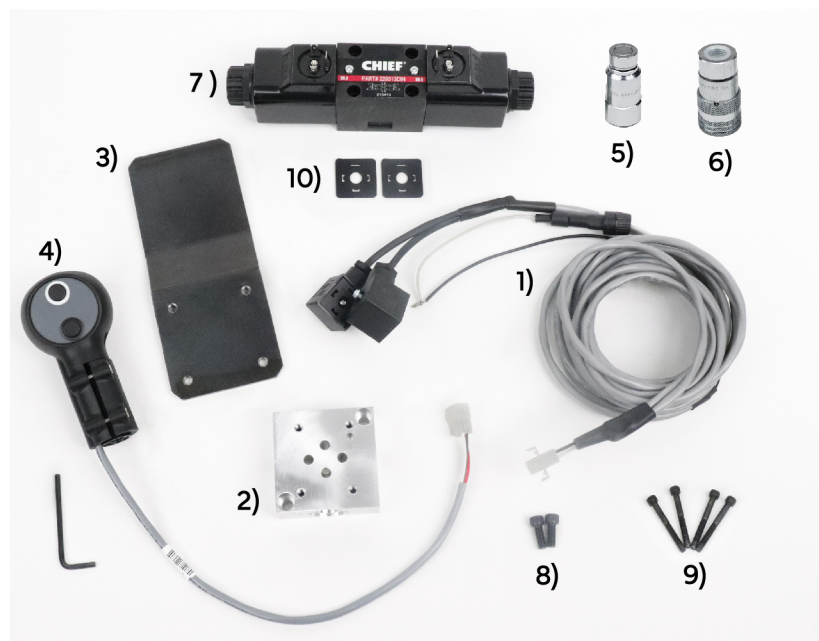
THIRD FUNCTION KIT

DO MORE WITH YOUR TRACTOR

KIT ASSEMBLY GUIDE

What's Included:

- 1) Wiring Harness with DIN Connectors
- 2) Portblock
- 3) Portblock Bracket
- 4) Pre-wired, Sure Grip™ 2-Button AU Series Handle
- 5) ½" Male with ½" NPTF Skid Steer type Flat Face Quick Coupler
- 6) ½" Female with ½" NPTF Skid Steer type Flat Face Quick Coupler
- 7) D03, 3-Position 12VDC Solenoid Valve
- 8) ¼"-20x5/8" Portblock Mounting Screws (qty. 2)
- 9) ¼"-20x1-3/4" Valve Mounting Screws (qty. 4)
- 10) DIN Water Seal (qty. 2)



Step 1:

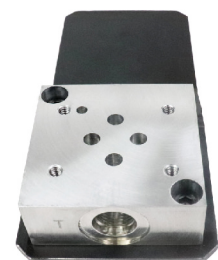
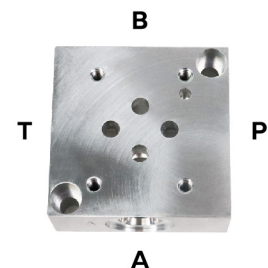
Determine which direction you wish the Portblock (2) to face when mounted on the Portblock Bracket (3). Your Portblock's ports are marked for use as follows:

P = Pressure In

T = Tank return line to reservoir

A = Cylinder connection (Work)

B = Cylinder connection (Work)

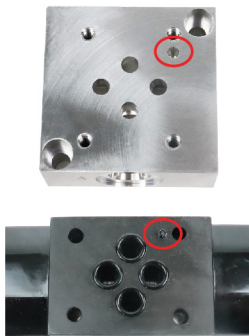


Step 2:

With the alignment pin hole on the Portblock (2) facing out, mount the Portblock (2) to Portblock Bracket (3) using the two 5/8" Portblock Mounting Screws (8).

Step 3:

Remove rubber plug from bottom of Solenoid Valve (7) with caution; oil may leak from valve ports. Locate the pin on the bottom of the Solenoid Valve (7), and align with the pin hole on the Portblock. Mount the Solenoid Valve (7) to the Portblock (2), using the four 1-3/4" Valve Mounting Screws (9).



Step 4:

Remove protective caps from Solenoid Valve (7) electrical prongs. Seat DIN Water Seals (10) over the three prongs of the valve, aligning the straight hole in the seal with the straight prong.



Step 5:

Seat the two DIN connectors of the Wiring Harness (1) on the Solenoid Valve (7) electrical prongs, aligning the straight hole in each DIN with the corresponding straight prong. Tighten screws on the top of the connectors to secure the mount.



Step 6:

Loosen clamp screws on the AU Series Handle (4) using the supplied hex key. Remove the three control handle bushings and un-nest them. Determine which of these bushings is properly sized for your mounting purposes. Return that bushing, nested inside all bushings that are larger, back inside the handle.



Step 7:

To complete your installation and attach to your tractor, consult with your equipment manufacturer or an authorized installation professional.

IMPORTANT: Any modification to your equipment or its operation systems carries potential risks. Bailey International, LLC makes no representations or warranties concerning what these impacts may be. Proper installation of the Universal Third Function Kit on your equipment is solely the user's responsibility. Bailey and its authorized re-sale partners are not responsible for equipment damage, injuries or any other impact related to the installation or use of this kit. Please consult with your equipment's manufacturer or an authorized installation professional for assistance installing the Chief® Universal Third Function Kit on your specific equipment model.

