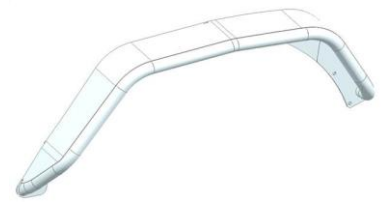




# REAR TUBE FENDER

Part No. JL010RF



Fits: **Current JEEP GLADIATOR**



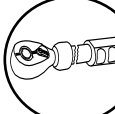
THE GRILLE GUARD MAY INTERFERE WITH PARKING SENSORS, PROXIMITY SENSORS AND CRUISE CONTROL SENSORS.



REMOVE CONTENTS FROM BOX. VERIFY ALL PARTS ARE PRESENT.



READ INSTRUCTIONS CAREFULLY BEFORE STARTING INSTALLATION.



DO NOT OVER TORQUE. STANDARD OPERATING LOAD FOR TIGHTENING BODY MOUNT NUTS & BOLTS VARIES FROM 7 TO 8.5 FOOT POUND FOR M6.



60-180 min



Cutting May be Required



Drilling Is Required



support@trailfx.com



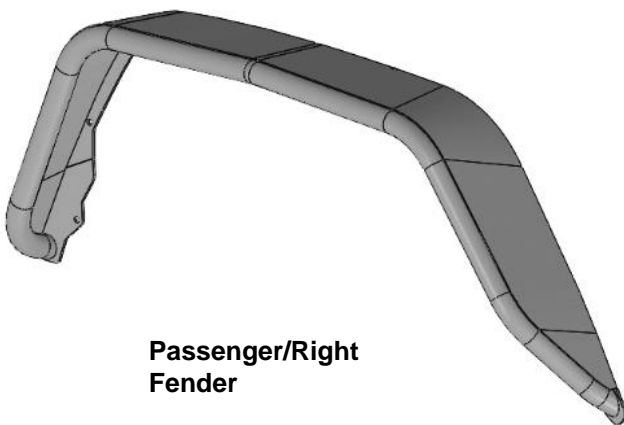
1 866 638 4870



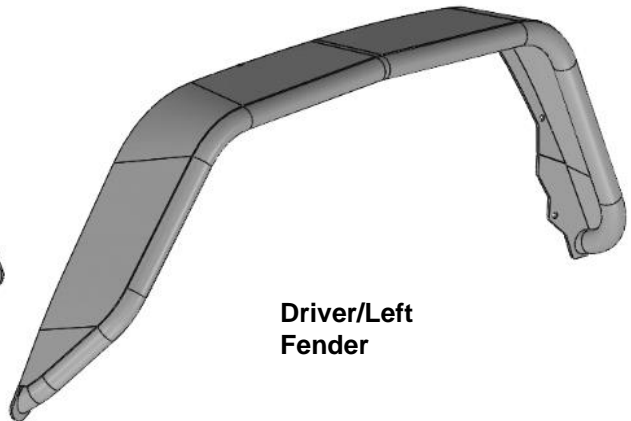
POLISHED STAINLESS STEEL – LIMITED LIFETIME  
POWDER COATED BLACK – 3 YEARS

### PARTS LIST:

Qty	Part Description	Qty	Part Description
1	Driver/Left Rear Fender	16	6mm Lock Washers
1	Passenger/Right Rear Fender	16	6mm x 12mm x 1.6mm Flat Washers
1	6mm Threaded Insert Tool	14	6mm Flange Nuts
2	6mm Threaded Inserts	1	4mm Hex Wrench
16	6mm x 25mm Button Head Bolts		



Passenger/Right Fender



Driver/Left Fender

### PROCEDURE:

**REMOVE CONTENTS FROM BOX. VERIFY ALL PARTS ARE PRESENT. READ INSTRUCTIONS CAREFULLY. CUTTING AND MODIFICATION IS REQUIRED TO REINSTALL THE PLASTIC FENDER LINER. DRILLING IS REQUIRED. ASSISTANCE IS RECOMMENDED.**

1. Start installation on the Driver/Left side of the vehicle. Release the plastic clips and remove any hardware attaching the liner to the outer edge and underside of the fender and the body, **(Figure 1)**. Remove the inner fender liner.
2. Next, firmly pull the fender straight outward from the body to pop the clips from the mounting holes, **(Figure 2)**. Remove any clips left attached to the body panel and move the fender to a smooth, clean surface.
3. Use an electric drill and 25/64" drill bit, (not included) to drill out the mounting hole in the front of the wheel well the body **(Figures 3 & 4)**. **VERY IMPORTANT:** Only drill through the outer sheet metal to enlarge the holes for a Threaded Insert, **do not drill completely through the body.**

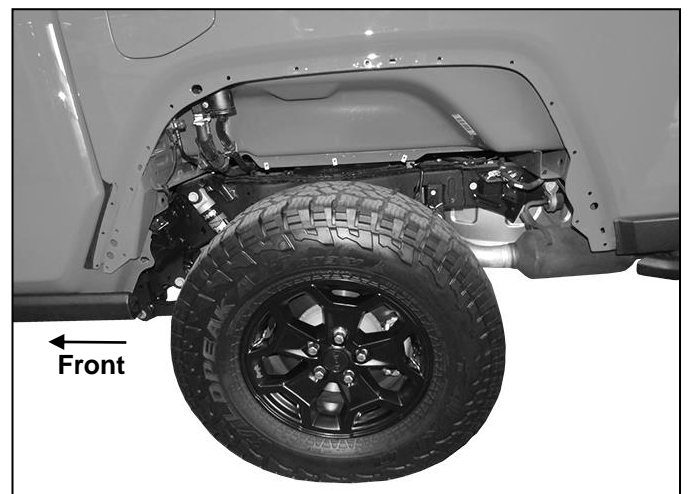
- a. Select the 6mm Threaded Insert Installation Tool and (1) 6mm Threaded Insert, **(Figure 6-A)**.
  - b. Screw the Insert onto the threaded end of the Insert Tool, **(Figure 6-A)**.
  - c. Firmly hold the Tool and push the Insert into one of the drilled holes, **(Figure 6-B)**.
  - d. Insert should fit snug into the drilled hole. Lightly tap the Tool and Insert into the hole with a small hammer if necessary.
  - e. Firmly hold the hex nut on the Insert Tool in place with a wrench and turn the hex bolt clockwise to tighten the bolt and expand the Insert in the hole **(Figure 6-C)**.
  - f. Once Insert is fully compressed and expanded, remove the Tool from the Insert. **WARNING:** Do not overtighten Insert or damage to the Insert may result.
4. With assistance, hold the Fender up in position. Attach the Fender to the previously installed Threaded Insert with (1) 6mm Button Head Bolts, (1) 6mm Lock Washers and (1) 6mm Flat Washers, **(Figure 7)**. Do not tighten hardware at this time.
  5. Next, attach the Fender to the (7) remaining mounting locations with access to the back of the outer body panel. Attach the Fender to the (7) locations with (7) 6mm Button Head Bolts, (7) 6mm Lock Washers, (7) 6mm Flat Washers and (7) 6mm Flange Nuts, **(Figures 5, 7—9)**. Do not tighten hardware at this time.
  6. **With the fender in place, determine if plastic fender liner will be reinstalled**
    - a. Slide fender liner into position.
    - b. Trim the outer section from the liner. **NOTE:** Actual amount to remove from liner to be determined by installer. Leave as many mounting points on the plastic liner as possible.
    - c. Reinstall modified plastic fender liner if desired.
  7. Adjust the position of the Fender and fully tighten all hardware.
  8. Repeat **Steps 1—7** to attach the Passenger/Right Fender.
  9. Do periodic inspections to the installation to make sure that all hardware is secure and tight.

**To protect your investment**, Do not use any type of polish or wax that may contain abrasives that could damage the finish. Mild soap may be used to clean the Fenders.

### Driver/Left Side Installation Pictured



**(Fig 1) Release clips and all hardware attaching inner fender liner to outer fender (Passenger/Right side shown)**



**(Fig 2) Firmly pull fender straight out from vehicle. Remove any clips still attached to body**

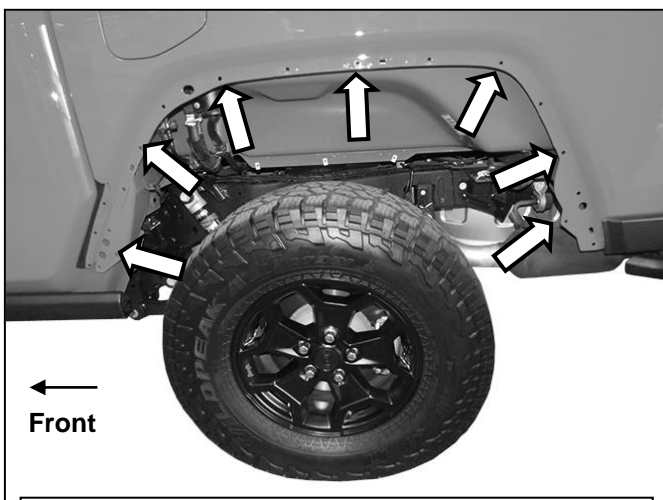
**Driver/Left Side Installation Pictured**



**(Fig 3) Drill 25/64" hole in body panel at front location (arrow) NOTE: The mounting location cannot be accessed from between body panels**

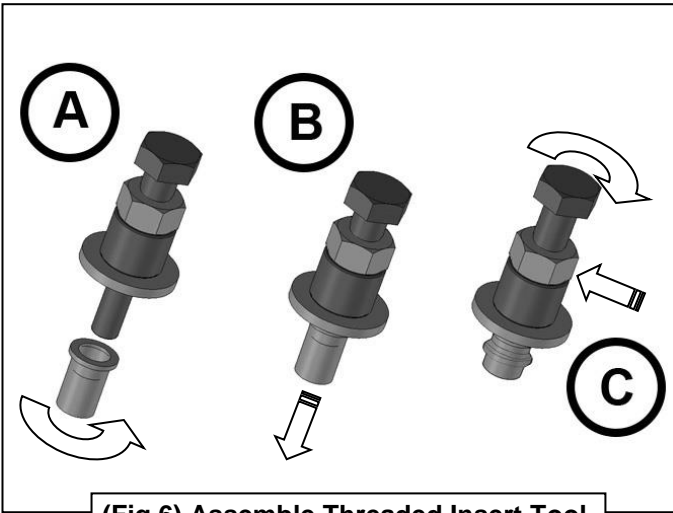


**(Fig 4) Drill the hole in the front of the wheel well with a 25/64" drill bit**



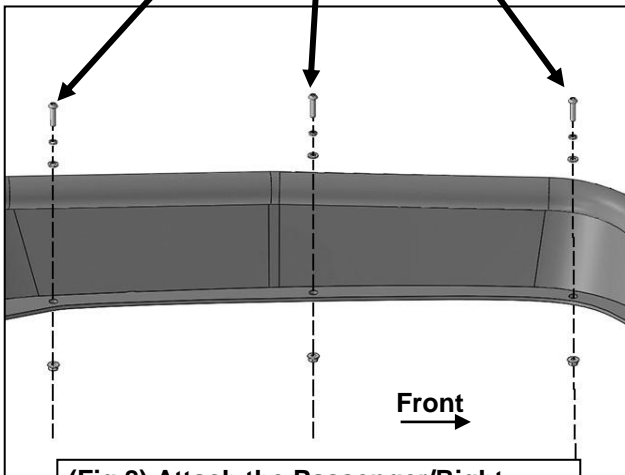
**(Fig 5) Do not drill these (7) mounting locations. NOTE: The (7) mounting locations can be accessed from between body panels**

**Driver/Left Side Installation Pictured**



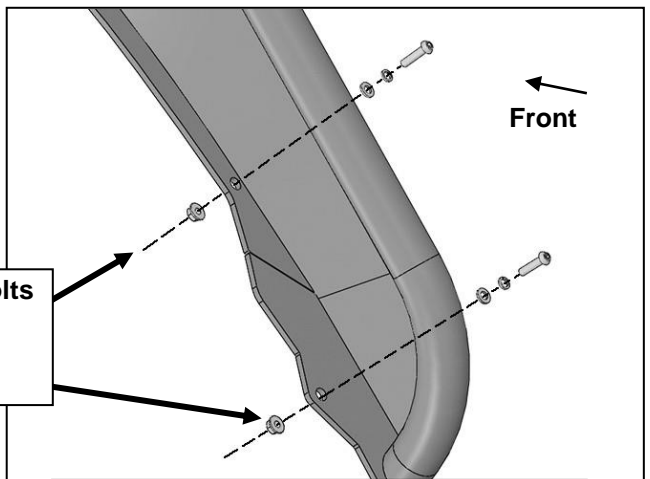
**(Fig 6) Assemble Threaded Insert Tool**

- (3) 6mm Button Head Bolts
- (3) 6mm Lock Washers
- (3) 6mm Flat Washers
- (3) 6mm Flange Nuts



**(Fig 8) Attach the Passenger/Right Fender to the top of the fender location**

- (2) 6mm Button Head Bolts
- (2) 6mm Lock Washers
- (2) 6mm Flat Washers
- (2) 6mm Flange Nuts



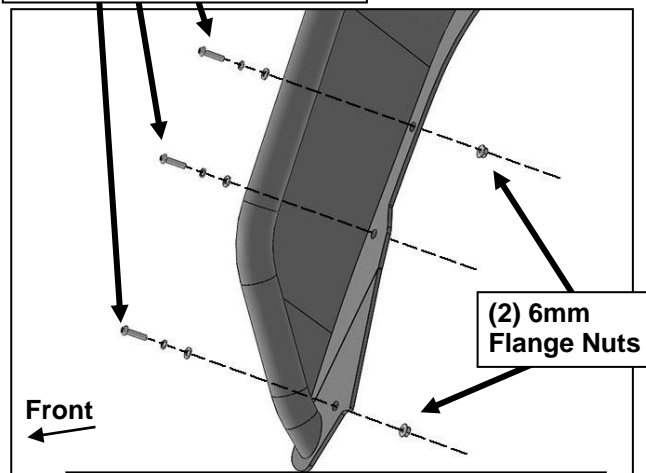
**(Fig 9) Attach the Passenger/Right Fender to the rear of the fender location**

**(6-A) Select Insert Tool and (1) Insert. Thread Insert onto end of Insert Tool. Hand tighten only, do not tighten hex bolt**

**(6-B) Firmly hold assembly and push Insert into drilled hole.**

**(6-C) Use a wrench (open or box end) to hold nut (arrow) to prevent nut and tool from turning. Hold Tool Assembly up tight in body panel. Turn hex bolt in Tool clockwise to expand insert in body panel. Remove Tool once Insert is fully tightened. Do not overtighten or Insert may be damaged.**

- (3) 6mm Button Head Bolts
- (3) 6mm Lock Washers
- (3) 6mm Flat Washers



**(Fig 7) Attach the Passenger/Right Fender to the front of the fender location**

**PRODUCT CARE**

- Periodically check the product to ensure all fasteners are tight and components are intact.
- Regular waxing is recommended to protect the finish of the product.
- **Use ONLY Non-Abrasive automotive wax.** Use of any soap, polish or wax that contains an abrasive is detrimental and can scratch the finish leading to corrosion.
- Aluminum polish may be used to polish small scratches and scuffs for **Stainless Steel finish.**
- Mild soap may be used to clean the product for both **Stainless Steel and Black finish.**

**FAQ's****1. Hardware's are not of correct size.**

*In GMC / Chevrolet truck model 2006 & up, customer needs to reuse the factory body bolts to install the bracket. If your vehicle is not GMC / Chevrolet 2006 & up, ensure that holes are not partially covered with any plastic grommet or rust? If it is, remove the plastic grommet & rust from the thread holes & re-try the installation.*

**2. Mounting Bracket are not getting Installed properly.**

*In some cases Illustration images shown in Installation manual may not be the exactly same as per actual vehicle images ,also if Driver / Passenger side mounting brackets are very identical in the design, suggest referring Parts Identification guide to avoid fitment issue.*

**3. Products are thumping / rattling after installation.**

*Ensure that all required mounting brackets / hardware's are installed & tighten correctly. Suggest using white lithium / regular grease between the metal to metal contact surfaces.*

**4. Side Bar is not aligning with vehicle / Step Pads are not aligning with vehicle doors.**

*Side bar may be interchanged or mounting brackets are not installed at the correct position in the vehicle. Refer Parts identification guide.*

**5. Missing / Excess Hardware.**

*Recheck hardware count as per the part list.*

**6. Product not installing properly.**

*Ensure make model year, cab length and bed size of your vehicle is listed in the application. All installation steps are followed correctly.*

**Check out these other TrailFX Products!!**

**www.TrailFX.com**



**BULL BAR**



**GRILLE GUARDS**



**BED RAILS**



**RUNNING BOARDS**



**RUNNING BOARDS**

*(KAO) warrants this product to be free of defects in material and workmanship at the time of purchase by the manufacturer. KAO does not warrant any other warranties, express or implied, including the warranty of fitness for a particular purpose or an implied warranty of merchantability. If the product is found to be defective, KAO may replace or repair the product at our option, when the product is returned prepaid, and the return is due to a manufacturing defect. Improper installation, or misuse of this product voids the warranty. KAO's liability is limited to repair or replacement of the defective product, and specifically excludes liability for any incidental or consequential loss or damage.*