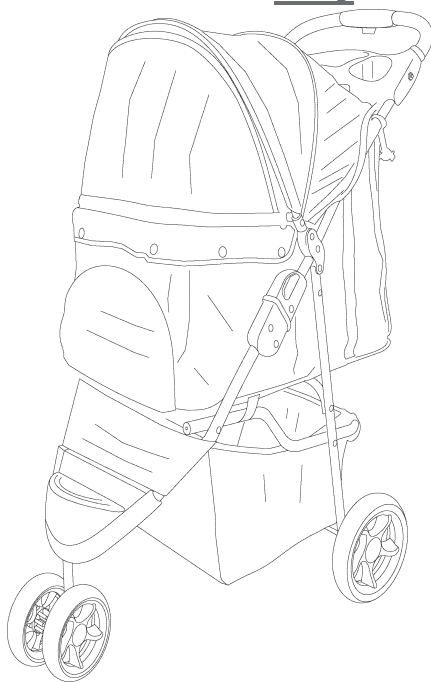


PET STROLLER

Installation instructions

For Pets Only

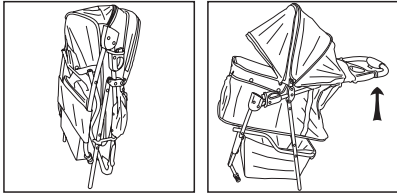


This is not a toy. Under no circumstances should this pet stroller be used by or for children.
Esto no es un juguete. Bajo ninguna circunstancia este artículo debe ser utilizado por o para niños.

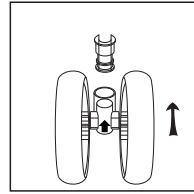
Components:



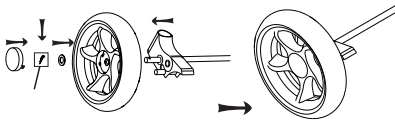
Assembly:



1. Release the red locking latch, unfold the stroller upwards and make sure both locks snap into place.

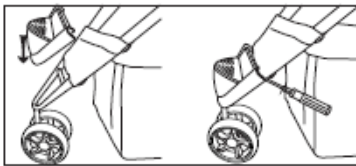


2. To install the front wheel, follow the direction of the arrow insert wheel onto the leg until you hear a "click" .

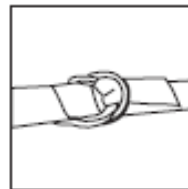


3. Insert each rear wheel onto the axle first, attach a washer then slide the pin on the axle as picture shown. To complete cover with the wheel cap.

4. Now attach the rear wheels on the rear legs, until you hear the "click".



5. Attach the foot board by positioning it to the bottom, then snap it into place.

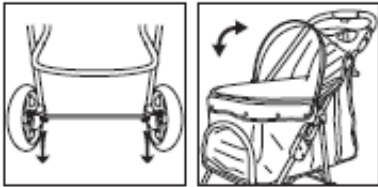


6. Next you'll connect the hook and loop strap around the horizontal pole to attach the storage basket.



7. Along the back of the basket will be a portion that will attach to the horizontal pole by snapping it into place.

Brake and Canopy Functions:



1. Brake: Step the brake down to stop the stroller. Lift up to release the brake.
2. Canopy: open and fold the canopy as shown in the picture.

Folding the Stroller:



1. Unzip the canopy window then press the folding button to fold the stroller and fasten the folding hook.

WARNING

- This is not a toy. Under no circumstances should this pet stroller be used by or for children.
- Not intended to be used as a restraining device for aggressive animals.
- Do not leave your pet unattended while in the stroller.
- Do not use near an open or exposed flame.
- Do not leave pet unsupervised in stroller.
- This stroller is designed for one pet only. Do not place more than one pet in the stroller.
- Do not hang bags from handles, this could cause the stroller to become unstable.
- Do not use on escalator or stairs; always fold the stroller and carry it.
- Put on the brake whenever you park the stroller.
- Ensure stroller is completely vertical and check that all locks are engaged before placing pet in stroller.
- Do not exceed the maximum weight of 33 lbs.
- Failure to follow these warnings and the instructions could result in serious injury or death.

**THIS PAGE
INTENTIONALLY
LEFT BLANK**