



Operator's Manual

TX210

UTV Jump Seat



OMTX210
Rev. Date 9/17/10
© 2010 Ardisam, Inc.
All Rights Reserved.

Yutrax offers a full line of Engineered Outdoor Gear. We appreciate your purchase of our world class UTV Jump Seat. Follow these few simple instructions and your product will be sure to give you many years of trouble free pleasure. Instructions should be kept in a safe place and reviewed at least annually.

If for any reason you have a problem with your product, **DO NOT return to the retailer**, contact the Yutrax customer service department M-F from 8 a.m. to 5 p.m. at 800-345-6007 for assistance.

ASSEMBLY INSTRUCTIONS:

Tools needed – two 7/16" wrenches, two 1/2" wrenches, 21/64" drill bit

IMPORTANT ASSEMBLY TIP: Do not tighten any nut and bolt combinations completely until all parts are assembled together! Finger tighten plus one turn of a wrench only! This will temporarily hold the lock nut on the bolt while helping alignment of all parts! After all parts are assembled together, all nut & bolt combinations can be completely tightened.

NOTE: This UTV Jump Seat was universally designed to fit most brands of UTV's.

1. Study and measure the width of your UTV box. This UTV Jump Seat has been designed to fit most brands of UTV's. The upright frames (A682) can be mounted at 26", 28" or 30" widths. **DO NOT tighten all nut & bolt assemblies completely!**

NOTE: There are multiple hole locations in backrest frame, seat stop tube and seat frame.

It all depends on the mounting positioning of Jump Seat in relation to your UTV box. Study your UTV box to determine the best mounting locations that will not interfere with any frame rails of the UTV.

2. Attach the backrest frame (A681) to the two upright frames using (4) provided 1/4-20 x 2" hex head bolts, 1/4" steel washers, and locknuts. **SEE FIGURE 1A.**
3. Attach the two seat belt receivers (48798) to the two upright frames using (2) provided 5/16-18 x 1-3/4" hex head bolts, (6) 5/16" steel washers, and locknuts. **SEE FIGURE 1B.** Receivers should both be mounted on what would be the "outer" sides of the upright frames when unit is completely assembled.

⚠ WARNING

READ, UNDERSTAND AND FOLLOW ALL ASSEMBLY, INSPECTION, MAINTENANCE & USE INSTRUCTIONS PROVIDED BEFORE EACH USE. FAILURE TO FOLLOW ALL WARNINGS AND INSTRUCTIONS COULD RESULT IN SERIOUS INJURY OR DEATH.

BE SURE TO FOLLOW ALL INSTRUCTIONS PROVIDED. IF ANY INSTRUCTIONS ARE NOT UNDERSTOOD OR IF YOU HAVE A PARTS ISSUE CALL 800-345-6007 BEFORE USING.

DOUBLE CHECK ASSEMBLY STEPS TO BE CERTAIN YOU HAVE CORRECTLY ASSEMBLED THIS PRODUCT.

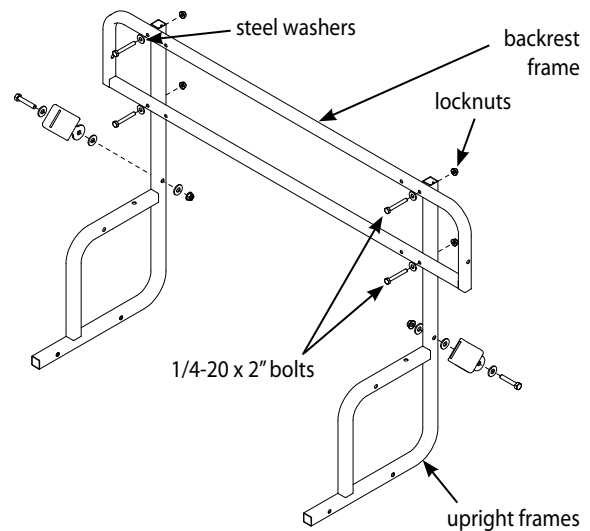


Figure 1A

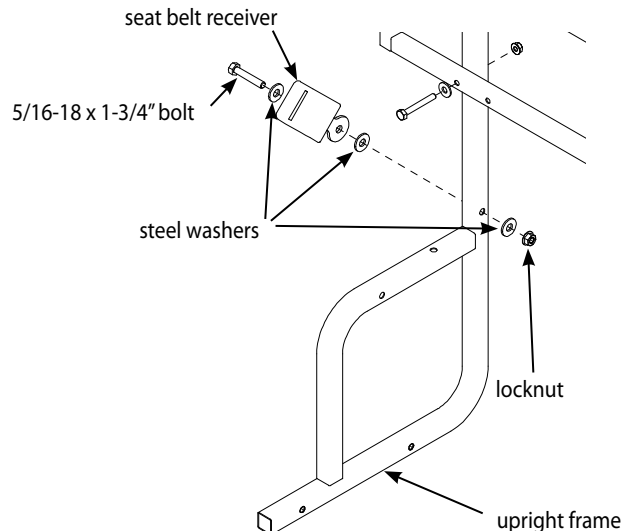


Figure 1B

4. Attach the seat stop tube (A684) to the top side of upright frames using (2) provided 1/4-20 x 2-1/4" hex head bolts, locknuts and 1/4" steel washers. **SEE FIGURE 2A.**
5. Attach the two seat pivot tubes (A683) to the "inside" of the upright frames using (2) provided 1/4-20 x 2-1/2" hex head bolts, locknuts and (6) 1/4" steel washers. **SEE FIGURE 2B.**
6. Attach the seat frame (A678), mesh side up, to the top of previously mounted seat pivots using (4) provided 1/4-20 x 2-1/4" hex head bolts, locknuts and 1/4" steel washers. **SEE FIGURE 2B.**

NOTE: Mount the seat frame so the hole in the side of frame are towards the front of the unit, away from the backrest.

7. Attach the two armrests (A685) to the outside of backrest frame using (2) provided 1/4-20 x 2" hex head bolts, locknuts and (4) 1/4" steel washers. **SEE FIGURE 3.**

NOTE: Mount the longer side of armrests to the backrest.

8. Place spring lock pin through each armrest, into the seat frame and securely latch. **You may now tighten all nut & bolt assemblies. Be sure not to over tighten or crush tubing when tightening!**

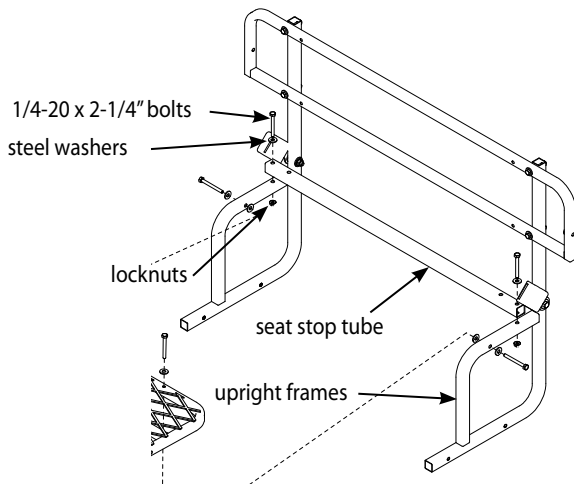


Figure 2A

⚠ WARNING

BE CERTAIN SPRING LOCK PINS ARE LATCHED TO PREVENT ACCIDENTAL REMOVAL.

BE SURE TO PERIODICALLY CHECK ALL NUT AND BOLTS FOR TIGHTNESS. OVER TIME, NUTS AND BOLTS MAY BECOME LOOSE FROM VIBRATION.

BE SURE YOUR SLIP KNOT IS CORRECTLY AND SECURELY ATTACHED.

NEVER MOUNT THE JUMP SEAT TO THE REAR OF THE UTV BED, NEAR THE TAILGATE. ALWAYS MOUNT IT TO THE FRONT END OF UTV BED, FACING THE REAR OF THE UTV WITH BACKREST AGAINST UTV CAB.

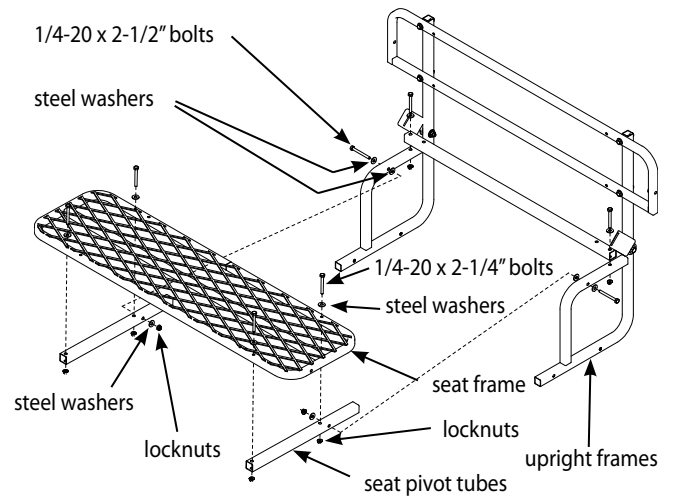


Figure 2B

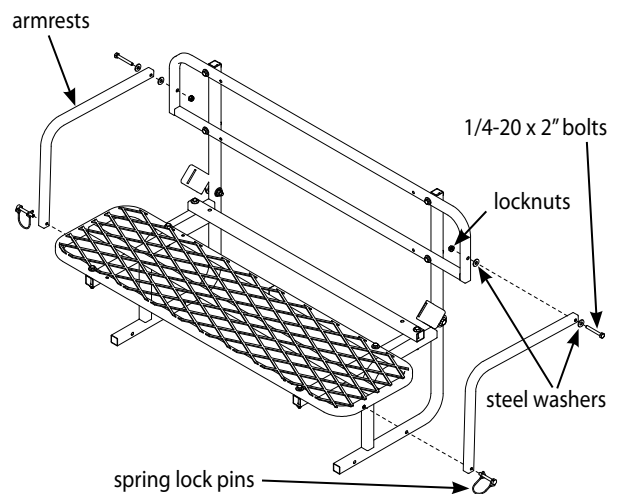


Figure 3

9. Attach the seat belt strap (48815) to the seat stop tube by wrapping around the seat stop tube, forming a loop, and threading both ends of the seat belt strap through the loop. Pull each end of the strap tight. This action forms a slip knot, which should be made in the center of the seat belt strap. This permanently attaches the seat belt strap to the Jump Seat. You may temporarily buckle the male ends to the seat belt receivers. **SEE FIGURES 4A & 4B.**
10. Attach the two mounting channels (A686) to the bottoms of upright frames using (4) provided spring lock pins. **SEE FIGURE 5. Be sure to latch the lock pins securely.** Place the assembled Jump Seat with channels attached into the bed of the UTV. With the Jump Seat facing the back of the vehicle, and backrest against the cab of UTV, mark the 4 locations to drill holes for permanent attachment of the channels. Remove Jump Seat after hole locations are marked.
11. Using a 21/64" drill bit, drill the 4 marked locations in the bed of UTV.
12. Attach the mounting channels to the UTV bed using (4) provided 5/16-18 x 1" or 5/16-18 x 1-1/4" or 5/16-18 x 1-3/4" hex head bolts, 5/16" steel washers, large fender washers and locknuts. **SEE FIGURE 5. Tighten securely!** Reattach the Jump Seat to the channels using the provided spring lock pins.

⚠ WARNING

NEVER ATTACH THE JUMP SEAT FACING FORWARD, TOWARDS THE CAB. ALWAYS MOUNT IT FACING THE REAR OF THE UTV.

BE CERTAIN SPRING LOCK PINS ARE LATCHED TO PREVENT ACCIDENTAL REMOVAL.

NEVER USE THE JUMP SEAT WITH OUT THE SAFETY CAM STRAPS SECURED CORRECTLY.

TEST THE STRAPS TO BE SURE YOU HAVE THREADED THE STRAP THROUGH THE CAM BUCKLE IN THE CORRECT DIRECTION.

DOUBLE CHECK TO BE SURE LATCH ON TILT BED OF UTV IS SECURED CORRECTLY. NEVER UNLOCK THE BED LATCH WHILE PASSENGERS ARE SEATED ON JUMP SEAT.

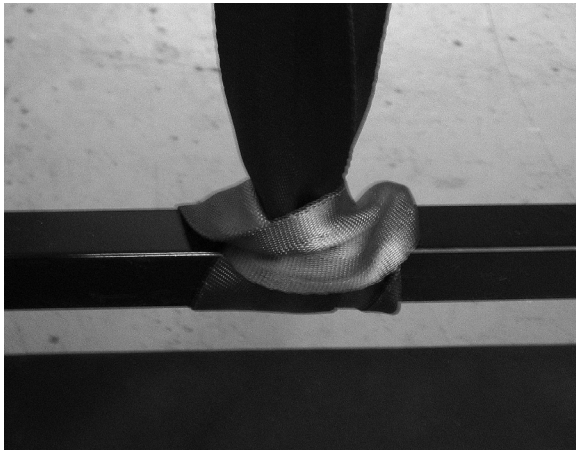


Figure 4A



Figure 4B

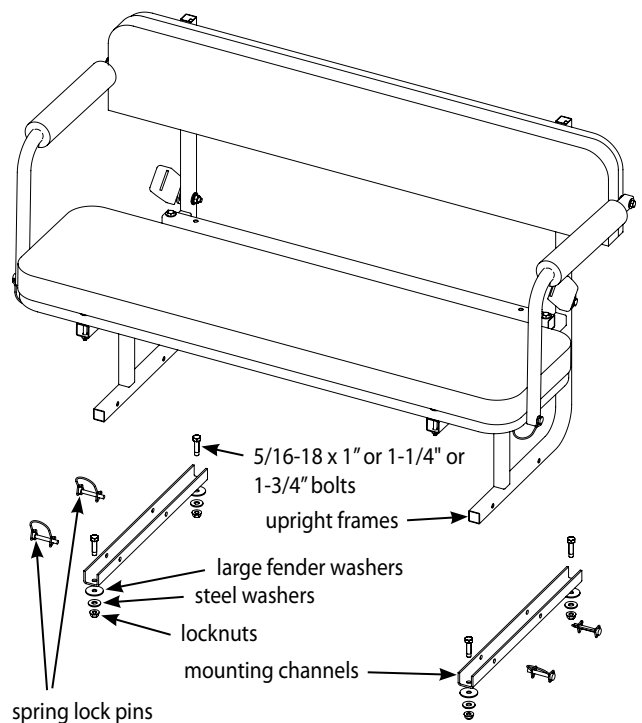


Figure 5

13. a. With entire unit fixed to the UTV, secure the Jump Seat to the UTV frame using the (2) safety cam straps (48851) provided. Wrap the loop end of the short strap around the upright frame, just below the welded joint. Thread the cam buckle through the sewn loop and pull tight forming a slip knot. This action makes it permanently attached. Repeat for opposite side of Jump Seat.
 - b. Wrap the loop end of the long strap around the frame of the UTV. Thread the long tail through the sewn loop and pull tight forming a slip knot. This action makes it permanently attached. This strap must be attached in an area where the strap will not slide. It must be able to be attached and stay in a stationary location. **SEE FIGURE 6 FOR POSSIBLE MOUNTING LOCATION.** Repeat for opposite side of Jump Seat.
 - c. Thread the long strap through the cam buckle by pressing lever and pulling through. Pull the long strap tight. Repeat for opposite strap.
14. Attach the padded seat to the top side of seat frame and snap the side release buckles together. Pull straps tight so seat is not loose. Attach padded backrest to backrest frame and secure with Velcro.
15. You will find a side release buckle with a short strap and long strap sewn to it. Take the short strap and wrap the loop end of strap around the rim of the seat frame (center of the front side). Thread the release buckle through the sewn loop and pull tight forming a slip knot. This action makes it permanently attached. Do the same for the long strap, by attaching it to the center of bottom rail on backrest frame. Pull the strap tight. This feature secures the seat in the flip up position if desired. **SEE FIGURE 7.**

NOTE: In order to flip seat up, you must remove the spring lock pins from the armrests. Armrests will pivot back freely.
16. Attach the (2) provided 9" arm pads to the armrests by wrapping around tubing and securing Velcro together.

⚠ WARNING

NEVER USE IN EXCESS OF 10 MPH WHILE PASSENGERS ARE RIDING IN THIS UTV JUMP SEAT. WHEN PASSENGERS ARE IN THE UTV JUMP SEAT, YOU SHOULD ONLY USE YOUR UTV FOR TRAIL RIDING, NOT HIGH SPEEDS.

RIDERS MUST BE 18 YEARS OF AGE OR OLDER.

NEVER DRIVE ON UNEVEN TERRAIN. WEIGHT LOADS CAN SHIFT CAUSING YOU TO LOOSE CONTROL OF YOUR UTV. DRIVE ON LEVEL TERRAIN ONLY.

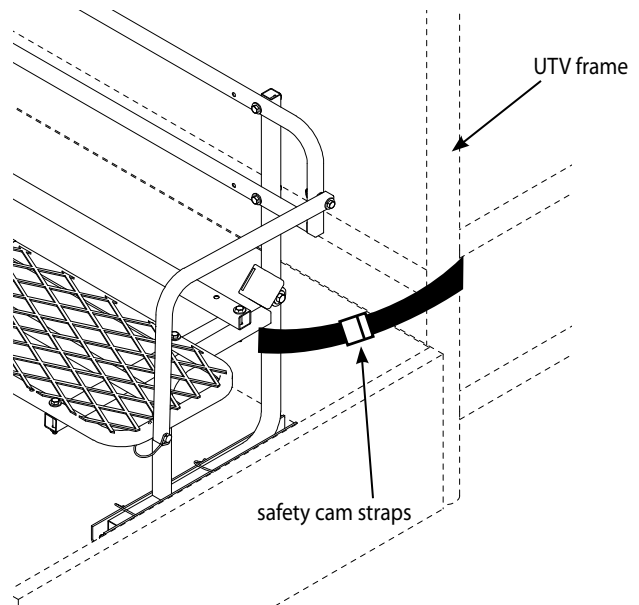
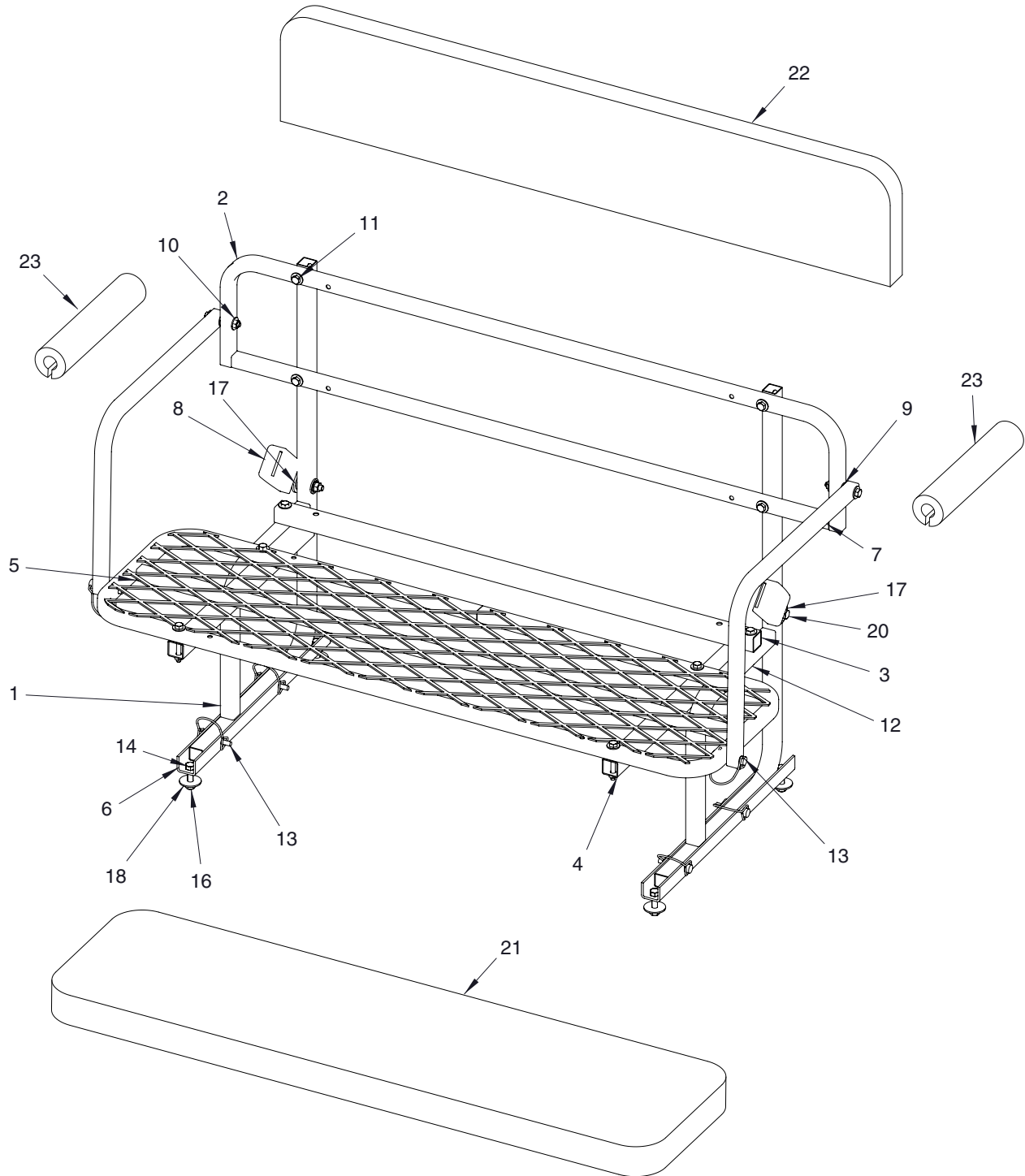


Figure 6



Figure 7

JUMP SEAT PARTS





JUMP SEAT PARTS LIST

KEY #	PART #	DESCRIPTION	QTY.
1	A682	UPRIGHT FRAME	2
2	A681	BACKREST FRAME	1
3	A684	SEAT STOP	1
4	A683	PIVOT SEAT	2
5	A678	SEAT FRAME	1
6	A686	CHANNEL MOUNT	2
7	A685	ARM REST	2
8	48798	RECEIVER, SEAT BELT	2
9	48261B	WASHER, BLK 1/4"	20
10	48752B	NUT, FLANGED, TOP LOCK 1/4-20	14
11	48153B	BOLT 1/4-20 X 2 HHCS BLK ZN P-T	6
12	48271B	BOLT, HHCS, GR5 BLK 1/4-20 X 2-1/4"	6
13	48017	SPRING LOCKPIN, ROUNDED RETAINER 1/4 X 2"	6
14	1401B	BOLT, HHCS GR5 BLK 5/16-18 X 1-1/4"	4
15	1921333	BOLT, HHCS GR5 5/16-18 X 1"	4
16	48753B	NUT, HEX FLANGED TOP LOCK BLK 5/16-18	6
17	WF516B	WASHER, FLAT 5/16" STANDARD	10
18	1960044	WASHER, FLAT .33 ID X 1.25 OD X .07 THK	4
19	48270B	BOLT, HHCS GR5 BLK 1/4-20 X 2-1/2"	2
20	8655B	BOLT, HH BLK 5/16-18 X 1-3/4"	6
21	200302	SEAT, PADDED	1
22	200303	BACKREST, PADDED	1
23	200304	ARMREST PADDED BLACK 9"	2
--	48815	SEAT BELT STRAP	1
--	48851	SAFETY CAM STRAP	2
--	48828	STRAP ASSEMBLY, FEMALE	1
--	48829	STRAP ASSEMBLY, MALE	1

ALWAYS...

- Use as a UTV Jump Seat only.
- Inspect before each & every use to be sure there is no product damage or loose/missing bolts & hardware.
- Keep body extremities inside of UTV bed.
- Wear seat belts while seated in the jump seat.

NEVER...

- Use a damaged UTV Jump Seat.
- Drive in excess of 10 MPH while passengers are in this UTV Jump Seat. Only use for trail riding when passengers are in UTV Jump Seat.
- Drive on hilly terrain- weight loads can shift.
- Attach the Jump Seat facing forward, towards the cab. Always mount it facing the rear of the cab.
- Mount the Jump Seat to the rear of the UTV bed, near the tailgate. Always mount it to the front end of UTV bed, facing the rear of the UTV with backrest against UTV cab.
- Use when intoxicated or using over-the counter medication or prescription drugs.
- Use more than two passengers.
- Use carelessly- Think Safety!

WARRANTY

Yutrax, a division of Ardisam Incorporated, offers a one year limited warranty to be free from defects in materials and workmanship for the service life of the product, not to exceed twelve consecutive months from the date of purchase. This warranty applies to the original owner with a proof of purchase and is not transferable. This warranty applies only to products which have not been subjected to negligent use, misuse, alteration, accident or if repairs have been made by anyone outside our factory. This warranty supersedes all other warranties either expressed or implied and all other obligations or liabilities on our part. Ardisam, Inc., does not assume, and does not authorize any other person to assume for us, any liability in connection with the sale of our products. Warranty work must be sent directly to Ardisam, Inc. or one of our authorized service centers and performed by them. **To obtain warranty service and/or replacement instructions, you must have prior approval from Ardisam, Inc. before shipping your package to us by calling our customer service department at 800-345-6007 or by writing to: Ardisam, Inc., P.O. Box 666, 1690 Elm Street, Cumberland, WI 54829 for a return material authorization number (RMA#).** All items must be shipped prepaid. Ardisam, Inc. will at no charge, repair or replace, at their discretion, any defective part which falls under the conditions stated above. Ardisam retains the right to change models, specifications and price without notice.

For replacement parts, phone 800-345-6007 or go online to www.GetYukonTracks.com.



YUTRAX™, Division of Ardisam, Inc.
1160 8th Avenue, PO Box 666
Cumberland, WI 54829
800-345-6007 | Fax 715-822-2223
Email: info@ardisam.com

Check for parts online at www.yutrax.com or call 800-345-6007 M-F 8-5 CST