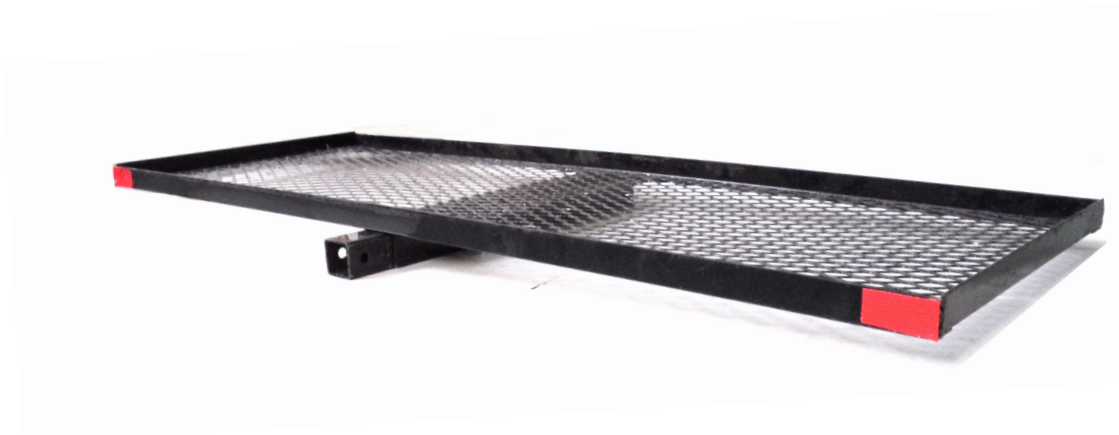


# TRAVELLER®

Distributed By:  
TRACTOR SUPPLY COMPANY  
200 POWELL PLACE  
BRENTWOOD, TN 37027  
For customer support ,call 1-888-376-9601  
[www.TractorSupply.com](http://www.TractorSupply.com)  
MADE IN CHINA

## ONE PIECE CARGO CARRIER



INSTALLATION INSTRUCTION

SKU#:0189155

## USER MANUAL

READ ALL INSTRUCTIONS CAREFULLY BEFORE USE

### CAUTION

1. Do not load any flammable products on the cargo carrier.
  2. Only non-flammable tarps should be used for securing cargos.
  3. Check all nuts, bolts and pins are fully tightened prior to use.
- Always ensure all goods are evenly distributed & firmly secured.

### MATERIAL LIST

Part NO.	Description	Quantity
①	1/2-13x3 1/2 grade 5 hex head bolt	2
②	1/2-13 nylon insert lock nuts	2
③	1/2 flat washers	4
④	2" square receiver tube	1
⑤	bent pin and cotter pin	1

### ASSEMBLY INSTRUCTIONS

1. Lay unit face down on a flat, even surface.
2. Mount receiver tube between angles in the center of carrier.
3. Insert 1 flat washer on each bolt.
4. Insert each bolt through angle and tube.
5. Install flat washer on each bolt.
6. Install locking nut on each bolt.
7. Tighten nuts securely to make sure angle is tight against tube.
8. Turn unit over.
9. Install one bent pin and cotter pin for upright securing.

