



INSTALLATION INSTRUCTIONS

Tough Country Products
1101 N. Blue Creek Rd
El Campo, TX 77437
Phone: 1-877-44TOUGH
Fax: 979-543-7209



2019-2021 DODGE 2500-5500

FRONT REPLACEMENT

DFR1934D, TFR1934D, AFR1934D

FACTORY BUMPER REMOVAL:

1. Open hood and disconnect the negative terminal from the battery.
2. If applicable, disconnect the negative terminal from the auxiliary battery.
3. If applicable, disconnect the factory wiring harness from the inside of the driver side wheel well.
4. Remove two bolts from tow hooks and remove tow hooks from frame.
5. Remove the two factory bumper bolts that hold the factory bumper to the frame rail from each side and remove bumper.
6. If applicable, disconnect and remove fog lights from housing from factory bumper.
7. If applicable, remove harness, sensors and plugs from factory bumper.

REPLACEMENT BUMPER INSTALLATION:

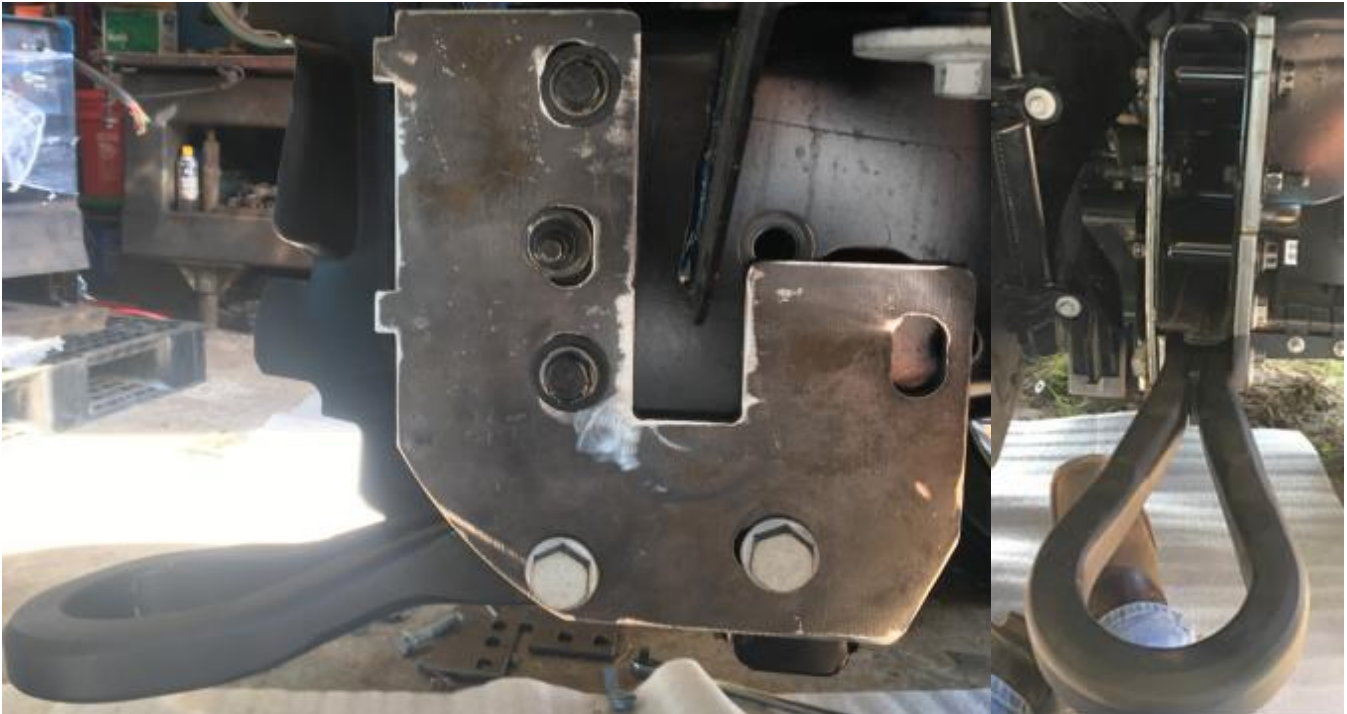
1. If applicable, install fog lights into the correct supplied brackets with supplied hardware and mount to the bumper.
2. If applicable, install harness, sensors and plugs into the bumper.
3. Install support bracket to the outside of the frame using factory hardware in the top and bottom holes. Hand tighten for now.
4. If applicable, relocate factory tow loops to the bottom two holes on the support bracket using factory hardware. Put ¼" spacer in between tow loop and the ¼" smash plate (this will be on the inside of the frame) and hand tighten for now. (See picture below for reference.)
5. Using provided hardware secure middle hole and back hole (4500-5500 will not use back hole). Hand tighten for now. (See picture below for reference.)
6. Hand tighten bumper to support brackets.
7. Align and position bumper to desired location and tighten all support bracket tow loop and bumper hardware.

See Pictures for reference.

Here are the 2500-3500 Pictures to help with installation. (Passenger side)



Here are the 4500-5500 Pictures to help with installation. (Driver side)



THANK YOU FOR CHOOSING TOUGH COUNTRY PRODUCTS