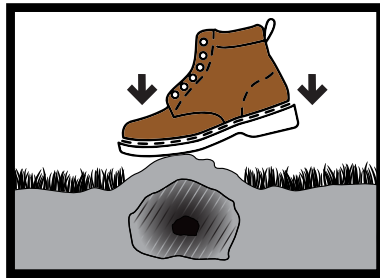


SETTING THE TRAP

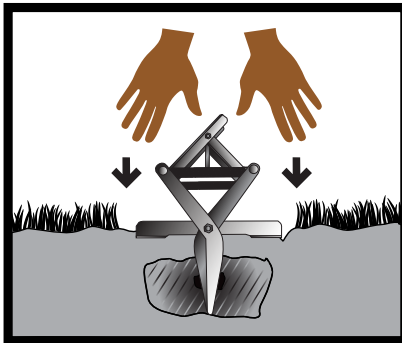
1



FEEDING TUNNEL

Locate any active mole feeding tunnel and depress a small section of the tunnel with your foot. Feedings tunnels can appear frequently, and moles often travel through the same tunnels as they feed on grubs and earthworms.

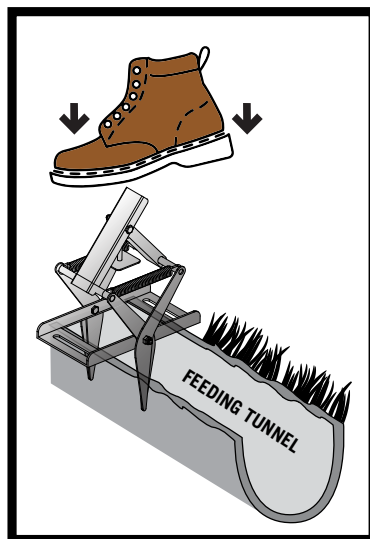
2



FEEDING TUNNEL

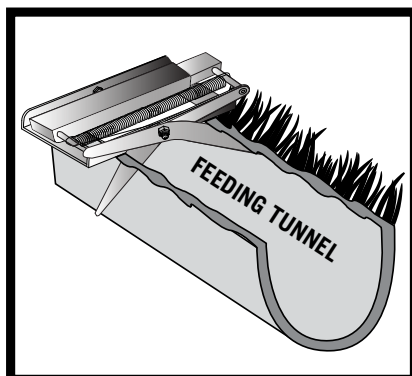
Place the trap over top of the depression of the tunnel with the scissors of the trap on either side. Press the trap firmly into the ground until the square base plate is resting on the ground outside of the tunnel.

3



Step down firmly on the top of the trap, opening the scissors underneath the ground, and setting the square trigger disk flat on the depression of the tunnel.

4



The trap will lock into place parallel to the ground once fully set. Rock the trap back and forth with your foot to set the track for the scissors to close freely.