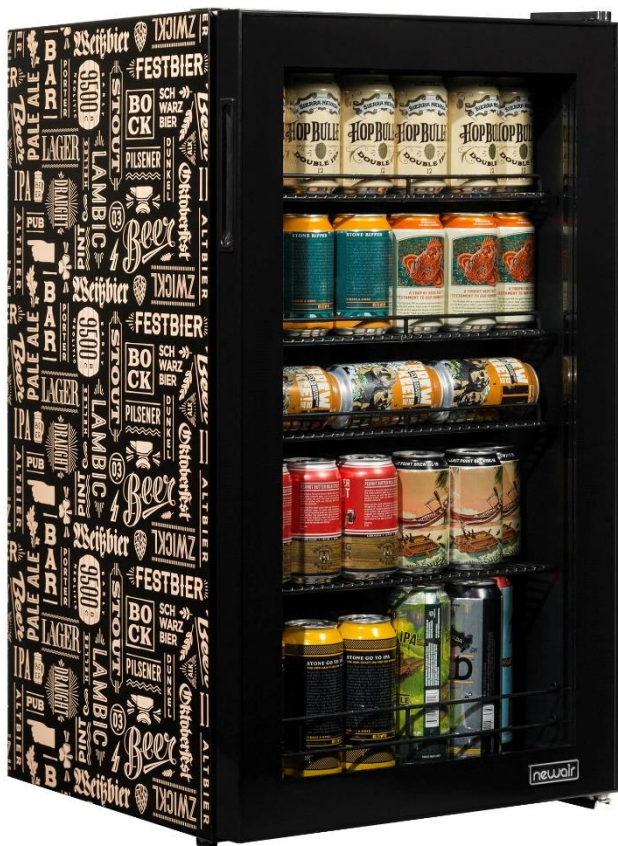


newair®

AB-1200BC1

“Beers of the World” Custom Designed Beer Fridge



OWNER'S MANUAL

Read and save these instructions.



Intertek

Manual v1.3

READ AND SAVE THESE INSTRUCTIONS

TABLE OF CONTENTS

Specifications	2
Register Your Product Online.....	3
Safety Information & Warnings	4
Quick Start Guide	9
Assembly & Installation	13
Operating Instructions	13
Cleaning & Maintenance.....	16
Troubleshooting.....	19
Limited Manufacturer's Warranty	20

SPECIFICATIONS

MODEL No.:	AB-1200BC1
VOLTAGE:	110-120V
CURRENT:	1.3A
FREQUENCY:	60Hz
POWER CONSUMPTION:	85W
BOTTLE CAPACITY:	126 cans
STORAGE CAPACITY:	3.5 cu ft
TEMPERATURE RANGE:	37°F - 65°F
REFRIGERANT:	R600a (0.88 oz)
PRODUCT DIMENSIONS:	18.70"D x 18.50"W x 32.50"H

REGISTER YOUR PRODUCT ONLINE

Register Your NewAir Product Online Today!

Take advantage of all the benefits product registration has to offer:



Service and Support

Diagnose, troubleshoot, and service issues faster and more accurately



Recall Notifications

Stay up to date on safety issues, system updates, and recall notifications



Special Promotions

Opt-in for NewAir promotions and offers

Registering your product information online is safe & secure and takes less than 2 minutes:

newair.com/register

Alternatively, we recommend you attach a copy of your sales receipt below and record the following information, which is located on the manufacturer's nameplate on the rear of the unit. You will need this information if it becomes necessary to contact the manufacturer for a service inquiry.

Date of Purchase: _____

Serial Number: _____

Model Number: _____

SAFETY INFORMATION & WARNINGS



When using any electrical appliance, basic safety precautions must be followed in order to reduce the risk of fire, electrical shock and/or injury to persons or property. Be sure to read all instructions before using this appliance and observe the following safety tips:

Warning: Risk of Child Entrapment!

Before you throw away your old appliance: Take off the doors. Leave the shelves in place so that children may not easily climb inside. Cut the connection cable as close to the appliance as you can.

ELECTRICAL SAFETY AND CORD HANDLING

- Make sure your outlet voltage and circuit frequency correspond to the voltage stated on the appliance rating label. If this is not the case, contact the customer support line immediately.
- Do not use any other appliance at the same time on the same electrical circuit as it may overload the circuit and blow the fuse or circuit breaker.
- To protect against fire and electric shock, do not immerse the cord, plug, power base or the Retro Under Counter Fridge body itself in water or other liquid. Do not expose the electrical connections to water.
- Do not kink, bend, squash, strain or damage the power cord and always protect it from sharp edges and heat.
- Grip the plug when disconnecting, do not pull the cord.
- Do not pick or operate the appliance if the power supply cord or plug is damaged. If damage is observed, contact the customer support line for advice.
- A damaged cord or plug must be replaced by the manufacturer or a qualified person.
- Make sure all electrical connections are clean and dry before switching on.
- Do not use this appliance in conjunction with an extension cord.
- Make sure all electrical connections are clean and dry before switching on the appliance.

- Unplug the appliance from the power outlet when not in use and before cleaning, servicing, maintenance or moving the appliance.
- This appliance is not intended to be operated by means of an external timer or separate remote-control system.


USAGE CONDITIONS AND RESTRICTIONS


- This appliance is intended for domestic use only.
- This product is not intended for commercial use. Do not use it outdoors.
- Only use this refrigerator as described in this manual. Any other use is not recommended and may cause fire, electric shock or injury.
- Improper installation and the use of accessories not recommended by the appliance manufacturer may result in fire, electric shock or personal injury and will invalidate your warranty.
- We assume no responsibility for any damages caused by faulty use.
- This appliance is not intended for use by persons (including children) with reduced physical, sensory or mental capabilities, or lack of experience and knowledge, unless they have been given supervision or instruction concerning use of the appliances by a person responsible for their safety.
- Children should be supervised to ensure they do not play with the appliance.
- Close supervision is necessary when any appliance is used by or near children.
- Do not use chemicals, steel wool or abrasive cleaners to clean the outside of the unit, as these will scratch the metal surface.
- Do not operate the unit near liquids (kitchen sink, water basins, taps etc.).
- Ensure that all parts are correctly assembled before operation.
- Maintain the appliance in accordance with the instructions to ensure that it functions properly.
- If there is a product malfunction, or if it has been damaged in any way, call the after sales support for assistance.
- Immediately unplug the appliance if fire or smoke is emitted.
- Place the product on a straight, rigid, and stable surface, away from sources of direct sunlight or excessive heat.
- Do not place the product near heat sources such as radiators, heat registers, stoves or other appliances that produce heat.
- Do not place the product near other items that may damage it, such as naked flame sources (lit candles) or objects containing water (a vase or fish bowl).
- Clean up any spills on the unit. Verify no liquid has been spilled into any openings.


Prevent overheating: Place the product in a sufficiently aerated place. Ensure that air can circulate freely around the back of the refrigerator. To ensure the best performance, leave a distance of about 100mm to all sides of the fridge.

- This appliance features a short power cord to reduce the risk of being entangled, and to reduce the risk of tripping. An extension cord or longer detachable cord is not recommended for use with this product.
- There are no user-serviceable parts inside. Do not attempt to service this product. Please call our customer support team for instructions.

FLAMMABLE REFRIGERANT GAS WARNINGS

 **Caution!** Risk of fire or explosion. Flammable refrigerant used. Consult repair manual/owner's guide before attempting to service this product. All safety precautions must be followed.

 **Caution!** Risk of fire or explosion. Dispose of property in accordance with federal or local regulations. Flammable refrigerant used.

 **Caution!** Risk of fire or explosion due to puncture of refrigerant tubing; follow handling instructions carefully. Flammable refrigerant used.

- The refrigerant used in this unit is obutane (R600a), a gas with a high level of environmental compatibility, which is nevertheless flammable. It is contained within the refrigerant circuit of the appliance. During transportation and installation of the appliance, ensure that none of the components of the refrigerant circuit become damaged.

Warning: Do not damage the refrigerant circuit and never use an appliance with a damaged refrigerant circuit! If the refrigerant circuit becomes damaged, avoid proximity to open fires and all types of heat and ignition sources. Thoroughly ventilate the room in which the appliance is located.

- It is hazardous for anyone other than an authorized service person to service this appliance.
- The room for installing the appliance must be at least 11 square feet per 0.3oz of refrigerant. The amount and type of refrigerant in the appliance can be found in the Technical Specifications.

GENERAL SAFETY

Do not use other electrical appliances inside of refrigerating appliances, unless they are approved for this purpose by the manufacturer

- Do not store explosive substances such as aerosol cans with a flammable propellant in this appliance.
- During transportation and installation of the appliance, make certain that none of the components of the refrigerant circuit are damaged.
- Thoroughly ventilate the room in which the appliance is situated.
- It is dangerous to alter the specifications or modify this product in any way.
- Any damage to the cord may cause a short circuit, fire, and/or electric shock.

Warning: This appliance is heavy. Care should be taken when moving it. To avoid back or other injury, consider a two-person lift or mechanical aid when installing it. Failure to do so can result in back or other injury.

- Avoid prolonged exposure to direct sunlight
- This appliance is intended to be used in households only.

Warning: Do not use an extension cord.

- Any electrical components (plug power cord, compressor, etc.) must be replaced by a certified service agent or qualified service personnel
- Make sure that the power plug is not squashed or damaged by the back of the appliance. A damaged power plug may overheat and cause a fire.
- Before first use, it is advisable to wait at least eight hours before connecting the appliance to allow the oil to flow back into the compressor.
- Adequate air circulation should be allowed around the appliance. Inadequate air circulation leads to overheating. To achieve sufficient ventilation, follow the installation instructions included in this manual.
- The appliance must not be located close to radiators or stoves.
- Make sure that the main plug is accessible after installing the appliance.

DAILY USE

- Do not put hot food in the appliance.
- Store pre-packed food in accordance with the food manufacturers instructions.

Warning: Do not use mechanical devices or other means to accelerate the defrosting process. Never use sharp or metal instruments to remove frost or clean the appliance. Use a plastic scraper if necessary.

- If the refrigerator is unplugged, turned off or has lost power, wait 3 to 5 minutes before restarting the unit. If you attempt to restart before this time delay, the refrigerator will not start.

QUICK START GUIDE

UNPACKING THE APPLIANCE

- This product has been packaged to protect it against transportation damage. Remove all packaging materials from around and inside the appliance **but do not remove any foam insulation surrounding the pipes in the rear of the unit.**
- Keep the original packaging carton and materials in a safe place; doing so will help prevent any damage of the appliance when it is not in use. In the event that the carton is to be disposed of, please recycle all packaging materials where possible.
- Plastic wrapping can be a suffocation hazard for babies and young children, so ensure all packaging materials are out of their reach and disposed of safely.
- Check to ensure you have all the parts pictured on the previous page spread.
- Unwind the power cord to its full length and inspect it for damage. Do not use the appliance if the appliance or its cord have been damaged or are not working properly. **In case of damage, contact our customer support line for advice on examination, repair or return of the damaged product.**
- Make sure the refrigerator is disconnected from the power supply before cleaning the interior surfaces and all internal accessories with

lukewarm water, a soft cloth, and a mild detergent. This will remove any dust from transit and storage and help remove the typical smell of a brand new product. Then dry thoroughly.



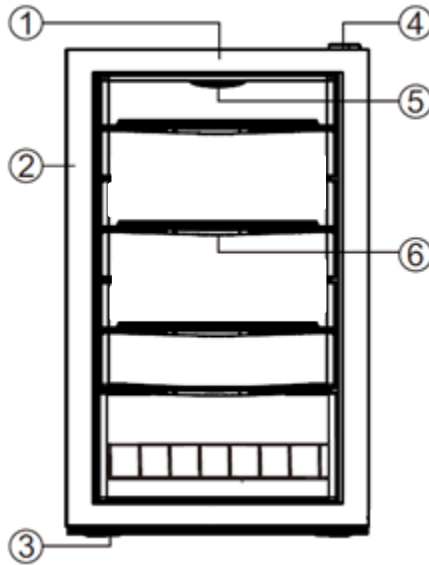
Important: Do not use harsh or abrasive detergents or powders as these will damage the finish.

PARTS DIAGRAM

When you receive your unit, carefully remove the exterior and interior packaging. It is recommended that you retain the packaging for future use.

Check to make sure the following parts are included:

- 4 Shelves, 1 extra SplitShelf
- 1 Instruction Manual



- | | |
|-------------------------------------|---------------|
| 1. Temperature Controls
(Inside) | 4. Door Hinge |
| 2. Door Frame | 5. LED Light |
| 3. Fridge Foot (x4) | 6. Shelf |

ASSEMBLY & INSTALLATION



Before connecting the appliance to a power source, let it stand upright for approximately 24 hours. This will reduce the possibility of a malfunction in the cooling system from handling during transportation.

This beverage fridge is a freestanding unit and should not be built into surrounding cabinetry. Allow for proper air clearance around the fridge. The recommended clearances are as follows:

Sides: 4.5"

Top: 4"

Back: 4"

Before operating your beverage fridge for the first time, follow these steps:

1. Allow the unit to sit upright for 24 hours prior to first use. Upon the first use, allow the unit to sit at the desired temperature for at least 30 minutes before changing settings or filling it with drinks.
2. Clean the interior surface of the unit with warm water and a soft cloth.
3. Handle the unit with care. Do not apply force to any parts, such as the condenser or the door. The metal rails on the bottom of the unit may be sharp, so please use caution when moving the unit. Do not tilt the unit beyond 45 degrees or drag it across the floor.
4. Place the fridge on a level surface that will be strong enough to support the unit when it is fully loaded. To level your fridge, adjust the front feet located at the bottom of the unit. If the unit is not level, the doors and magnetic seal may not work properly. (Please note that placing your fridge on carpet may result in expelled heat fading the carpet.)
5. Install the fridge away from direct sunlight and heat sources such as stoves, heaters, or radiators. Direct sunlight may affect the unit's acrylic coating, and nearby heat sources can increase electrical consumption. Extreme cold or hot ambient temperatures may also prevent optimal performance.

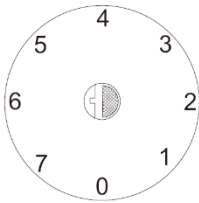
INSTALLING YOUR SPLIT SHELF

The top zone of the fridge comes with an adjustable split shelf configuration for your beverages, enabling you to have either a full-sized shelf or a half-sized shelf to accommodate different sized cans or bottles.

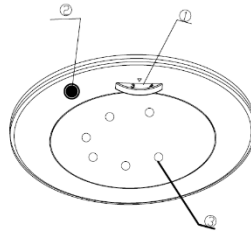
To install, simply remove the first shelf from the top zone of the fridge and replace with the included half-sized shelf.

OPERATING INSTRUCTIONS

TEMPERATURE ADJUSTMENT



1. Thermostat



2. Light Switch

3. Led Light

Your beverage fridge can be set to your desired temperature using the thermostat. The unit's temperature range is 37°F to 65°F (3°C to 18°C).

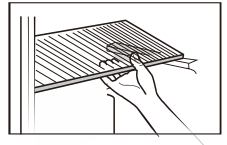
The temperature scale runs from 1, the warmest setting, to 7, the coldest setting. The 0 position is an OFF setting that can be used when the beverage fridge is standing empty.

OPTIMIZING PERFORMANCE

- To ensure maximum performance and efficiency, be sure to place your beverage fridge in an area where there is proper air circulation. (See *Assembly & Installation* for instructions on proper clearances.)
- For proper internal air circulation, do not overfill your beverage fridge. When storing beverages, keep them away from the rear wall. To allow free circulation of cold air, don't pack beverages too tightly on the shelves.
- Do not place the unit in direct sunlight.
- Do not place heated beverages in your fridge.
- Do not place heavy objects on top of the beverage fridge.
- Note that the unit will delay restarting for 3-5 minutes after losing power or being unplugged as a safety precaution.

FOOD STORAGE

- The fridge is suitable for short-term storage of fresh food. The temperature inside varies depending on the amount of food stored, the ambient temperature, and the frequency of door opening. Adjust the thermostat accordingly.
- In order to maintain good cooling efficiency and save energy, we recommend you do not open the door for too long or too often. Do not overload the fridge, and ensure there is enough space around items for cold air flow. Do not block ventilation openings.
- The walls of the fridge are equipped with a series of runners so that the shelves can be positioned to suit individual storage requirements.



CLEANING & MAINTENANCE

CLEANING YOUR FRIDGE

To clean your fridge:

- Unplug the fridge and remove anything inside. Clean accessories with soap and water—do not use a dishwasher.
- Wash the inside of the unit with a solution made of warm water and gentle detergent. Do not use abrasive cleaners.
- Use mild, soapy water to clean the unit's door seal.
- Thoroughly clean the back and bottom of the beverage fridge.
- To clean the outside of the unit, use a mild detergent and warm water. Dust the outside of the unit every 6 months.
- Allow all components to dry completely before returning to regular use.

DEFROSTING YOUR FRIDGE

To prevent ice buildup on the inside of the beverage fridge, it may be necessary to defrost occasionally:

1. Turn the temperature control to #4 or #5.
2. Wait 30 to 60 minutes.
3. Turn control knob back to #1 or #2.

If you notice an excessive amount of frost buildup inside the unit, follow these steps to remove it:

1. Unplug the beverage fridge.
2. Allow frost to melt from the inside of the fridge. If necessary, use a plastic utensil to scrape ice from the interior surface.
3. Dry thoroughly before plugging it in again.

GOING AWAY?

- **Short vacation:** Leave the fridge in operation during vacations of less than a month.
- **Long vacation:** If you are not going to use the fridge for longer periods, remove all food and unplug the power cord. Clean and dry the interior thoroughly. To prevent mold growth, leave the door open slightly. (Restrict children's access to the room with the open fridge to avoid creating a child entrapment risk.)

MOVING THE FRIDGE

- Unplug the fridge and remove all food from inside. Securely tape down the drawer and shelves and tape the door shut. Turn the leveling feet up to the base to avoid damage.
- **CAUTION: Never pick up the refrigerator by the door.**
- Protect the outside of the unit with a blanket or similar soft material and make sure the fridge stays secure in the upright position during transportation.

DISPOSAL OF OLD APPLIANCES

Be sure to make any locks unusable, remove any door(s), and dispose of the unit following local guidelines.



Warning – chemical hazard: Do not allow children to play with the old appliance. Contact your local authority for disposal procedures.

- Before disposing of an old appliance, please make sure it is switched off and secured. Unplug the appliance and break any locks in order to avoid children becoming trapped.
- **Please note:** Refrigeration system contains gas and refrigerants which require specialized waste disposal. Some vulnerable materials in a refrigerator are not damaged prior to disposal. You can contribute to environment awareness by insisting on an appropriate non-polluting method of disposal.

DISPOSAL OF PACKAGING



Do not allow children to play with the packaging. Dispose of plastic bags safely.

- The cardboard may be broken down or cut into smaller pieces and recycled. Any wrapping is made of polyethylene. The polyethylene pads and padding can be recycled.

TROUBLESHOOTING

Problem	Possible Causes	Solution
The beverage fridge does not cool.	The unit may be plugged into a wall unit using a different voltage.	Check if using the wrong voltage.
	The circuit breaker may be tripped or there is a blown fuse.	Reset the circuit breaker and check for a broken fuse.
The beverage fridge is not cold enough.	The external environment may require a higher setting.	Lower the temperature of the fridge.
	The fridge may be placed too close to a heat source.	Keep the fridge away from direct sunlight and other heat sources.
	There is insufficient ventilation.	Place the beverage fridge in an area with proper ventilation and clearances.
	The door is not completely closed or the door seal is not working properly.	Close the door tightly. Do not open the door frequently, and do not keep the door open for extended periods of time. Replace the seal on the door if necessary.
The beverage fridge seems to make too much noise.	The unit is not level.	Adjust the unit's feet and ensure the product is level.
	There is insufficient ventilation. The unit is too close to a wall or another surface.	Allow sufficient clearance around the unit.
An interior red light is flashing.	The temperature is set too low.	Adjust the temperature so that it is higher than the beverage fridge's interior temperature.

Problem	Possible Causes	Solution
Frost is building up in the unit.	There is excess humidity or the interior temperature is too low.	Turn off the beverage fridge, unplug it, and remove the frost buildup manually. Reconnect the power once the ice has thawed.

LIMITED MANUFACTURER'S WARRANTY

This appliance is covered by a limited manufacturer's warranty. For one year from the original date of purchase, the manufacturer will repair or replace any parts of this appliance that prove to be defective in materials and workmanship, provided the appliance has been used under normal operating conditions as intended by the manufacturer.

Warranty Terms:

During the first year, any components of this appliance found to be defective due to materials or workmanship will be repaired or replaced, at the manufacturer's discretion, and at no charge to the original purchaser. The purchaser will be responsible for any removal or transportation costs.

Warranty Exclusions:

The warranty will not apply if damage is caused by any of the following:

- Power failure
- Damage in transit or when moving the appliance
- Improper power supply such as low voltage, defective household wiring or inadequate fuses
- Accident, alteration, misuse or abuse of the appliance such as using non-approved accessories, inadequate air circulation in the room or abnormal operating conditions (extreme temperatures)
- Use in commercial or industrial applications
- Fire, water damage, theft, war, riot, hostility or acts of God such as hurricanes, floods, etc.
- Use of force or damage caused by external influences
- Partially or completely dismantled appliances
- Excess wear and tear by the user

Obtaining Service:

When making a warranty claim, please have the original bill of purchase with purchase date available. The purchaser will be responsible for any removal or transportation costs. Replacement parts and/or units will be new, re-manufactured or refurbished and is subject to the manufacturer's discretion.

For technical support and warranty service, please email support@newair.com