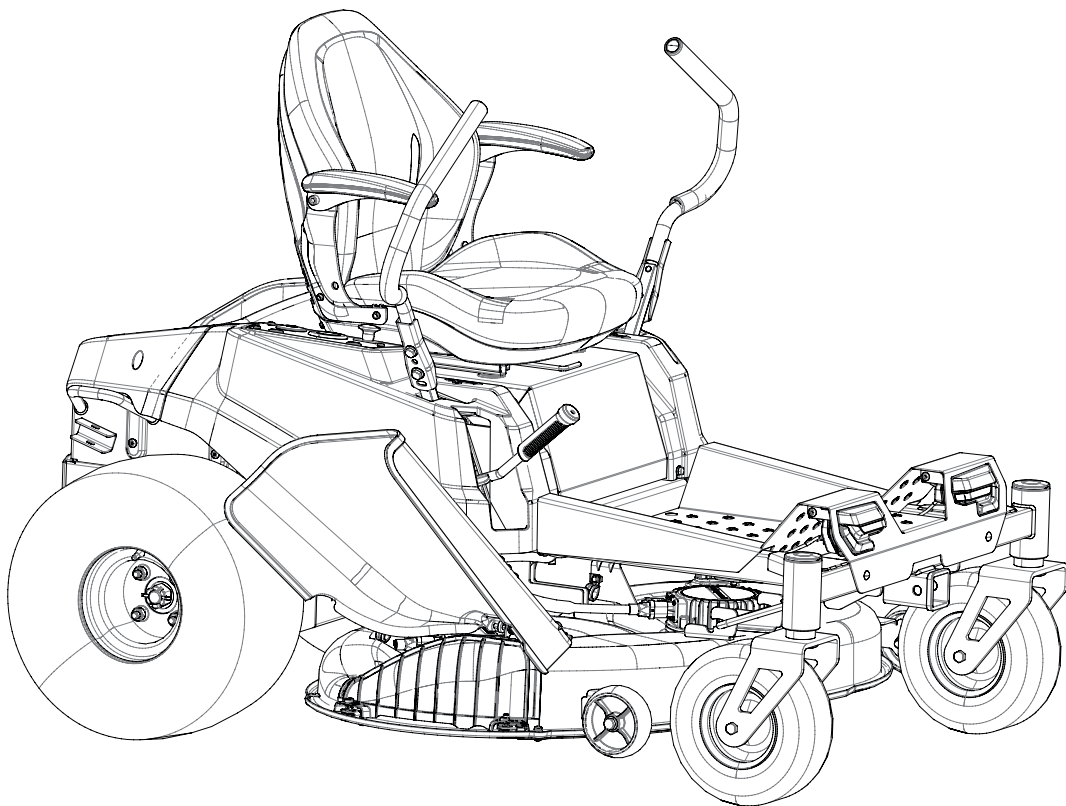


greenworks

proTM

CrossoverZ Zero Turn
6-in-parallel
Model No. CRZ426 CRZ428



Parts Manual with torque value

TOLL-FREE HELPLINE: 1-855-345-3934

www.greenworksools.com

 Read all safety rules and instructions carefully before operating this tool.

P0804055-00, Rev 3.0

CONTENTS

Labels

LABELS-WARNING/SAFETY.....	15
LABELS-BRAND/MODEL.....	16
LABELS-FUNCTION.....	17

Body and structures

FRAME.....	21
BATTERY COVER.....	22

Electrical System

BATTERY AND CHARGER.....	31
CONTROLLER MOUNT.....	32
WIRE HARNESS.....	33
SWITCHES&GAUGES.....	35
GPS.....	36
LIGHTS.....	39

Deck System

DECK, MOTORS, BLADES.....	41
DECK COMPONENTS.....	42
DECKLIFT.....	45
DISCHARGE CHUTE.....	46

Drive System

WHEELS.....	51
FRONT CASTER PARTS.....	52
DRIVE MOTOR AND TRANSMISSION.....	55

Operator System

SEAT AND MOUNT.....	61
CONTROL ARMS.....	63
CONTROL BOX RH.....	64
CONTROL BOX LH.....	65

NOTE: ILLUSTRATIONS MAY OR MAY NOT REPRESENT THE ACTUAL ASSEMBLIES AND IT IS NOT RECOMMENDED TO USE THIS MANUAL AS A GUIDE TO ASSEMBLE OR DISASSEMBLE THE MOWER.

LABELS-WARNING/SAFETY



15-1 (for 7409302)



15-1 (for 7409402)



15-1 (for 7409502)

⚠ DANGER FOR SAFE OPERATION, READ AND UNDERSTAND THE INSTRUCTION MANUAL. TO REDUCE THE RISK OF INJURY, ALWAYS WEAR EYE PROTECTION. STORE Indoors. DO NOT EXPOSE TO RAIN AND WATER. AVOID DIRECT SUNSHINE. DO NOT OPERATE ON INCLINES GREATER THAN 15°. MOW ACROSS THE FACE OF SLOPES, NEVER UP AND DOWN. BEFORE AND WHILE BACKING, LOOK BEHIND AND DOWN. NEVER CARRY CHILDREN OR ANYONE EVEN WHEN THE BLADES ARE OFF. KEEP CHILDREN OUT OF THE MOVING AREA AND UNDER THE WATCHFUL CARE OF A RESPONSIBLE ADULT OTHER THAN THE OPERATOR. PAY ATTENTION THAT BYSTANDERS ARE NOT INJURED THROUGH FOREIGN OBJECTS THROWN FROM THE MOWER. KEEP ALL BYSTANDERS AT LEAST 100 FT. AWAY. DO NOT REACH HANDS OR FEET UNDER MOWER DECK. TO REDUCE THE RISK OF ELECTRIC SHOCK, DO NOT EXPOSE TO RAIN, WATER OR EXCESSIVE MOISTURE. STORE Indoors. TO REDUCE THE RISK OF FIRE, EXPLOSION AND/OR BURNS, INCLUDING CHEMICAL BURNS, DO NOT DISASSEMBLE, CRUSH, HEAT ABOVE 212° F, EXPOSE TO FIRE OR INCINERATE.

15-2



15-3



15-4



15-5

⚠ DANGER
 -Never pull the neutral bypass lever outside when the machine is working on the slope!
 -Never drive mower with the neutral bypass knob working!

15-6

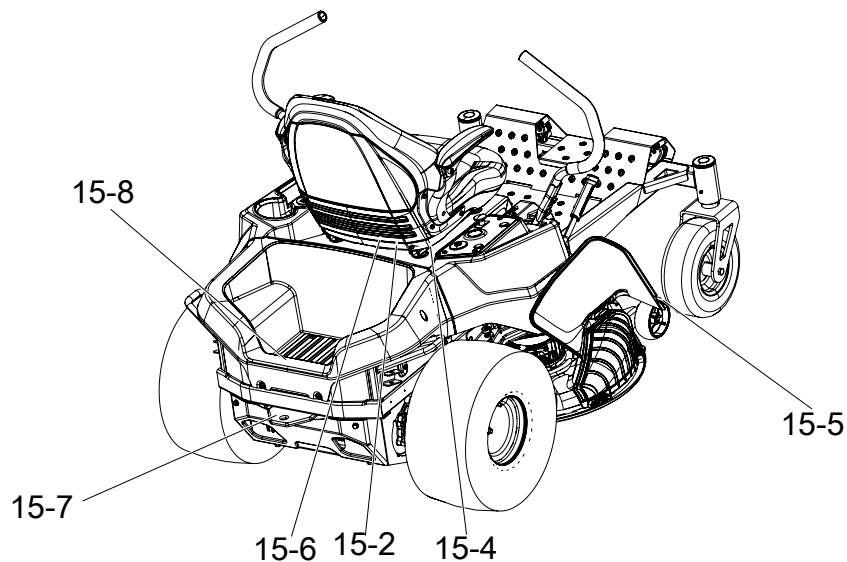
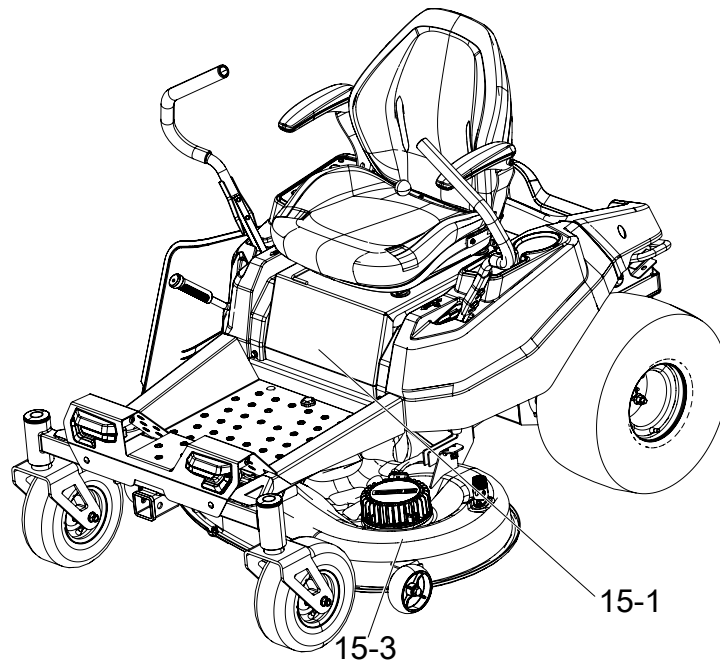
⚠ MAX TOWING WEIGHT 300lbs ⚠

15-7

⚠ MAX LOADING WEIGHT 200lbs ⚠

15-8

ITEM NO.	PART NO.	DESCRIPTION	QTY
	R0203310-00	CrossoverZ Zero Turn 6-in-parallel 60V safety label	1
15-1	R0203311-00	CrossoverZ Zero Turn 6-in-parallel 80V safety label	1
	R0203422-00	CrossoverZ Zero Turn 6-in-parallel 82V safety label	1
15-2	R0201623-00	Warning label	1
15-3	R0202922-00	No standing label	1
15-4	R0201625-00	CP65 label	1
15-5	R0201627-00	Keep H/F away	1
15-6	R0203316-00	Bypass label	1
15-7	R0203317-00	Weight limit label 300lbs	1
15-8	R0203313-00	Load-bearing label	1





16-1



16-2



16-3

CRZ 426

16-4

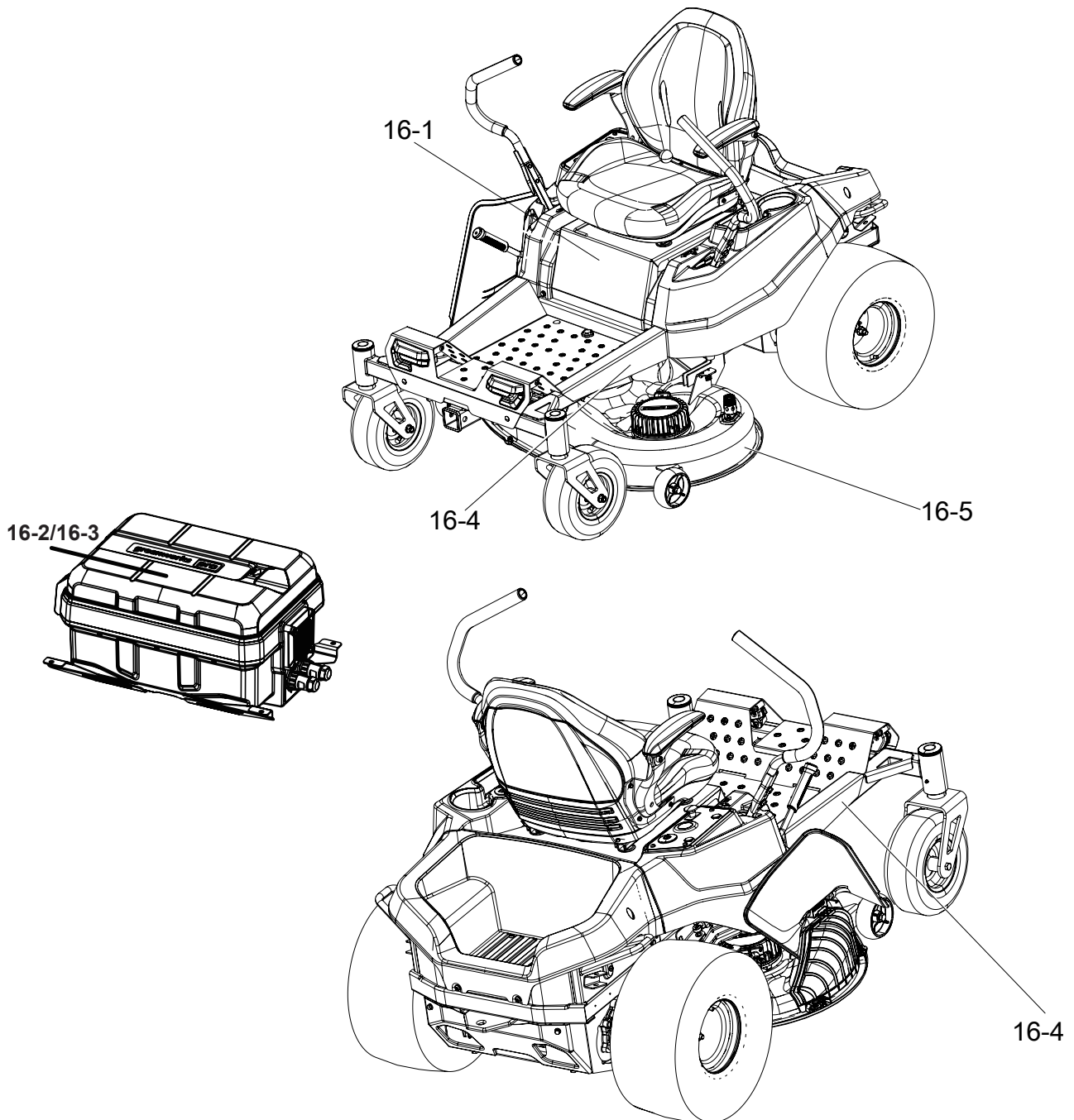
42"

16-5

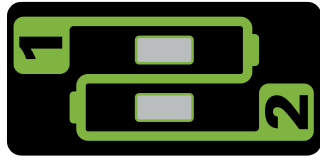
CRZ 428

16-4

ITEM NO.	PART NO.	DESCRIPTION	QTY
16-1	R0202933-00	GW 60V LOGO	1
16-2	R0203297-00	CRT42 60V battery pack compartment clamshell label	1
16-3	R0203299-00	CRT42 80V/82V battery pack compartment clamshell label	1
16-4	R0203308-00	CRZ426 model label (for 7409302)	2
	R0203309-00	CRZ428 model label (for 7409402 / 7409502)	2
16-5	R0203185-00	Zero-turn mower 42-inch cutting label	1



LABELS-FUNCTION



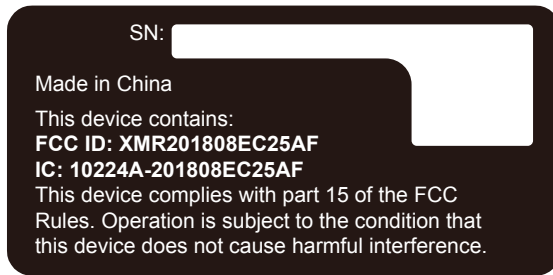
17-1 (A)



17-1 (B)



17-1(C)



17-2

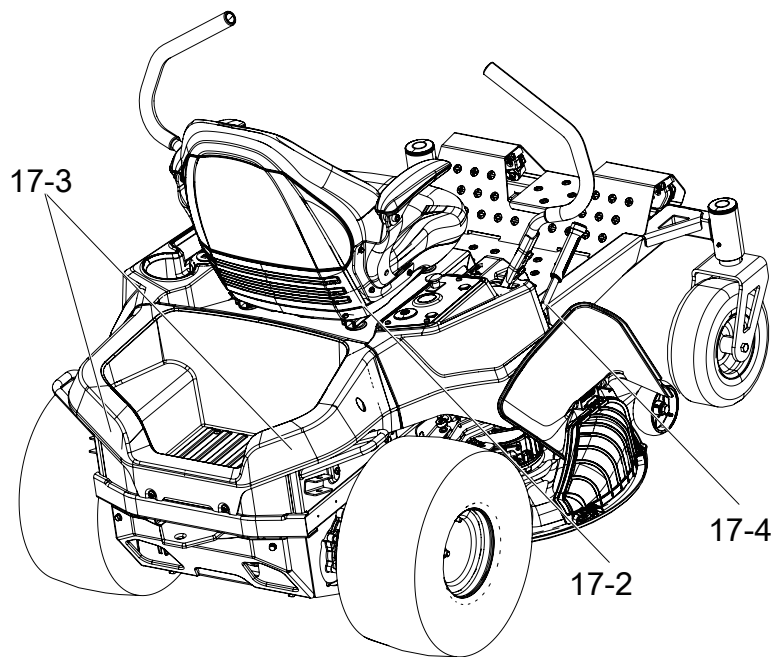
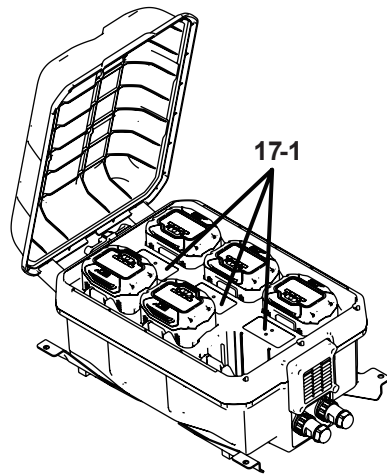


17-3

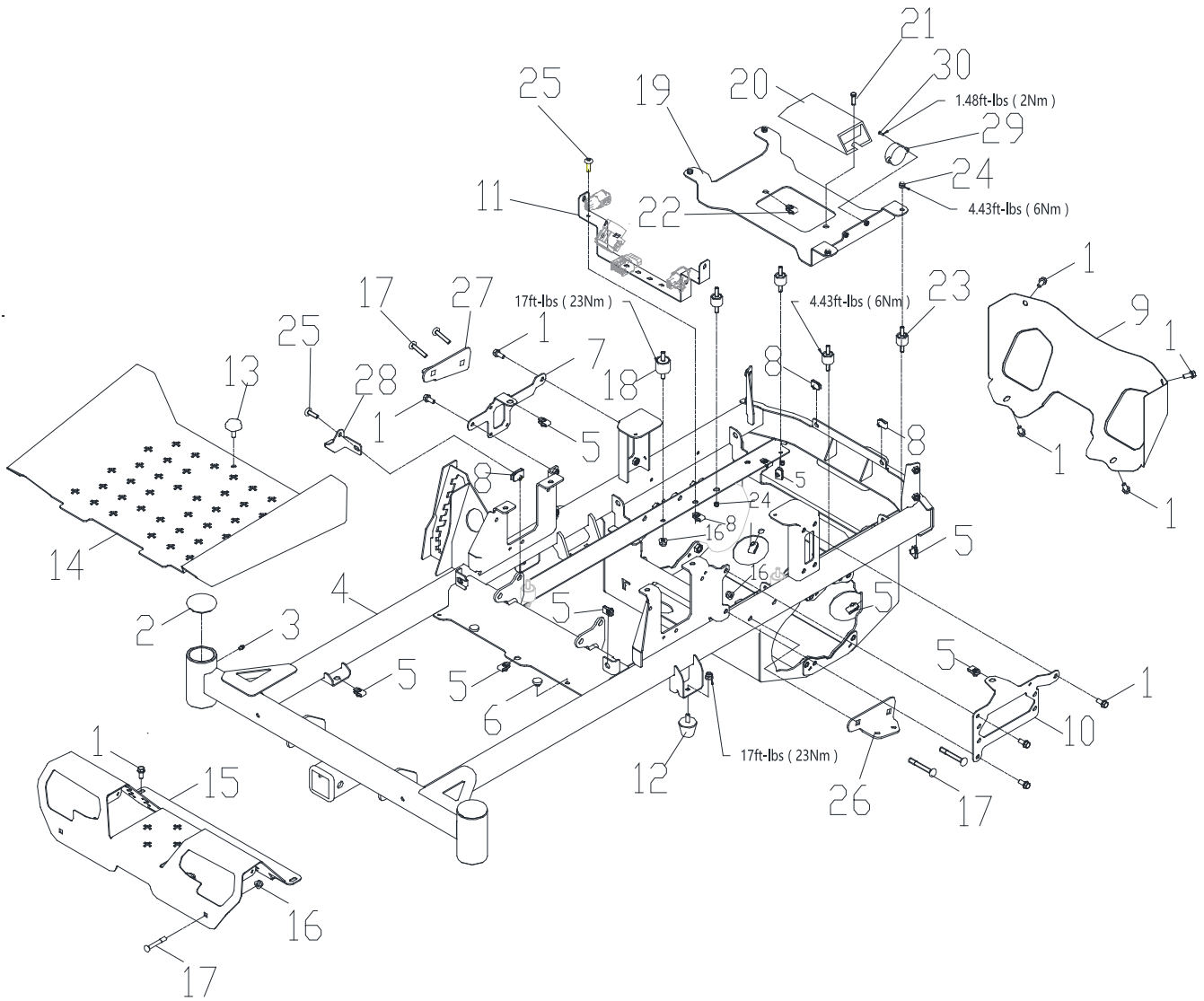


17-4

ITEM NO.	PART NO.	DESCRIPTION	QTY
17-1	R0203300-00	Compartment label A	1
	R0203302-00	Compartment label B	1
	R0203303-00	Compartment label C	1
17-2	R0203305-00	GPS Label	1
17-3	R0203314-00	Left anti-cursor label	1
	R0203315-00	Right anti-cursor label	1
17-4	R0203186-00	Height adjust label	1

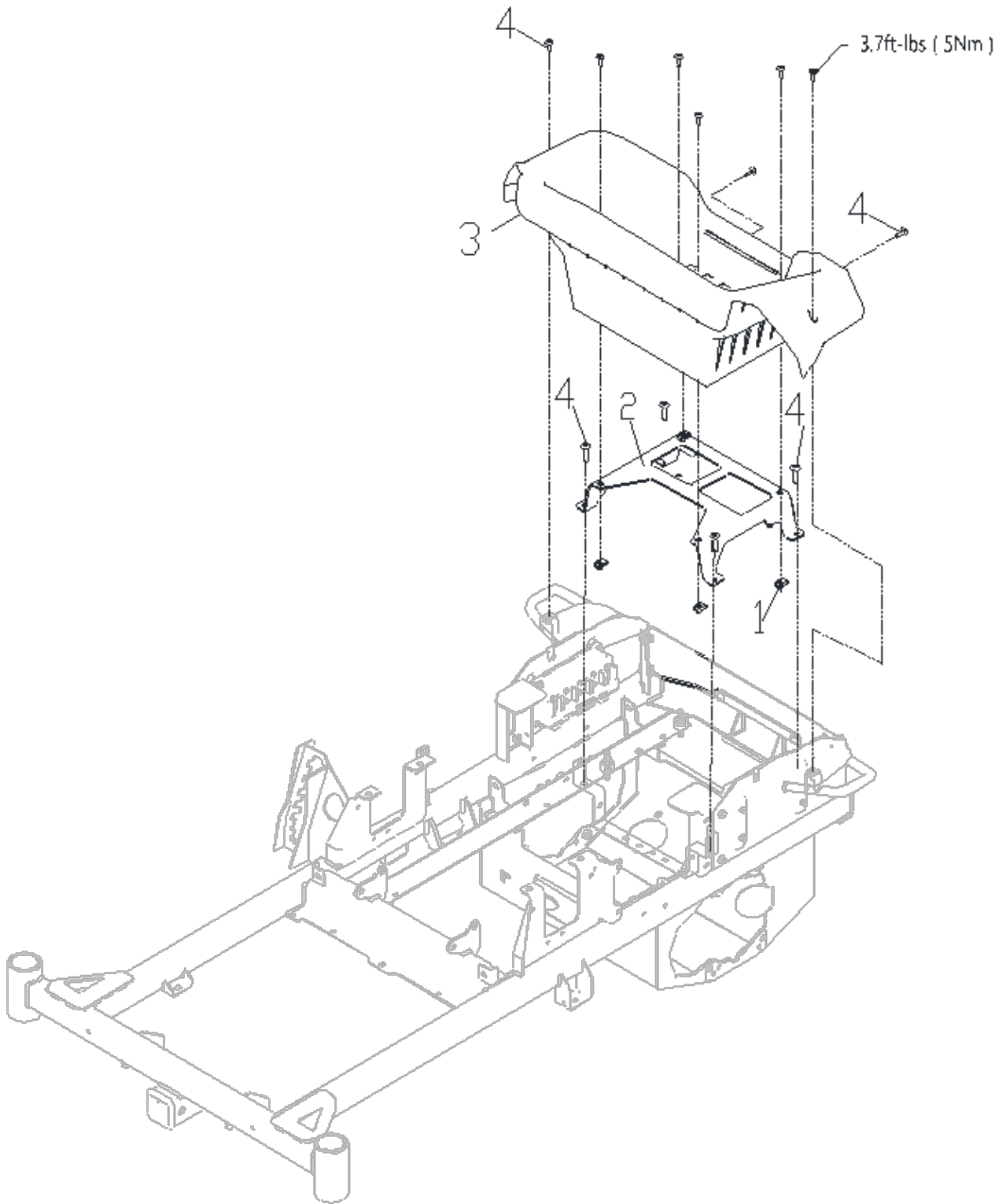


FRAME



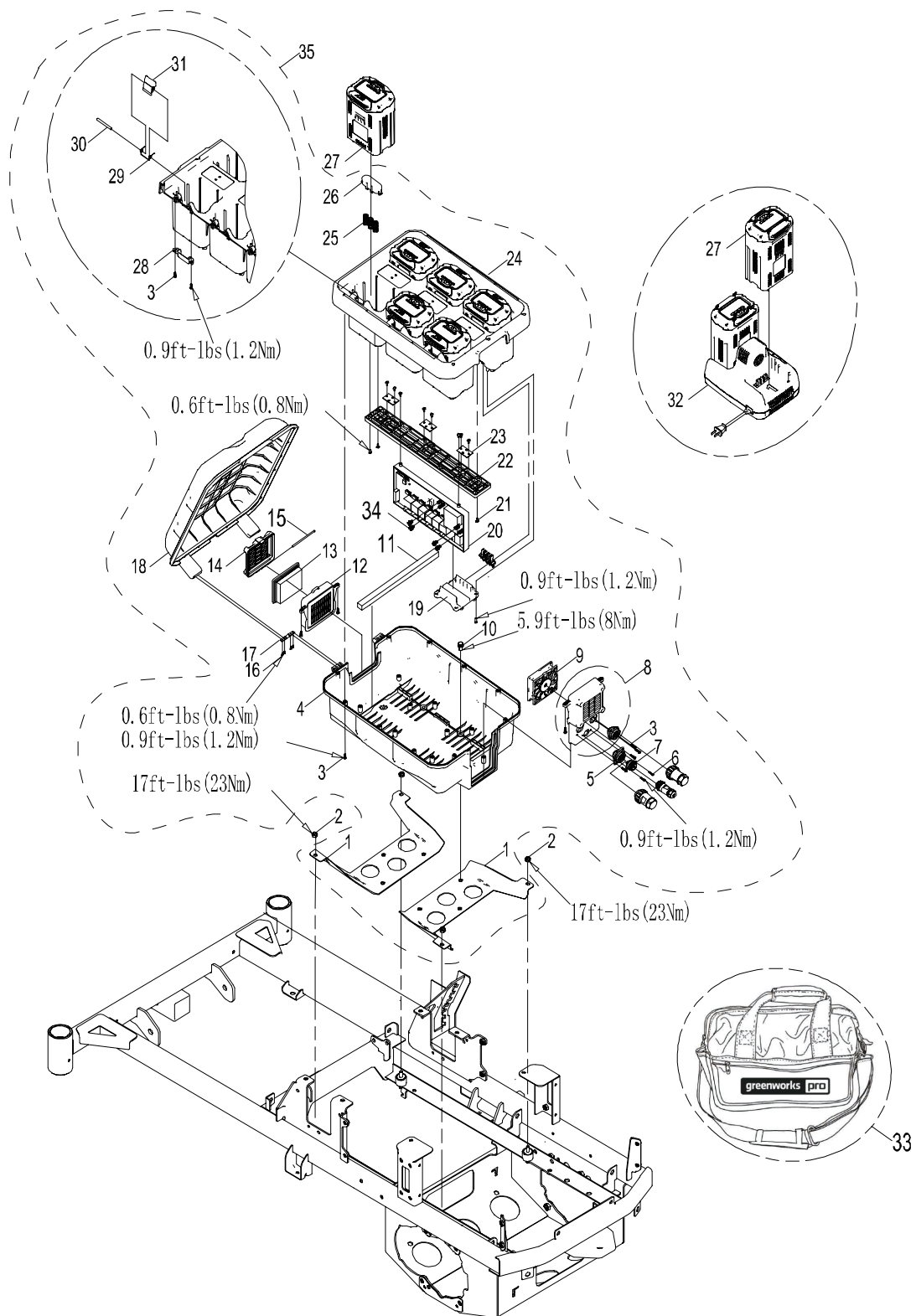
ITEM NO.	PART NO.	DESCRIPTION	QTY
21-1	R0200534-00	Bolt M8×20	15
21-2	R0202222-00	Dust cap	2
21-3	R0200684-00	Grease zerk fitting	2
21-4	R0202221-00	Frame welding	1
21-5	R0200549-00	Nut M8	10
21-6	R0200377-00	Foot pad	2
21-7	R0202220-00	Mounting plate	1
21-8	R0201314-00	Nut plate M6	5
21-9	R0202219-00	Body rear	1
21-10	R0202218-00	Mounting plate	1
21-11	R0203291-00	Plug fixed plate	1
21-12	R0200710-00	Shock pad	2
21-13	R0200376-00	Konb bolt	1
21-14	R0202217-00	Foot pedal	1
21-15	R0202216-00	Front guard welding	1
21-16	R0200496-00	Lock nut M8	14
21-17	R0201547-00	Cup head square neck bolts with small head and short neck - Product grade B	6
21-18	R0201412-00	Shock pad	4
21-19	R0203292-00	Fixed plate	1
21-20	R0203238-00	Cement resistor	1
21-21	R0200551-00	Hexagon pan head screw	2
21-22	R0201499-00	Nut plate	2
21-23	R0202578-00	Insulation pad	4
21-24	R0200518-00	Lock nut, M6	8
21-25	R0201376-00	Hexalobular socket pan head screw	3
21-26	R0203296-00	Air cap lever lug	1
21-27	R0203298-00	Air cap lever lug	1
21-28	R0203301-00	Plug fixed plate	1
21-29	R0201437-00	Audio -buzzer	1
21-30	R0201500-00	Pan head screws with cross recess	2

BATTERY COVER



ITEM NO.	PART NO.	DESCRIPTION	QTY
22-1	R0201314-00	Nut plate M6	4
22-2	R0203393-00	Mounting plate	1
22-3	R0202009-00	Bucket	1
22-4	R0201376-00	Hexagon pan head screw	12

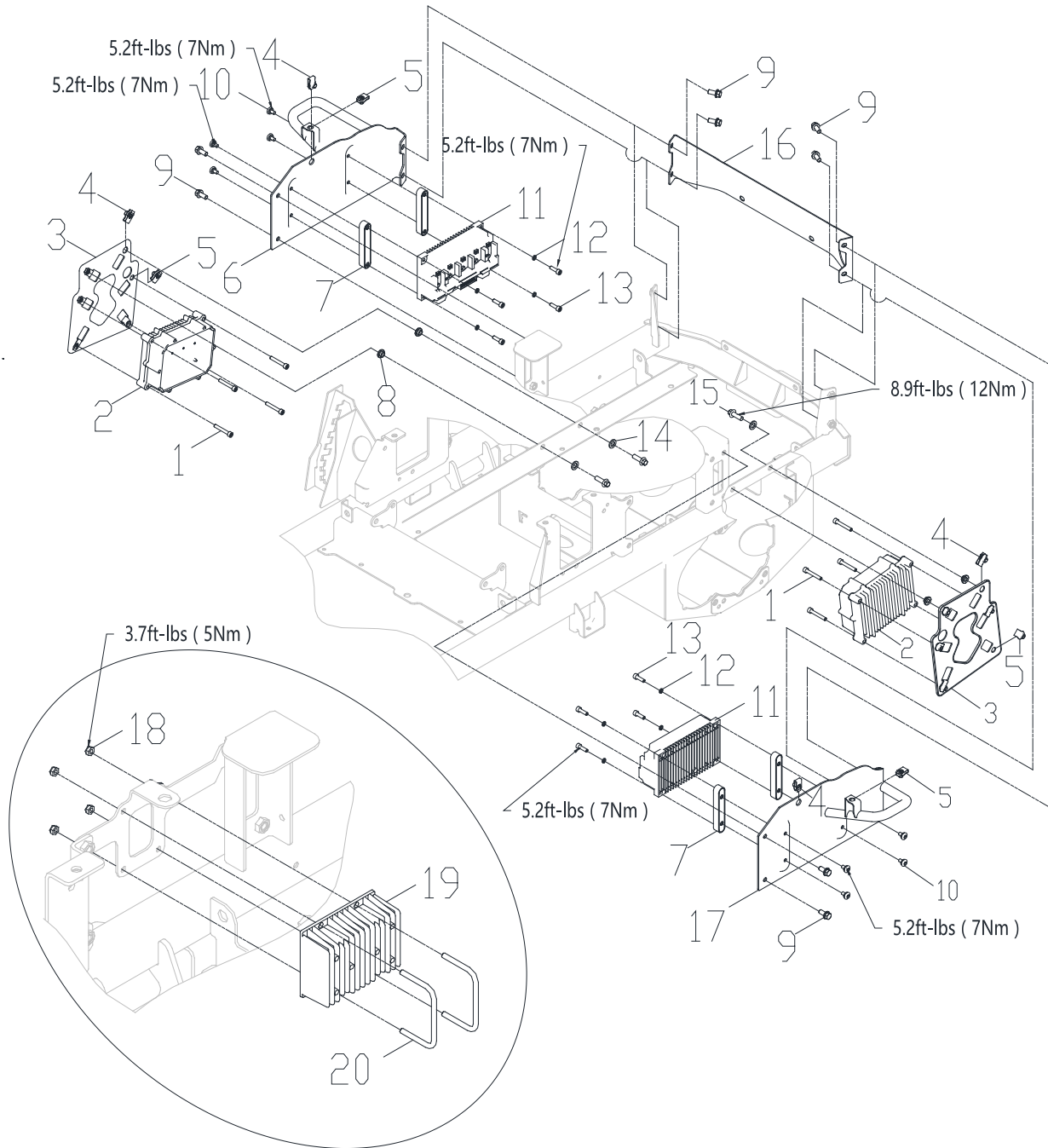
BATTERY AND CHARGER



ITEM NO.	PART NO.	DESCRIPTION	QTY
31-1	R0202636-00	Fixed bracket	2
31-2	R0200520-00	Prevailing torque type hexagon nuts (with non-metallic insert), style 2	4
31-3	R0203426-00	Hexalobular socket pan head tapping screws	42
31-4	R0202638-00	Base	1
31-5	R0203228-00	Battery compartment power cord	1
31-6	R0203425-00	Cross recessed pan head tapping screws	2
31-7	R0203405-00	Battery compartment power cord	1
31-8	R0203229-00	Battery compartment communication line	1
31-9	R0202640-00	Fan	1
31-10	R0200534-00	Bolt M8 ×20	6
31-11	R0203160-00	Dust sponge	2
31-12	R0202641-00	Middle cover	1
31-13	R0202642-00	Filter element	1
31-14	R0202643-00	Front cover	1
31-15	R0202644-00	Rotating shaft	1
31-16	R0203286-00	Hexagon socket button head screws	8
31-17	R0202646-00	Flap hinge	2
31-18	R0203170-00	Battery pack flap assembly	1
31-19	R0203171-00	Terminal retaining plate	3
31-20	R0203230-00	PCBA (Lawnmower - 60V)	1
	R0203247-00	PCBA (Lawnmower - 80V/82V)	1
31-21	R0202649-00	Hexalobular socket pan head tapping screws	12
31-22	R0202650-00	Base mounting plate	1
31-23	R0203237-00	PCBA (Torch)	3
31-24	R0203172-00	Battery compartment assembly	1
	R0203250-00	Battery compartment assembly	1
31-25	R0202671-00	Reset spring	18
31-26	R0203287-00	Spring base	6

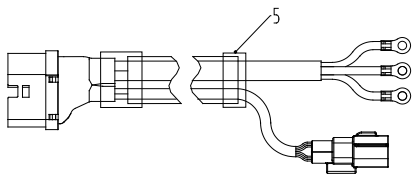
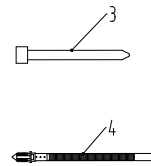
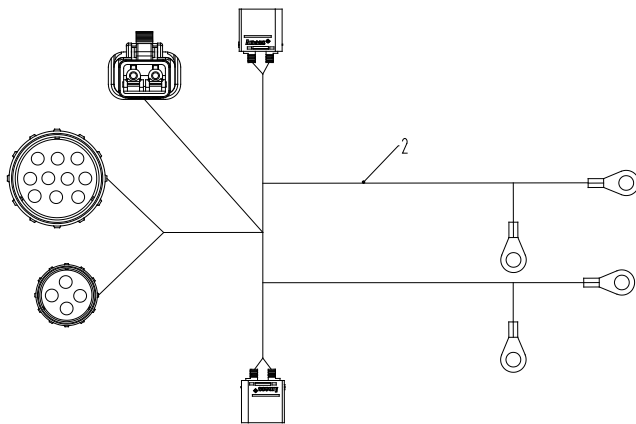
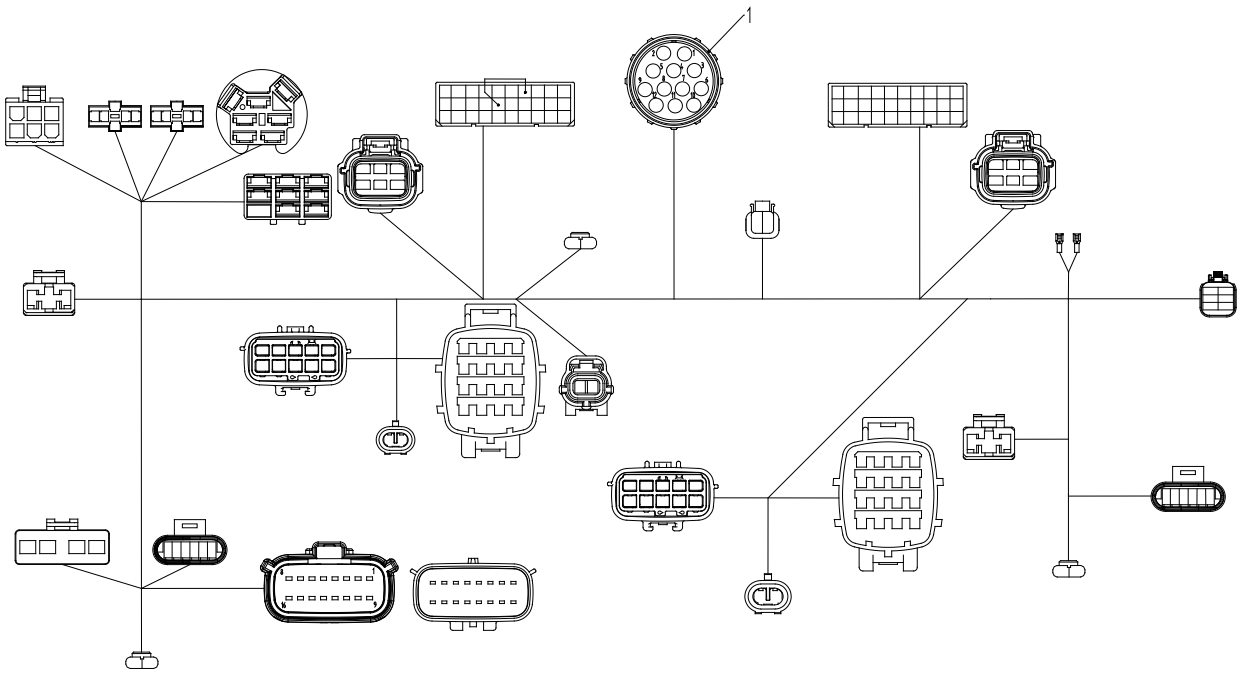
ITEM NO.	PART NO.	DESCRIPTION	QTY
31-27	2957102	GW 60V 2P 21700 Battery	6
	2981102	GW 80V 2P 21700 Battery	12
	2935802	GW 82V 2P 21700 Battery	6
31-28	R0202660-00	Release button shaft retaining plate	6
31-29	R0202672-00	Torsion spring	6
31-30	R0202657-00	Battery pack release button shaft	6
31-31	R0203174-00	Battery pack release button	6
31-32	2958702	Charger (60V)	3
	2958602AZ	Charger (80V)	3
	2958302	Charger (82V)	3
31-33	R0203259-00	Accessory bag	1
31-34	R0203456-00	Hexagon head bolt, single coil spring lock washer and plain washer assemblies	4
31-35	R0204492-00	MGT 6in 80V/82V battery pack assembly	1
	R0204489-00	MGT 6in 60V battery pack assembly	1

CONTROLLER MOUNT



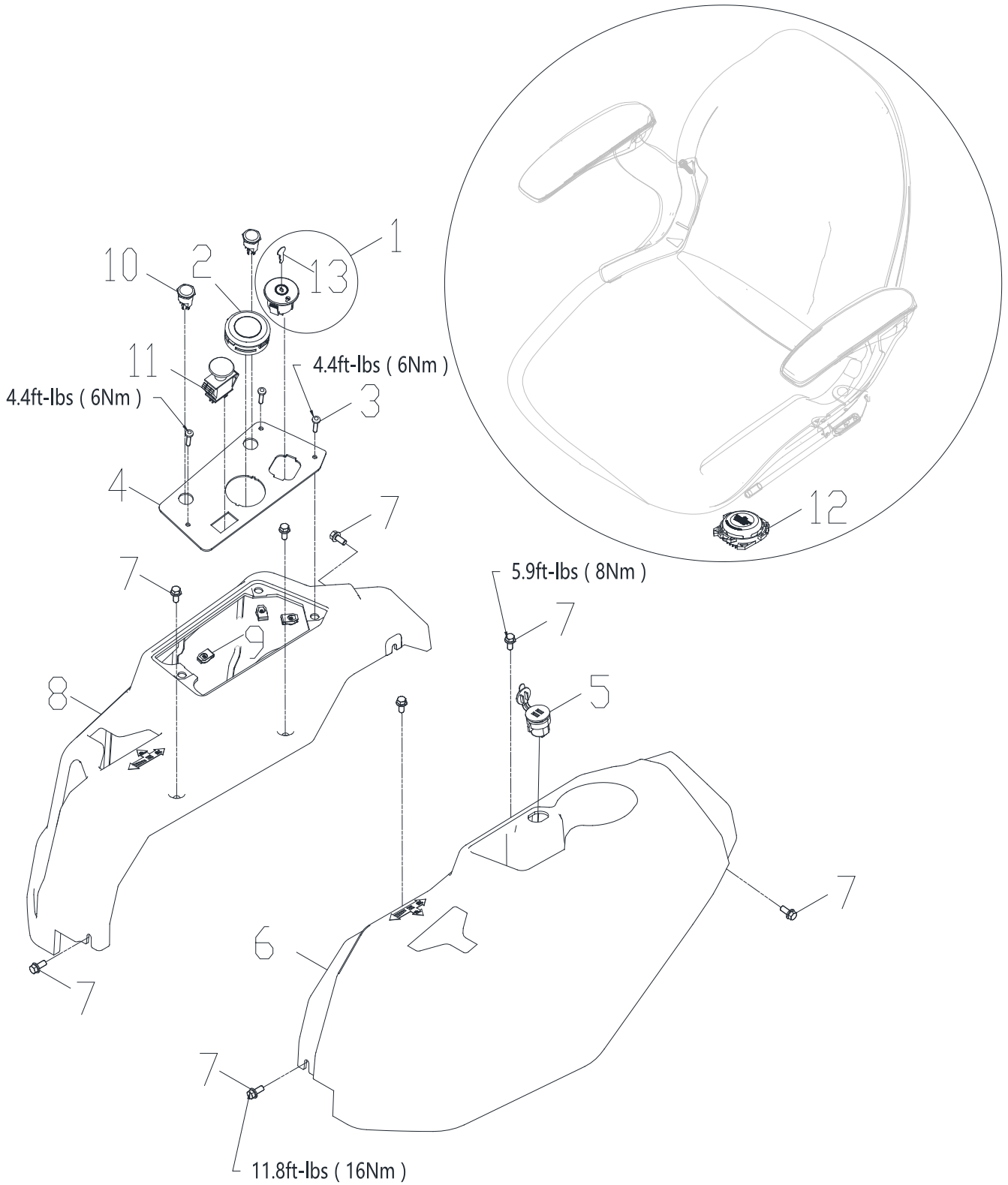
ITEM NO.	PART NO.	DESCRIPTION	QTY
32-1	R0201522-00	Hexagon socket head cap screw	2
32-2	R0203231-00	Drive controller (60V)	2
	R0203243-00	Drive controller (80/82V)	2
32-3	R0202211-00	Mounting plate	2
32-4	R0200549-00	Nut M8	6
32-5	R0201314-00	Nut plate M6	8
32-6	R0202524-00	Right reset bracket welding	1
32-7	R0202024-00	Insulating base	4
32-8	R0201409-00	Nylon sleeve	4
32-9	R0200534-00	Bolt M8 ×20	8
32-10	R0202022-00	Hexagon pan head screw	8
32-11	R0203232-00	Blade controller (60V)	2
	R0203244-00	Blade controller (80/82V)	2
32-12	R0201410-00	Single coil spring lock washers, normal type φ6	8
32-13	R0200546-00	Hexalobular socket pan head screw	8
32-14	R0200393-00	Washer	4
32-15	R0200398-00	Hexagon flange bolts - Heavy series - Product grade B	4
32-16	R0202525-00	Body rear	1
32-17	R0202528-00	Left side plate welding	1
32-18	R0200517-00	Prevailing torque type hexagon nuts (with non-metallic insert), style 2	4
32-19	R0202206-00	DC power supply	1
32-20	R0202027-00	Lock threaded rod	2

WIRE HARNESS



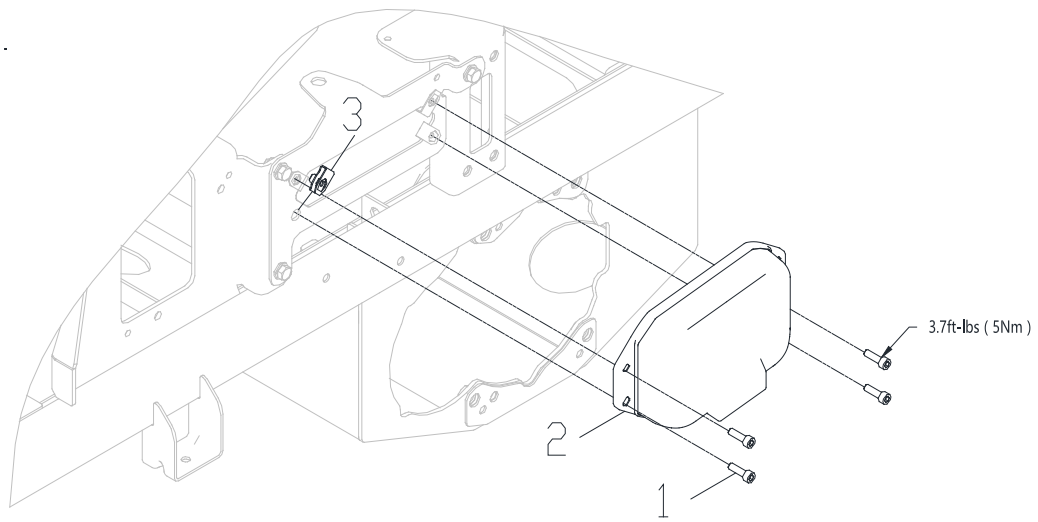
ITEM NO.	PART NO.	DESCRIPTION	QTY
33-1	R0203235-00	Hexagon flange bolts - Heavy series - Product grade B	1
	R0203246-00	Control harness assembly of whole machine	1
33-2	R0203236-00	Power wiring harness for whole machine	1
33-3	R0200390-00	Ribbon	20
33-4	R0202543-00	Ribbon	30
33-5	R0203240-00	Motor wiring harness	2

SWITCHES&GAUGES



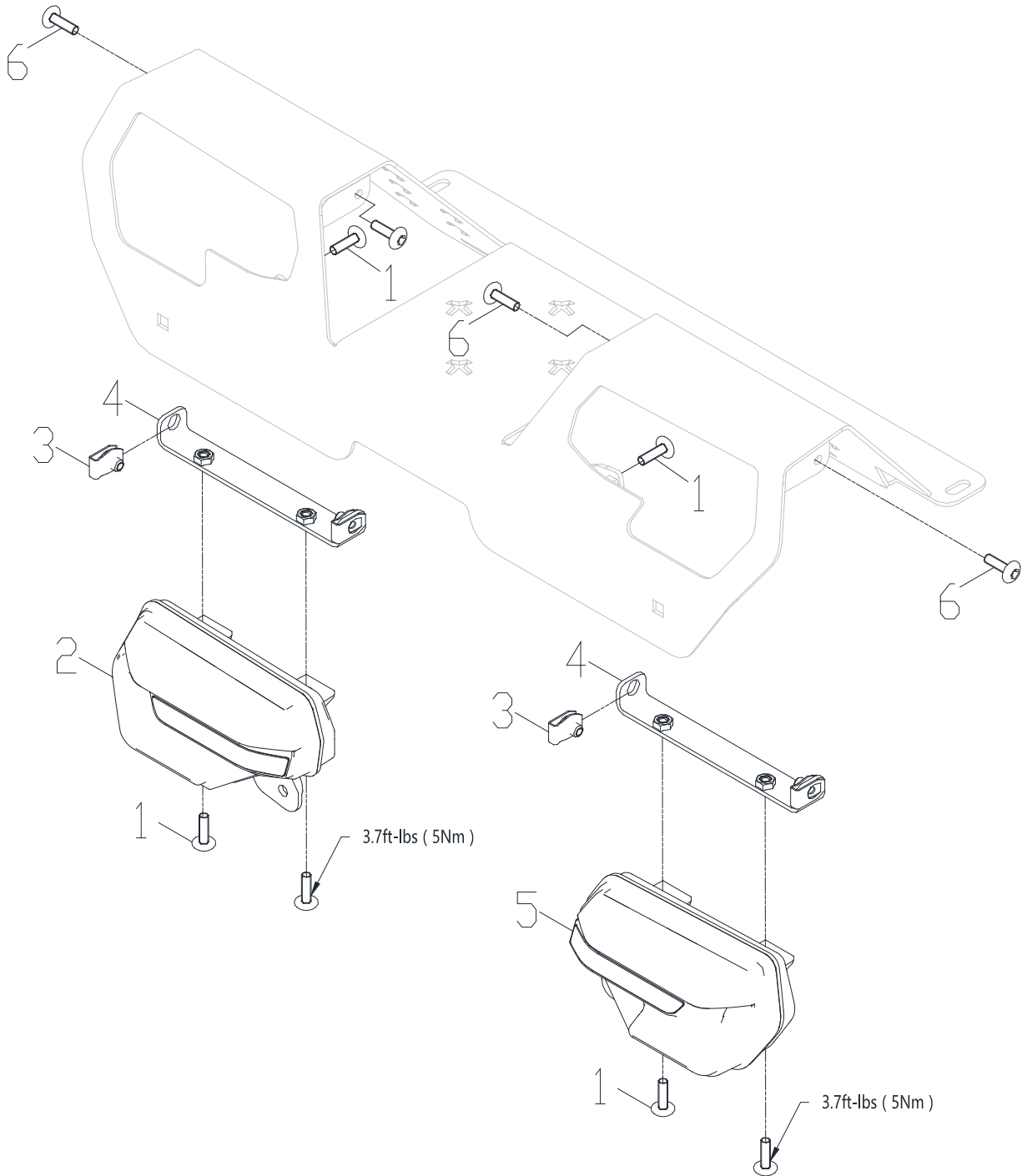
ITEM NO.	PART NO.	DESCRIPTION	QTY
35-1	R0201611-00	Lock switch and key	1
35-2	R0201217-00	Display screen	1
35-3	R0202032-00	Hexalobular socket pan head screw	3
35-4	R0202205-00	Switch panel	1
35-5	R0201612-00	USB	1
35-6	R0202204-00	Left cover piece	1
35-7	R0200534-00	Bolt M8 ×20	8
35-8	R0202203-00	Right cover piece	1
35-9	R0201314-00	Nut plate M6	3
35-10	R0203234-00	High/Low speed switch	2
35-11	R0200717-00	PTO Switch	1
35-12	R0203239-00	Seat switch	1
35-13	R0201216-00	Key	1

GPS



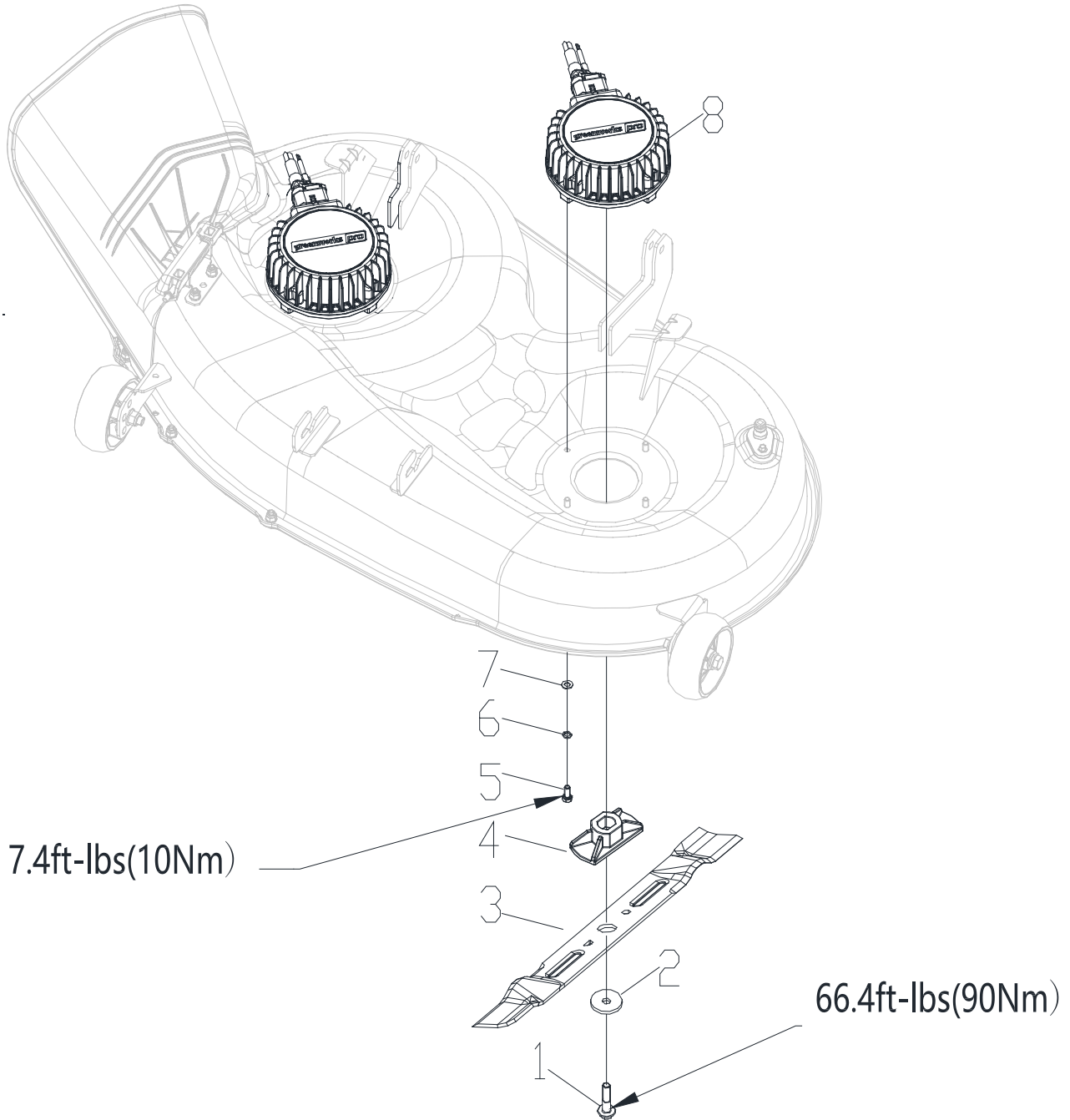
ITEM NO.	PART NO.	DESCRIPTION	QTY
36-1	R0200546-00	Hexalobular socket pan head screw	4
36-2	R0202868-00	GPS	1
36-3	R0201314-00	Nut plate M6	4

LIGHTS



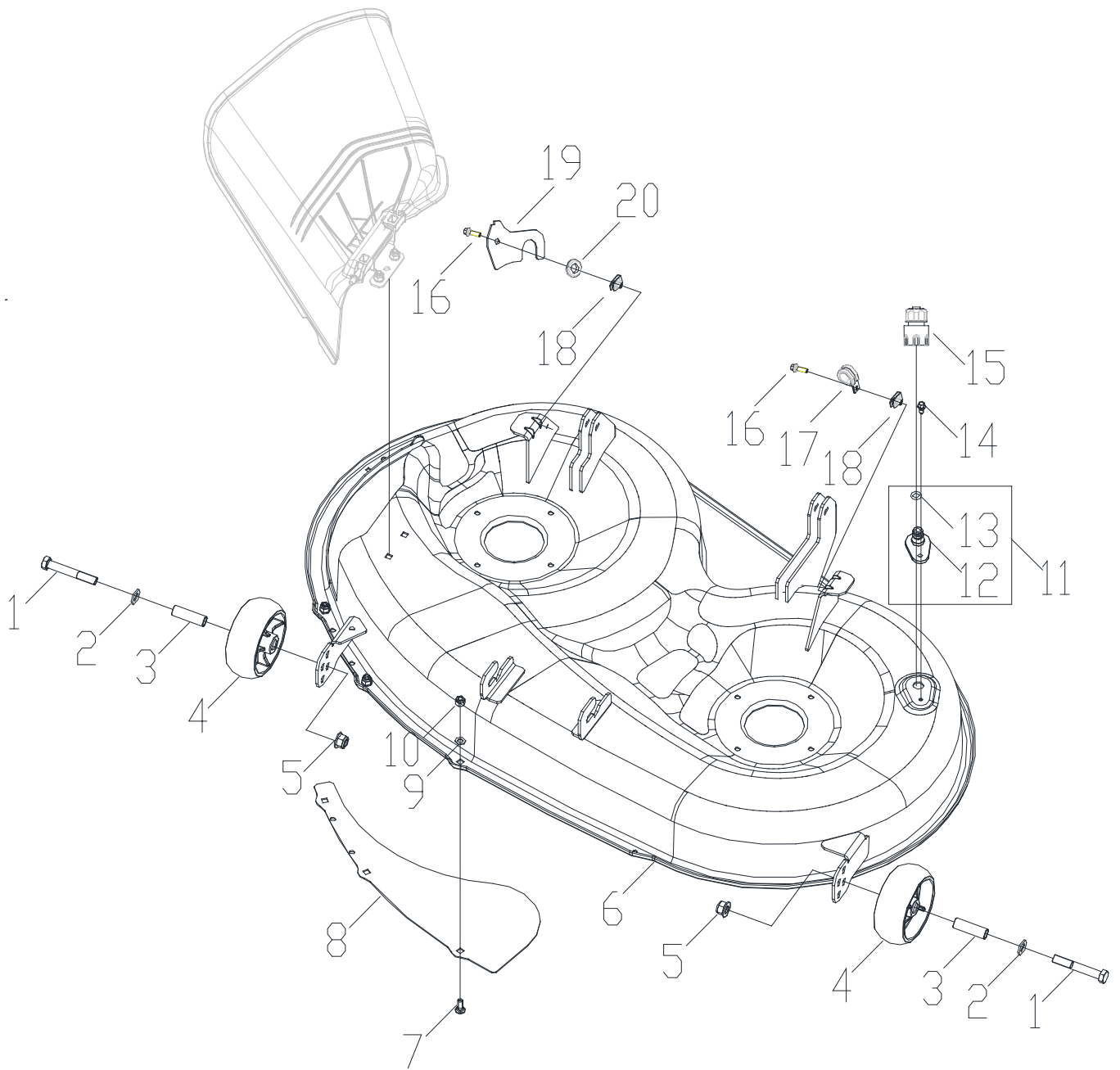
ITEM NO.	PART NO.	DESCRIPTION	QTY
39-1	R0201279-00	Hexagon lobular socket raised head screw with collar	6
39-2	R0202201-00	Right front lamp	1
39-3	R0201314-00	Nut plate M6	4
39-4	R0202200-00	Adapting plate	2
39-5	R0202199-00	Left front lamp	1
39-6	R0201376-00	Hexagon Pan Head screw	4

DECK, MOTORS AND BLADES



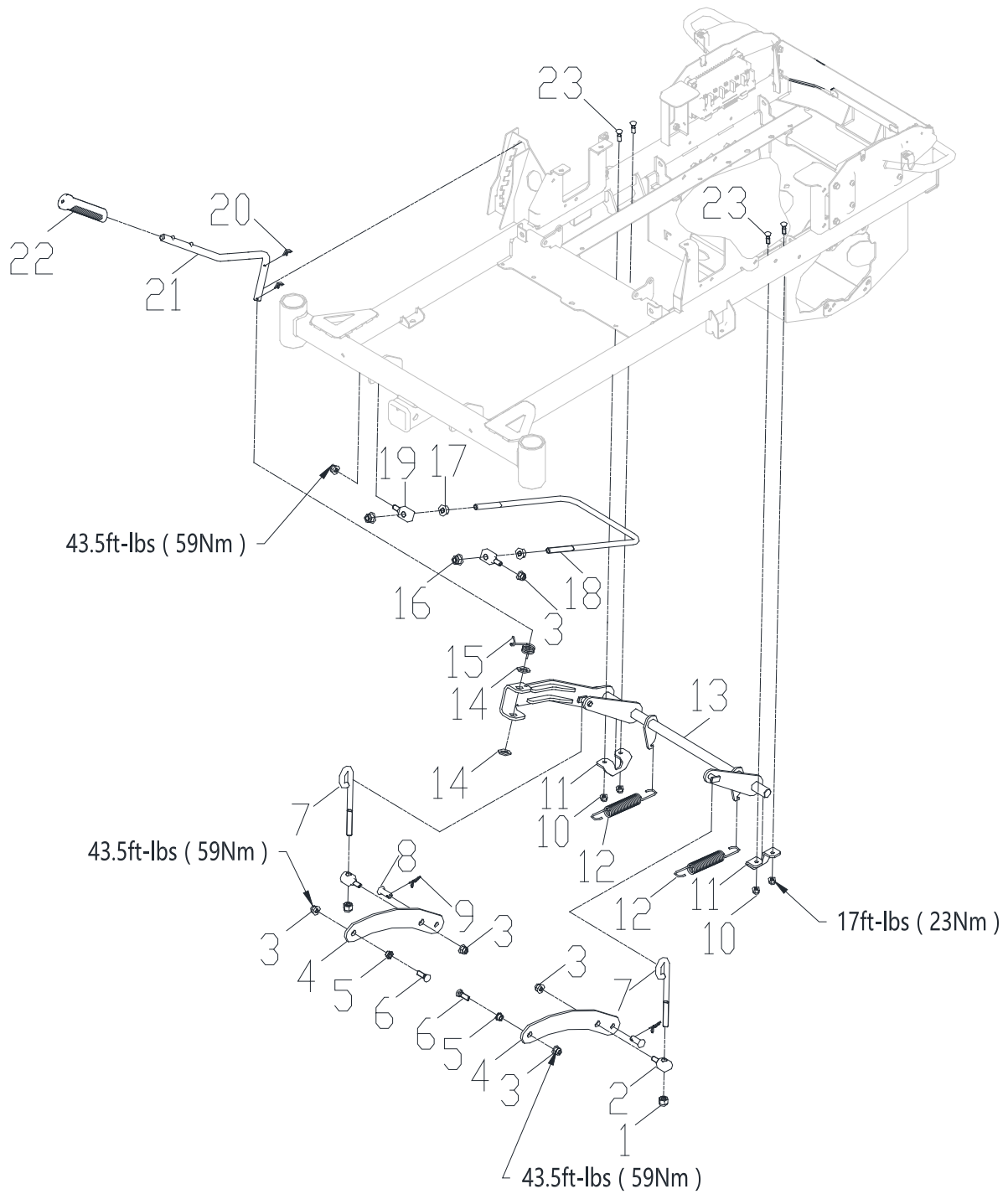
ITEM NO.	PART NO.	DESCRIPTION	QTY
41-1	R0202285-00	Hexagon head bolts	2
41-2	R0202284-00	Washer	2
41-3	R0203256-00	Blade	2
41-4	R0202282-00	Blade holder	2
41-5	R0202281-00	Hexagon head bolts 5/16-18UNC	8
41-6	R0202280-00	Single coil spring lock washers	8
41-7	R0200548-00	Plain washer - Product grade A	8
41-8	R0202292-00	Motor (60V)	2
	R0202244-00	Motor (80V/82V)	2

DECK COMPONENTS



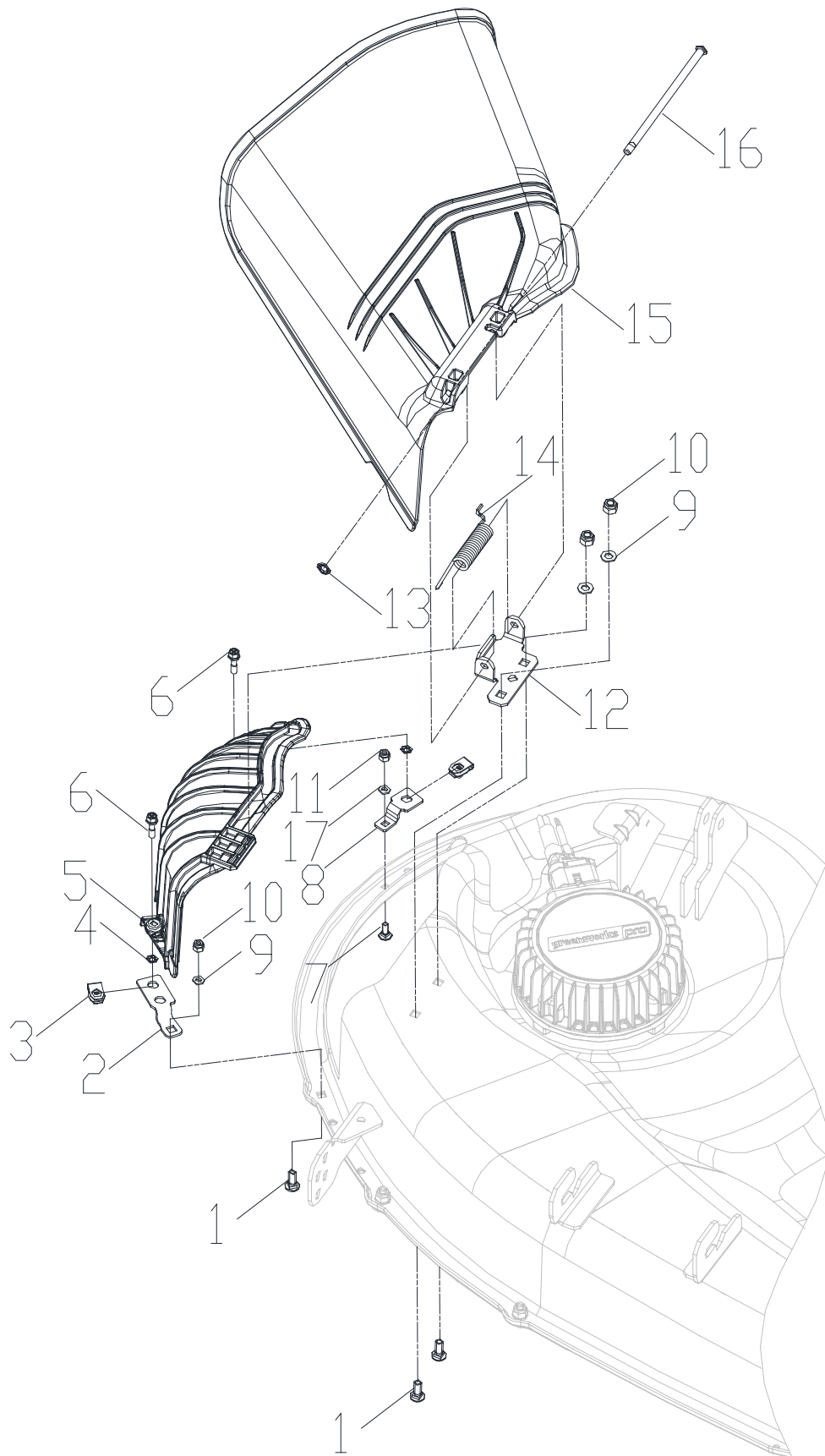
ITEM NO.	PART NO.	DESCRIPTION	QTY
42-1	R0200401-00	Hexagon head bolts M12X80	2
42-2	R0200543-00	Plain washers - Product grade A, ϕ 12	2
42-3	R0202286-00	Cutting deck wheel sleeve pipe	2
42-4	R0202287-00	Cutting deck wheel	2
42-5	R0200523-00	Lock Nut M12	2
42-6	R0202288-00	Cutting deck welding	1
42-7	R0200526-00	Cup head square neck bolts with small head and short neck - Product grade B	3
42-8	R0202289-00	Air guide housing	1
42-9	R0200548-00	Plain washers - Product grade A, ϕ 8	3
42-10	R0200569-00	Lock Nut M8	3
42-11	R0202290-00	Deck washout port assembly	1
42-12	R0202291-00	Deck washout port	1
42-13	R0203283-00	O - Ring	1
42-14	R0202294-00	Hexagon flange head tapping screw	1
42-15	R0203282-00	Garden hose adaptor	1
42-16	R0200507-00	Hexagon flange bolts - Heavy series - Product grade B	2
42-17	R0200412-00	Hose clamp	1
42-18	R0201314-00	Nut plate M6	2
42-19	R0203340-00	Cord clamp	1
42-20	R0203339-00	Wire protective sleeve	1

DECKLIFT



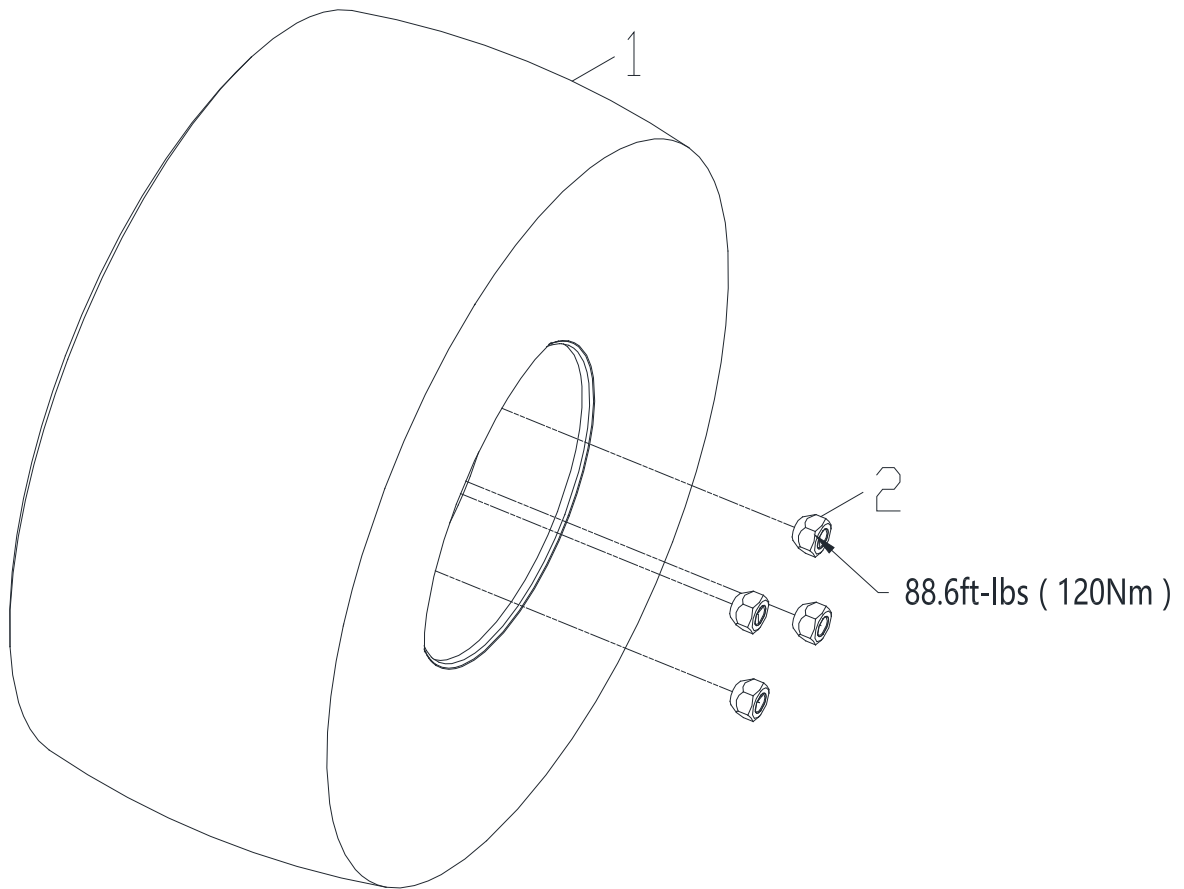
ITEM NO.	PART NO.	DESCRIPTION	QTY
45-1	R0200515-00	Lock nut M12	2
45-2	R0202233-00	Trunnion	2
45-3	R0200521-00	Lock nut M10	6
45-4	R0202232-00	Side pull plate	2
45-5	R0201469-00	Bushing	2
45-6	R0202231-00	Cup head square neck bolts with small head and short neck - Product grade B	2
45-7	R0202230-00	Height adjustment rod	2
45-8	R0202229-00	Pin shaft	2
45-9	R0201398-00	R Pin	2
45-10	R0200496-00	Lock nut M8	4
45-11	R0201455-00	Fixed plate	2
45-12	R0203167-00	Spring	2
45-13	R0202227-00	Rear height adjustment welding	1
45-14	R0201475-00	Washer	2
45-15	R0203168-00	Torsion spring	1
45-16	R0200369-00	Lock nut M12	2
45-17	R0200559-00	Hexagon nuts with flange M12	2
45-18	R0201470-00	Forward Deck Hanger	1
45-19	R0202225-00	Lock pin	2
45-20	R0201478-00	R Pin	2
45-21	R0202224-00	Height adjustment lever	1
45-22	R0202223-00	Height adjustment handle sleeve	1
45-23	R0200527-00	Cup head square neck bolts with small head and short neck - Product grade B	4

DISCHARGE CHUTE



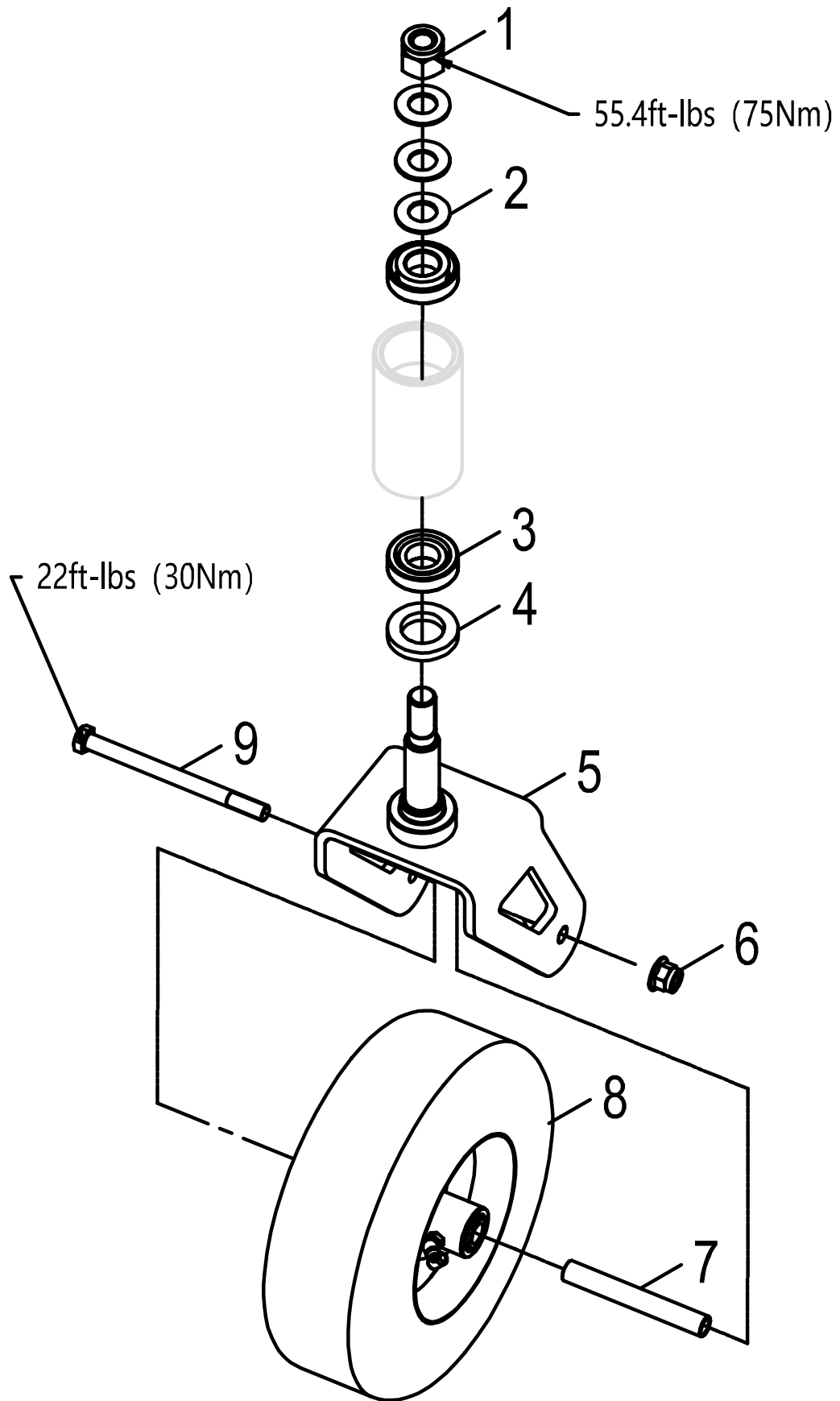
ITEM NO.	PART NO.	DESCRIPTION	QTY
46-1	R0200526-00	Cup head square neck bolts with small head and short neck - Product grade B	3
46-2	R0202296-00	Fixed seat	1
46-3	R0201314-00	Nut plate M6	2
46-4	R0202297-00	Starlock washer	2
46-5	R0202298-00	Mulch cover	1
46-6	R0202299-00	Customized bolt	2
46-7	R0202300-00	Cup head square neck bolts with small head and short neck - Product grade B, M6X16	1
46-8	R0202301-00	Fixed seat	1
46-9	R0200548-00	Plain washers-Product grade A, ϕ 8	3
46-10	R0200569-00	Lock nut, M8	3
46-11	R0200518-00	Lock nut, M6	1
46-12	R0202302-00	Straw support plate	1
46-13	R0202303-00	Starlock washer	1
46-14	R0202304-00	Torsion spring	1
46-15	R0202305-00	Straw discharge cover	1
46-16	R0202306-00	Fixed pin	1
46-17	R0200547-00	Plain washers-Product grade A, ϕ 6	1

WHEELS



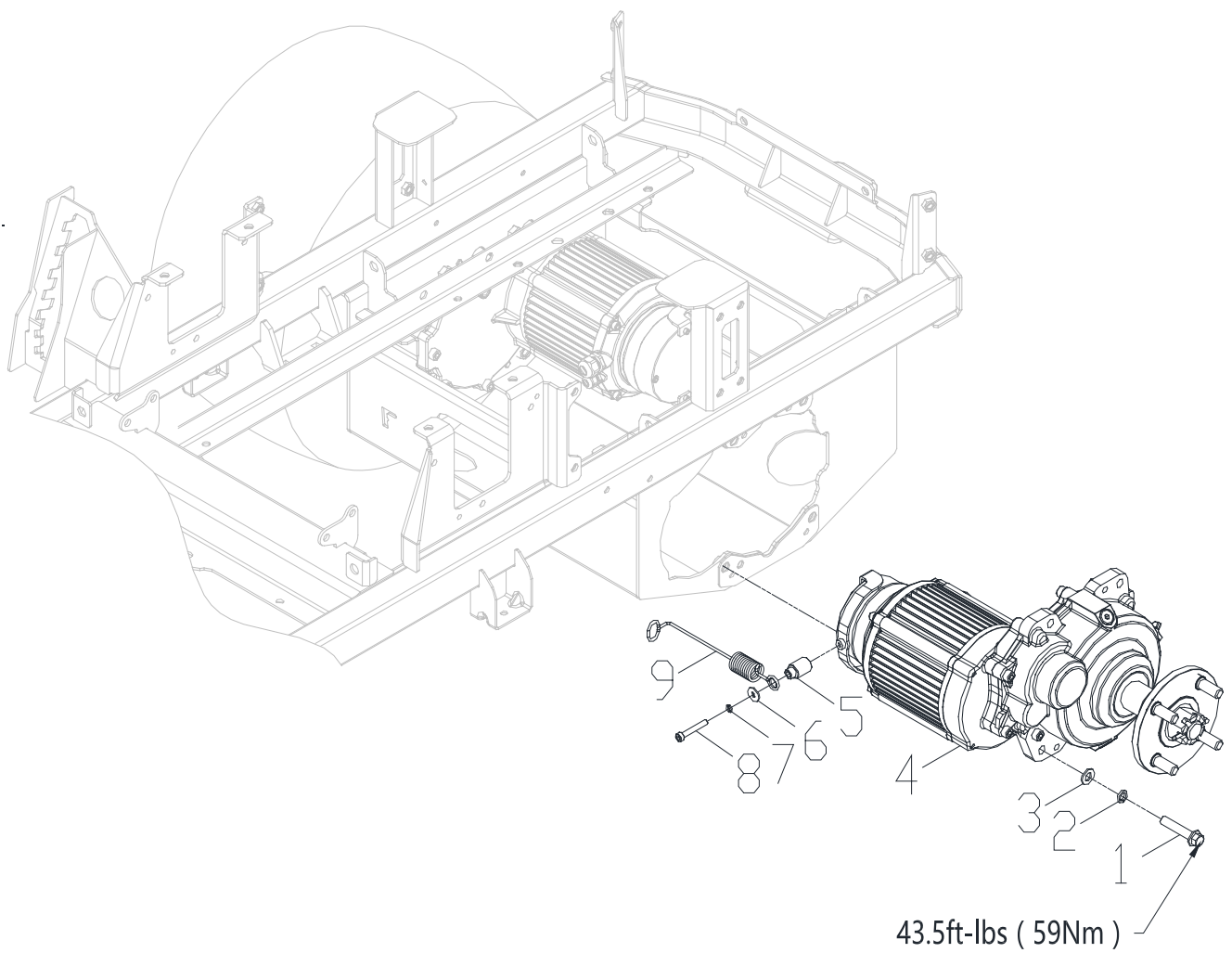
ITEM NO.	PART NO.	DESCRIPTION	QTY
52-1	R0201518-00	Rear wheel	2
52-2	R0200368-00	Wheel fastening nut 1/2-20UNF	8

FRONT CASTER PARTS



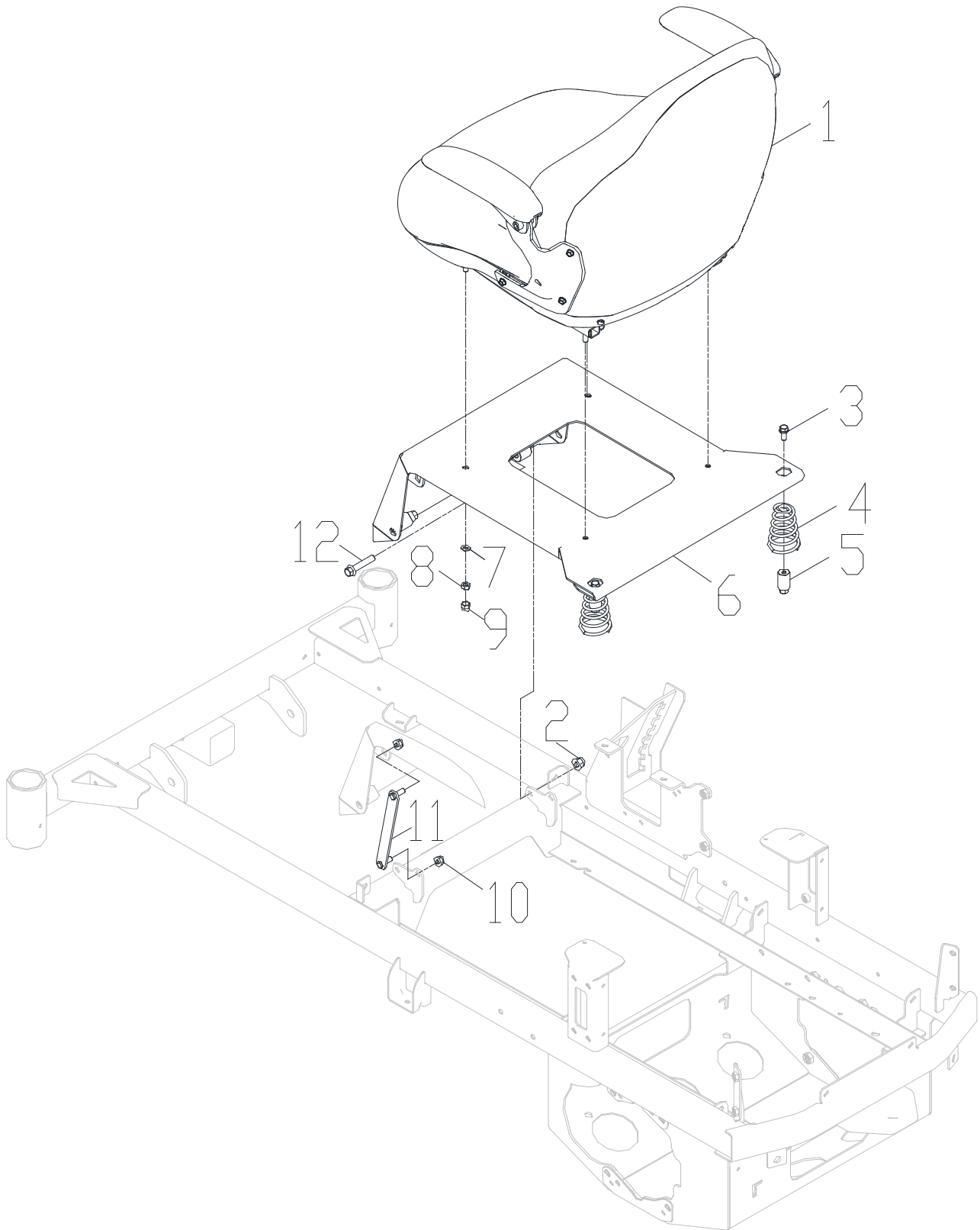
ITEM NO.	PART NO.	DESCRIPTION	QTY
52-1	R0200372-00	Nut M20	2
52-2	R0200373-00	Disc spring A40-2	6
52-3	R0201463-00	Tapered roller bearings	4
52-4	R0201464-00	Oil sealing	2
52-5	R0202198-00	Front fork welding	1
52-6	R0200369-00	Lock nut M12	1
52-7	R0201468-00	Front shaft sleeve	1
52-8	R0201467-00	Front wheel general assembly	1
52-9	R0201465-00	Hexagon head bolts	1

DRIVE MOTOR AND TRANSMISSION



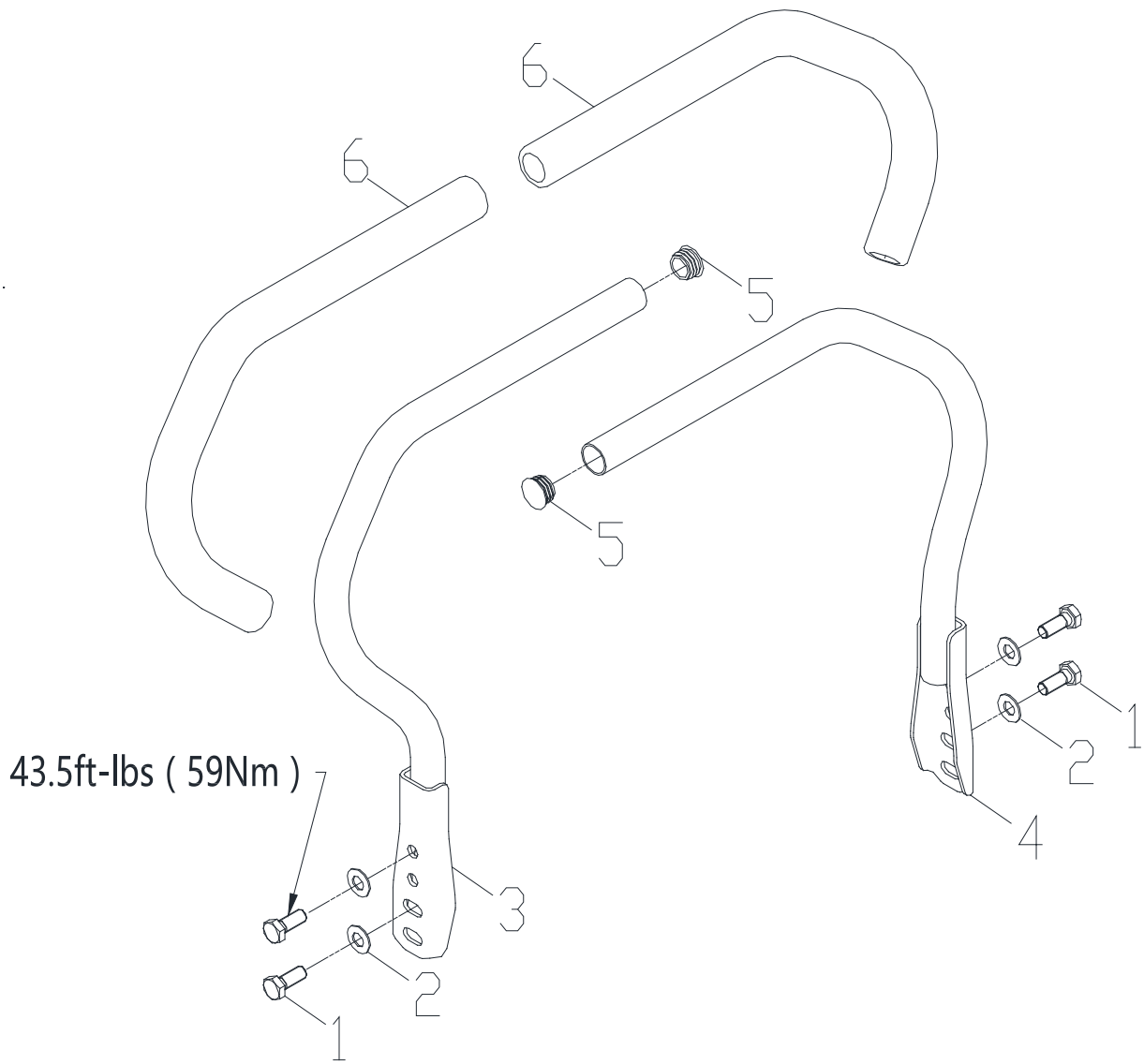
ITEM NO.	PART NO.	DESCRIPTION	QTY
55-1	R0200765-00	Hexagon flange bolts - Product grade B	8
55-2	R0200499-00	Single coil spring lock washer, normal type, φ10	8
55-3	R0200502-00	Plain washers - Product grade A, φ10	12
55-4	R0203233-00	Gear Box/ Motor Assembly (60V)	2
	R0203245-00	Gear Box/ Motor Assembly (80V/82V)	2
55-5	R0201520-00	Distance sleeve	2
55-6	R0201521-00	Plain washers - Large series - Product grade A	2
55-7	R0201410-00	Standard spring washer φ6	2
55-8	R0201522-00	Hexagon socket head cap screw	2
55-9	R0201523-00	Spring	2

SEAT AND MOUNT



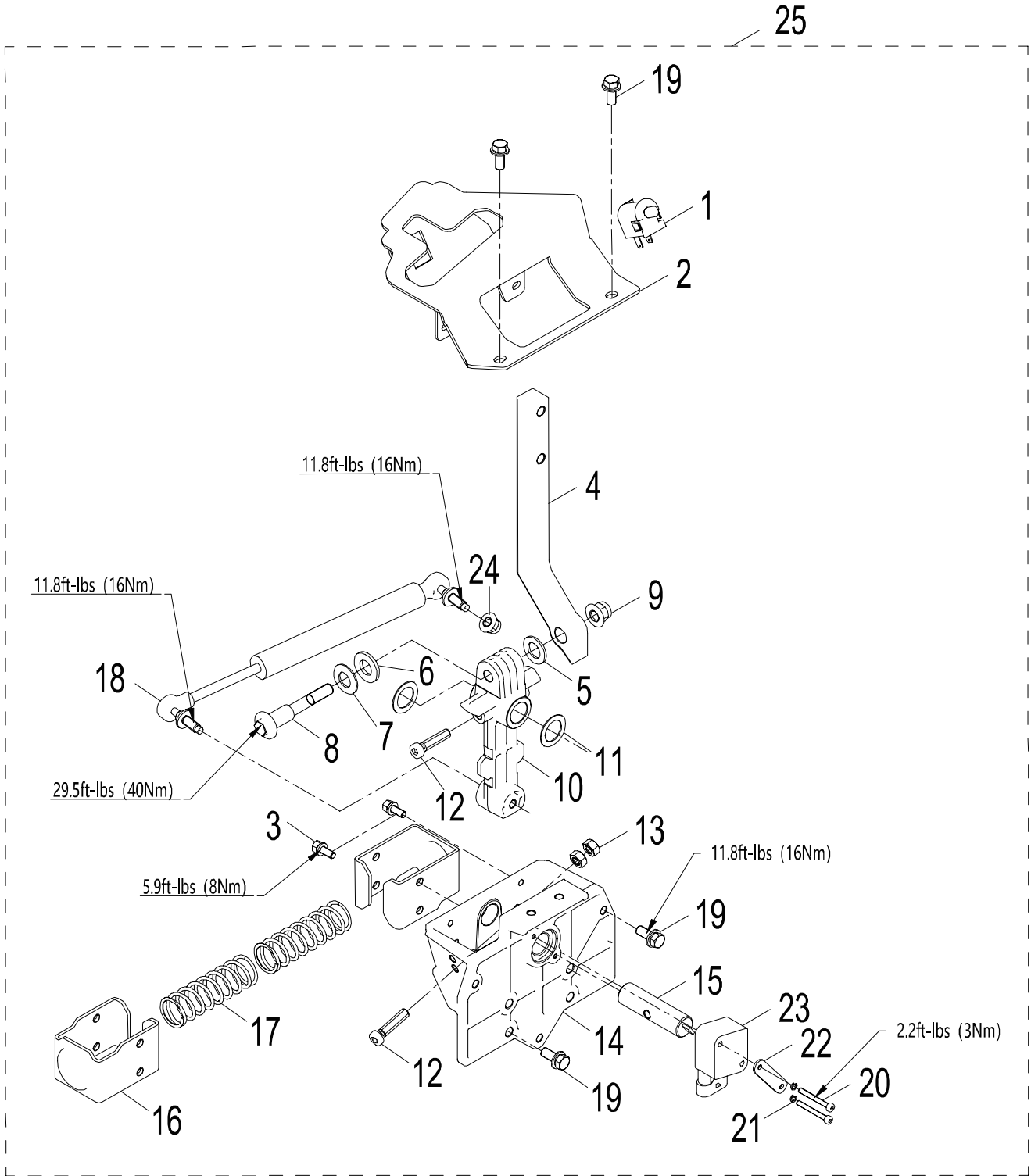
ITEM NO.	PART NO.	DESCRIPTION	QTY
61-1	R0203253-00	Seat	1
61-2	R0200521-00	Lock nut M10	2
61-3	R0200534-00	Bolt M8 ×20	2
61-4	R0203275-00	Spring	2
61-5	R0202039-00	Limiting displacement bar	2
61-6	R0202197-00	Fixed plate assembly	1
61-7	R0200548-00	Plain washer - Product grade A, φ8	4
61-8	R0200571-00	Nylon locking nut 5/16-18	4
61-9	R0202186-00	Protective sleeve	4
61-10	R0200496-00	Lock nut M8	2
61-11	R0203290-00	Limiting displacement bar	1
61-12	R0200765-00	Hexagon flange bolts - Product grade B, M10x50	2

CONTROL ARMS



ITEM NO.	PART NO.	DESCRIPTION	QTY
63-1	R0200509-00	Hexagon head bolts (Full thread) M10X25	4
63-2	R0200378-00	Disc spring A22_5-2	4
63-3	R0203267-00	Left control handle welding	1
63-4	R0203268-00	Right control handle welding	1
63-5	R0201530-00	Pipe plug	2
63-6	R0201532-00	Control rod sleeve	2

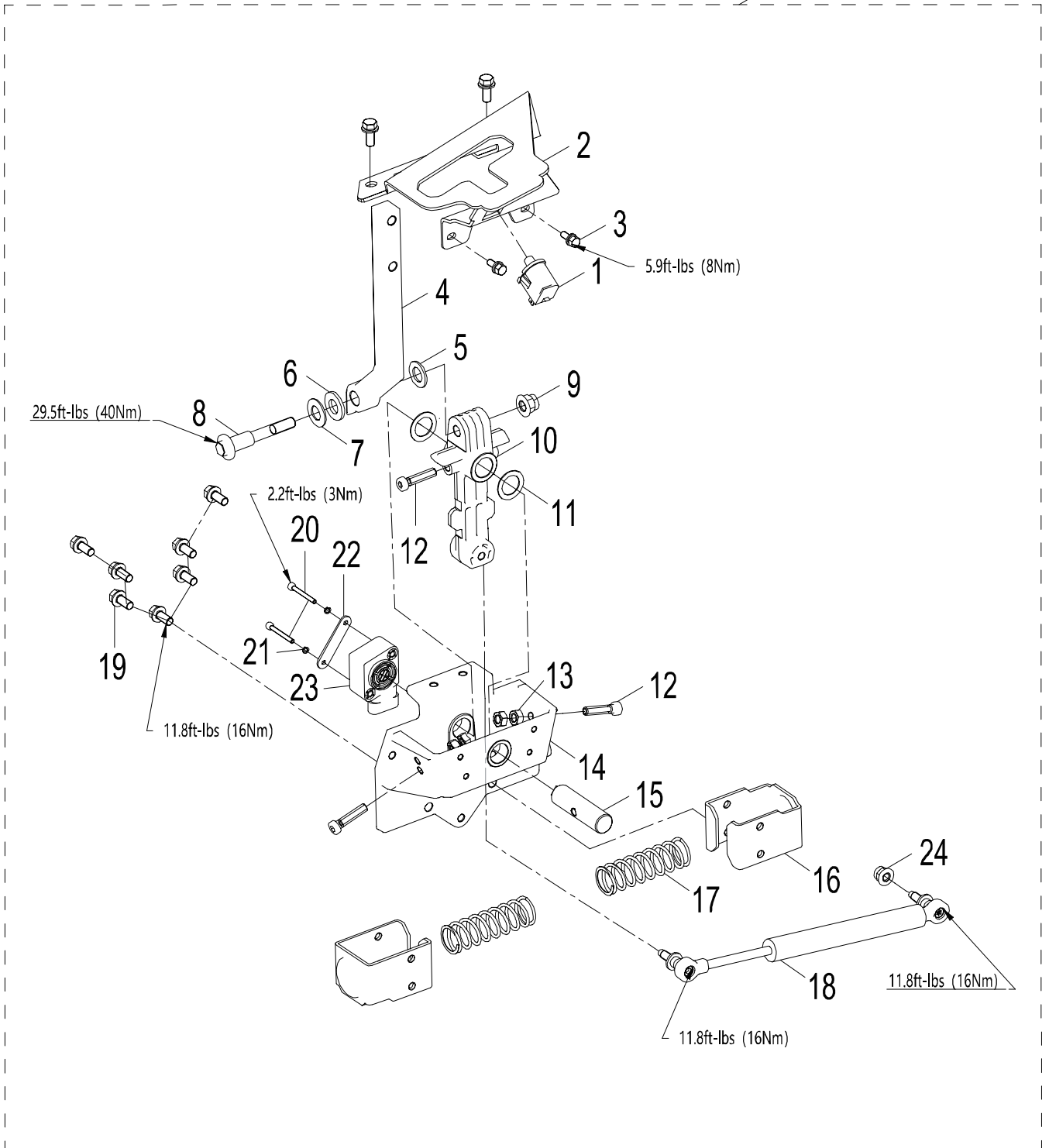
CONTROL BOX RH



ITEM NO.	PART NO.	DESCRIPTION	QTY
64-1	R0200366-00	Brake safety switch	1
64-2	R0201543-00	Right bracket	1
64-3	R0200532-00	Bolt assembly M6×16	2
64-4	R0201534-00	Operating handle	1
64-5	R0201356-00	Nylon pad	1
64-6	R0201358-00	Washer	1
64-7	R0201362-00	Disc spring	1
64-8	R0201363-00	Customized bolt	1
64-9	R0200521-00	Lock nut M10	1
64-10	R0201364-00	Swing arm	1
64-11	R0201353-00	Nylon washer	2
64-12	R0201350-00	Hexagon socket head cap screw	3
64-13	R0200519-00	Hexagon nut, style 1	4
64-14	R0201535-00	Fixed seat	1
64-15	R0201536-00	Rotating shaft	1
64-16	R0202532-00	Spring seat assembly	2
64-17	R0201537-00	Compression spring	2
64-18	R0201538-00	Damper	1
64-19	R0200534-00	Bolt M8X20	9
64-20	R0201539-00	Hexagon socket head cap screw	2
64-21	R0200536-00	Single coil spring lock washer, normal type	2
64-22	R0201541-00	Subplate	1
64-23	R0201542-00	Accelerator	1
64-24	R0200496-00	Lock nut M8	1
64-25	R0204491-00	Right operation assembly	1

CONTROL BOX LH

25



ITEM NO.	PART NO.	DESCRIPTION	QTY
65-1	R0200366-00	Brake safety switch	1
65-2	R0201533-00	Left bracket	1
65-3	R0200532-00	Bolt assembly M6×16	2
65-4	R0201534-00	Operating handle	1
65-5	R0201356-00	Nylon pad	1
65-6	R0201358-00	Washer	1
65-7	R0201362-00	Disc spring	1
65-8	R0201363-00	Customized bolt	1
65-9	R0200521-00	Lock nut M10	1
65-10	R0201364-00	Swing arm	1
65-11	R0201353-00	Nylon washer	2
65-12	R0201350-00	Hexagon socket head cap screw	3
65-13	R0200519-00	Hexagon nuts, style 1, M8	4
65-14	R0201535-00	Fixed seat	1
65-15	R0201536-00	Rotating shaft	1
65-16	R0202532-00	Spring seat assembly	2
65-17	R0201537-00	Compression spring	2
65-18	R0201538-00	Damper	1
65-19	R0200534-00	Bolt M8 ×20	9
65-20	R0201539-00	Hexagon socket head cap screw	2
65-21	R0200536-00	Single coil spring lock washer, normal type	2
65-22	R0201541-00	Subplate	1
65-23	R0201542-00	Accelerator	1
65-24	R0200496-00	Lock nut M8	1
65-25	R0204490-00	Left operation assembly	1



Greenworks Tools
P.O. Box 1238
Mooreville, NC 28115

TOLL-FREE HELPLINE: 1-855-345-3934