

**Warning:**

- 1-Ride-on car is designed for children up 12-36 months old. Ride's weight must not exceed 25kgs. as there is insufficient strength to support overweight.
- 2-Product is designed to seat 1 child as a time to avoid injuries.
- 3-Parental guidance and supervision are strongly advised to ensure safe riding.
- 4-Adult assembly and installation of all parts are required to ensure safety.
- 5-Batteries to be handled by adults.
- 6-Take care of riding and avoid going near streets.crossroads,all traffic areas,swimming pools,and stairs.
- 7-Without regular check of the product,it will cause overturn or fall
- 8-Check to see occasionally that the nut and bolt on the steering wheel is tight and secure.
- 9-Dangers may present if the product is not correctly assembled.
- 10-Shoes must be worn in use.

# Item No: 653

## Activity Ride-On


Instructions Manual

**WARNING**  
**ADULT ASSEMBLY**  
**REQUEST.**
















**Battery Handling:**

- 1-Battery must be handled by adults only.
- 2-Always remove exhausted batteries.
- 3-Use AA size batteries only.
- 4-Alkaline batteries are recommended.
- 5-Always remove batteries when the unit is not going to be used for an extended period of time.
- 6-When replacing new batteries,always replace all batteries.
- 7-Do not mix old and new batteries.
- 8-Do not mix Alkaline,Standard(Carbon-Zinc),or Rechargeable(Nickel-Cadmium)batteries.
- 9-Do not dispose of batteries in fire,batteries may explode or leak.
- 10-Non-rechargeable batteries are not to be recharged
- 11-Rechargeable batteries are to be removed from the toy before being charged
- 12-Rechargeable batteries are only to be charged under adult supervision
- 13-Batteries are to be inserted with the correct polarity
- 14-The supply terminals are not to be shortcircuited

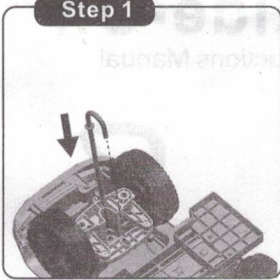
“Mercedes-Benz”  and the design of enclosed product are subject to intellectual property protection owned by Daimler AG.They are used by Ningbo Prince Toys Co.,Ltd. under license.

## COMPONENTS LIST

1.Body x1 	2.Steering wheel x1 	3.Backrest x1 
4.Safety bar x2 	5.Safety bar fixed part x1 	6.Thumb latch x2 
7.Push bar x1 	8.Connect tube x1 	9.Cup holder x1 
10.J-shaped stick x1 	11.M5X28 BOLT x4 (Two replacement pieces) 	12.M5 NUT x4 (Two for standby) 
13.Screw 3pcs (1 replacement piece) 		

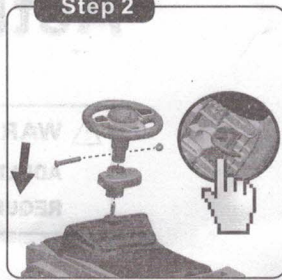
# INSTRUCTIONS

Step 1



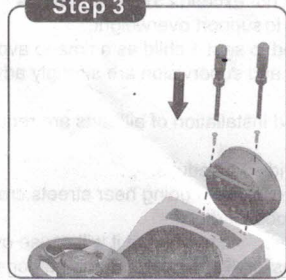
Insert the J-shaped stick into the front of the body, make sure the right position as picture show

Step 2



Loosen the bolt and nut in the steering wheel first, then insert the J-shaped stick into the safety-bar fixed part and steering wheel wheel, tight with the bolt and the nut.

Step 3



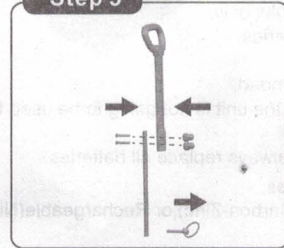
Place the spare tire in the rear of the car body, tight two screws with a screwdriver.

Step 4



Assemble the backrest into the rear of the body

Step 5



Connect the push bar and connect tube with two bolts and nuts as a whole push bar, then take out the snap ring in the end of the tube for standby.

# INSTRUCTIONS

Step 6



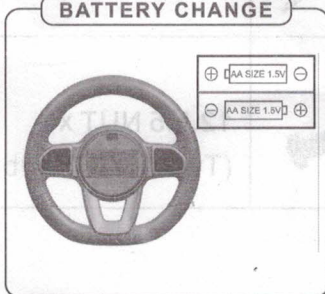
Insert whole push bar into the hole of the backrest, then turn the body over, insert the snap ring and tight as picture show.

Step 7



Assemble the safety bar into the backrest by the thumb latch, then insert the safety bar into the hole of safety bar fixed part.

## BATTERY CHANGE



Loosen the screw with a screwdriver, Put 2 AA size batteries in the battery house. Then tight the screw with a screwdriver.