

TRACTOR SUPPLY CO. CARGO BOX/COOLER COMBO

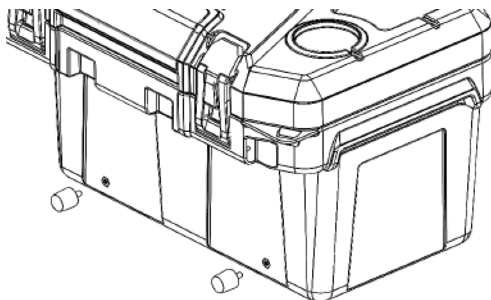


Instruction Manual

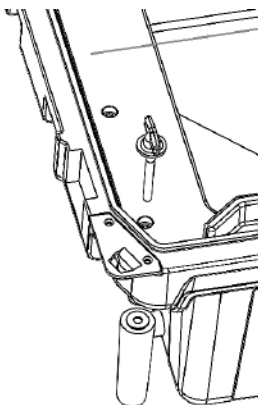
The Tractor Supply Co. Cargo Box/Cooler Combo is designed to fit most late model UTV's in the market today using the included mounting hardware. Please see instructions below for your application.

Installation: Polaris® Models – The Cargo Box/Cooler Combo is designed to fit most Polaris® Ranger and Polaris® General models that have the Lock and Ride® Bed Rail System.

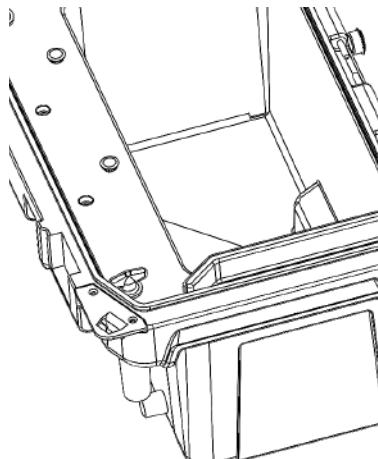
- 1) Install the (2) bumpers into the side of the box using the threaded holes. Tighten until they fit firmly against the side of the box.



- 2) Remove the wingnut assembly from one of the tapered anchors.
- 3) Place the threaded end through one of the (4) mounting holes on the edge of the box. For the most secure fit, use the two outer mounting holes if possible.

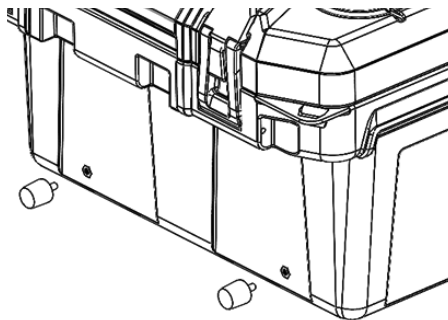


- 4) Place the tapered anchor beneath the mounting hole and re-install the wingnut assembly into the anchor. Turn the wingnut until the anchor assembly is tight against the base of the box.
- 5) Repeat steps 2-4 for the second anchor.
- 6) Place UTV Cargo Box /Cooler Combo in the desired location using the Lock and Ride® holes in the bed rail
- 7) Place the plastic plugs (included) into the mounting holes that were not used to help seal the box and keep out contaminants

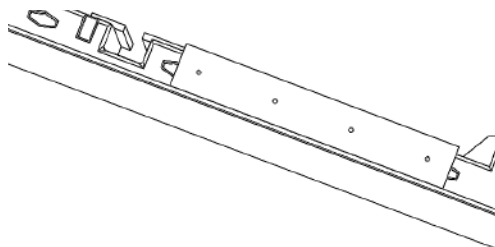


Installation: Universal Mount - for models other than Polaris® Lock and Ride® System and Kawasaki® with metal side rails

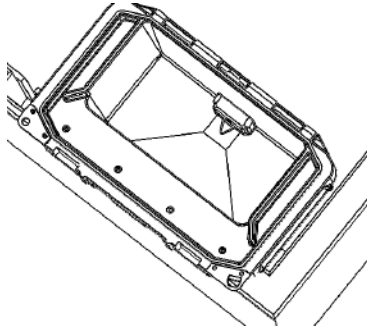
- 1) Install the (2) bumpers into the side of the box using the threaded holes. Tighten until they fit firmly against the side of the box.



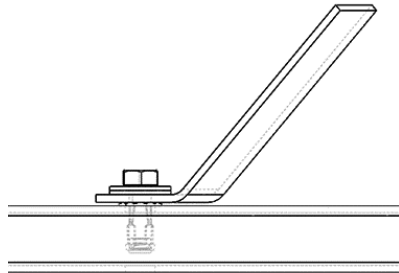
- 2) Determine which side of the UTV works best for your needs.
- 3) Using the provided paper drill template, locate and mark (2) places on the bed rail that can be drilled to install the jack screws which are included in the hardware kit.



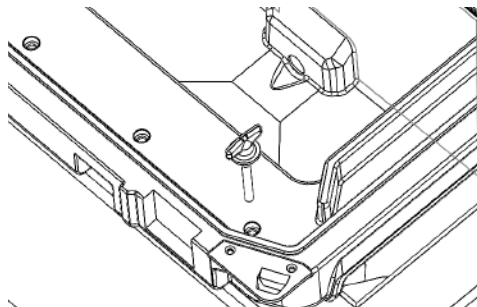
- 4) Place the UTV Cargo Box /Cooler Combo in the area to be drilled and align with the marked holes to ensure proper fitment and clearances with tailgate and other accessories you may have.



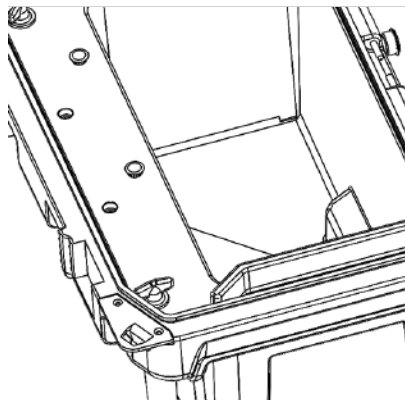
- 5) Using a 7/16" drill bit, drill (2) holes in the places that were identified in step 3.
- 6) To install the jack screws – **Assemble (2) washers on a M8 bolt that is 1" long minimum.** (Not included) and place the bolt through the hole in the assembly tool. Thread the jack nut onto the bolt until it is hand tight. Place the jack nut into one of the previously drilled holes completed in Step 5. Using gloves, hold the assembly tool flush to the bedrail while tightening the jack nut with a 1/2" drive socket until jack nut is fully compressed. (Be careful not to overtighten to avoid stripping the threads.) Unscrew the bolt and repeat this step for the other mounting hole.



- 7) Remove the wingnut assembly from the Polaris® tapered anchors. (Discard the tapered ends)
- 8) Place the UTV Cargo Box /Cooler Combo over the top of the jack nuts and align the mounting holes.
- 9) Insert the threads of the wing nut through the mounting hole and into one of the jack nuts installed in step 6. Tighten the wing nut until it firmly seats against the box. Follow the same procedure for the second wing nut.



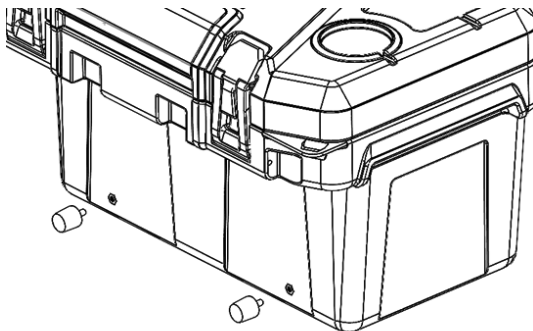
- 10) Place the plastic plugs (included) into the mounting holes that were not used to seal the box and keep out contaminants.



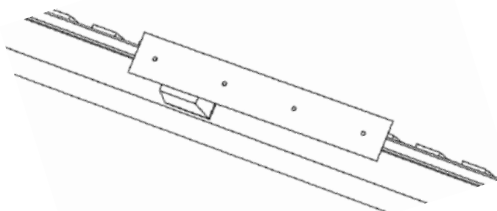
Installation: Universal Mount – For Kawasaki® models with metal side rails

- 1) Install the (2) bumpers into the side of the box using the threaded holes. Tighten until they fit firmly against the side of the box.

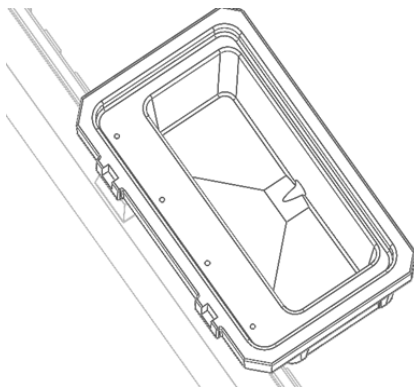
2)



- 3) Determine which side of the UTV works best for your needs.
4) Using the provided paper drill template, locate and mark (2) places on the bed rail that can be drilled to install the jack screws which are included in the hardware kit.

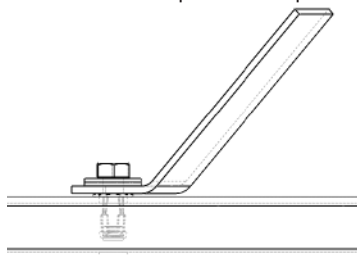


- 5) Place the UTV Cargo Box /Cooler Combo in the area to be drilled and align with the marked holes to ensure proper fitment and clearances with tailgate and other accessories you may have.

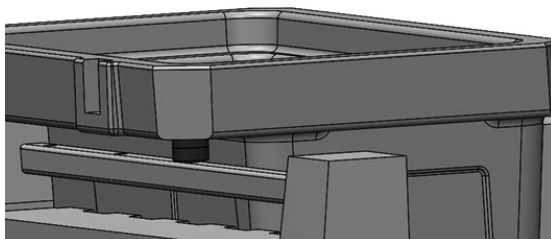


- 6) Using a 7/16" drill bit, drill (2) holes in the places that were identified in step 3 careful not to drill through the bottom wall of the metal rail.

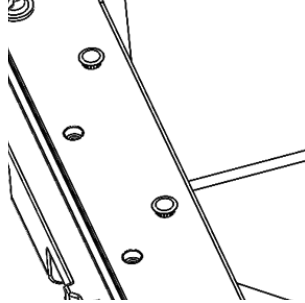
- 7) To install the jack screws – **Assemble (2) washers on a M8 bolt that is 1" long minimum.** (Not included) and place the bolt through the hole in the assembly tool. Thread the jack nut onto the bolt until it is hand tight. Place the jack nut into one of the previously drilled holes completed in Step 5. Using gloves, hold the assembly tool flush to the bedrail while tightening the jack nut with a 1/2" drive socket until jack nut is fully compressed. (Be careful not to overtighten to avoid stripping the threads.) Unscrew the bolt and repeat this step for the other mounting hole.



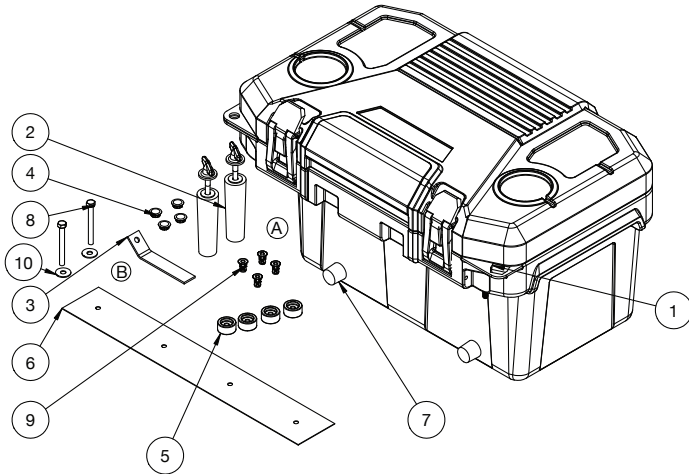
- 8) Place (2) of the isolation bumpers on top of the rail aligned with the jack nut and the mounting hole on the UTV Cargo Box /Cooler Combo Box.



- 9) Insert M8 mounting bolt (included) through the mounting hole and isolation bumpers and thread into the jack nut. Tighten with ratchet until snug.
- 10) Repeat step 7 for the other mounting hole.
- 11) Place the plastic plugs (included) into the mounting holes that were not used to seal the box and keep out contaminants



UTV storage box BOM list



ITEM NO.	PART NUMBER	DESCRIPTION	QTY.
1		UTV cargo cooler box	1
2		Tapered Anchors for Polaris® Lock and Ride®	2
3		Jack nut wrench	1
4		Plug mount hole	4
5		Bumper	4
6		drill template	1
7		bumper head bolt	2
8		Screw hex head 3 inch	2
9		JACK NUT	4
10		Washer steel	2



1736602

Distributed by: TRACTOR SUPPLY COMPANY
5401 VIRGINIA WAY, BRENTWOOD, TN37027
For customer support, call: 1-888-376-9601
www.TractorSupply.com
MADE IN CAMBODIA