



Model no.:	Stock no.:
Serial no.:	
Purchased from:	
Date purchased:	Date in service:

Operating Instructions and Parts Manual

AL100 Series Aluminum Hand Chain Hoists



1-ton model shown

JET
427 New Sanford Road
La Vergne, Tennessee 37086
Ph.: 800-274-6848
www.jettools.com


Part No. M-133051
Revision A 06/2021
Copyright © 2021 JET



1.0 IMPORTANT SAFETY INSTRUCTIONS

WARNING – To reduce risk of injury:

1. Read and understand the entire owner's manual before attempting assembly or operation.
2. Read and understand the warnings posted on the tool and in this manual. Failure to comply with all of these warnings may cause serious injury and/or damage to property.
3. Replace the warning labels if they become obscured or are missing.
4. Keep visitors a safe distance from the work area. **Keep children away.**
5. Give your work undivided attention. Looking around, carrying on a conversation and "horse-play" are careless acts that can result in serious injury.
6. Provide for adequate space surrounding work area and non-glare, overhead lighting.
7. This chain hoist is designed and intended for use by properly trained and experienced personnel only. If you are not familiar with the proper and safe operation of a chain hoist, do not use until proper training and knowledge have been obtained.
8. Do not use this chain hoist for other than its intended use. If used for other purposes, JET disclaims any real or implied warranty and holds itself harmless from any injury that may result from that use.
9. Do not use to lift people or loads over people.
10. Do not exceed the rated capacity of the chain hoist.
11. Do not use more than hand power to pull the hand chain.
12. Do not use the load chain as a sling; this may cause damage to the chain.
13. Always inspect the chain hoist for damage prior to use. If the chain hoist is damaged, do not use until it has been repaired or replaced.
14. Do not use more than one chain hoist to lift or move a load. If this is unavoidable, each chain hoist must have the same capacity as the load to be moved.
15. Never allow the load chain to "set" over sharp edges. All lifts must be made with straight chain that is free of obstacles.
16. If the hand chain is difficult to operate, then the load exceeds the capacity of the chain hoist. Select a chain hoist of larger capacity.
17. Do not use a chain hoist unless load is centered between top and bottom hooks.
18. Always take time to study the job to be performed and choose the safest method. Do not place yourself or other people in an unsafe position.
19. Stand to one side of the load being lifted and make sure no one else is standing underneath when lifting a load. Should a load slip, it will descend at a high rate of speed and can cause serious injuries to anyone standing directly underneath.
20. Leave all internal maintenance to a qualified JET Service Center.
21. Replace the chain with factory replacement chain only. Do not use any other type of chain.
22. If welding near the hoist, do not allow the chain or hook to be touched by a live electrode. Prevent weld splatter upon the chain.
23. Never use the chain hoist if either hook is stretched, deformed, or has a broken or missing safety latch. Always replace the safety latch and/or the hook before placing the chain hoist back into service.
24. Understand and follow all procedures as set forth in American National Standards titled "*Performance Standard for Hand Chain Manually Operated Chain Hoists.*" ANSI/ASME HST-2; and "*Overhead Hoists (Underhung),*" ANSI/ASME B30.16. These standards are available through the American Society of Mechanical Engineers, www.ASME.org

 **WARNING:** This product can expose you to chemicals including lead, which is known to the State of California to cause cancer and birth defects or other reproductive harm. For more information go to <http://www.p65warnings.ca.gov>.

Familiarize yourself with the following safety notices used in this manual:

CAUTION This means that if precautions are not heeded, it may result in minor injury and/or possible tool damage.

WARNING This means that if precautions are not heeded, it may result in serious injury or possibly even death.

2.0 Table of Contents

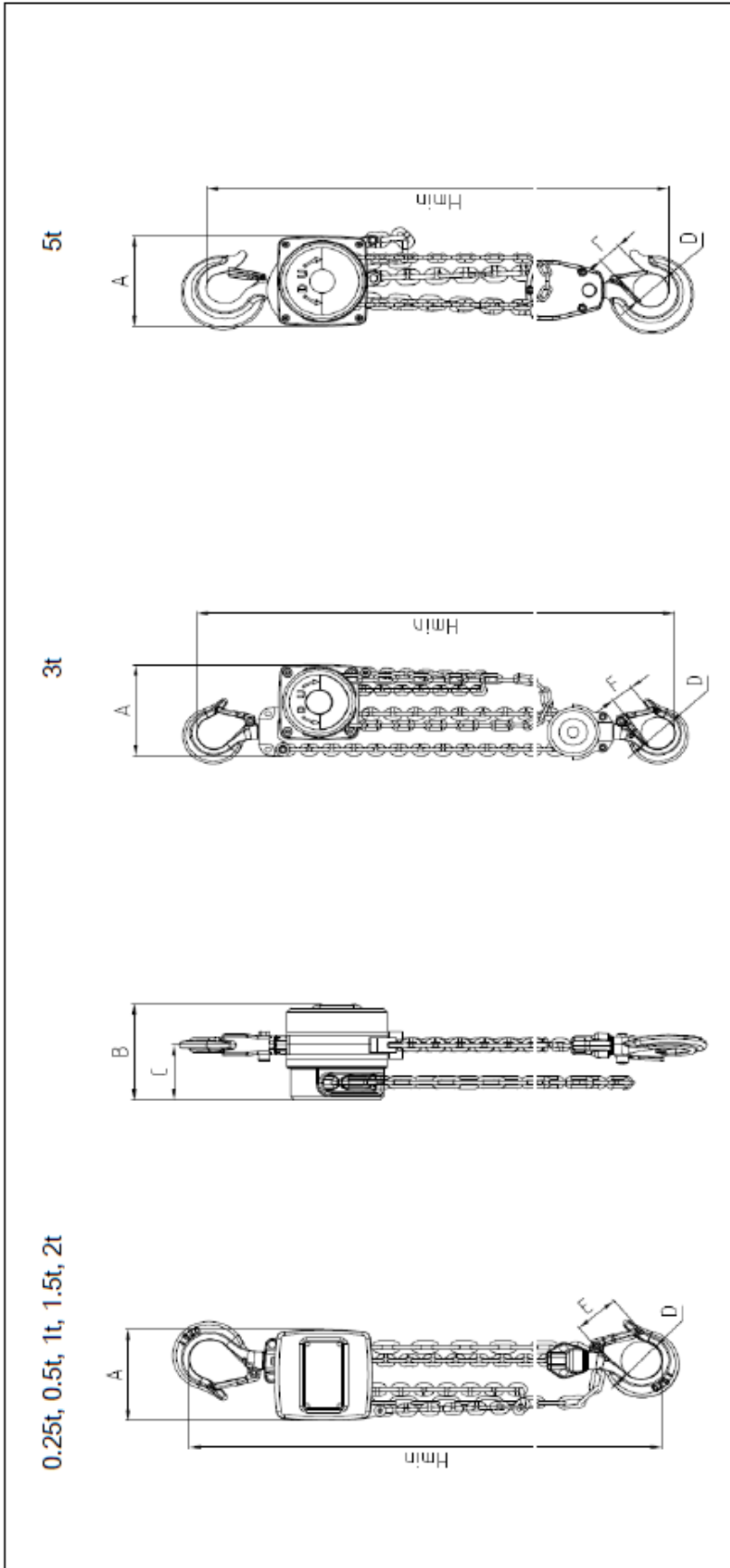
1.0 IMPORTANT SAFETY INSTRUCTIONS.....	2
2.0 Table of Contents.....	3
3.0 Introduction.....	4
4.0 Specifications.....	5
5.0 Using the Chain Hoist.....	6
5.1 Prior to Operation.....	6
5.2 Hooking the Load.....	7
5.3 Raising the Load.....	7
6.0 Hand Chain – Disassembling and Installing.....	8
7.0 Load Chain and Bottom Hook.....	9
7.1 Load Chain Inspection (all models).....	9
7.2 Load Chain Removal (all models).....	9
7.3 Attaching Load Chain to Load Chain Sprocket (all models).....	9
7.4 Load Chain and Bottom Hook Installation.....	10
7.5 Chain Installation: 0.5- to 2-Ton Hoists.....	10
7.6 Chain Installation: 3- to 5-Ton Hoists.....	10
8.0 Overload Protection.....	11
9.0 Inspection and Maintenance.....	11
10.0 Load Limits.....	12
10.1 Load Chain.....	12
10.2 Hooks (Top & Bottom).....	12
11.0 Troubleshooting JET® Aluminum Hand Chain Hoists.....	13
12.0 Timing Marks for Gear Replacement.....	14
13.0 Replacement Parts.....	14
13.1.1 AL100 Aluminum Chain Hoist Parts Breakdown (0.25 – 3 ton).....	15
13.1.2 Parts List: AL100-050 Aluminium Chain Hoist (0.5 Ton).....	16
13.1.3 Parts List: AL100-100 Aluminium Chain Hoist (1 Ton).....	17
13.1.4 Parts List: AL100-150 Aluminium Chain Hoist (1.5 Ton).....	18
13.1.5 Parts List: AL100-200 Aluminium Chain Hoist (2 Ton).....	19
13.1.6 Parts List: AL100-300 Aluminium Chain Hoist (3 Ton).....	20
13.1.7 AL100 Aluminum Chain Hoist Parts Breakdown (5 ton).....	21
13.1.8 Parts List: AL100-500 Aluminium Chain Hoist (5 Ton).....	22
14.0 Warranty and Service.....	23

3.0 Introduction

This manual is provided by JET covering the safe operation and maintenance procedures for a JET Model AL100 Series Chain Hoist. This manual contains instructions on installation, safety precautions, general operating procedures, maintenance instructions and parts breakdown. This hoist has been designed and constructed to provide consistent, long-term operation if used in accordance with instructions set forth in this manual. If there are any questions or comments, please contact either your local supplier or JET. JET can also be reached at our web site: www.jettools.com.

The AL100 Chain Hoist complies with ANSI/ASME B30.16 and HST-2 standards.

4.0 Specifications



Stock Number	Model	Rated Capacity (ton)	NO. of Falls	Load Chain (mm)	Hand Chain (mm)	Pounds of pull to lift capacity	Req'd Hand Chain (ft.) to lift load 1 foot	Net Weights (lbs)	Dimensions						
									A (in)	B (in)	C (in)	D (in)	E (in)	F (in)	H min (in)
	AL100-25-*	1/4	1	3.2 x 9	2.5 x 12	33	25	5.62	2-15/16	3-1/16	1-3/4	1-1/4	1-3/8	13/16	8-7/8
133051	AL100-50-*	1/2	1	4.3 x 12	3.5 x 16	42	40	10.43	3-5/8	3-1/2	2	1-3/8	1-11/16	15/16	10-7/16
133110	AL100-100-*	1	1	5.6 x 15.7	3.5 x 16	53	61	14.82	4-5/16	4	2-3/16	1-11/16	1-15/16	1-1/16	11-5/8
133121	AL100-150-*	1-1/2	1	7.1 x 19.9	4.8 x 22	72	71	27.39	5-1/8	4-3/4	2-11/16	1-11/16	2-1/16	1-1/4	13-13/16
133210	AL100-200-*	2	1	8 x 24	4.8 x 22	75	90	33.07	5-11/16	5-7/16	3-1/8	1-13/16	2-5/16	1-3/8	15-3/8
133310	AL100-300-*	3	2	7.1 x 19.9	4.8 x 22	76	143	39.14	6-1/2	4-3/4	2-11/16	2	2-7/16	1-7/16	18-1/2
133510	AL100-500-*	5	2	9 x 27	4.8 x 22	82	191	66	6-11/16	6-5/16	6-11/16	2-1/2	-	1-9/16	22-13/16

* The above model and stock numbers are representative; chain is available in other lengths. Specify required chain length when ordering.

The above specifications were current at the time this manual was published, but because of our policy of continuous improvement, JET reserves the right to change specifications at any time and without prior notice, without incurring obligations.

5.0 Using the Chain Hoist

5.1 Prior to Operation

1. Support for the hoist may be hook, clevis pin, trolley, or beam clamp. Whatever method of suspension is chosen, the support components **must** be rated equal to, or greater than the capacity of the chain hoist.
2. If the chain hoist has not been used for an extended period of time, check for proper operation before putting into service.
3. The brake mechanism must be kept clean and free from dirt, water, and oil. Never allow oil to penetrate the brake mechanism. Always keep your chain hoist clean and store in a clean, dry location.
4. Although oiling the chain is not mandatory, a light coat of 30-weight oil applied periodically to the chain will create easier operation and prolong the life of the chain.
5. Check the chain for damage and elongation. Replace damaged chain before using the chain hoist.

The load chain supplied with your JET chain hoist is designed, manufactured, and tested for proper fit and durability. Over a period of time, the chain may need to be replaced. For your own safety, use factory replacement chain only.

⚠WARNING Use of other than factory replacement chain may cause serious injury and/or damage to the hoist.

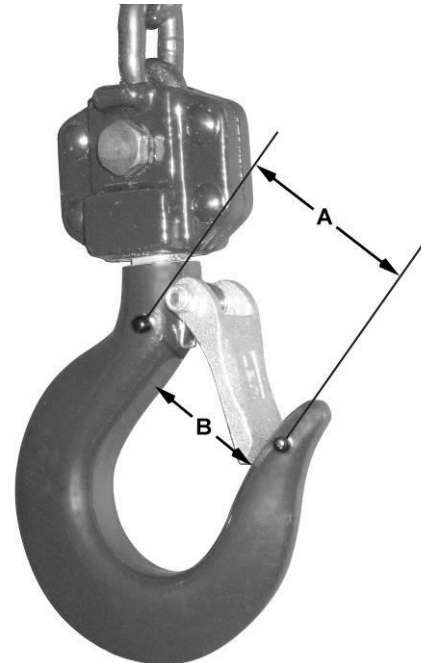


Figure 1

6. The top and bottom hooks on your JET chain hoist are designed to open to warn of an overload. Both top and bottom hooks for 0.5 to 5 ton hoists have two indicator points (A, Figure 1) cast into the hook for measurement. Refer to Table 2 (page 13) to determine if a hook needs to be replaced.

Hooks for 10- and 20-ton hoists do not have indicator points. Measurements are made at the jaw opening (B, Figure 1).

7. It is important to check top and bottom hooks for proper opening. If the safety latch no longer contacts the hook opening, replace the hook. **Never side load the top or bottom hook; this practice is dangerous and could lead to serious injury.**
8. If the vertical angle at the neck of the bottom or top hook reaches 10°, replace the hook (see Figure 2).

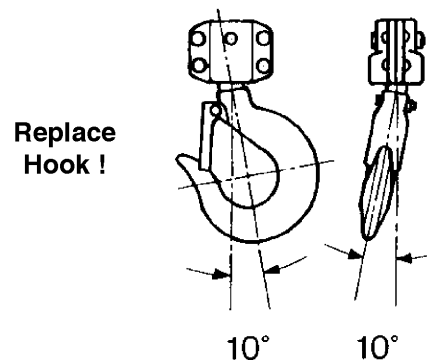


Figure 2

5.2 Hooking the Load

1. Secure the upper hook.
2. Place the bottom hook securely into the object to be lifted.
3. Place ropes or chain in the center of the bottom hook, making sure the safety latch is secure. Never load the hook in front of the safety latch. See Figure 3.
4. Avoid lifting one load with two hoists. If this is unavoidable, apply equal weight to both hoists and use hoists with the proper lift capacity. **Capacity of each hoist must be equal to the total load to be lifted.**
5. Check that the chain is not twisted at the bottom hook. All welds should face the same direction (Figure 4).
6. For hoists with two or more falls of chain, make sure the bottom hook is not turned over. This may cause the chain to twist.

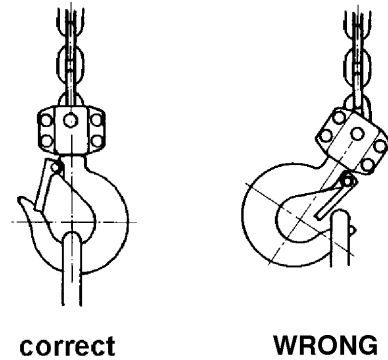


Figure 3

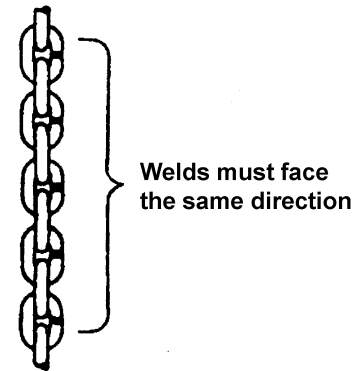


Figure 4

5.3 Raising the Load

To raise the load, pull the right side of the hand chain (A, Figure 5) clockwise.

To lower the load, pull the left side of the hand chain (B, Figure 5) counterclockwise.

Important: Make sure the hoist has an adequate length of load chain to raise or lower the load in a safe manner. Do not attempt to lower the hoist beyond its limit.

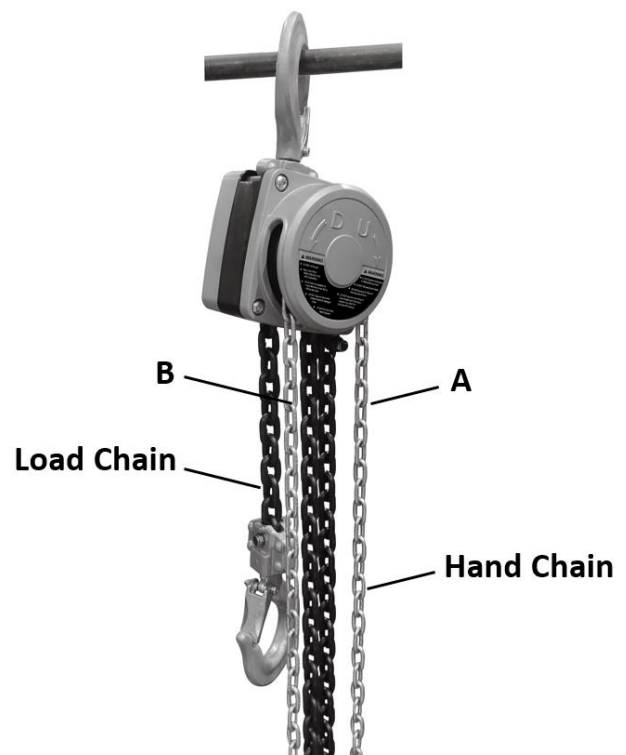


Figure 5

6.0 Hand Chain – Disassembling and Installing

To open the master link (part #7 on the parts list in the “Replacement Parts” section) on hand chain in order to increase or shorten:

To change the length of the *hand chain*, the master link must be open and hand chain links *added* to increase the overall length or links *removed* to decrease the length. This is done as follows:

1. Insert the master link into the vise (Figure 6).
2. Position the link vertically at the edge of the vise with the level of the separation above the top edge of the vise jaw (Figure 7).
3. Tighten the vise jaw.
4. Using an adjustable wrench, twist the link horizontally from front to back (Figure 8). Open just far enough to insert or remove a second chain link.

Note: Chain length is now ready to lengthen or shorten.

5. Insert or remove the second end link at the opening in the first end link.
6. Using an adjustable wrench, twist the link horizontally until the link is in the original closed position (Figure 9).

CAUTION Do not push the link inward from the curved ends. This will distort the link. Check that the link is closed and free of twist.

7. If installing entire new chain, insert the end of the hand chain into the groove at the top of the hand chain wheel (Figure 10). Rotate the hand chain wheel and pull the chain through.
8. Ensure the separation point of the master link is closed and both sides well-aligned.

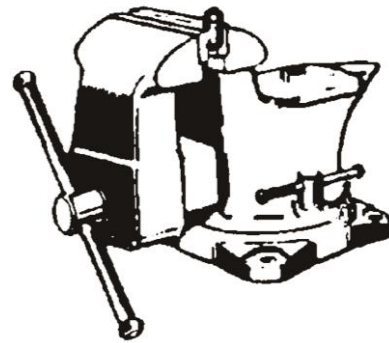


Figure 6

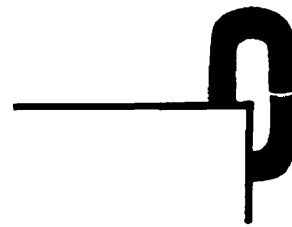


Figure 7

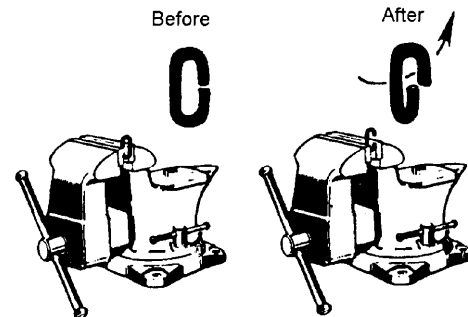


Figure 8

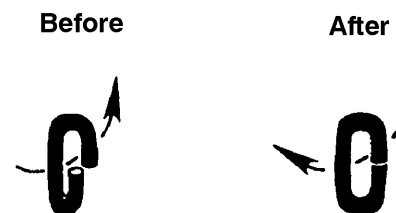


Figure 9

7.0 Load Chain and Bottom Hook

7.1 Load Chain Inspection (all models)

Over time, the load chain will wear or elongate. This can cause damage to the hoist, breakage, or non-engagement of the load sheave.

⚠WARNING Do not operate the hoist with a twisted, kinked or damaged load chain. Do not splice the load chain. Check the chain for excessive wear or stretch. Failure to comply may cause serious injury.

1. Test the hoist under load in both the lifting and lowering directions, observing the operation of chain and sprockets. Chain should feed smoothly into and away from the sprockets.
2. If the chain binds, jumps, or is noisy, make sure it is clean and properly lubricated. If the trouble persists, inspect the chain and mating parts for wear, distortion, or other damage.
3. Clean the chain before inspection. Examine for gouges, nicks, weld splatter, corrosion, and distorted links. Slacken the chain and move adjacent links to one side, looking for wear at the contact points. If you see wear or suspect stretching, measure the chain as follows:
 - Select an unworn, unstretched length of chain (i.e. at the slack end).
 - Suspend the chain vertically under tension and, using a caliper type gauge, measure the outside length of several links about 12 to 24 inches.
 - Measure the same number of links in used sections and calculate the percentage of the increase in length.
4. If the length of used chain exceeds 2-1/2 percent of the unused chain, replace the chain. (See "Load Limits" on page 13 for specific link measurements.)

⚠WARNING Do not add to the load chain. Replace the entire chain. Failure to comply may cause serious injury.

7.2 Load Chain Removal (all models)

Remove the old load chain as follows while referring to Figure 11:

1. Remove the *cotter pin* (A) and the *chain anchor pin* (C) on the *chain anchor* (D), allowing the end of the chain to fall free.
2. Pull the *hand chain* (Fig. 5) until the load chain is completely removed from the gear assembly.

7.3 Attaching Load Chain to Load Chain Sprocket (all models)

Install the new load chain onto the load chain sprocket as follows, referring to Figure 10:

1. Position the hoist body upside down, so that the outlets for the load chain are showing.
2. Insert the load chain (B) into outlet (C) until resistance from the sprocket grooves is felt, so that the chain will wind up and back over the sprocket. *Welds in the chain must face away from the sprocket. Make sure the first link inserted is parallel to the side plates.*
3. Rotate the hand chain wheel clockwise in the "lift"/U direction, or pull the hand chain in the same direction, so that the load chain falls into the sprockets and comes out from the outlet (D). If the load chain does not engage, rotate the hand chain wheel counterclockwise in the "lower"/D direction and perform the operation again. The load sprocket is not visible from the outlets and the load chain cannot be guided into it, so several attempts may be required before the load chain engages.

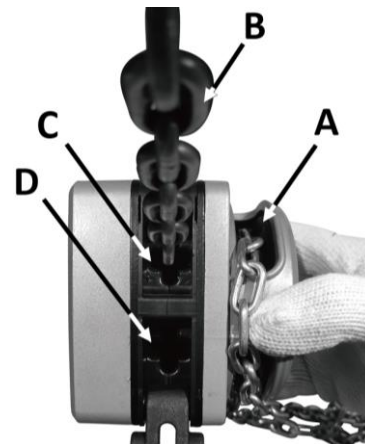


Figure 10

Referring to Figure 11:

4. Insert one end of the *chain link* (B) into the *chain anchor* (D).
5. Insert the *chain anchor pin* (C) through the *chain anchor* (D) and *chain link* (B) and secure with the *cotter pin* (A).

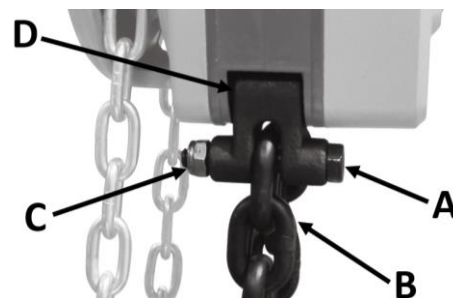


Figure 11

Continue with *Load Chain and Bottom Hook Installation*, proceeding to the section that applies to your hoist: *1/2- to 2-Ton hoists* or *3- to 5-Ton hoists*.

7.4 Load Chain and Bottom Hook Installation

The following procedure assumes that the *load chain* has been attached to the *chain anchor* (A, Figure 12) and fed through the *load chain sprocket* as described in the previous section. This section completes the load chain and bottom hook installation.

7.5 Chain Installation: 0.5- to 2-Ton Hoists

Referring to Figure 12:

1. Remove the *lock nut* and *bolt* from the *lower hook* (D).
2. Insert the last *chain link* (C) into the lower hook slot.
3. Re-insert the bolt through the lower hook slot and chain link.
4. Re-attach the lock nut to the bolt and tighten.

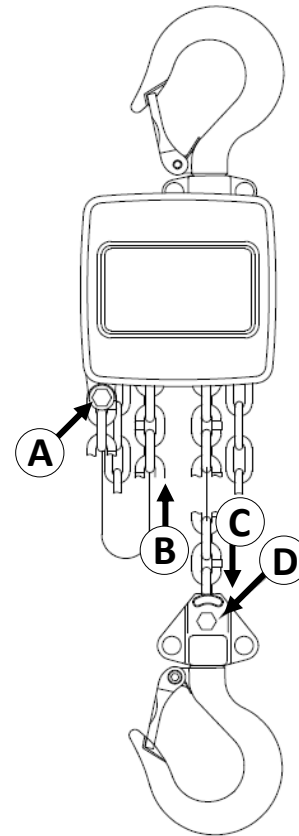


Figure 12

7.6 Chain Installation: 3- to 5-Ton Hoists

Referring to Figure 13:

1. After installing the load chain into the *load chain sprocket* (B), run the remaining chain through your hand to remove any twist. The last link of the chain must be in the same direction as the first. If not, cut off the last link.
2. Insert the last link into the pulley of the lower hook (C).
3. Pull the load chain through and up from the underside of the *pulley* (C, D).
4. Remove the cotter pin and chain anchor pin in the *upper hook slot* (E).
5. Insert the last link into the upper hook slot.
6. Check that the load chain is not twisted.
7. Re-position the chain anchor pin back through the upper hook slot and the last chain link and secure with the cotter pin.

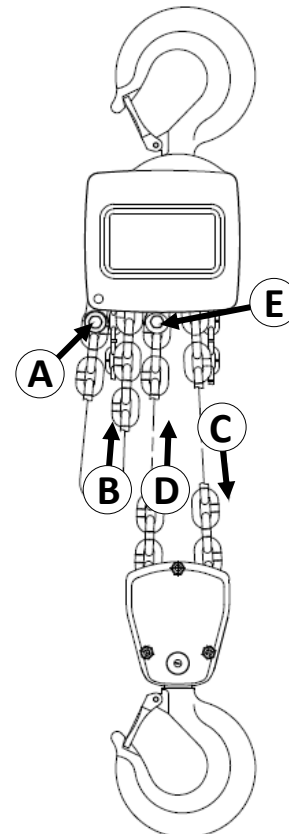


Figure 13

8.0 Overload Protection

All models of the AL100 Aluminium Hand Chain Hoist have overload protection in the form of a slip clutch. For 0.25 and 0.5 ton models, the slip clutch is effective at 180-200% \pm 20% of the rated hoist capacity. For all other models, the slip clutch is effective at 160% \pm 20% of the rated hoist capacity.

The slip clutch will allow the hand chain pulley to move without lifting the load, if the load is too heavy for the hoist. The slip clutch has been pre-adjusted at the factory and should not require any adjustment by the user. If future adjustment or repair to the slip clutch should ever be needed, this must be done by qualified personnel.

9.0 Inspection and Maintenance

Read and follow ANSI Inspection and Maintenance Instructions. Know the meaning of Frequent Inspection, Periodic Inspection, Normal Service, Heavy Service, and Severe Service. It is the customer's responsibility to understand and follow all ANSI and JET inspection and maintenance instructions.

▲WARNING All repairs and adjustments are to be performed by trained and experienced personnel using procedures that are approved for the hoist system being serviced. Failure to comply may cause serious injury.

▲WARNING All safety related deficiencies discovered in the inspection are to be corrected before the hoist is to be placed back into service. Failure to comply may cause serious injury.

▲WARNING Check for internal damage whenever external damage has occurred. Failure to comply may cause serious injury.

1. Clean hoist after each use and oil lightly. NOTE: Do not get oil on brake system.
2. Do not drop or drag the hoist.
3. Store the hoist in a clean and dry environment.
4. While not mandatory, periodically oiling the chain with SAE 30 oil will increase its life.
5. Leave all repairs and adjustments of internal parts to qualified repair personnel.
6. Inspect the load chain and the lower hook after lifting a maximum weight load.
7. This hoist uses special alloy hoisting chain and does not interchange with any other manufacturer. All replacement chain must be purchased from your JET distributor or from JET directly by calling 800-274-6848.
8. Check and inspect the brake system frequently.
9. Annually, the hoist should be disassembled, inspected, and cleaned by trained and experienced personnel only. Contact a JET authorized service center by calling your dealer or visiting our web site at jettools.com.
10. After servicing, test the hoist with no load, then test the hoist with a load.

10.0 Load Limits

10.1 Load Chain

Capacity	5 Links Normal	5 Links Limit
0.25 ton	1.772"	1.823"
0.5 ton	2.362"	2.433"
1 ton	3.110"	3.201"
1.5 ton	3.937"	4.051"
2 ton	4.724"	4.866"
3 ton	3.937"	4.051"
5 ton	5.315"	5.476"

Table 1

Carefully inspect the entire load chain. As illustrated in Figure 14, measure five consecutive links with callipers to measure the length. Check every three feet and especially where excessive wear is indicated. Any load chain that shows noticeable deformation or heat influence must be replaced with a new one. Never extend load chain by welding a second piece to the original.

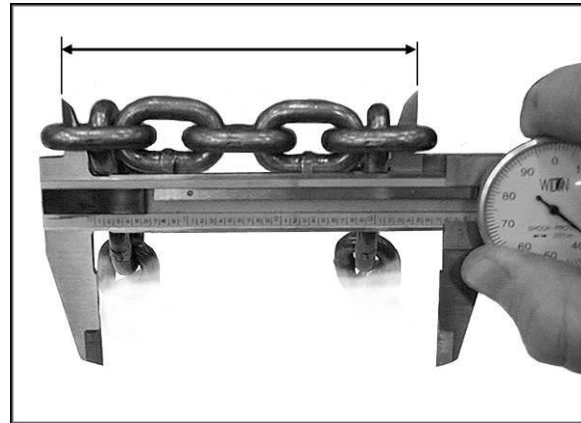


Figure 14

10.2 Hooks (Top & Bottom)

Capacity	A Norm	A Limit	B Norm	B Limit
0.25 ton	1.398"	1.469"	--	--
0.5 ton	1.614"	1.697"	--	--
1 ton	1.965"	2.067"	--	--
1.5 ton	2.059"	2.165"	--	--
2 ton	2.358"	2.480"	--	--
3 ton	2.469"	2.598"	--	--
5 ton	--	--	2.047"	2.150"

Table 2

See Figure 15. Replace the hook when the "A" measurement is wider than "A" Limit in the table above. Never heat-treat the hook or attach anything to the hook by welding.

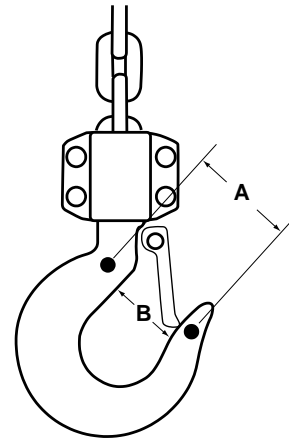


Figure 15

11.0 Troubleshooting JET® Aluminum Hand Chain Hoists

Symptom	Possible Cause	Correction ¹
Hoist will not move in either direction.	Hand chain wheel is jammed, worn, or damaged.	Inspect and clean hand chain and hand chain wheel. Replace if worn or damaged.
	Hand chain slips over wheel.	Check hand chain wheel for damage or worn cogs. Replace if needed.
	Load sheave or load chain is jammed.	Inspect and clean. Check for chain link deformation. Replace elements if needed. Oil load chain for optimal performance.
	Load gear/spur gears jammed due to obstruction or damage.	Inspect, clean, and re-grease gears. Replace if worn or damaged.
	Bearing failure.	Contact JET service center for disassembly and replacement of bearings.
Hoist will not lift load, or lifts with great difficulty.	Load too heavy for hoist.	Use a hoist with proper capacity for load.
	Slip clutch overload protection has been triggered due to excess load capacity.	Disengage overload to reset hoist (see instruction manual). Only lift loads within hoist capacity. Inspect hoist elements for damage after overload has occurred.
	Load chain is binding.	Inspect and clean load chain, load sheave, and stripper. Make sure chain is not twisted. Oil chain for optimal performance. Replace elements if deformation or other damage is found.
	Load sheave is jammed.	Inspect and clean. Replace load sheave if damaged or excessively worn.
	Ratchet disc teeth, pawls or pawl springs worn or damaged.	Inspect elements and replace if needed.
	Bearing failure.	Contact JET service center for disassembly and replacement of bearings.
Hoist will not lower load, or lowers with great difficulty.	Load chain is binding due to obstruction, damage or wear.	Inspect and clean load chain and load sheave. Keep load chain lightly oiled. Replace chain if damaged or worn.
	Brake/ratchet disc not releasing due to obstruction or damage.	Inspect and clean ratchet and pawl assemblies.
Load drifts downward while suspended.	Load beyond capacity of hoist.	Use properly rated hoist for load.
	Ratchet disc teeth, pawls or pawl springs worn or damaged.	Inspect elements and replace if needed.
	Brake disc(s) worn or dirty.	Inspect brake disc(s) for wear or damage. Consult thickness tolerances in manual, replace if needed.
Load chain jumps, or makes excessive noise.	Load chain is dirty or dry.	Inspect and clean load chain and load sheave. Oil chain for optimum performance.
	Load chain kinked or twisted.	Remove twists in chain.
	Load chain is worn or deformed, or otherwise damaged.	Replace chain (use JET-authorized chain only).
	Chain catching in load sheave.	Inspect and clean chain and sheave. Check for chain deformations.
Hook latch not closing.	Latch is bent or broken.	Replace latch.
	Hook is deformed preventing proper latch operation.	Replace hook assembly.

¹ Some corrections may need to be performed by a JET authorized service center

12.0 Timing Marks for Gear Replacement

If the gears on the AL100 hoist need replacement or removal for any reason, make sure they are re-installed correctly. Figure 16 shows the proper orientation of the timing marks when meshing the gears.

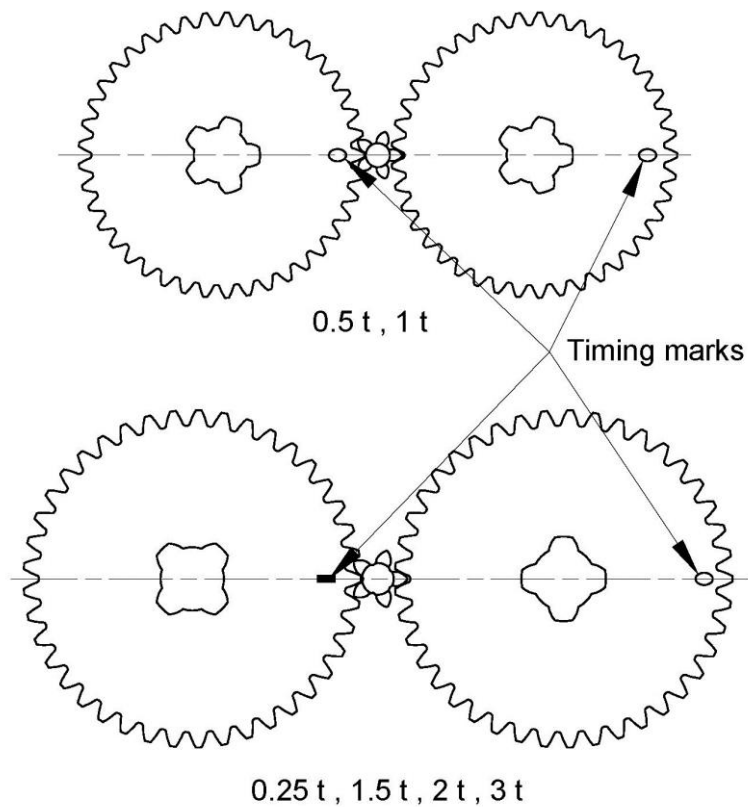


Figure 16

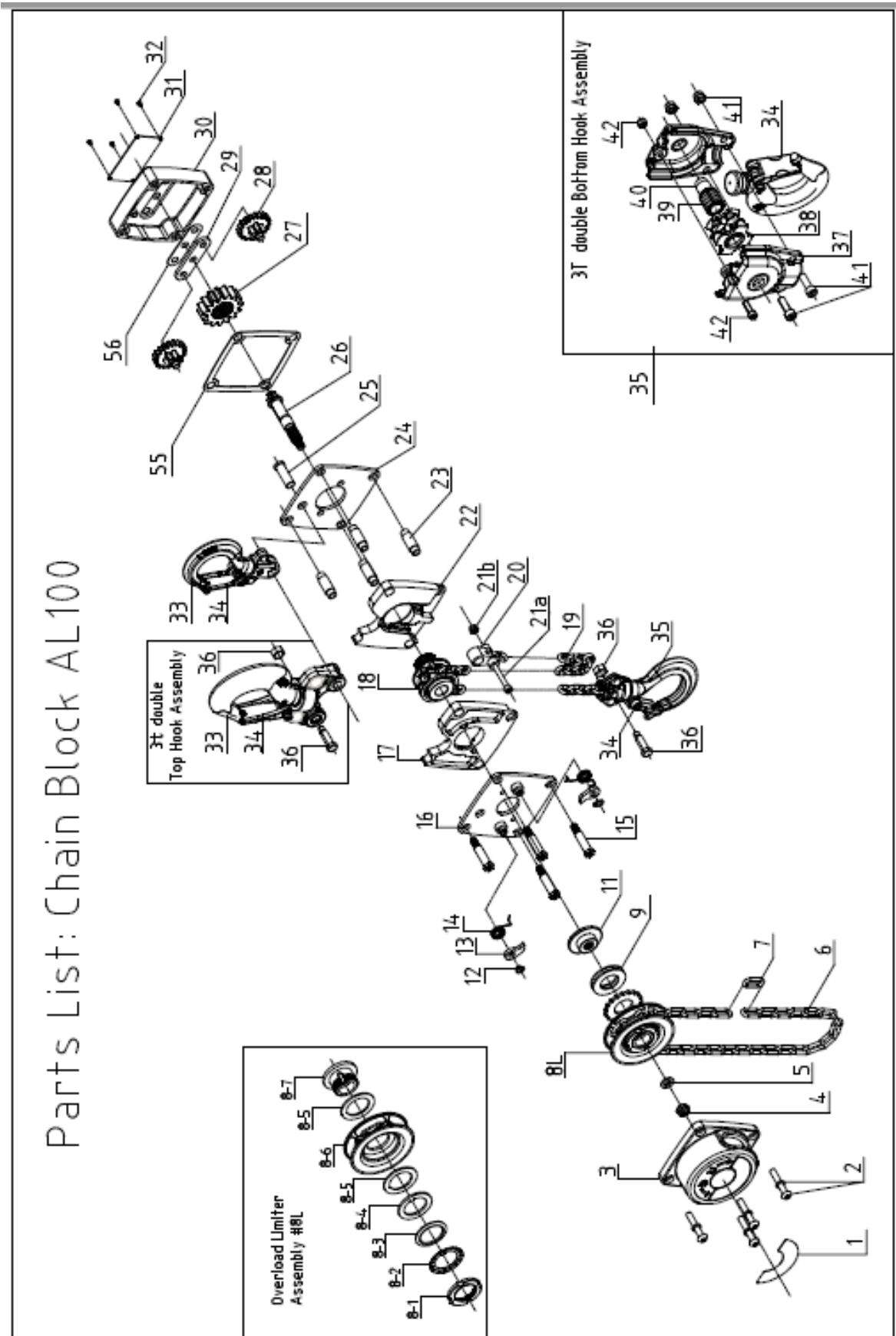
13.0 Replacement Parts

Replacement parts are listed on the following pages. To order parts or reach our service department, call 1-800-274-6848, Monday through Friday (see our website for business hours, www.jettools.com). Having the Model Number and Serial Number of your machine available when you call will allow us to serve you quickly and accurately.

Non-proprietary parts, such as fasteners, can be found at local hardware stores, or may be ordered from JET.

Some parts are shown for reference only, and may not be available individually.

13.1.1 AL100 Aluminum Chain Hoist Parts Breakdown (0.25 – 3 ton)



13.1.2 Parts List: AL100-050 Aluminium Chain Hoist (0.5 Ton)

Parts listed under each assembly are parts that make up that assembly (sold as an assembly only).

Index No.	Part No.	Description	Size	Qty
1.....	AL100-50-01	Warning Tag		1
2.....	AL100-25-02	Screw & Washer	M5x12; 5mm	4
3.....	AL100-50-03	Hand Wheel Cover		1
4.....	GB8891-6.....	Lock Nut	M6	1
5.....	TS-1550041.....	Washer	6 mm	1
6.....	AL100-50-06	Hand Chain – specify length	3.5x16 mm.....	1
7.....	AL100-50-07	Hand Chain Connecting Link.....		1
8L.....	AL100-50-08L	Hand Wheel with Overload Protection		1
9.....	AL100-50-09	Fused Brake Disc		1
11.....	AL100-50-11	Brake Hub.....		1
12.....	GB8941-06.....	Retainer Ring	6 mm	2
13.....	JLH25-21	Pawl.....		2
14.....	JLH25-20.....	Pawl Spring.....		2
15.....	AL100-50-15	Stay Bolt		4
16.....	AL100-50-16	Side Plate A Assembly		1
17.....	AL100-50-17	Load Chain Guide A		1
18.....	AL100-50-18	Load Sheave		1
19.....	JLH50-48.....	Load Chain.....	4.3x12 mm.....	1
20.....	AL100-50-20	Anchor Hanger		1
21.....	AL100-50-21	Anchor Pin (21a) / Nut (21b)	M4	1
22.....	AL100-50-22	Load Chain Guide B		1
23.....	AL100-50-23	Stay Bolt Sleeve		4
24.....	AL100-50-24	Side Plate B.....		1
25.....	AL100-50-25	Top Hook Shaft.....		1
26.....	AL100-50-26	Driving Shaft.....		1
27.....	AL100-50-27	Load Gear		1
28.....	AL100-50-28	Disc Gears.....		2
29.....	AL100-50-29	Gear Plate.....		1
30.....	AL100-50-30	Gear Case		1
31.....	AL100-50-31	Name Plate.....		1
32.....	GB827-2-4	Rivet	2x4 mm.....	4
33.....	AL100-50-33	Top Hook Assembly.....		1
34.....	JLH50-2	Safety Latch Assembly.....		2
35.....	AL100-50-35	Bottom Hook Assembly.....		1
36.....	JLH50-5G	Load Pin & Nut		1
55.....	AL100-50-55	Gasket		1
56.....	AL100-50-56	Shim.....		1

Note: When ordering replacement chain (Index #6, #19), specify length.

13.1.3 Parts List: AL100-100 Aluminium Chain Hoist (1 Ton)

Parts listed under each assembly are parts that make up that assembly (sold as an assembly only).

Index No.	Part No.	Description	Size	Qty
1	AL100-100-01	Warning Tag		1
2	AL100-100-02	Screw & Washer	M6x12; 6mm	4
3	AL100-100-03	Hand Wheel Cover		1
4	GB8891-6	Lock Nut	M6	1
5	TS-1550041	Washer	6 mm	1
6	AL100-50-06	Hand Chain – specify length	3.5x16 mm	1
7	AL100-50-07	Hand Chain Connecting Link		1
8L	AL100-100-08L	Hand Wheel with Overload Protection		1
9	AL100-100-09	Fused Brake Disc		1
11	AL100-100-11	Brake Hub		1
12	GB8941-06	Retainer Ring	6 mm	2
13	JLH25-21	Pawl		2
14	JLH25-20	Pawl Spring		2
15	AL100-100-15	Stay Bolt		4
16	AL100-100-16	Side Plate A Assembly		1
17	AL100-100-17	Load Chain Guide A		1
18	AL100-100-18	Load Sheave		1
19	JLH80-49	Load Chain	5.6x15.7 mm	1
20	AL100-100-20	Anchor Hanger		1
21	AL100-100-21	Anchor Pin (21a) / Nut (21b)	M6	1
22	AL100-100-22	Load Chain Guide B		1
23	AL100-100-23	Stay Bolt Sleeve		4
24	AL100-100-24	Side Plate B		1
25	AL100-100-25	Top Hook Shaft		1
26	AL100-100-26	Driving Shaft		1
27	AL100-100-27	Load Gear		1
28	AL100-100-28	Disc Gears		2
29	AL100-100-29	Gear Plate		1
30	AL100-100-30	Gear Case		1
31	AL100-100-31	Name Plate		1
32	GB827-2-4	Rivet	2x4 mm	4
33	AL100-100-33	Top Hook Assembly		1
34	JLH100-37-1	Safety Latch Assembly		2
35	AL100-100-35	Bottom Hook Assembly		1
36	AL100-100-36	Load Pin & Nut	M6	1
55	AL100-100-55	Gasket		1
56	AL100-100-56	Shim		1

Note: When ordering replacement chain (Index #6, #19), specify length.

13.1.4 Parts List: AL100-150 Aluminium Chain Hoist (1.5 Ton)

Parts listed under each assembly are parts that make up that assembly (sold as an assembly only).

Index No.	Part No.	Description	Size	Qty
1.....	AL100-150-01	Warning Tag		1
2.....	AL100-100-02	Screw & Washer	M6x12; 6mm	4
3.....	AL100-150-03	Hand Wheel Cover		1
4.....	GB8891-8.....	Lock Nut	M8	1
5.....	L100-100-10-1	Washer		1
6.....	L100-50-12	Hand Chain – specify length	4.8x22 mm.....	1
7.....	L100-50-13	Hand Chain Connecting Link.....		1
8L.....	AL100-150-08	Hand Wheel with Overload Protection		1
9.....	AL100-150-09	Fused Brake Disc		1
11.....	AL100-150-11	Brake Hub.....		1
12.....	GB8941-07.....	Retainer Ring	7 mm	2
13.....	AL100-150-13	Pawl.....		2
14.....	AL100-150-14	Pawl Spring.....		2
15.....	AL100-150-15	Stay Bolt		4
16.....	AL100-150-16	Side Plate A Assembly		1
17.....	AL100-150-17	Load Chain Guide A		1
18.....	AL100-150-18	Load Sheave		1
19.....	JLH160-49.....	Load Chain.....	7.1x19.9 mm.....	1
20.....	AL100-150-20	Anchor Hanger		1
21.....	AL100-150-21	Anchor Pin (21a) / Nut (21b)	M8	1
22.....	AL100-150-22	Load Chain Guide B		1
23.....	AL100-150-23	Stay Bolt Sleeve		4
24.....	AL100-150-24	Side Plate B.....		1
25.....	AL100-150-25	Top Hook Shaft.....		1
26.....	AL100-150-26	Driving Shaft		1
27.....	AL100-150-27	Load Gear		1
28.....	AL100-150-28	Disc Gears.....		2
29.....	AL100-150-29	Gear Plate.....		1
30.....	AL100-150-30	Gear Case		1
31.....	AL100-150-31	Name Plate.....		1
32.....	GB827-2-4	Rivet	2x4 mm.....	4
33.....	AL100-150-33	Top Hook Assembly.....		1
34.....	JLH160-37-1.....	Safety Latch Assembly.....		2
35.....	AL100-150-35	Bottom Hook Assembly.....		1
36.....	AL100-150-36	Load Pin & Nut	M6	1
55.....	AL100-150-55	Gasket		1
56.....	AL100-150-56	Shim.....		1

Note: When ordering replacement chain (Index #6, #19), specify length.

13.1.5 Parts List: AL100-200 Aluminium Chain Hoist (2 Ton)

Parts listed under each assembly are parts that make up that assembly (sold as an assembly only).

Index No.	Part No.	Description	Size	Qty
1.....	AL100-200-01	Warning Tag		1
2.....	AL100-100-02	Screw & Washer		4
3.....	AL100-200-03	Hand Wheel Cover		1
4.....	GB8891-8.....	Lock Nut	M8	1
5.....	L100-100-10-1	Washer		1
6.....	L100-50-12	Hand Chain	4.8x22 mm.....	1
7.....	L100-50-13	Master Link.....		1
8L.....	AL100-200-08L	Hand Wheel with Overload Protection		1
9.....	AL100-200-09	Fused Brake Disc		1
11.....	AL100-200-11	Brake Hub.....		1
12.....	GB8941-10.....	Retainer Ring	10 mm	2
13.....	L100-100-16	Pawl.....		2
14.....	L100-100-17	Pawl Spring.....		2
15.....	AL100-200-15	Stay Bolt		4
16.....	AL100-200-16	Side Plate A Assembly		1
17.....	AL100-200-17	Load Chain Guide A		1
18.....	AL100-200-18	Load Sheave		1
19.....	AL100-200-19	Load Chain.....	8x24 mm.....	1
20.....	AL100-200-20	Anchor Hanger		1
21.....	AL100-150-21	Anchor Pin (21a) / Nut (21b)	M8	1
22.....	L100-200-37	Load Chain Guide B		1
23.....	AL100-200-23	Stay Bolt Sleeve		4
24.....	AL100-200-24	Side Plate B.....		1
25.....	AL100-200-25	Top Hook Shaft.....		1
26.....	AL100-200-26	Driving Shaft.....		1
27.....	AL100-200-27	Load Gear		1
28.....	AL100-200-28	Disc Gears.....		2
29.....	AL100-200-29	Gear Plate.....		1
30.....	AL100-200-30	Gear Case		1
31.....	AL100-200-31	Name Plate.....		1
32.....	GB827-3-6	Rivet	3x6 mm.....	4
33.....	AL100-200-33	Top Hook Assembly.....		1
34.....	JLH250-37-1.....	Safety Latch Assembly.....		2
35.....	AL100-200-35	Bottom Hook Assembly.....		1
36.....	AL100-200-36	Load Pin & Nut	M6	1
55.....	AL100-200-55	Gasket		1
56.....	AL100-200-56	Shim.....		1

Note: When ordering replacement chain (Index #6, #19), specify length.

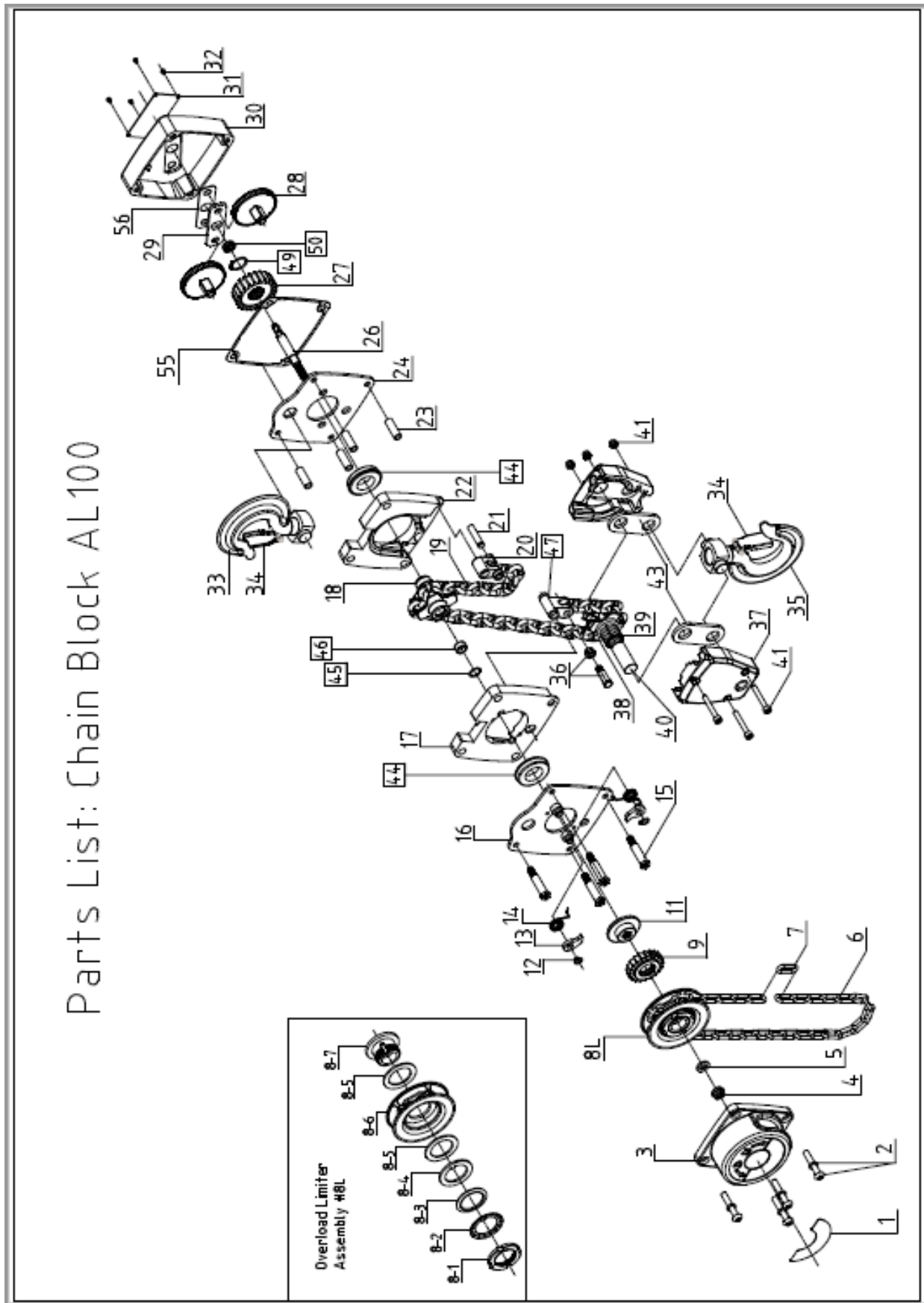
13.1.6 Parts List: AL100-300 Aluminium Chain Hoist (3 Ton)

Parts listed under each assembly are parts that make up that assembly (sold as an assembly only).

Index No.	Part No.	Description	Size	Qty
1.....	AL100-300-01	Warning Tag		1
2.....	AL100-100-02	Screw & Washer	M6x12; 6 mm	4
3.....	AL100-300-03	Hand Wheel Cover		1
4.....	GB8891-8.....	Lock Nut	M8	1
5.....	L100-100-10-1	Washer		1
6.....	L100-50-12	Hand Chain	4.8x22 mm.....	1
7.....	L100-50-13	Master Link.....		1
8L.....	AL100-300-08L	Hand Wheel with Overload Protection		1
9.....	AL100-300-09	Fused Brake Disc		1
11.....	AL100-300-11	Brake Hub.....		1
12.....	GB8941-07.....	Retainer Ring	7 mm	2
13.....	AL100-300-13	Pawl.....		2
14.....	AL100-300-14	Pawl Spring.....		2
15.....	AL100-150-15	Stay Bolt		4
16.....	AL100-150-16	Side Plate A Assembly		1
17.....	AL100-150-17	Load Chain Guide A		1
18.....	AL100-150-18	Load Sheave		1
19.....	JLH160-49.....	Load Chain.....	7.1x19.9 mm.....	1
20.....	AL100-150-20	Anchor Hanger		1
21.....	AL100-150-21	Anchor Pin (21a) / Nut (21b)		1
22.....	AL100-150-22	Load Chain Guide B		1
23.....	AL100-150-23	Stay Bolt Sleeve		4
24.....	AL100-150-24	Side Plate B.....		1
25.....	AL100-300-25	Top Hook Shaft.....		1
26.....	AL100-150-26	Driving Shaft		1
27.....	AL100-150-27	Load Gear		1
28.....	AL100-150-28	Disc Gears.....		2
29.....	AL100-150-29	Gear Plate.....		1
30.....	AL100-150-30	Gear Case		1
31.....	AL100-300-31	Name Plate.....		1
32.....	GB827-2-4	Rivet	2x4 mm.....	4
33.....	AL100-300-33	Top Hook Assembly.....		1
34.....	AL100-300-34	Safety Latch Assembly.....		2
35.....	AL100-300-35	Bottom Hook Assembly.....		1
36.....	AL100-300-36	Load Pin & Nut	M6	1
37.....	AL100-300-37	Bottom Hook Holder		2
38.....	AL100-300-38	Idle Sheave		1
39.....	AL100-300-39	Quill Roller.....	3x26 mm.....	22
40.....	AL100-300-40	Idle Shaft		1
41.....	AL100-300-41	Screw & Nut	M8x25; M8	2
42.....	AL100-300-42	Screw & Nut	M6x20; M6; 6 mm	1
55.....	AL100-150-55	Gasket		1
56.....	AL100-150-56	Shim.....		1

Note: When ordering replacement chain (Index #6, #19), specify length.

13.1.7 AL100 Aluminum Chain Hoist Parts Breakdown (5 ton)



13.1.8 Parts List: AL100-500 Aluminium Chain Hoist (5 Ton)

Parts listed under each assembly are parts that make up that assembly (sold as an assembly only).

Index No.	Part No.	Description	Size	Qty
1	AL100-500-01	Warning Tag		1
2	AL100-500-02	Screw & Washer	M6x16; 6 mm	4
3	AL100-500-03	Hand Wheel Cover		1
4	GB8891-8	Lock Nut	M8	1
5	GB971-8	Washer	8 mm	1
6	L100-50-12	Hand Chain – specify length	4.8X22 mm	1
7	L100-50-13	Hand Chain Connecting Link		1
8L	AL100-500-08L	Hand Wheel with Overload Protection		1
9	AL100-500-09	Fused Brake Disc		1
11	AL100-500-11	Brake Hub		1
12	GB8941-10	Retainer Ring	10 mm	2
13	AL100-500-13	Pawl		2
14	AL100-500-14	Pawl Spring		2
15	AL100-500-15	Stay Bolt		4
16	AL100-500-16	Side Plate A Assembly		1
17	AL100-500-17	Load Chain Guide A		1
18	AL100-500-18	Load Sheave		1
19	L100-500-37	Load Chain	9x27 mm	1
20	AL100-500-20	Anchor Hanger		1
21	AL100-500-21	Anchor Pin		1
22	AL100-500-22	Load Chain Guide B		1
23	AL100-500-23	Stay Bolt Sleeve		4
24	AL100-500-24	Side Plate B		1
26	AL100-500-26	Driving Shaft		1
27	AL100-500-27	Load Gear		1
28	AL100-500-28	Disc Gears		2
29	AL100-500-29	Gear Plate		1
30	AL100-500-30	Gear Case		1
31	AL100-500-31	Name Plate		1
32	GB827-3-6	Rivet	3x6 mm	4
33	AL100-500-33	Top Hook Assembly		1
34	AL100-500-34	Safety Latch Assembly		2
35	AL100-500-35	Bottom Hook Assembly		1
36	AL100-500-36	Load Pin & Nut	M10	1
37	AL100-500-37	Bottom Hook Holder		2
38	AL100-500-38	Idle Sheave		1
39	AL100-500-39	Quill Roller	3x10 mm	29
40	AL100-500-40	Idle Shaft		1
41	AL100-500-41	Screw & Nut	M8x55; 8 mm	3
43	AL100-500-43	Reinforced Plate		1
44	BB-6007N-2RS	Seal Type Caged Ball Bearings		2
45	AL100-500-45	C-Clip		1
46	HK1715	Needle Bearing	∅24 mm	1
47	AL100-500-47	Dead End Block		1
49	GB8941-32	Snap Ring	32 mm	1
50	BB-61900N-RS	Seal Type Caged Ball Bearings		1
55	AL100-500-55	Gasket		1
56	AL100-500-56	Shim		1

Note: When ordering replacement chain (Index #6, #19), specify length.

14.0 Warranty and Service

JET warrants every product it sells against manufacturers' defects. If one of our tools needs service or repair, please contact Technical Service by calling 1-800-274-6846, 8AM to 5PM CST, Monday through Friday.

Warranty Period

The general warranty lasts for the time period specified in the literature included with your product or on the official JET branded website.

- JET products carry a limited warranty which varies in duration based upon the product. (See chart below)
- Accessories carry a limited warranty of one year from the date of receipt.
- Consumable items are defined as expendable parts or accessories expected to become inoperable within a reasonable amount of use and are covered by a 90 day limited warranty against manufacturer's defects.

Who is Covered

This warranty covers only the initial purchaser of the product from the date of delivery.

What is Covered

This warranty covers any defects in workmanship or materials subject to the limitations stated below. This warranty does not cover failures due directly or indirectly to misuse, abuse, negligence or accidents, normal wear-and-tear, improper repair, alterations or lack of maintenance. JET woodworking machinery is designed to be used with Wood. Use of these machines in the processing of metal, plastics, or other materials outside recommended guidelines may void the warranty. The exceptions are acrylics and other natural items that are made specifically for wood turning.

Warranty Limitations

Woodworking products with a Five Year Warranty that are used for commercial or industrial purposes default to a Two Year Warranty. Please contact Technical Service at 1-800-274-6846 for further clarification.

How to Get Technical Support

Please contact Technical Service by calling 1-800-274-6846. **Please note that you will be asked to provide proof of initial purchase when calling.** If a product requires further inspection, the Technical Service representative will explain and assist with any additional action needed. JET has Authorized Service Centers located throughout the United States. For the name of an Authorized Service Center in your area call 1-800-274-6846 or use the Service Center Locator on the JET website.

More Information

JET is constantly adding new products. For complete, up-to-date product information, check with your local distributor or visit the JET website.

How State Law Applies

This warranty gives you specific legal rights, subject to applicable state law.

Limitations on This Warranty

JET LIMITS ALL IMPLIED WARRANTIES TO THE PERIOD OF THE LIMITED WARRANTY FOR EACH PRODUCT. EXCEPT AS STATED HEREIN, ANY IMPLIED WARRANTIES OF MERCHANTABILITY AND FITNESS FOR A PARTICULAR PURPOSE ARE EXCLUDED. SOME STATES DO NOT ALLOW LIMITATIONS ON HOW LONG AN IMPLIED WARRANTY LASTS, SO THE ABOVE LIMITATION MAY NOT APPLY TO YOU.

JET SHALL IN NO EVENT BE LIABLE FOR DEATH, INJURIES TO PERSONS OR PROPERTY, OR FOR INCIDENTAL, CONTINGENT, SPECIAL, OR CONSEQUENTIAL DAMAGES ARISING FROM THE USE OF OUR PRODUCTS. SOME STATES DO NOT ALLOW THE EXCLUSION OR LIMITATION OF INCIDENTAL OR CONSEQUENTIAL DAMAGES, SO THE ABOVE LIMITATION OR EXCLUSION MAY NOT APPLY TO YOU.

JET sells through distributors only. The specifications listed in JET printed materials and on official JET website are given as general information and are not binding. JET reserves the right to effect at any time, without prior notice, those alterations to parts, fittings, and accessory equipment which they may deem necessary for any reason whatsoever. JET® branded products are not sold in Canada by JPW Industries, Inc.

Product Listing with Warranty Period

90 Days – Parts; Consumable items
1 Year – Motors; Machine Accessories
2 Year – Metalworking Machinery; Electric Hoists, Electric Hoist Accessories; Woodworking Machinery used for industrial or commercial purposes
5 Year – Woodworking Machinery
Limited Lifetime – JET Parallel clamps; VOLT Series Electric Hoists; Manual Hoists; Manual Hoist Accessories; Shop Tools; Warehouse & Dock products; Hand Tools; Air Tools

NOTE: JET is a division of JPW Industries, Inc. References in this document to JET also apply to JPW Industries, Inc., or any of its successors in interest to the JET brand.

This page intentionally left blank.

This page intentionally left blank.



427 New Sanford Road
LaVergne, Tennessee 37086
Phone: 800-274-6848
www.jettools.com