



# ARCTIC WIND®

**USER MANUAL**

## **PORTABLE WASHER**

0.9 CU. FT.

**FOR MODELS:**

### **APW9**



**1 year**  
FULL WARRANTY



**energy efficient**  
APPLIANCE



C US

Before using your portable washer, please read this manual and keep it for future reference, along with your receipt.

Specifications and performance data are subject to change without notice.

# Contents

<b>Contents</b>	
Safety And Precautions .....	2
Basic Precautions .....	3
Installation Warnings And Precautions .....	4
Usage And Maintenance Warnings And Precautions .....	5
Installation Instructions.....	9
Unpacking and Removing Shipping Material.....	9
Key Parts and Components.....	10
Accessories.....	10
Tools Needed in Installation .....	10
Key Dimensions and Specifications .....	11
Choose the Proper Location.....	11
Install Your Washer.....	12
How To Use .....	17
Control Panel .....	17
Washing a Load of Laundry .....	18
Cycle Guide .....	20
Care And Cleaning .....	22
Regular Cleaning and Maintenance.....	22
Troubleshooting .....	27
Before Calling for Service .....	27
Error Codes .....	27
Appendix .....	28
Warranty.....	29
Service.....	30









# Safety and Precautions

This manual contains important information on the installation, use, and care of your appliance. Please read this manual carefully before installation and operation of this machine to prevent injury and property damage.


## WHAT YOU NEED TO KNOW ABOUT SAFETY INSTRUCTIONS

Warnings and Important Safety Instructions in this manual DO NOT cover all possible conditions and situations that may occur. It is your responsibility to use common sense, caution and care when installing, maintaining and operating your washer.

## IMPORTANT SAFETY SYMBOLS AND PRECAUTIONS

	<b>WARNING</b> This indicates that hazards or unsafe practices may cause <b>serious personal injury or death</b> . To reduce the risk of fire, explosion, electric shock, or personal injury when using your washer, these basic safety precautions <b>SHOULD</b> be followed.
	<b>CAUTION</b> This indicates that hazards or unsafe practices may cause <b>minor personal injury or property damage</b> .
	This graphic represents <b>ATTENTION</b> , and detailed cautions will be displayed inside the graphic. 
	This graphic represents <b>OPERATION PROHIBITED</b> , and detailed prohibitive items will be displayed in side the graphic 
	This graphic represents <b>FORBIDDEN EXECUTION</b> , and detailed forbidden execution items will be displayed inside the graphic 

## State of California Proposition 65 Warnings

 **WARNING** The California Safe Drinking Water and Toxic Enforcement Act requires the Governor of California to publish a list of substances known to the State of California to cause cancer, birth defects, or other reproductive harm, and requires business to warn of potential exposure to such substances. This product contains a chemical known to the State of California to cause cancer, birth defects, or other reproductive harm. This appliance can cause low-level exposure to some of the substances listed, including benzene, formaldehyde, and carbon monoxide.

# Safety and Precautions

## Basic Precautions



### WARNING

1. Read all instructions before using the appliance.
2. Use this appliance only for its intended purpose as described in this owner's Manual.
3. Before use, the washer must be properly installed as described in this manual.
4. ALWAYS follow the fabric care instructions supplied by the garment manufacturer.
5. Do not wash or dry articles that have been previously cleaned in, washed in, soaked in, or spotted with gasoline, dry-cleaning solvents, other flammable or explosive substances as they give off vapors that could ignite or explode.
6. Do not allow children to play on or in the appliance. Close supervision of children is necessary when the appliance is used near children.
7. Before the appliance is removed from service or discarded, remove the lid of the washing or drying compartment.
8. Do not reach into the appliance if the basket is moving.
9. Do not install or store this appliance where it will be exposed to the weather or freezing temperatures.
10. Do not tamper with the controls.
11. Do not repair or replace any part of the appliance or attempt any servicing unless it is specifically recommended in the user-maintenance instructions, or in published user-repair instructions that you understand and have the skills to carry out.
12. Do not add gasoline, dry-cleaning solvents, or other flammable or explosive substances to the wash water. These substances give off vapors that could ignite or explode.
13. Under certain conditions, hydrogen gas may be produced in a hot water system that has not been used for 2 weeks or more.
14. HYDROGEN GAS IS EXPLOSIVE. If the hot water system has not been used for 2 weeks or more, before using a washer or combination washer-dryer, turn on all hot water faucets and let the water flow from each for several minutes. This will release any accumulated hydrogen gas. As the gas is flammable, do not smoke or use an open flame during this time.
15. Keep the area underneath and around your appliances free of combustible materials (lint, paper, rags, etc.), gasoline, chemicals and other flammable vapors and liquids.
16. Do not place items exposed to cooking oil in your washer. Items contaminated with cooking oils may contribute to a chemical reaction that could cause a load to catch fire.
17. This washer is not designed for maritime use or for mobile installations such as in RVs, aircraft, etc.
18. Turn off the water faucets and unplug the washer if the machine is to be left for an extended period of time, such as during vacations.
19. Packaging material can be dangerous for children. There is a risk of suffocation! Keep all package away from children.
20. Always check the inside of the washer for foreign objects before loading laundry. Keep the lid closed when not in use.

# Safety and Precautions

## Installation Warnings and Precautions



### WARNING



### Power Cord and Socket



### Earthing



### Location

1. Plug the power cord into an AC 120V/60Hz wall socket rated at 15amps or higher. Use the socket for this washer only.
2. Do not use an extension cord.
  - Sharing a wall socket with other appliance, using a power strip, or extending the power cord may result in electric shock or fire.
  - Do not use an electric transformer. It may result in electric shock or fire.
  - Ensure that the power voltage, frequency, and current match the product's specifications. Failure to do so may result in electric shock or fire.
3. Have this appliance installed by a qualified technician or service company.
  - Failure to do so may result in electric shock, fire, explosion, problems with the product, or injury.
4. Remove all foreign substances such as dust or water from the power plug terminals and contact points using a dry cloth on a regular basis.
  - Unplug the power plug and clean it with a dry cloth.
  - Failure to do so may result in electric shock or fire.
5. Plug the power plug into the wall socket in the right direction so that the cord runs towards the floor.
  - If you plug the power plug into the socket in the opposite direction, the electric wires within the cable may be damaged and this may result in electric shock or fire.
6. Plug the power plug into the wall socket firmly. Do not use a damaged power plug, or loosen wall socket.
  - This may result in electric shock or fire.
7. Do not pull or excessively bend the power cord.
8. Do not twist or tie the power cord.
9. Do not hook the power cord over a metal object, place a heavy object on the power cord, insert the power cord between objects, or push the power cord into the space behind the appliance.
  - This may result in electric shock or fire.
10. Do not pull the power cord when unplugging the power plug.
  - Unplug the power plug by holding the plug.
  - Failure to do so may result in electric shock or fire.
11. If the power plug or power cord are damaged, contact your nearest service center.
  1. This appliance must be properly grounded.
  2. Do not ground the appliance to a gas pipe, plastic water pipe, or telephone line.
    - Improper grounding may result in electric shock, fire, explosion, or problems with the product.
    - Never plug the power cord into a socket that is not grounded correctly. Make sure the socket you use is grounded in accordance with local and national codes.
1. Do not install this appliance near a heater or inflammable material.
2. Do not install this appliance in a humid, oily, or dusty location, or in a location exposed to direct sunlight or water (rain drops).
3. Do not install this appliance in a location where gas may leak.
  - This may result in electric shock or fire.
4. If the washer is moved to a new location, have it checked and re-installed by a qualified service technician.
  - Failure to follow this warning may result in electric shock or fire.

# Safety and Precautions

## Installation Warnings and Precautions



1. Do not install on carpet. Install washer on a level and solid floor that can support its weight.
  - Failure to do so may result in abnormal vibrations, noise, or problems with the product.
2. The washer is heavy. Two or more people may be needed to install and move the appliance.
  - Failure to do so may result in bodily or other injuries.
3. Store and install the washer where it will not be exposed to temperatures below freezing or exposed to outdoor weather conditions.
  - Failure to do so may result in serious leak damage.
4. Position the appliance so that the power plug is easily accessible.
  - Failure to do so may result in electric shock or fire due to electric leakage.
5. To reduce the risk of injury to persons, adhere to all industry recommended safety glasses.
  - Failure to follow all of the safety warnings in this manual may result in property damage, or injury to persons.

## Usage and Maintenance Warnings and Precautions



1. If the appliance is flooded, cut the power immediately and contact your nearest service center.
2. If the appliance emits a strange noise, a burning smell, or smoke, unplug the power plug immediately and contact your nearest service center.
  - Failure to do so may result in electric shock or fire.
3. In the event of a gas leak (such as propane gas, LP gas, etc.), ventilate the area immediately. Do not turn any appliance or light on or off.
  - Do not use a ventilating fan.
  - A spark may result in an explosion or fire.
4. Do not wash items contaminated with gasoline, kerosene, benzene, paint thinner, alcohol, dry cleaning detergent or other flammable or explosive substances.
  - This may result in electric shock, fire, or an explosion.
5. Do not force the washer lid open while the washer is operating (high-temperature washing / drying / spinning).
  - Water flowing out of the washer may cause burns or cause the floor to be slippery. This may result in injury.
  - Forcing the lid open can damage the product or cause injury.
6. Make sure to remove the packaging (sponge, styrofoam) attached to the bottom of the washer before using it.
7. Do not insert your hand or a metal object under the washer.
  - This may result in injury.
8. Do not attempt to operate this appliance if it is damaged, malfunctioning, partially disassembled, or has missing or broken parts, including a damaged cord or plug.
  - This may result in electric shock, fire or death.
9. Do not touch the power plug with wet hands.
  - This may result in electric shock.
10. Do not turn the appliance off by unplugging the power plug while the washer is in operation.
  - Plugging the power plug into the wall socket again may cause a spark and result in electric shock or fire.
11. Keep all packaging material well out of the reach of children, as packaging materials can be dangerous to children.
  - If a child places a bag over its head, it may suffocate.

# Safety and Precautions

## Usage and Maintenance Warnings and Precautions



12. Do not let children or infirm persons use this washer unsupervised.
  - Failure to do so may result in electric shock, burns or injury.
13. Do not attempt to repair, disassemble, or modify the appliance yourself.
  - Do not use any fuse (such as cooper, steel wire, etc.) other than the standard fuse.
  - If you need to repair or reinstall the appliance, contact your nearest service center.
  - Failure to do so may result in electric shock, fire, problems with the product, or injury.
14. If any foreign substance such as water enters the appliance in any area other than the tub, unplug the power plug and contact your nearest service center.
  - Failure to do so may result in electric shock or fire.
15. If the water supply hose comes loose from the faucet and floods the appliance, unplug the power plug.
  - Failure to do so may result in electric shock or fire.
16. Do not mix chlorine bleach with ammonia or acids such as vinegar.
  - Incorrect usage can produce poisonous gas, result in serious injury.
17. Do not reach into the washer while parts are moving. Before loading, unloading, or adding items, press the START/PAUSE button and allow the basket to come to complete stop before reaching inside.
  - Failure to do so may result in electric shock, injury or fire.
18. Do not allow children to play on or in the washer.
  - Failure to do so may result in serious injury to persons.
19. Keep laundry products out of children's reach. Observe all warnings on product labels and follow the instructions listed in this manual.
  - Failure to do so may result in serious injury to persons.
20. Disconnect this appliance from the power supply before attempting any user maintenance. Turning the controls to the OFF position does not disconnect this appliance from the power supply.
  - Failure to do so may result in electric shock, injury or fire.
21. Do not clean the appliance by spraying water directly onto it.
22. Do not use benzene, thinner, or alcohol to clean the appliance.
  - This may result in discoloration, deformation, damage, electric shock or fire.

## Usage and Maintenance Warnings and Precautions



1. Unplug the power plug when the appliance is not being used for long periods of time or during a thunder/lightning storm.
  - Failure to do so may result in electric shock or fire.
2. Keep hands and foreign objects clear of the lid and latch area when closing the lid.
  - Failure to do so may result in personal injury.
3. If the washer is contaminated by a foreign substance such as detergent, dirt, food waste, etc., unplug the power plug and clean the washer with a damp, soft cloth.
  - Failure to do so may result in discoloration, deformation, damage or rust. The clear portion of the lid can be broken by a strong impact. Take care
4. when using the washer.
  - If the clear portion is cracked or broken, it may result in injury.
5. After a water supply failure or when reconnecting the water supply hose, open the faucet slowly.

# Safety and Precautions

## Usage and Maintenance Warnings and Precautions



### CAUTION

6. Open the faucet slowly after a long period of non-use.
  - The air pressure in the water supply hose or the water pipe may result in damage to a part or in water leakage.
7. If a drain error occurs during an operation, check if there is a draining problem.
  - If the washer is used when it is flooded because of a draining problem, it may result in electric shock or fire due to electric leakage.
8. Do not insert your hand or a metal object under the washer.
  - This may result in injury.
9. Insert the laundry into the washer completely so that laundry does not get caught in the lid.
  - If laundry gets caught in the lid, it may result in damage to the laundry or the washer, or result in water leakage.
10. Ensure that the faucet is turned off when the washer is not being used.
  - Ensure that the water supply hose connectors are properly tightened.
  - Failure to do so may result in property damage or injury.
11. Open the faucet and check if the water supply hose connector is firmly tightened and that there is no water leaking before using the product.
  - If the water supply hose connectors are loose, it may result in water leakage.
12. Do not stand on top of the appliance or place objects (such as laundry, lighted candles, lighted cigarettes, dishes, chemicals, metal objects, etc.) on the appliance.
  - This may result in electric shock, fire, problems with the product, or injury.
13. Do not operate the appliance with wet hands.
  - This may result in electric shock.
14. Do not spray volatile material such as insecticide onto the surface of the appliance.
  - As well as being harmful to humans, it may also result in electric shock, fire, or problems with the product.
15. Do not place an object that generates an electromagnetic field near the washer.
  - This may result in injury due to a malfunction.
16. Since the water drained during a high temperature wash or drying cycle is hot, do not touch the water.
  - This may result in burns or injury.
17. Do not wash, spin, or dry water-proof seats, mats, or clothing.
  - Do not wash thick, hard mats even if the washer mark is on the care label.
  - This may result in injury or damage to the washer, walls, floor, or clothing due to abnormal vibrations.
18. Do not operate the washer when detergent dispenser is removed.
  - This may result in electric shock or injury due to water leakage.
19. Do not insert your hand into the detergent dispenser after opening it.
  - This may result in injury as your hand may be caught.
20. Do not place any non-laundry objects, such as shoes, food waste, or animals into the washer.
  - This can cause abnormal vibrations that can damage the washer, and, in the case of pets, cause severe injury or death.
21. Do not press the buttons using sharp objects such as pins, knives, fingernails, etc.
  - This may result in electric shock or injury.

# Safety and Precautions

## Usage and Maintenance Warnings and Precautions



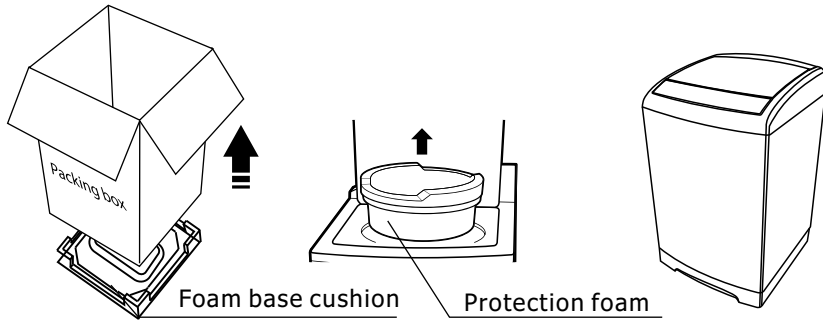
### CAUTION

22. Do not wash laundry contaminated by oils, creams, or lotions usually found in skincare shops or massage clinics.
  - This may result in the rubber seal becoming deformed and water leakage.
23. Ensure that the water inlet pipe is connected and the tap is opened before washing clothes.
24. Do not leave metal objects (safety pins, hair pins, etc.) or bleach in the tub for long periods of time.
  - This may cause the tub to rust.
  - If rust appears on the surface of the tub, apply a neutral cleansing agent to the surface and use a sponge to clean it. Never use a metal brush.
25. Do not use hot water from water cooling/heating devices.
  - This may result in problems with the washer.
26. Do not use natural hand-washing soap in the washer.
  - If it hardens and accumulates inside the washer, it may cause problems with the product, discoloration, rust, or bad odors.
27. Do not wash large laundry items such as bedding in the washing net.
  - Failure to do so may result in injury due to abnormal vibrations.
  - Place smaller items, such as lace socks and lingerie in the washing net.
28. Do not use hardened detergent.
  - If it accumulates inside the washer, it may result in water leakage.
29. Do not wash throw rugs or doormats.
  - If you wash throw rugs or doormats, the sand will accumulate inside the washer. It may result in error such as no draining.

# Installation Instructions

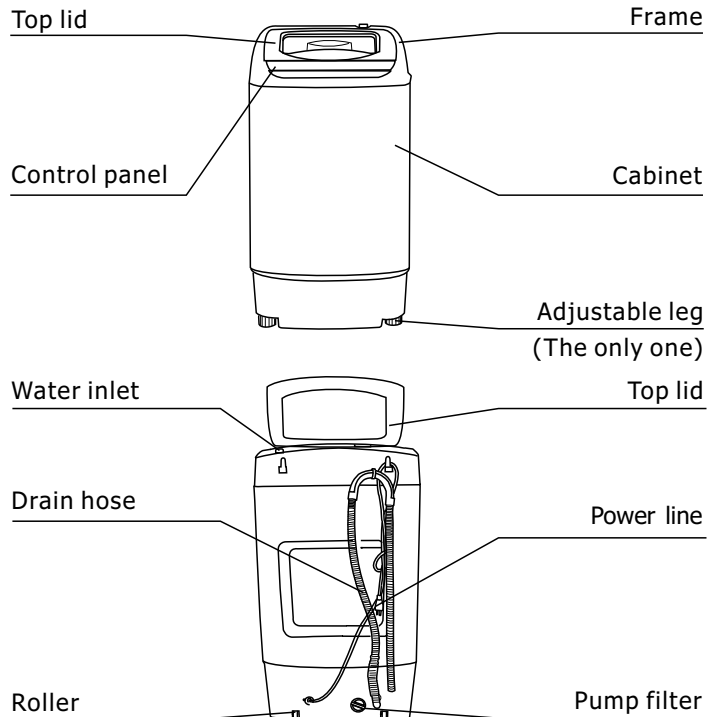
## Unpacking and Removing Shipping Material

Remove the packing box and lift the washer up and away from the foam base cushion. Open the lid of washer to take out all accessories including protection foam.



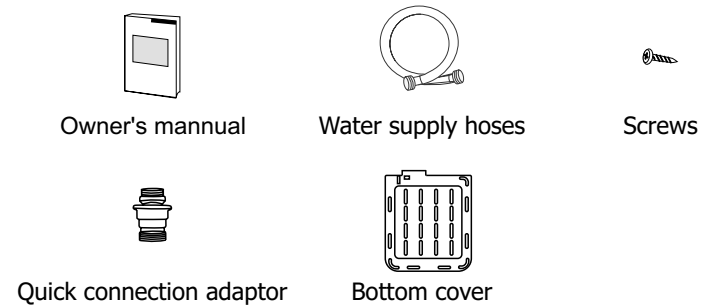
Packaging materials can be dangerous to children; Keep all packaging material (plastic bags, polystyrene, etc.) well out of children's reach. Do not operate this appliance on the foam base cushion. Failure to do so will result in serious vibration.

## Key Parts and Components

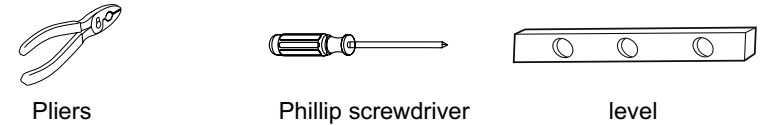


# Installation Instructions

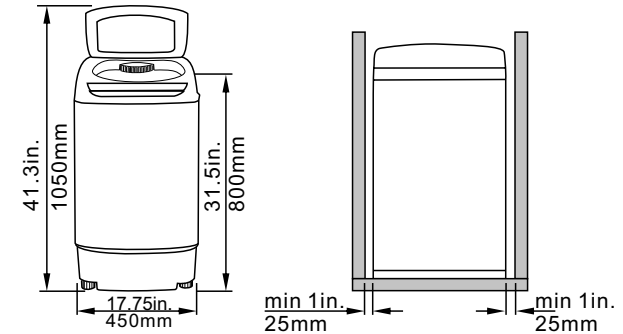
## Accessories



## Tools Needed in Installation



## Key Dimensions and Specifications



## Choose the Proper Location

### ● Flooring

For best performance, you must install your washer on a solidly constructed floor. Wood floors may need to be reinforced to minimize vibration and/or unbalanced load situations.

- Carpeting and soft tile surfaces are contributing factors to vibration which can cause your washer to move slightly during the spin cycle.



Do not install your washer in areas where water may freeze, since your washer will always retain some water in its water valve, pump, and hose areas. Frozen water can damage the belts, the pump, hoses, and other components. Never install on a platform or weakly supported structure.

# Installation Instructions

## Choose the Proper Location

### • Electric

Use 120Volt 60Hz 15 Amps fuse or circuit breaker.  
Individual branch circuit serving only for your washer is recommended.



Never use an extension cord.

### • Grounding

#### **Electrical grounding is required for this washer.**

This appliance must be grounded. In the event of malfunction or breakdown, grounding will reduce the risk of electric shock by providing a path of least resistance for electric current.

This appliance is equipped with a power cord having a three-prong grounding plug for use in a properly installed and grounded outlet.

The plug must be plugged into an appropriate outlet that is properly installed and grounded in accordance with all local codes and ordinances.



An improperly connected equipment-grounding conductor can increase the risk of electrical shock. Check with a qualified electrician or serviceman if you are not sure whether the appliance is properly grounded. Do not modify the plug provided with the appliance. If it does not fit the outlet, have a proper outlet installed by a qualified electrician. To prevent unnecessary risk of fire, electrical shock or personal injury, all wiring and grounding must be done in accordance with the National Electrical Code ANSI/FNPA, No.70 Latest Revision and local codes and ordinances. It is the personal responsibility of the appliance owner to provide adequate electrical service for this appliance.



Never connect the ground wire to plastic plumbing lines, gas lines, or hot water pipes.

### • Water

- To correctly fill your washer in the proper amount of time, water pressure of 14 to 70psi (100 to 500 kPa) is required.
- Water pressure less than 14psi may cause water valve failure, or may not allow the water valve to shut off completely, or may extend the fill time beyond what your washer controls allow. This may cause your washer to turn off and display an error.
- The water faucet must be within 4 feet / 122cm of the back of your washer to match the inlet hoses provided with your washer.

#### **To avoid the possibility of water damage:**

- Have water faucets easily accessible
- Turn off faucets when the washer is not in use.
- Periodically check that there is no leakage from the water inlet hose fittings.

# Installation Instructions

## Choose the Proper Location

### • Drain facility

The recommended height of the standpipe is 35in. or 90cm.

The drain hose must be routed through the drain hose clip to the standpipe.

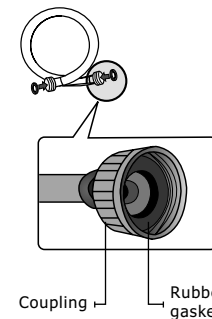
The standpipe must be large enough to accept the outside diameter of the drain hose.

## Install Your Washer



Before installing, make sure there are rubber gaskets inside the fittings at both ends of the water supply hoses.

If there are no water inlet hoses packed with the washer or if the hoses are damaged, contact customer service for assistance. Installing the water supply hoses without rubber gaskets can cause water leakage. When you initially install the washer, be sure to use new hoses. Failure to do so may result in a water leakage or overflow and may damage your property. If a hose is too short, replace the hose with a longer, high pressure hose.

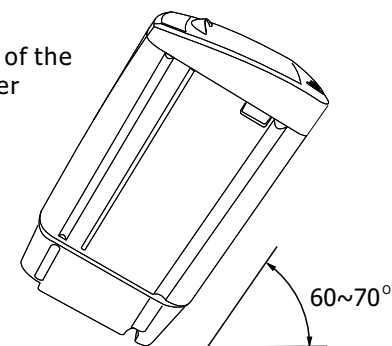


### • Step 1: Move your washer to selected position

Tilt the unit back onto its rear rollers and push it forward as shown in the figure below. Move the unit to a location as described in the "Choose the Proper Location" section above.

Front of the washer

Back of the washer



Make sure the location has a hard, level surface without carpeting. There should be no direct sunlight.

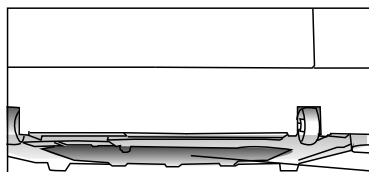
Do not expose the unit to freezing temperatures (under 32° F or 0° C).

# Installation Instructions

## Install Your Washer

### ● Step 2: Install the Bottom Cover

Slide the bottom cover into the slots on bottom surface of the unit as in the following figure, and fix it with two screws attached with the unit.



Bottom Cover

### ● Step 3: Connect the water hose

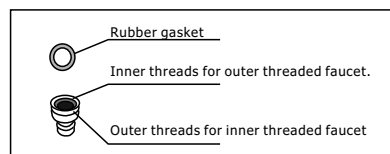
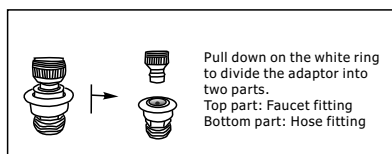
1. The Quick Connection Adaptor is primarily for quick connection to a single faucet, such as a typical kitchen sink, in cases where the washer is stored in a different place than where it is used. Skip this step if you are connecting the washer to a sink with separate hot and cold faucets.

The adaptor consists of two parts that quickly connect or disconnect. One part, the faucet fitting, is for connection to the faucet and the other part, the hose fitting, connects to the cold water hose of the washer.

- Pull back on the white ring to free the faucet fitting from the adaptor for installation into the faucet.
- Screw the end of the cold water hose onto the base of the hose fitting.
- If the faucet has internal screw threads, unscrew the aerator if present from the tip of the faucet. Then screw the faucet fitting into the faucet. Make sure that the black rubber gasket is on the top of the adaptor before screwing it in.
- If the faucet has external screw threads, remove the gasket from the top of the faucet fitting, and screw the fitting over the external threads.
- Pull back on the white ring to connect the two parts of the adaptor back together.

#### NOTE:

When connected to a single faucet, be sure to only run cold water washers.



2. Connect the ends of the water supply hoses to the COLD faucets. For convenience, use the Quick Connection Adaptor for connection to the cold water faucet. See instructions for Quick Connection Adaptor use in Step 1 above.



# Installation Instructions

## Install Your Washer

3. Tighten the fittings by hand until they are snug, and then tighten them an additional two-thirds of a turn with a wrench.

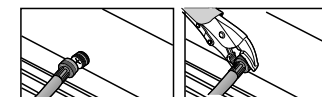


When you fasten the fittings, do not fasten them too tightly or apply tape or sealant to the faucets or water supply intakes. This can damage the fittings. After you have connected the water supply hoses to the faucets, ensure that they are connected securely by pulling the water supply hoses downwards.

4. Place the unconnected ends of the hoses into a bucket and open the faucets connected to the two water supply hoses for 10 or 15 seconds to remove any foreign substances from the hoses. Close the faucets before continuing.



5. Connect the ends of the water supply hoses to the water supply intake connections at the top of the washer.

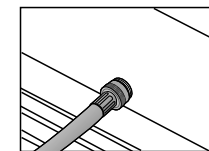


The water hose connected to the COLD faucet must be connected to the cold water supply intake.

6. Tighten the fittings by hand until they are snug, and then tighten them an additional two-thirds of a turn with a wrench.



Confirm that the water supply hoses are not twisted or bent. If the hoses are twisted or bent, the hoses can leak and cause electric shock due to the water leakage. To ensure the correct water usage, connect the COLD water faucets.



7. Turn on the COLD water supplies and check all the water supply intake connections and the faucets for water leaks.



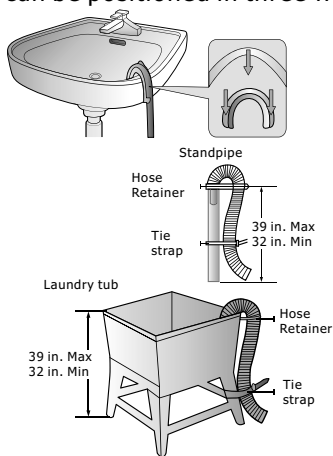
# Installation Instructions

## Install Your Washer

### ● Step 4: Connect the drain hose

Position the other end of the drain hose. It can be positioned in three ways.

- Over the edge of a wash basin. Secure the guide to the side of the basin wall with a hook or to the tap with a piece of string to prevent the drain hose from moving.
- In a standpipe. The standpipe must be no shorter than 32 in. (81cm) and no longer than 39 in. (100cm).
- In a laundry tub. The laundry tub must be no shorter than 32 in. (81cm) and no higher than 39 in. (100cm).

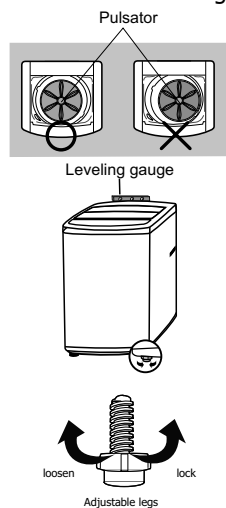


Make sure that the connection between the drain hose and the wash basin, standpipe or laundry tub is not airtight.

### ● Step 5: Leveling your washer

See if the washer is level by checking the position of the tub or using a leveling gauge.

- Slide the washer into position.
- Open the lid of the washer, and pour the water into the tub to just below the pulsator level.
- If the washer is level, the pulsator is positioned at the center of the washer as shown in the figure above right. If not, level your washer by turning the front leveling feet clockwise or counterclockwise as necessary.



There is **ONLY ONE** adjustable leg as right figure on this washer.

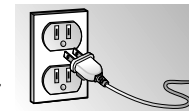
# Installation Instructions

## Install Your Washer

### ● Step 6: Powering your washer

Plug the power cord into a 3-prong, well grounded 120Volt 60Hz approved electrical outlet protected by a 15-amp fuse or comparable circuit breaker.

Your washer is grounded through the third prong of the power cord when plugged into a 3-prong grounded electrical outlet.



### ● Step 7: Running a test cycle

Run a test cycle as follows to check if your washer is properly installed.

- Load about 3.5 pounds of laundry into the tub.
- Press the **Power** button to turn on your washer.
- Select the Rinse+Spin cycle as instruction on page 19.
- Press the **Start/Pause** button to start the test cycle.
- The washer should not rock or vibrate excessively when water is supplied or when washing or spinning, and should drain well during the spin cycle.



If water leaks while water is being supplied or drained, check the water connections.

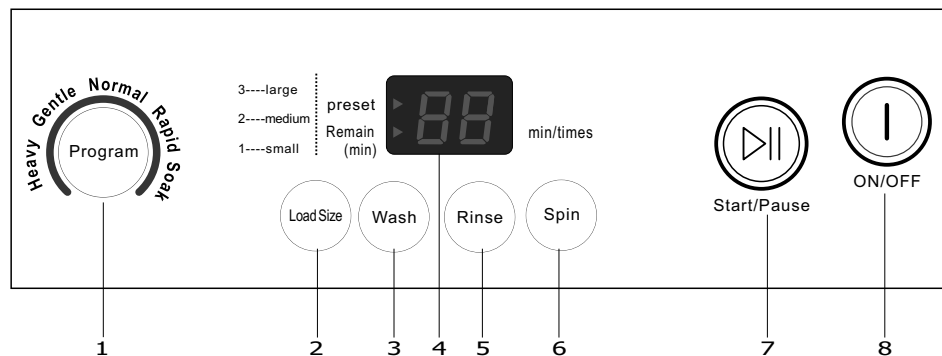
If the washer rocks and vibrates excessively, level your washer again.

### ● Step 8: Storing your washer

If you want to store your washer at another location, unplug it, drain any remaining water from the drain pipe and hook the pipe onto the back of the washer. Disconnect the water inlet hoses from the faucets and move washer to new location.

# How To Use

## Control Panel



### 1 - Program

Press this button to select your desired washing program.

- Heavy
- Gentle
- Normal
- Rapid
- Soak

### 2 - Load Size

Press this button to set your washing load size. Your setting will decide the water level throughout all steps in the cycle.

### 3 - Wash

Press the button to select the washing time

### 4 - Digital display

The digital display will show and count down the estimated minutes for the wash cycle selected.

### 5 - Rinse

Press the button to select the times of rinse

### 6 - Spin

Press the button to select the time of spin

### 7 - START/PAUSE

Press the **START/PAUSE** button once to the start the wash cycle.

Press the button during operation to pause the cycle. Press again to continue the cycle.

# How To Use

### 8 - ON/OFF

Press the **ON/OFF** button once to turn ON the power of the washer. Press again to turn OFF the unit.

## Washing a load of laundry

### • Step 1: Power on your washer



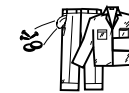
ON/OFF

Press the **ON/OFF** button to power your washer on.

### • Step 2: Load your washer



Before loading your laundry, be sure to take out coins, keys and other hard objects, and close all zippers to prevent the clothes from damage.



Sort laundry by fabric type, soil level, color and load size as needed. Refer to the Fabric Care Chart in the APPENDIX.

You can fill the tub with dry, unfolded clothes, but **DO NOT OVERLOAD** the tub. Load the tub no more than 3/4 full.



To ensure good cleaning results do not overload the tub, especially when washing heavily soiled loads. Never load the tub more than 3/4 full.



Overloading may reduce washing efficiency, cause excess wear, and possibly cause creasing or wrinkling of items in the load.

**Note:** To add a forgotten item:

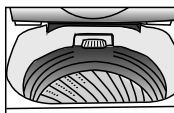
1. Press the **START/PAUSE** button to pause the washer.
2. Wait for the tub to stop turning, then open the door.
3. Add the item, close the door, and then press the **START/PAUSE** button. The cycle will resume.

# How To Use

## Washing a load of laundry

### • Step 3: Add detergent

This washer is designed for high efficiency (HE) powder detergent only. Add the recommended amount of detergent directly into the basket before starting your washer. The normal amount of detergent to use is 1/4 to 1/2 of the maximum amount recommended by the detergent manufacturer. Always reduce the amount of detergent if the load is small or lightly soiled, or if your water is very soft. Never use more than the maximum amount recommended by the detergent manufacturer.



Never pour any liquid bleach directly onto the load. It can cause fabric damage, such as weakening of cloth fibers or color loss.

### • Step 4: Select your desired cycle and options



First, select your desired washing program.

- Heavy (light)      Rapid (light)
- Gentle (light)    Soak (light)
- Normal (light)



Second, select the water level based on a High, Medium or Low load size. Press the Load Size button to change the water level setting.



- 3--large
- 2--medium
- 1--small



Third, user can freely select any combination among WASH, RINSE and SPIN modes according to the dirty degree of clothes.

Detail operation methods are following:

Continuously pressing the washing button to select washing time. (1~15 minutes, or no wash process)



Continuously pressing the rinse button to select rinse times. (1~3 times, or no rinse process)



Continuously pressing the spin button to select the spin time. (3~9 minutes or no spin process)



# How To Use

## Washing a load of laundry

### • Step 5: Start the cycle



Start/Pause

Press the **START/PAUSE** button to start the washing cycle. When the washing cycle begins, the Estimated Time in minutes for the cycle to complete will show and count down in the digital display.



If the washer is running, you must **PAUSE** the program and wait for the basket to stop **COMPLETELY** before opening the door.

# How To Use

## Cycle Guide

Program	Load Size		soak time (about)	Wash Time (about)	Rinse Times	Final Spin Time	Total Time
	Default	Scope					
Normal	Large	Sm	—	12 min	1	5min	31min
		Med	—	12 min	1	5min	31min
		Lg	—	12 min	1	15min	41min
Heavy	Large	Sm, Med, Lg	—	12 min	2	5min	41min
Gentle	Large	Sm, Med, Lg	—	15 min	3	3min	52min
Rapid	Large	Sm, Med, Lg	—	3 min	1	2min	19min
Soak	Large	Sm, Med, Lg	13 min	4 min	2	2min	39min

### Energy efficiency test program :

"Normal" program is the most suitable program to wash normally soiled cotton or linen clothes and is the most efficient program in terms of combined energy and water consumption for washing that type of laundry.

# Care And Cleaning

## Regular Cleaning and Maintenance

### ● Cleaning the exterior

Turn off the water faucets after finishing the day's washing. This will shut off the water supply to your washer and prevent the unlikely possibility of damage from escaping water. Leave the lid open to allow the inside of your washer to dry out. Use a soft cloth to wipe up all detergent, bleach or other pills as they occur. Clean the following as recommended:  
Control Panel - Clean with a soft, damp cloth. Do not use abrasive powders or cleaning pads. Do not spray cleaners directly onto the panel.

### ● Cleaning the interior

Clean the interior of your washer periodically to remove any dirt, soil, odor, mold, mildew, or bacterial residue that may remain in your washer as a result of washing clothes.

Failure to follow these instructions may result in unpleasant conditions, including odors and/or permanent stains on your washer or laundry. Hard water deposits may be removed, if needed. Use cleaners labeled "Washer safe".

### ● Tub clean

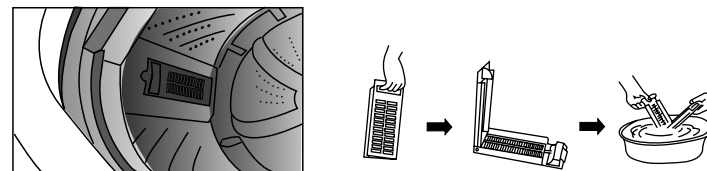
Run a Rapid Cycle with some bleach every month to clean the tub. This will also help to remove mold which may occur inside the washer.

### ● Lint filter clean

There is a built-in lint filter in your washer. It can help to collect lint during washing cycle.

It is suggested to clean the lint filter every 10 cycles.

Take it out and clean the filter with water. Then place it back into the washer.



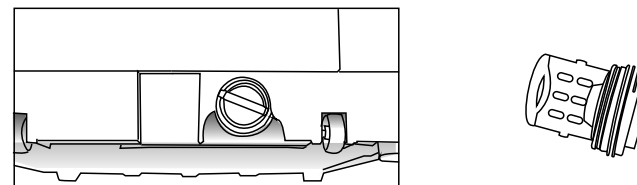
### ● Pump filter clean

There is a built-in Pump filter in your washer. It can help to protect the pump during washing cycle.

It is suggested to clean the lint filter every once every month.

It is suggested to clean the pump filter once every month.

Take the filter out and clean it with water. Then place it back into the washer.



## Troubleshooting

### Before calling for service

Your washing machine is equipped with an automatic error-monitoring system to detect and diagnose problems at an early stage. If your washer does not function properly or does not function at all, check the following before you call for service:

Problem	Possible Cause	Solutions
Thumping sound	Heavy loads may produce a thumping sound. Washer load may be unbalanced.	This is normal. If sound continues, stop and redistribute wash load. Pause the cycle and redistribute the load.
Vibrating noise	Packaging materials were not removed.	See UNPACKING AND REMOVING SHIPPING MATERIAL section in installation instructions.
	Wash load may be unevenly distributed in the tub.	Pause the cycle and redistribute the load.
	Not all leveling feet are resting firmly and evenly on the floor.	See Leveling the Washer in the Installation Instructions.
	Floor not rigid enough.	Make sure that the floor is solid and does not flex. See Flooring in Installation Requirements.
Excessive Sudsing	Too much detergent or incorrect detergent.	HE detergents are formulated specifically for High-Efficiency washers and contain suds reducing agents. Only use detergent with the High-Efficiency (HE) logo.
Water leaking	Inlet hose connection is loose at faucet or washer.	Check hoses for leaks, cracks and splits. Tighten hose connections.
	House drain pipes are clogged.	The washer pumps out water rapidly. Check for water backing up out of drain pipe during drain. If water is coming out of drain, check for proper drain hose installation or restrictions in the drain. Contact a plumber to repair drain pipe.
	Drain hose has come out of drain or is not inserted far enough.	Tie drain hose to inlet hose or standpipe to prevent it from coming out during drain. For smaller drain pipes, insert drain hose into the pipe as far as the drain hose flange. For larger drain pipes, insert the drain hose into the pipe 1-2 in. past flange.
	A large item such as a pillow or blanket is above the top of the tub.	Stop the washer and check the load. Make sure the load does not crest above the top edge of the tub.

## Troubleshooting

### Before calling for service

Problem	Possible Cause	Solutions
Rattling and clanking noise	Foreign objects, such as keys, coins, or safety pins, may be in tub or pump.	Stop washer, check tub and drain filter for foreign objects. If noise continues after washer is restarted, call for service.
Wrinkling	Washer not unloaded promptly.	Always remove items from the washer as soon as the cycle is complete.
	Washer overloaded.	The washer can be fully loaded, but the tub should not be tightly packed with items. The lid of the washer should close easily.
	Hot and cold water inlet hoses are reversed.	Hot water rinse can set wrinkles in garments. Check the inlet hose connections.
Staining	Washer was not unloaded promptly.	Always remove items from the washer as soon as possible after the cycle is complete.
	Clothes were not properly sorted.	Always wash dark colors separately from light colors and whites to prevent discoloration. Never wash heavily soiled items washed with lightly soiled items.
Wash cycle time is longer than usual	The washer automatically adjusts the wash time for laundry, water pressure and other operating conditions.	This is normal. The washer adjusts cycle time automatically to provide optimal results for the selected cycle. The time remaining shown in the display is only an estimate. Actual time may vary.
Musty or mildew odor in washer	Incorrect or too much detergent has been used.	Use only High-Efficiency (HE) detergent in accordance with the manufacturer's instructions.
	Inside of tub was not cleaned properly.	Run an Express cycle with bleach once a month to clean tub and remove any mold from inside washer.

## Troubleshooting

### Before calling for service

Problem	Possible Cause	Solutions
Washer will not turn ON  NOTE: If the washer stopped during a cycle due to a loss of power, the washer will resume the cycle where it stopped when the power is restored.	Power cord is not properly plugged in.	Make sure that the plug is plugged securely into a grounded, 3-prong, 120-VAC, 60-Hz outlet.
	House fuse is blown, circuit breaker has tripped, or power outage has occurred.	Reset circuit breaker or replace fuse. Do not increase fuse capacity. If the problem is a circuit overload, have it corrected by a qualified electrician.
	House fuse is blown, circuit breaker has tripped, due to multiple appliances on one outlet.	Reset circuit breaker or replace fuse. If more than one appliance is connected to the outlet, call an electrician to have an additional circuit installed.
Water leaks	Over sudsing of detergent.	Over sudsing may create leaks, and may be caused by the type and amount of detergent used. High-Efficiency detergent is the only detergent recommended. Make sure that detergent and any additives are put into the correct dispenser compartments. The normal amount of detergent to use is 1/4 to 1/2 of the maximum amount recommended by the detergent manufacturer. Always reduce the amount of detergent if the load is small or lightly soiled. Never use more than the maximum amount recommended by the detergent manufacturer.
Poor stain removal	Previously set stains.	Articles that have previously been washed may have stains that have been set. These stains may be difficult to remove and may require hand washing or pre-treating to aid in stain removal.

## Troubleshooting

### Before calling for service

Problem	Possible Cause	Solutions
Washer will not drain water	Kinked drain hose.	Ensure that the drain hose is not kinked.
	Drain located higher than 48 in. above the floor.	Ensure drain hose is no higher than 4 ft. above bottom of washer and is no more than 5 ft. away from washer.
Washer will not operate	Water supply is turned off.	Ensure the water supply for the washing machine is open.
	Control panel powered off due to inactivity.	This is normal. Press the POWER button to turn the washer on.
	Washer is unplugged.	Make sure cord is plugged securely into a working outlet.
	Controls are not set properly.	Turn both hot/cold faucets fully on. Ensure cycle was set correctly, close lid and press START/PAUSE button.
	Lid is open.	Washer will not operate if lid is open. Close lid and make sure that nothing is preventing the lid to close completely.
	Circuit breaker/fuse is tripped/blown.	Check house circuit breakers/fuses. Replace fuses or reset breaker. The washer should be on a dedicated branch circuit, it will resume the cycle once the power is turned on.
	START/PAUSE was not pressed after a cycle was set.	Press the POWER button, re-select the desired cycle and press the START/PAUSE button. Washer will shut off if START/PAUSE button is not pressed within ten minutes.
	Extremely low water pressure.	Check another faucet in the house to make sure that household water pressure is adequate.
	Washer is too cold.	If washer has been exposed to temperatures below freezing for an extended period, allow it to warm up before pressing the POWER button. Otherwise, display will not come on.
Washer is running under Delay start program.	It is normal if the unit does not operate under Delay start function. It will start automatically after the delay time is out.	

# Troubleshooting

## Before calling for service

Problem	Possible Cause	Solutions
Washer not filling properly	Filter clogged.	Disassemble the water inlet hose and clean the inlet point.
	Inlet hoses may be kinked.	Check that the inlet hoses are not kinked or clogged.
	Insufficient water supply.	Make sure that both hot and cold water faucets are turned on all the way.
	The washer lid is open.	The washer will not operate if the lid is open. Close the lid and make sure that nothing is caught under the lid preventing it from closing completely.
	Hot and cold inlet hoses are reversed.	Check inlet hose connections. Make sure the hot water supply is connected to the hot inlet valve, and the cold water supply is connected to the cold inlet valve.
	Water level is too low.	This is a high efficiency washer. The water will not normally cover the clothes. The fill lever is optimized for the wash motion to achieve the best wash performance.
	Water inlet valve damaged.	Call the service center for service.
Water leaks every load	Hoses not installed correctly.	Check all fill and drain hose connections to ensure that they are tight and secure.

## Error Codes

Error Code	Possible Cause	Solutions
E1	It takes over 30 minutes to fill water but cannot achieve its preset water level.	Check for <b>Washer not filling properly</b> and Water leakage.
E2	The top lid is open.	Close the lid.
E3	The washer runs out of balance for three times.	Redistribute the load.
E4	It takes over 10 minutes to drain water, but does not drain completely.	Check for <b>Washer will not drain water.</b>
E5	The water fills too much to exceed its preset level.	Call to service center for help.

# APPENDIX

## Fabric Care Chart

The following symbols provide garment care direction. The Clothing care labels include symbols for washing, bleaching, drying and ironing, or dry cleaning when necessary. The use of symbols ensures consistency among garment manufacturers of domestic and imported items. Follow care label directions to maximize garment life and reduce laundering problems.

Wash Cycle	Special Instructions	Warning Symbols for laundering
Normal	Line Dry/Hang to Dry	Do Not Wash
Permanent Press / Wrinkle Resistant / Wrinkle Control	Drip Dry	Do Not Wring
Gentle/Delicates	Dry Flat	Do Not Bleach
Hand Wash	Heat Setting	Do Not Tumble Dry
Water Temperature**	High	No Steam (added to iron)
Hot	Medium	Do Not Iron
Warm	Low	Dryclean
Cold	Any Heat	Dry Clean
Bleach	No Heat/Air	Do Not Dry Clean
Any Bleach (when needed)	Iron-Dry or Steam Temperatures	Line Dry/ Hang to Dry
Only Non-Chlorine (color-safe) Bleach (when needed)	High	Drip Dry
Tumble Dry Cycle	Medium	Dry Flat
Normal	Low	For machine-washable wool. Loads should be under 8 pounds.
Permanent Press / Wrinkle Resistant / Wrinkle Control		
Gentle/ Delicates		

\*\* The number of dots represent appropriate wash water temperatures for various items. The temperature range for Hot is 105°-125°F/41°-52°C, for Warm 85°-105°F/29°-41°C and for Cold 60°-85°F/16°-29°C. (Wash water temperature must be a minimum of 60°F/16°C for detergent activation and effective cleaning.) The clothes washer can not ensure these temperatures because the actual temperature of the water entering your washer depends on water heater settings and regional water supply temperatures. For example, cold water entering the home in the northern states during winter may be 40°F/4°C which is too cold for effective cleaning. In this situation, you will need to adjust the water temperature by selecting a warm setting, adding some hot water to the MAX FILL line, or using your Washer's heating option, if available.



**1 YEAR**  
FULL WARRANTY

# ONE YEAR WARRANTY

LAUNDRY

This warranty covers all defects in workmanship and the internal parts contained in this product for 1 year from the date of purchase. Warranty covers the original purchaser of this product only.

You **MUST** have your original purchase receipt in order to obtain your warranty.

Please call the toll-free number below for troubleshooting before contacting the store.

## WHAT WILL BE DONE?

Arctic Wind will replace any unit found to be defective in material or workmanship through a one year over-the-counter exchange with a new or refurbished unit of equal or similar model, at Arctic Wind's discretion. This is a one-time replacement warranty. Defective unit must be returned to the original store of purchase.\*

**THIS WARRANTY COVERS ARCTIC WIND PRODUCTS WITHIN THE UNITED STATES, CANADA, & PUERTO RICO.**  
**THIS WARRANTY DOES NOT COVER:**

- Damages in shipping.
- Damages caused by improper installation or inadequate wiring.
- Damages caused by using the unit during brown-out conditions, circuit interruptions, or as the result of not using product in accordance with provided instructions.
- Damage from services performed by an unauthorized service center.
- Disposal, installation or removal fees/costs.
- Damage caused by lack of airflow or neglect from proper maintenance (i.e. cleaning).
- Any performance issues that fall outside of the 1 year warranty.
- Damages incurred to the home during installation, including but not limited to floors, walls, and furniture.
- Rust on interior or exterior of unit.
- Products with serial numbers that have been removed or altered.
- Products used in a commercial setting.
- Display, floor, or open box models.
- Damage to the unit caused by acts of nature.
- Any changes in appearance or modifications made to the unit.
- Improper matching of parts or the use of components/accessories not compatible with the unit or supplied by the manufacturer.

**NOTE:** Some states do not allow the exclusion or limitation of incidental or consequential damages. This limitation or exclusion may not apply to you.

**IF YOU WOULD LIKE TO REGISTER YOUR ARCTIC WIND PRODUCT, PLEASE VISIT [WWW.ARCTICWINDAC.COM](http://WWW.ARCTICWINDAC.COM)**

If you have questions about your warranty, please call **855-663-9463**.

**HOURS OF OPERATION:** Monday-Friday, 8:30 am-4:30 pm (cst.)

\*Store policy may override manufacturer's exchange warranty. Contact your store for details.





ARCTIC WIND®

[arcticwindac.com](http://arcticwindac.com)

FOR ASSISTANCE PLEASE CALL (855) 663-9463

AW/APW9/09032020

Distributed by Perfect Aire LLC, 5401 Dansher Road, Countryside, IL 60525