

iroda



MJ-352CR

PRECISION JET LIGHTER

Instruction Manual

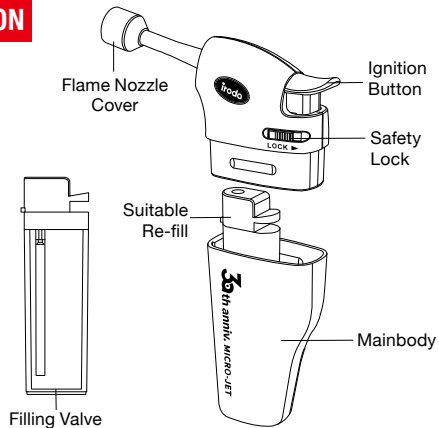
READ INSTRUCTIONS AND WARNINGS BEFORE USE

IMPORTANT SAFETY INSTRUCTIONS

Warnings:

- Read instructions before use.
- DO NOT refill, ignite or use near open flame, heater, furnace or combustible materials.
- KEEP AWAY FROM CHILDREN.
- Only use Suitable Re-fill or similar product.
- Be extremely careful as the flame is almost invisible in daylight or under strong light.
- Do not touch the nozzle cover during use, or before sufficient time has passed for cooling.
- Always be sure the unit is cool, and the lighter removed, before storing.
- Store properly when not in use, switch the safety lock to the locked position.
- Keep in a dry place, out of the reach of children.
- Do not use continuously for more than five (5) minutes.
- If your MJ-352CR malfunctions do not try to repair. Contact your dealer or online support for help.

DESCRIPTION



4

HOW TO USE PRECISION JET LIGHTER MJ-352CR

REFILLING

- Use only high-quality butane gas.
 - Refill in a well-ventilated area away from any ignition source and other people.
1. Hold butane canister upside down when filling (Fig. 1)
 2. Firmly press nozzle of butane fuel into the **Filling Valve** until you see the fuel fill to about 3/4 or more full.
 3. Wait for a few minutes before use.

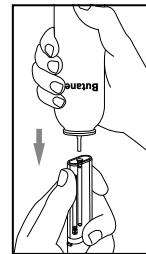


Fig.1

5

IGNITION

1. Remove the upper body, then place the suitable re-fill into the main body. (Fig. 2)
2. Slide the two halves of the body back together.
3. Switch the **Safety Lock** to the unlocked position, then, slowly press down the **Ignition Button** to the maximum point. (Fig. 3)

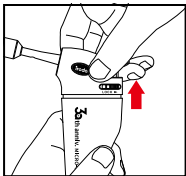


Fig.2

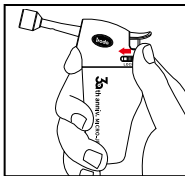
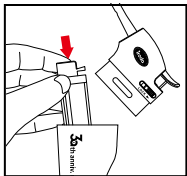


Fig.3

- Your MJ-352CR is now fired up and ready to use.
(Note: if no flame appears, adjust the regulator on the suitable re-fill and repeat ignition steps again.)
- As the gas in the lighter is consumed, the regulator will need to be adjusted periodically to ensure a proper flame.
- When the ignition button is released, there will be a short delay before the flame is completely extinguished.

When the MJ-352CR is not in use, remove the suitable re-fill.

TROUBLE SHOOTING

- To reduce the risk of personal injury, property damage, or damage to your MJ-352CR, do not attempt to repair the unit body.

PROBLEM	PROBABLE CAUSE	HOW TO CORRECT
Cannot Press down on the ignition	a. Safety lock not fully disengaged b. Previous use was over 5 min causing the lighter to overheat.	a. Re-read IGNITION steps b. Wait until lighter has cooled down
Does not Ignite/no flame	a. Empty Suitable Re-fill b. Re-fill regulator set too high or too low. c. Pushing on/off ignition switch too fast.	a. Refill with butane fuel b. Adjust regulator to a higher or lower position. c. Re-read IGNITION steps

SPECIAL WARNING

- This product, when used for soldering and similar applications, produces chemicals known to the State of California to cause cancer and birth defects or other reproductive harm.
- Department of Transportation Hazardous Materials Regulations forbid the carriage of butane or other flammable gas products on passenger aircraft. Do not pack this item or any other flammable gas item, in any checked or carry-on baggage.

SPECIFICATIONS

Dimensions	Length	105 mm (4.1 inches)
	Width	25 mm (1 inch)
	Height	120 mm (4.7 inches)
Weight	78 ± 2 g (Empty Tank)	
Fuel	Suitable Lighter Re-fill (Butane)	
Flame Temp.	≈ 2400 °F (1300 °C) Blue Flame	
Operating Time	Approx. 37 minutes per Suitable Re-fill cartridge	



This appliance may be filled with any cartridges marked "Butane" complying with EN 417.

WARNING:

- Use outdoors only or use in well ventilated areas.
- Read the instructions before using the appliance.

CAUTION:

- Accessible parts may be very hot. Keep young children away from the appliance.



The logo for 'iroda' features the word in a bold, lowercase, sans-serif font. The letter 'i' is black with a red dot above it. The letters 'r', 'o', 'd', and 'a' are solid black. The overall style is clean and modern.

iroda

www.pro-iroda.com