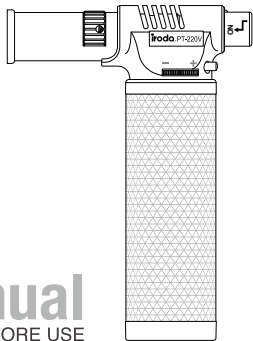


iroda



PT-220V

BUTANE TORCH

Instruction Manual

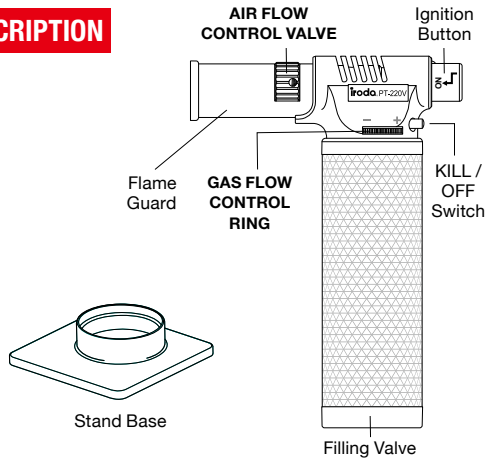
READ INSTRUCTIONS AND WARNINGS BEFORE USE

IMPORTANT SAFETY INSTRUCTIONS

Warnings:

- Read instructions before use.
- DO NOT refill, ignite or use near open flame, heater, furnace or combustible materials.
- KEEP AWAY FROM CHILDREN.
- Only use high-quality butane gas.
- Be extremely careful as the flame is almost invisible in daylight or under strong light.
- Do not touch the nozzle cover during use, or before sufficient time has passed for cooling.
- Always be sure the unit is cool before storing.
- Store properly when not in use.
- DO NOT expose to heat above 120°F (50°C) and avoid prolonged exposure to the sun.
- Do not use continuously for more than five (5) minutes.
- If your PT-220V malfunctions do not try to repair. Contact your dealer or online support for help.

DESCRIPTION



4

HOW TO USE BUTANE TORCH PT-220V

REFILLING

- Use only high-quality butane gas.
 - Refill in a well-ventilated area away from any ignition source and other people.
1. Hold butane canister upside down when filling (Fig. 1)
 2. Firmly press nozzle of butane fuel into the **Filling Valve**
 3. Stop filling when gas overflows. (Gas overflow during refilling is normal and does not indicate a leak.)
 4. Wait for a few minutes before use to allow fuel to stabilize.

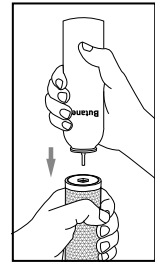


Fig.1

5

IGNITION

1. To ignite the pro-torch, turn the ignition button counterclockwise and simply press the **ignition button**. (Fig. 2) The **safety kill/off switch** will automatically pop out upon pressing of the ignition button.
2. To shut off the pro-torch, press the **kill/off switch**. (Fig. 3)

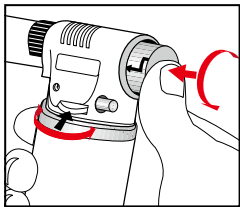


Fig.2

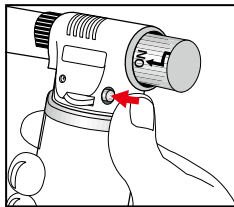


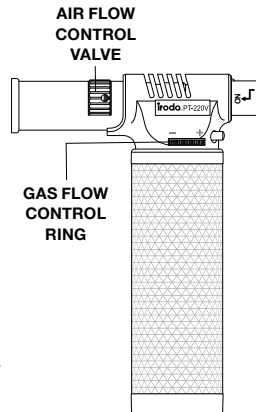
Fig.3

6

FLAME ADJUSTMENT

The flame of the pro-torch may be adjusted in two ways:

- You may increase gas flow and flame length by turning the **GAS FLOW CONTROL RING** in a counter-clockwise direction.
- The flame size, length and temperature may also be adjusted by changing the airflow. Turn the **AIR CONTROL VALVE** in either direction to adjust the air flow.



7

TROUBLE SHOOTING

- To reduce the risk of personal injury, property damage, or damage to your PT-220V do not attempt to repair the unit body.

SPECIAL WARNING

- This product, when used for soldering and similar applications, produces chemicals known to the State of California to cause cancer and birth defects or other reproductive harm.
- Department of Transportation Hazardous Materials Regulations forbid the carriage of butane or other flammable gas products on passenger aircraft. Do not pack this item or any other flammable gas item, in any checked or carry-on baggage.

SPECIFICATIONS

Dimensions	Length	100 mm (3.9 inches)
	Height	138 mm (5.4 inches)
	Grip Diameter	37 mm (1.5 inches)
	Base	70 × 70 mm (2.8 × 2.8 inches)
Weight	10 oz (273 ± 2 g) (Empty Tank)	
Fuel Tank Capacity	2.03 oz (60 ml)	
Fuel	Butane	
Flame Temp.	≈ 2200 °F (1200 °C)	
Operating Time	Mid Setting	Approx. 170 minutes per refill



This appliance may be filled with any cartridges marked
“Butane” complying with EN 417.

WARNING:

- Use outdoors only or use in well ventilated areas.
- Read the instructions before using the appliance.

CAUTION:

- Accessible parts may be very hot. Keep young children
away from the appliance.

The logo for 'iroda' features the word in a bold, lowercase, sans-serif font. A small red circle is positioned above the letter 'i', serving as a dot or a design element.

iroda

www.pro-iroda.com