

**SUPER  
HANDY**

# 550-LB. & 1100-LB. Mini Lever Hoist Instruction Manual

---



**WARNING:**

Read carefully and understand all INSTRUCTIONS before operating. Failure to follow the safety rules and other basic safety precautions may result in serious personal injury. Save these instructions in a safe place and on hand so that they can be read when required. Keep these instructions to assist in future servicing.

---

## TECHNICAL DETAILS

Item No.	Rated Capacity	Lift Height (ft.)	Head Room (in.)	Load Chain Dia. (mm)
GUT007	550 lb.	5	8-1/4	4
GUT008	1100 lb.	5	10	4.3

550-lb. & 1100-lb. Mini Lever Hoist is versatile and can be used for ship-building, power plants, and construction-sites for installing machinery, lifting goods, and dragging loads in narrow and difficult angles.

## IMPORTANT SAFETY INFORMATION

### ⚠ WARNING

1. Read and understand all instructions. Failure to follow all instructions may result in serious injury or property damage.
2. The warnings, cautions, and instructions in this manual cannot cover all possible conditions or situations that could occur. Exercise common sense and caution when using this tool. Always be aware of the environment and ensure that the tool is used in a safe and responsible manner.
3. Do not allow persons to operate or assemble the product until they have read this manual and have developed a thorough understanding of how it works.
4. Do not modify this product in any way. Unauthorized modification may impair the function and/or safety and could affect the life of the product. There are specific applications for which the product was designed.
5. Use the right tool for the job. DO NOT attempt to force small equipment to do the work of larger industrial equipment. There are certain applications for which this equipment was designed. This product will be safer and do a better job at the capacity for which it was intended. DO NOT use this equipment for a purpose for which it was not intended.
6. Industrial or commercial applications must follow OSHA requirements.

## WORK AREA SAFETY

1. Inspect the work area before each use. Keep work area clean, dry, free of clutter, and well-lit. Cluttered, wet, or dark work areas can result in injury. Using the product in confined work areas may put you dangerously close to cutting tools and rotating parts.
2. Do not use the product where there is a risk of causing a fire or an explosion; e.g., in the presence of flammable liquids, gases, or dust. The product can create sparks, which may ignite the flammable liquids, gases, or dust.
3. Do not allow the product to come into contact with an electrical source. The tool is not insulated and contact will cause electrical shock.
4. Keep children and bystanders away from the work area while operating the tool. Do not allow children to handle the product.
5. Be aware of all power lines, electrical circuits, water pipes, and other mechanical hazards in your work area. Some of these hazards may be hidden from your view and may cause personal injury and/or property damage if contacted.

## PERSONAL SAFETY

1. Stay alert, watch what you are doing, and use common sense when operating the tool. Do not use the tool while you are tired or under the influence of drugs, alcohol, or medication. A moment of inattention while operating the tool may result in serious personal injury.
2. Dress properly. Do not wear loose clothing, dangling objects, or jewelry. Keep your hair, clothing and gloves away from moving parts. Loose clothes, jewelry, or long hair can be caught in moving parts. Air vents on the tool often cover moving parts and should be avoided.

3. Wear the proper personal protective equipment when necessary. Use ANSI Z87.1 compliant safety goggles (not safety glasses) with side shields, or when needed, a face shield. Use a dust mask in dusty work conditions. Also use non-skid safety shoes, hardhat, gloves, dust collection systems, and hearing protection when appropriate. This applies to all persons in the work area.
4. Do not overreach. Keep proper footing and balance at all times.
5. Do not use the tool when tired or under the influence of drugs, alcohol or medication.
6. Remove keys or wrenches before connecting the tool to an air supply, power supply, or turning on the tool. A wrench or key that is left attached to a rotating part of the tool may cause personal injury.
7. Secure the work with clamps or a vise instead of your hand when practical. This safety precaution allows for proper tool operation using both hands.

### **HOIST USE AND CARE**

1. Do not force the hoist. Products are safer and do a better job when used in the manner for which they are designed. Plan your work, and use the correct product for the job.
2. Check for damaged parts before each use. Carefully check that the product will operate properly and perform its intended function. Replace damaged or worn parts immediately. Never operate the product with a damaged part.
3. Do not use a product with a malfunctioning switch. Any power tool that cannot be controlled with the power switch is dangerous and must be repaired by an authorized service representative before using.
4. Disconnect the power/air supply from the product and place the switch in the locked or off position before making any adjustments, changing accessories, or storing the tool. Such preventive safety measures reduce the risk of starting the tool accidentally.
5. Store the product when it is not in use. Store it in a dry, secure place out of the reach of children. Inspect the tool for good working condition prior to storage and before re-use.
6. Use only accessories that are recommended by the manufacturer for use with your product. Accessories that may be suitable for one product may create a risk of injury when used with another tool. Never use an accessory that has a lower operating speed or operating pressure than the tool itself.
7. Keep guards in place and in working order. Never operate the product without the guards in place.
8. Do not leave the tool running unattended.

### **BEFORE EACH USE**

1. To prevent serious injury or property damage, read and understand this manual before operating.
2. To reduce the risk of injury, operate hoist using manual power only.
3. Do not exceed the rated load capacity.
4. Do not use hoist with extension on lever handle.
5. Do not use in a way that causes either hook to be side loaded.
6. Do not use chain hoist as a sling.
7. Do not support load on hook unless hook is designed for tip loading.
8. Do not operate if restricted from forming a straight line from hook to hook in the direction of loading.
9. Inspect for damaged parts before use. Do not use if damaged.
10. Examine each chain link for damage or weak links before use. Do not operate a hoist with a twisted, kinked, or damaged chain.
11. Do not lift people, animals, or loads above either.
12. Do not pull chain at an angle.
13. Keep bystanders away while hoist is loaded.
14. Not for use by or around children.

## OPERATING INSTRUCTIONS

1. To reduce the risk of injury, operate hoist using manual power only.
2. Do not exceed the rated load capacity.
3. Do not use hoist with extension on lever handle.
4. Do not use in a way that causes either hook to be side loaded.
5. Do not use chain hoist as a sling.
6. Do not support load on hook unless hook is designed for tip loading.
7. Do not operate if restricted from forming a straight line from hook to hook in the direction of loading.

1. Properly seat the suspension hook on the supporting structure at its intended load bearing point (Figure 1). Do not allow the hook hitch to support any part of the load. Do not apply the load to the point of the hook (Figure 1).

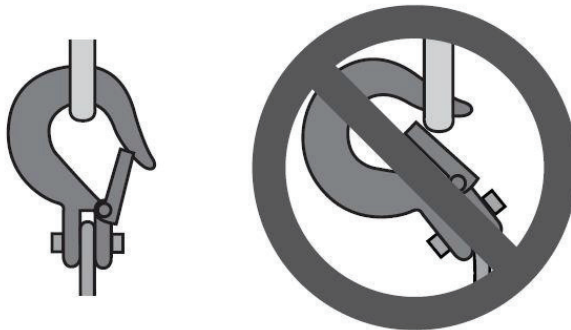


Figure 1

Correct and incorrect suspension hook attachment

2. Properly seat the sling or other device in the base (bowl or saddle) of the hook (Figure 2). Do not allow the hook hitch to support any part of the load.
3. Do not apply the load to the point of the hook (Figure 2).

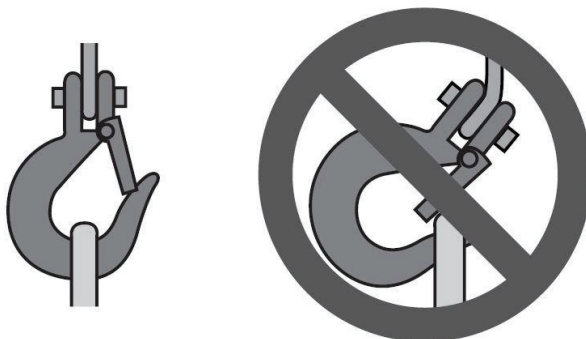
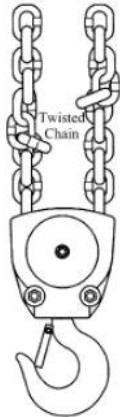
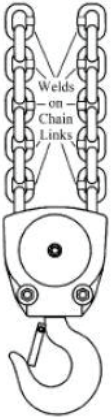


Figure 2

Correct and incorrect hook attachment

1. Set the top hook securely.
2. Correctly center the load on the bottom hook. Incorrect loading is dangerous to the operator, the lever hoist, and the load.
3. Place the selector switch on the handle in the center neutral position. This will allow free-wheel mode. The chain will only be in the free-wheel mode when there is no load. Take up slack by pulling on loose or free end or by turning the hand wheel.
4. Move the selector switch to the UP position. Ratchet the lever to raise or pull the load. Do not overload the lever hoist.
5. To release or lower the load, turn selector switch on the handle to the DOWN position and ratchet the handle.

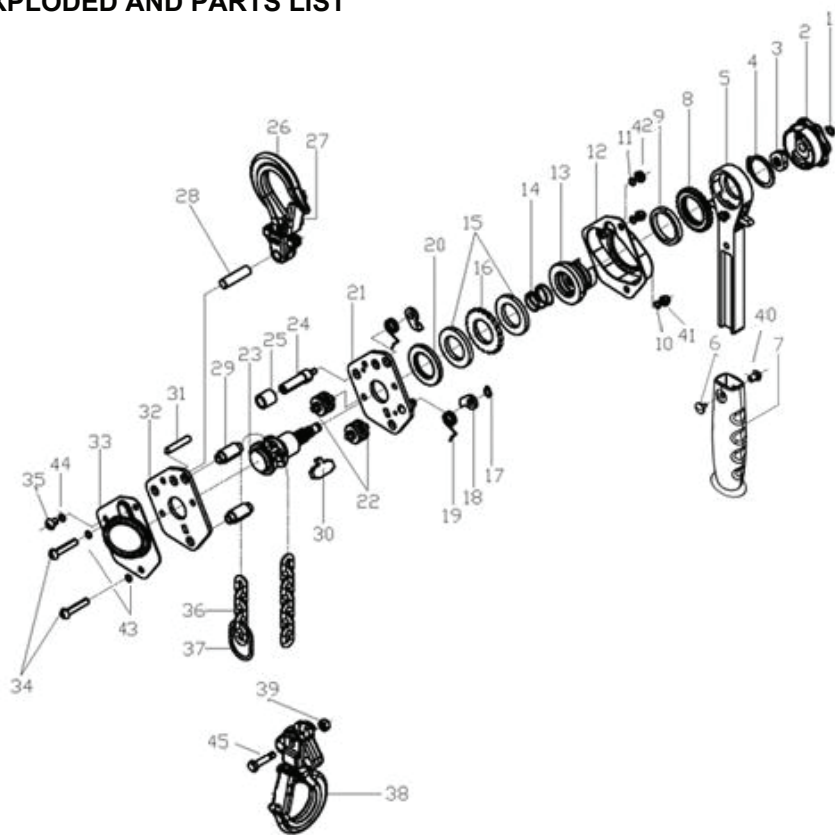


## MAINTENANCE

Maintain the product by adopting a program of conscientious repair and maintenance in accordance with the following recommended procedures. It is recommended that the general condition of any tool be examined before it is used. Keep your tool in good repair. Keep handles dry, clean, and free from oil and grease. The following chart is based on a normal operation schedule.

Maintenance Interval	Maintenance Point
Daily before operating	Inspect the general condition of the hoist. Check for loose screws, misalignment or binding of moving parts, cracked or broken parts, and any other condition that may affect its safe operation. If abnormal noise occurs, have the problem corrected before further use. Do not use damaged equipment.
Quarterly (every 3 months)	<ol style="list-style-type: none"> <li>1. Keep all moving parts lubricated at all times. Use common gear oil. For best results, the load chain should be cleaned with an acid free cleaning solution prior to lubrication.</li> <li>2. The hoist should be clean and dry, and the load chain and all other exposed metal should be well lubricated when storage.</li> <li>3. The hoist should be covered or brought inside after using outdoor.</li> </ol>
Annually	The possibility of corrosion on components of the hoist increases for installations where salt air and high humidity are present. Make frequent and regular inspections of the hoist's condition and operation when using it outdoors.

## EXPLODED AND PARTS LIST



Part No.	Description	Q'ty	Part No.	Description	Q'ty
1	Snap Ring	1	24	Stay Bolt II	1
2	Hand Wheel	1	25	Support	1
3	Stop Knob	1	26	Top Hook Assembly	1
4	Snap Ring 1	1	27	Safety Latch Assembly	2
5	Lever Handle Assembly	1	28	Top Hook Shaft	1
6	Hex Head Screw	1	29	Stay Bolt	2
7	Rubber Grip	1	30	Stripper	1
8	Change Over Gear	1	31	Pin	1
9	Bushing	1	32	Gear Side Plate	1
10	Acorn Nut	2	33	Gear Cover	1
11	Nut	1	34	Socket Head Screw	2
12	Brake Cover	1	35	Socket Head Screw	1
13	Disc Hub	1	36	Load Chain	1
14	Twisting Spring	1	37	End Chain Ring	1
15	Friction Disc	2	38	Bottom Hook Assembly	1
16	Ratchet Disc	1	39	Lock Washer	1
17	Snap Ring	2	40	Nut	1
18	Pawl	2	41	Lock Washer	2
19	Pawl Spring	2	42	Lock Washer	1
20	Brake Seat	1	43	Lock Washer	2
21	Lever Side Plate Assembly	1	44	Lock Washer	1
22	Guide roller	2	45	Lock Nut	1
23	Load Sheave	1			



Great Circle USA  
Support Line: 1-866-493-0524  
[help@greatcircleus.com](mailto:help@greatcircleus.com)  
[www.greatcircleus.com](http://www.greatcircleus.com)