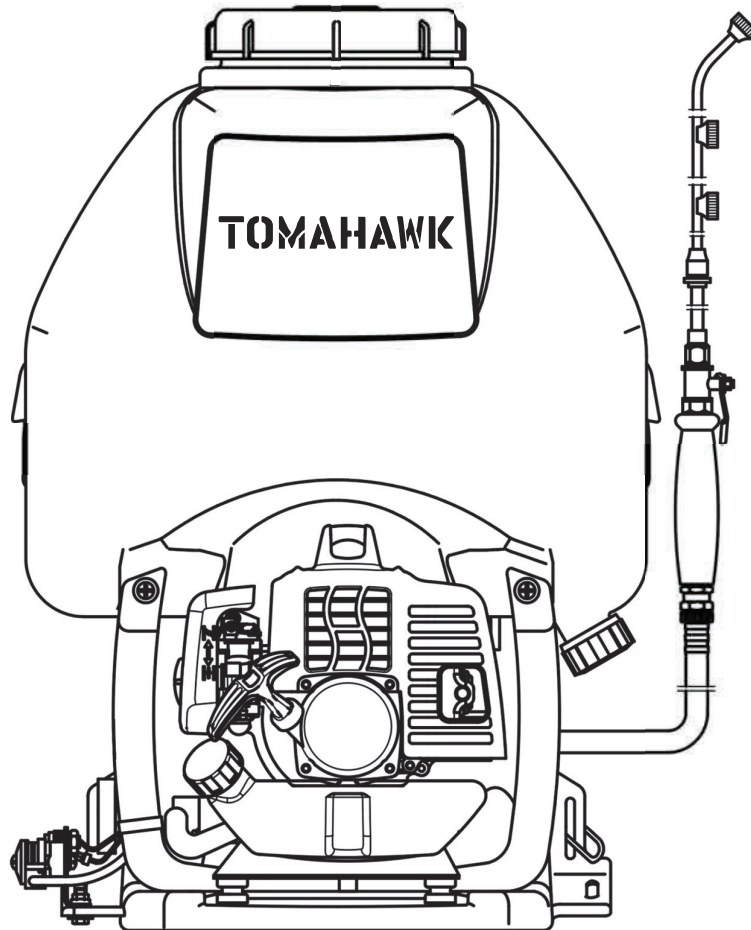


TOMAHAWK

TCS6.5
BACKPACK CONCRETE SPRAYER

Instruction Manual



For safe operation follow all safety precautions in Instruction Manual. Improper use can cause serious injury.

! WARNING

FOR USE WITH WATER-BASED OR WATERBORNE COMPOUNDS ONLY.

DO NOT SPRAY SOLVENT BASED OR EXPLOSIVE LIQUIDS. FAILURE TO COMPLY MAY CAUSE SERIOUS BODILY HARM OR DEATH.

READ OWNER'S MANUAL BEFORE OPERATION

TABLE OF CONTENTS

TABLE OF CONTENTS	2
OPERATOR PRECAUTIONS	3
WARNINGS	4
CONCRETE SPRAYER OPERATION	5
TECHNICAL SPECIFICATIONS	8
MAIN APPLICATIONS	8
TROUBLESHOOTING	9
CLEANING AND STORAGE	11
PROPOSITION 65	12
EPA WARRANTY	12
TOMAHAWK POWER WARRANTY	16
PARTS MANUAL	17

OPERATOR PRECAUTIONS

1. This product emits carbon monoxide, an invisible and odorless toxin. Do not run this product indoors at any time.
2. Always turn engine off before adding fuel to the tank.
3. To avoid electrocution, do not touch the cap of the spark plug or wiring while the engine is on.
4. Do not touch the surface of the muffler and cylinder while the engine is running. It is extremely hot.
5. Do not spill pesticide or chemicals when filling or emptying tank.
6. Keep the area clear of people, children, and pets during operation of this machine.

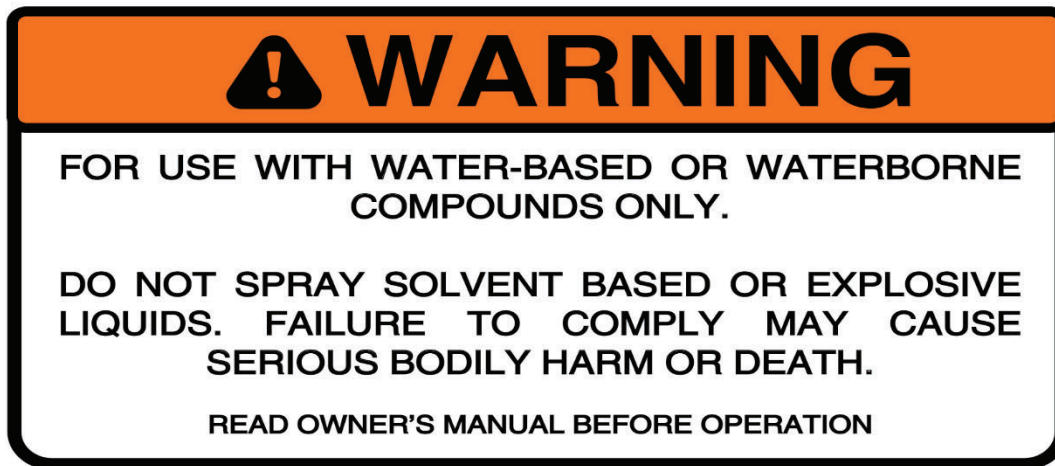
Equipment Warnings

1. The TGS30 is a 2 stroke engine that runs on a minimum of 50:1 fuel mix. It uses 91 octane gas and two cycle engine oil. Note: 50:1 pre-mix fuel is ideal for this product as it contains fuel stabilizer to ensure longevity of the equipment. Premix fuel can be found at your local hardware store or auto shop.
2. After starting the engine, keep the throttle at a low speed for several minutes before running at full throttle.
3. Gasoline is an extremely flammable fuel. When operating keep away from any flames. Do not smoke while operating.
4. Do not spray in the direction of others.
5. Understand the operation of the machine and understand how to shut off the equipment quickly in case of an emergency.

Chemical Handling

1. Wear ear protection
2. Wear eye protection
3. Use a mask to protect mouth and face against dust and chemicals
4. Wear closed toed protective shoes
5. Wear pants and long sleeve shirt to protect to avoid chemical contact with arms and legs
6. Wear gloves to avoid contact with chemicals
7. After operating the machine, wash hands and clothing immediately

WARNINGS



This concrete sprayer is meant for use with water-based or waterborne compounds only. Do not spray solvent-based or explosive liquids with this sprayer. Failure to comply may cause serious bodily harm or death.



Do not spray in the direction of others, as the pressure of this sprayer can blow small objects at great speed.



Toxic exhaust fumes may be colorless and odorless and contain unburned hydrocarbons and benzol. Never operate the machine in enclosed or poorly ventilated locations

During operation, the muffler or catalytic muffler and surrounding cover may become extremely hot. Avoid contact during and immediately after operation. Always keep exhaust area clear of flammable debris. Allow the engine and muffler to completely cool before performing any maintenance activities. After working, wash your hands and clean all of clothing. **NOTE:** Residual pesticide can stain what you touch.

Open the fuel cap carefully to allow any pressure build up in the tank to release slowly and avoid fuel spillage.

Fuel your power tool only in well-ventilated areas.
If you spill fuel, wipe the machine immediately – if fuel gets on your clothing, change immediately.



Check for leakage. To reduce the **risk of serious or fatal burn injuries**, do not start or run the engine until the leak is fixed.



After fueling, tighten down the screw-type fuel cap as tight as possible.

This reduces the risk of unit vibrations causing the fuel cap to loosen or come off and spill fuel.

CONCRETE SPRAYER OPERATION

Fueling

- This engine is certified to operate on unleaded gasoline and two-stroke engine oil at a mix ratio of 50:1.
- This engine requires a mixture of high-quality gasoline and two- stroke air cooled engine oil.
- Use mid-grade unleaded gasoline with a minimum octane rating of 91 and no more than 10% ethanol content.
- Keep the fuel tank far away from flames or sparks. Do not smoke near fuel.
- When adding pre-mixed fuel to the engine, use a funnel to avoid spillage.
- When the machine is running, do not add more to the fuel tank.
- Open the fuel cap carefully to allow and pressure build-up in the tank to release slowly and avoid fuel spillage.
- At the end of a season, drain all fuel from gas tank and use fuel stabilizer to insure a clear carburetor for your next season.

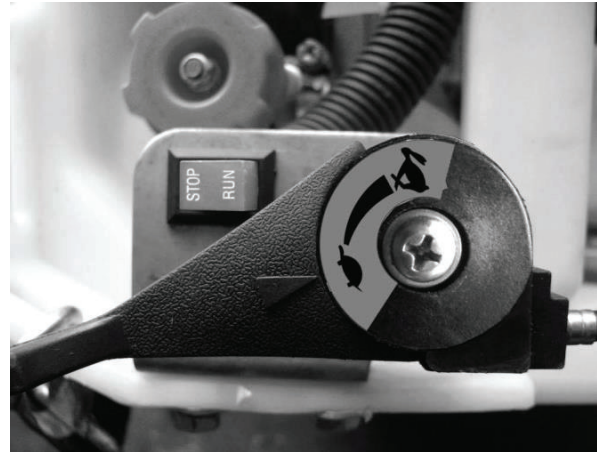
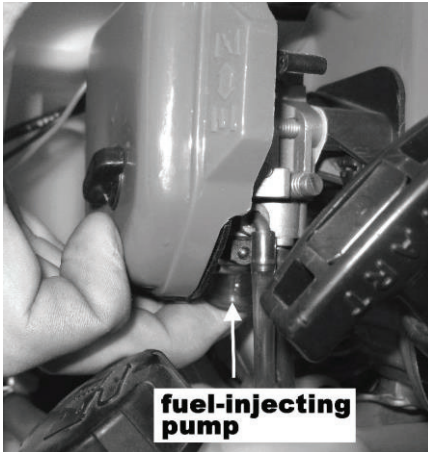


NOTE: **Gasoline is an extremely flammable fuel.** Keep clear of naked flames. Do not spill any fuel – do not smoke. Always **shut off the engine** before refueling. Do not fuel a hot engine – **fuel may spill and cause a fire.**

Starting Your Engine

When starting the engine make sure the engine is fueled and the solution tank is prepped for spraying.

1. Move the choke to the closed position.
2. Prime the engine 4-5 times, or until fuel is visibly passing through the fuel lines.
3. Pull the recoil starter until the engine fires.
4. After the engine starts, slowly move the choke to the open position.
5. Let the engine idle for several minutes and then begin operation.



Stopping Your Engine

1. Move the water valve on the sprayer's wand to the closed position to stop the flow of liquid pesticide.
2. Press the kill switch below the engine throttle lever
 - a. Kill switch is on the operator's left side when wearing the backpack

Spraying Operation

Using the accelerator (on the operator's left side) will control the speed of the engine. This will adjust the distance and spread of the spraying.

NOTE: Operation during weather with little wind is recommended. For example, in the early morning or in the late afternoon. This can reduce the evaporation and drift of chemicals and improve spraying efficiency.

1. Operator should face his/her back to the wind.
2. If your mouth or eyes are spattered with chemicals, wash them with clean water and go to see a doctor immediately.
3. If the operator has a headache or dizziness, stop working at once
4. For the operator's safety, spraying must be carried out strictly according to the instruction of the solutions requirements.

Dolly Mobility and Maneuverability

For even greater mobility around job sites and concrete finishing projects, the Tomahawk Power Concrete Sprayer can be easily strapped to a dolly.

For dolly availability, pricing, and installation reach out to a Tomahawk Power representative at www.tomahawk-power.com or call (866) 577-4476 for more information.



TECHNICAL SPECIFICATIONS

Brand	Tomahawk Power
Model	TPS25C
Engine Type	2 Stroke
Engine Power	1.8 HP
Tank Capacity	6.6 Gallons
Water Absorption Volume	1.45 Gallons
Working Pressure	50 - 435 PSI
Fuel Type	50:1 Gasoline / Oil Mixture
Start Type	Recoil
Dimensions	18" x 13" x 25"
Net Weight	20 lbs

MAIN APPLICATIONS

This Tomahawk Power Concrete Sprayer is the ideal portable tool for applying most water based concrete curing compounds, retardents, and sealants - achieve superior finishes with consistent even spraying. 10X more efficient than manual pump sprayer, never pump again and maintain constant pressure up to 435 PSI for even spraying with a powerful 1.8HP engine.

Features

- Built for Professionals - Perfect for applying most water-based concrete curing compounds, retardents, sealants, and more.
- Never Pump, Never Lose Pressure - Maintain constant pressure up to 435 PSI for even spraying with powerful 1.8HP engine.
- Adjustable PSI to your ideal pressure needs.
- Spray Faster - Cover 1 acre in less than 15 minutes, 10X Faster than Pump Sprayers
- Superior Comfort - With even weight distribution, enhanced padding and straps reduce fatigue
- Attachment Compatible - Works with most brass attachments for the ideal spraying pattern

For Use with Water-Based and Waterborne Compounds Only, including

- Concrete Curing Agents
- Concrete Dyes
- Concrete Form Release Agents
- Disinfectant Sprays
- Retardents
- Sealants
- Top Cast Compounds
- **And Many More!**

TROUBLESHOOTING

Engine Troubleshooting Guide

Problem	Cause	Remedy
Fails to start	Fail to push the fuel-injecting pump	Push continuously
	Water mixed with fuel	Replace the fuel
	Deterioration or carbon deposit of spark plug	Replace the plug
	Bad contact between spark plug and lead wire	Check spark plug
It starts but cannot run at high speed	The choke is not on the full open position	Open to full position
	Wrong ratio of fuel	Replace
	Water in fuel	Replace the fuel
It runs but does not work efficiently	The air filter is dirty	Check and clean
	Outlet of cylinder and muffler are dirty	Remove the dirt
	Piston, piston ring, cylinder have been worn	Replace
Stops while running	Fuel is out	Add fuel
	The lead wire of plug is loose	Check and replace
	Plug covered with carbon	Replace the plug
	The filter is clogged	Clean
	Water in fuel	Replace fuel
	The air hole in the tank lid is clogged	Clean

Troubleshooting for Spraying

Problem	Cause	Remedy
Liquid does not spray out	Inlet valve and outlet valve blocked	Replace or clean
	Washer is damaged	Replace
	6004Z bearing is damaged	Replace
	Piston is damaged	Replace
Low or no spraying pressure	Not enough pressure	Regulate
	Not enough elastic force on regulating spring	Replace
	Corrosion resistant steel ball worn	Replace
	Pressure regulating valve seat worn	Replace
Pressure is fine but spraying is low	Piston is worn	Replace
	Piston running distance is not enough	Replace
	Inlet valve and outlet valve are worn	Replace
	Spraying parts are clogged	Clean
Spraying mist is low	The holes of spraying sheet are worn	Replace
	Spraying parts are clogged	Clean

SPRAYER CLEANING AND STORAGE

Sprayer Cleaning



Immediately after each use of your Tomahawk Concrete Sprayer it is important to clean it properly. Fill the solution tank of the sprayer with 2-3 gallons of water. Start the engine and proceed to spray the water into a waste receptacle. Routine cleaning will help to clean out the sprayer's pump, hoses, and spraying attachments – while reducing the chances of the system clogging.

DO NOT use Xylene or any explosive chemical in the cleaning process. This concrete sprayer is meant for use with water-based or waterborne compounds only. Do not spray solvent-based or explosive liquids with this sprayer. Failure to comply may cause serious bodily harm or death.

Sprayer Storage

For long-term storage of the sprayer, first perform all regular maintenance procedures and needed repairs. Empty the fuel tank. Disconnect the fuel supply line from the carburetor and depress the primer bulb until fuel stops discharging from the fuel-return line. Start the engine and allow it to run until it stops. Pull the starter cord a few times to remove any excess fuel from the engine. Remove the spark plug and insert a small amount of oil into the cylinder. Slowly pull the starter cord and bring the piston to a position closest to the spark plug hole. Re-install the spark plug. Apply a thin coating of oil to all the metal surfaces and store the duster in a dry place.

PROPOSITION 65

 **WARNING:** 

The engine exhaust from this product contains chemicals known to the State of California to cause cancer, birth defects or other reproductive harm.

EPA WARRANTY

CALIFORNIA AND FEDERAL EMISSION CONTROL WARRANTY STATEMENT YOUR WARRANTY RIGHTS AND OBLIGATIONS

The California Air Resources Board, the United States Environmental Protection Agency and Tomahawk Power, LLC are pleased to explain the emissions control system warranty on your 2018-2019 small engine/equipment (SORE). In the United States and California, new small engine/equipment must be designed, built and equipped to meet the State's stringent anti-smog standards. Tomahawk Power, LLC must warrant the emissions control system on your small engine/equipment for the periods of time listed below provided there has been no abuse, neglect or improper maintenance of your small engine/equipment. Your emission control system may include parts such as the carburetor, fuel-injection system, the ignition system, catalytic convertor, fuel tanks, fuel lines, fuel caps, valves, canisters, filters, vapor hoses, belts, clamps, connectors, and other associated emission related components. For engines less than or equal to 80 cc, only the fuel tank is subject to the evaporative emission control warranty requirements of this section.
(California only)

Where a warrantable condition exists, Tomahawk Power, LLC will repair your small off-road engine/equipment at no cost to you including diagnosis, parts and labor.

MANUFACTURER'S WARRANTY COVERAGE:

The emissions control system is warranted for two years. If any emissions-related part on your small engine/equipment is defective, the part will be repaired or replaced by Tomahawk Power, LLC.

OWNER'S WARRANTY RESPONSIBILITIES:

As the small engine/equipment owner, you are responsible for the performance of the required maintenance listed in your owner's manual. Tomahawk Power, LLC recommends that you retain all receipts covering maintenance on your small engine/ equipment, but Tomahawk Power, LLC cannot deny warranty solely for the lack of receipts or for your failure to ensure the performance of all scheduled maintenance.

As the small engine/equipment owner, you should however be aware that Tomahawk Power, LLC may deny your warranty coverage if your small engine/equipment or a part has failed due to abuse, neglect, improper maintenance or unapproved modifications. You are responsible for presenting your small engine/equipment to distribution center or service center authorized by Tomahawk Power, LLC as soon as the problem exists. The warranty repairs should be completed in a reasonable amount of time, not to exceed 30 days.

If you have any questions regarding your warranty rights and responsibilities, you should contact Tomahawk Power, LLC customer service representative at 1-866-577-4476 or Email: support@tomahawk-power.com.

DEFECTS WARRANTY REQUIREMENTS

(a)The warranty period begins on the date the small engine/equipment is delivered to an ultimate purchaser.

(b)General Emissions Warranty Coverage. Tomahawk Power, LLC warrants to the ultimate purchaser and each subsequent owner that the engine/equipment is:

(1) Designed, built, and equipped so as to conform with all applicable regulations adopted by the Air Resources Board; and

(2) Free from defects in materials and workmanship that causes the failure of a warranted part for a period of two years.

(c)Subject to certain conditions and exclusions as stated below, the warranty on emissions related parts is as follows:

(1)Any warranted part that is not scheduled for replacement as required maintenance in your **Owner's Manual** is warranted for the warranty period stated above. If the part fails during the period of warranty coverage, the part will be repaired or replaced by Tomahawk Power, LLC according to Subsection (4) below. Any such part repaired or replaced under warranty will be warranted for the remainder of the period.

(2)Any warranted part that is scheduled only for regular inspection in your **Owner's Manual** is warranted for the warranty period stated above. Any such part repaired or replaced under warranty will be warranted for the remaining warranty period.

(3)Any warranted part that is scheduled for replacement as required maintenance in your **Owner's Manual** is warranted for the period of time before the first scheduled replacement date for that part. If the part fails before the first scheduled replacement, the part will be repaired or replaced by Tomahawk Power, LLC according to Subsection (4) below. Any such part repaired or replaced under warranty will be warranted for the remainder of the period prior to the first scheduled replacement point for the part.

(4)Repair or replacement of any warranted part under the warranty provisions herein must be performed at a warranty station at no charge to the owner.

(5)Notwithstanding the provisions herein, warranty services or repair will be provided at all of our distribution centers that are franchised to service the subject small engine/equipment.

(6)The small engine/equipment owner must not be charged for diagnostic labor that leads to the determination that a warranted part is in fact defective, provided that such diagnostic work is performed at a warranty station.

(7)Tomahawk Power, LLC is liable for damages to other small engine/equipment components proximately caused by a failure under warranty of any warranted part.

(8)Throughout the small engine/equipment warranty period stated above, Tomahawk Power, LLC will maintain a supply of warranted parts sufficient to meet the expected demand for such parts.

(9) Any replacement part may be used in the performance of any warranty maintenance or repairs and must be provided without charge to the owner. Such use will not reduce the warranty obligations of Tomahawk Power, LLC

(10) Add-on or modified parts that are not exempted by the Air Resources Board may not be used. The use of any non-exempted add-on or modified parts by the ultimate purchaser will be grounds for disallowing a warranty claim. Tomahawk Power, LLC will not be liable to warrant failures of warranted parts caused by the use of a non-exempted add-on or modified part.

(11) The manufacturer issuing the warranty shall provide any documents that describe that manufacturer's warranty procedures or policies within five working days of request by the Air Resources Board.

EMISSION WARRANTY PARTS LIST

The repair or replacement of any warranted part otherwise eligible for warranty coverage may be excluded from such warranty coverage if Tomahawk Power, LLC demonstrates that the small engine/equipment has been abused, neglected, or improperly maintained and that such abuse, neglect, or improper maintenance was the direct cause of the need for repair or replacement of the part. That notwithstanding, any adjustment of a component that has a factory installed, and properly operating, adjustment limiting device is still eligible for warranty coverage. The following emissions warranty parts for each engine family list is covered.

For engine families greater than 80cc:

(1) Fuel Metering System:

(a) Gasoline carburetor assembly and its internal components

(b) Carburetor gaskets

(c) Fuel tank

(d) Fuel Line

(e) Fuel Line Fittings

(f) Clamps

(g) Pressure regulator (if equipped)

(h) Mixer assembly and its internal components (if equipped)

(2) Air Induction System including:

(a) Intake pipe/manifold

(b) Air cleaner

(3) Ignition System including:

(a) Spark plug

(b) Ignition coil

(4) Catalytic Muffler Assembly including:

(a) Muffler gasket

(b) Exhaust manifold

(c) Catalytic converter

(5) Crankcase Breather Assembly including:

(a) Breather connection tube.

(6) Fuel tank evaporative emissions control system including:

(a) Purge Valves

(b) Carbon Canister

(c) Canister Mounting Brackets

(d) Fuel Cap

(e) Fuel Tank

(7) Miscellaneous items Used in Above Systems including:

(a) Switches

(b) Hoses, belts, connectors, and assemblies.

(8) Air injection system

(a) Pulse valve

For engine families less than or equal to 80cc:

(1) Fuel Metering System:

(a) Gasoline carburetor assembly and its internal components

(b) Fuel filter (if so equipped)

(c) Carburetor gaskets

(d) Fuel pump (if so equipped)

(2) Air Induction System including:

(a) Intake pipe/manifold

(b) Air cleaner

(3) Ignition System including:

(a) Spark plug

(b) Ignition module/coil

(4) Catalytic Muffler Assembly (if so equipped) including:

(a) Muffler gasket

(b) Exhaust manifold

(5) Crankcase Breather Assembly including:

(a) Breather connection tube.

(6) Miscellaneous items Used in Above Systems including:

(a) Switches

(b) Hoses, belts, connectors, and assemblies.

(7) Fuel tank evaporative emissions control system including:

(a) Fuel Tank

The warranty is provided in accordance with the "California AND FEDERAL Emission Control Warranty Statement".

TOMAHAWK WARRANTY LIMITED WARRANTY STATEMENT

The Tomahawk Power TPS25C Concrete Sprayer is warranted to the original purchaser to be free from defects in material and workmanship from the date of purchase for the time periods listed as follows:

1 Year for Commercial Use

Any part of the TPS25C Concrete Sprayer found to be defective within the applicable warranty period shall, at Tomahawk Power's option, be repaired or replaced without charge. Warranty consideration is obtained by delivering any Tomahawk Power product to an Authorized Tomahawk Power Dealer / Service Center within the applicable warranty period. Or calling Tomahawk Power.

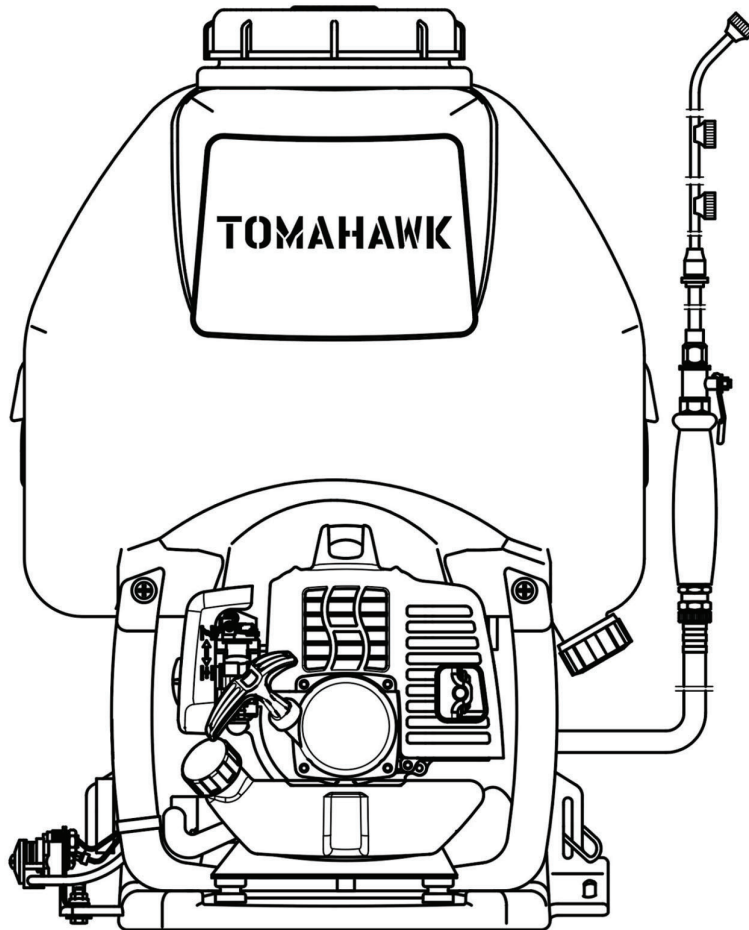
This warranty does not cover the following:

1. Maintenance items (excluding defects in materials and workmanship) including hoses, spark plugs, starter rope, air and fuel filters, clutch shoes, vibration isolators, throttle cables and all cutting attachments, etc.
2. Extra expenses including shipping and handling, travel, payment for lost time or pay and for any inconvenience and storage.
3. Alterations or modifications including aftermarket parts not authorized by Tomahawk Power, LLC.
4. Wear, accident, abuse, neglect, misuse, negligence, improper fuels, lubricants, fuel mixtures (when applicable), or failure to operate or maintain the product in accordance with instructions approved by Tomahawk. Repair or replacement as provided under this warranty is the exclusive remedy of the consumer. Tomahawk shall not be liable for any incidental or consequential damages for breach of any express or implied warranty on these products except to the extent prohibited by applicable law. Any implied warranty of merchantability or fitness for a particular purpose on these products is limited in duration to the warranty period as defined in the limited warranty statement. Tomahawk reserves the rights to change or improve the design of the product without notice and does not assume obligation to update previously manufactured products. This warranty provides you with specific legal rights, which may vary from state to state. It is the Owner's and Dealer's responsibility to make sure the Warranty Registration is properly filled out online at www.tomahawk-power.com

TOMAHAWK

TPS25C
BACKPACK CONCRETE SPRAYER

Parts Manual



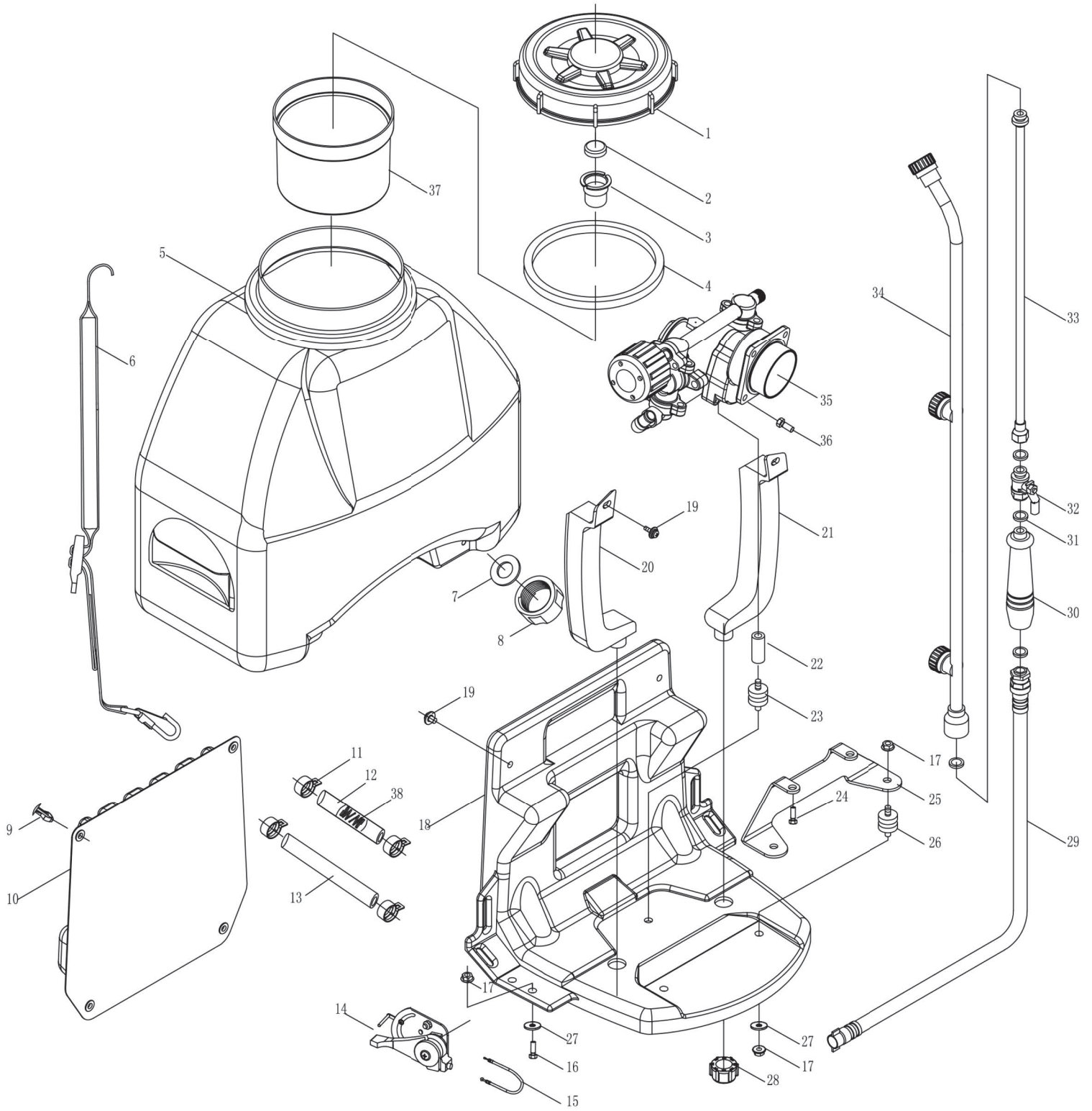
For safe operation follow all safety precautions in Instruction Manual. Improper use can cause serious injury.

⚠️ WARNING

FOR USE WITH WATER-BASED OR WATERBORNE COMPOUNDS ONLY.

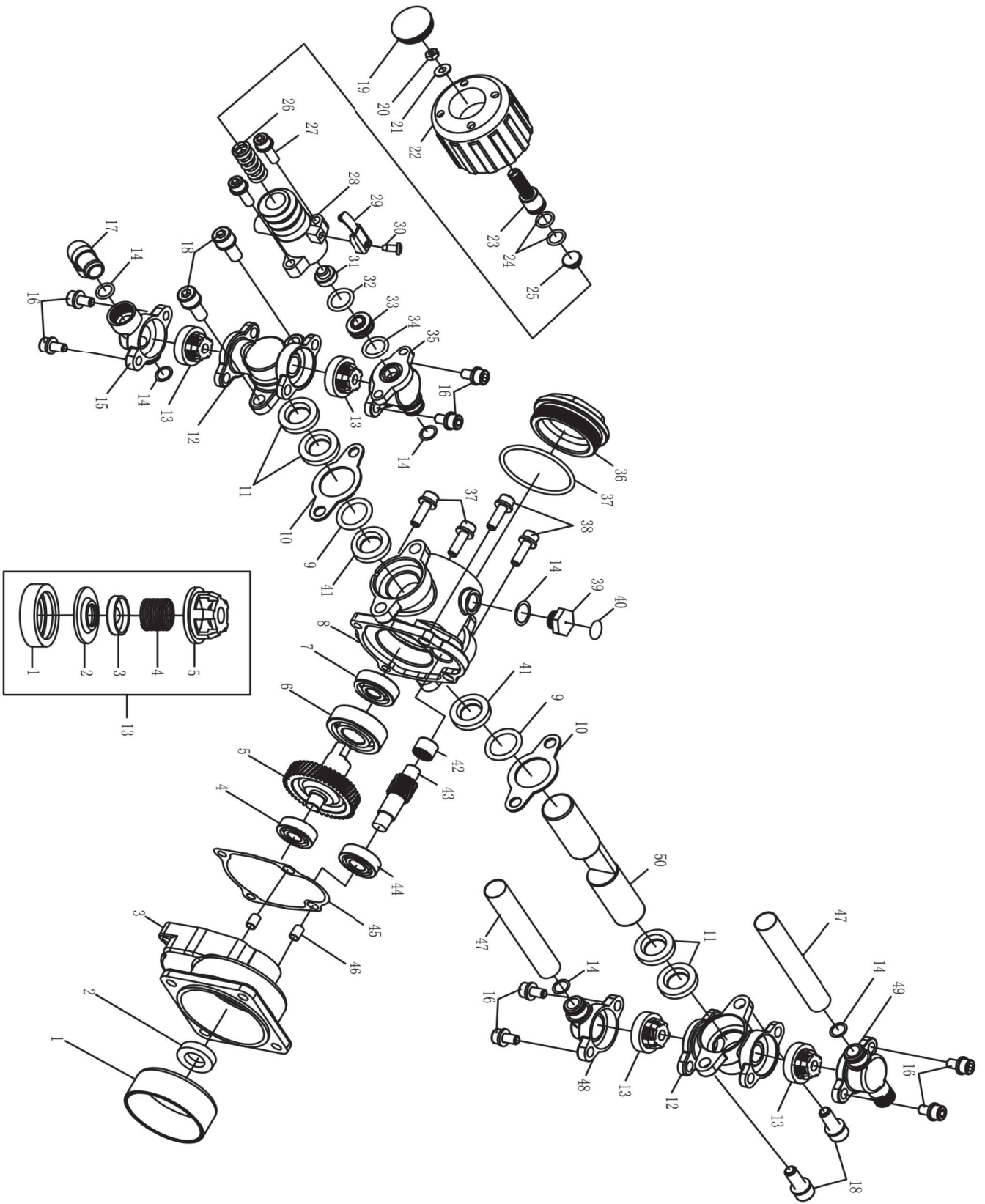
DO NOT SPRAY SOLVENT BASED OR EXPLOSIVE LIQUIDS. FAILURE TO COMPLY MAY CAUSE SERIOUS BODILY HARM OR DEATH.

READ OWNER'S MANUAL BEFORE OPERATION



NO.	Part NO.	Part Name	Qty.
1	3WZ-6.5.2-1	LID	1
2	3WZ-4.7.1-3	LID	1
3	3WZ-4.7.1-4	LID	1
4	3WF-8.1-1	SEALING WASHER	1
5	3WZ-6.5.1	CHEMICAL TANK	1
6	3WZ-9.2	BANDS ASSM	2
7	3WF-3A.1-2	SEALING WASHER	1
8	3WZ-6.5-1	LID	1
9	3WF-14-13	PLASTIC CLICK	4
10	3WZ-9.1	BACK DACK ASSM	1
11	QC/T621 Q673B15	CLIP	4
12	GB13527.1LS-10×2.5×140	TUBE	1
13	GB13527.1LS-10×2.5×340	TUBE	1
14	3WZ-9.5	SWITH	1
15	3WZ-4C.3	FREL THROTTLE	1
16	GB/T29.2+GB/T96	SCREW ASSY M6×20	2
17	GB/T6177.1 M6	NUT M6	7
18	3WZ-6-4	FRAME	1
19	GB/T823+GB/T96	SCREW M6×12	4
20	3WZ-6-9	LEFT SUPPORT	1
21	3WZ-6-5	RIGHT SUPPORT	1
22	3WZ-9-1	SUPPORT MOUNT	1
23	3WZ-7B.2B	RUBBER MOUNT	1
24	GB70+GB93+GB97	SCREW ASSEM 5×20	2
25	3WZ-6F-1C	CONNECT PLATE	1
26	3WZ-6.1	RUBBER MOUNT	2
27	GB/T 96	WASHER 6	5
28	3WZ-6-2	PLASTIC NUT	2
29	3WZ-6.6	RUBBER TUBE ASSY	1
30	3WZ-4.11	HANDLE	1
31	3WZ-4-10	SEAL RING	4
32	3WZ-4.12	VALVE	1
33	3WZ-4.13	STAIGHT SPRAYING TUBE	1
34	3WZ-4.14	LONG NOZZLE	1
35	3WZ-7B.5	PISTON PUMP	1
36	GB/T 9074.13	SCREW M6×16	4
37	3WZ-7.2.2	FILTER ASSM	1
38	3WZ-4.7.4-2A	SPRING	1



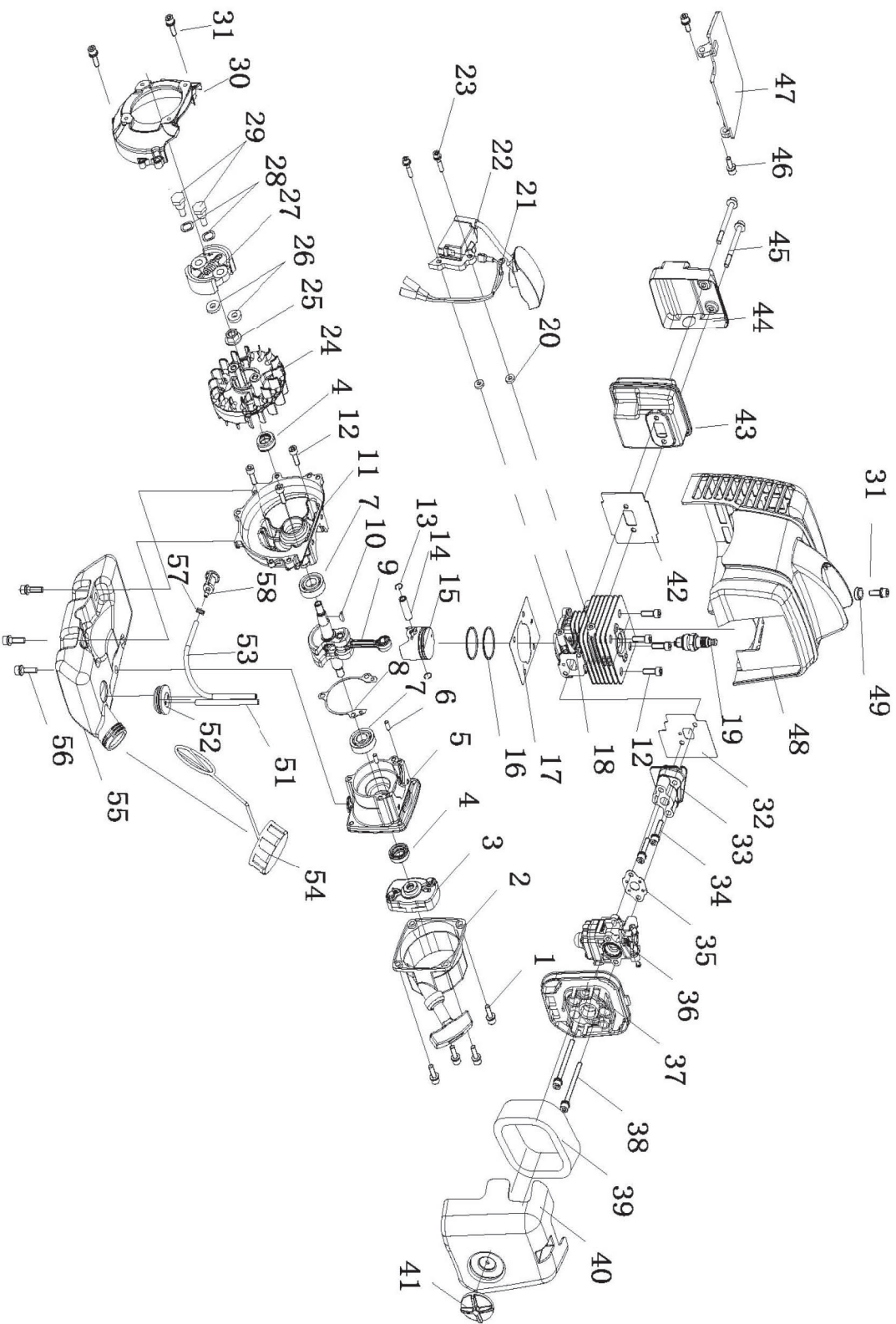


NO.	Part NO.	Part Name	Qty.
1	3WZ-7B.5-1	CLUTCH DRUM COVER	1
2	1E36F.2	SEAL	1
3	3WZ-7B.5.1-1	CONNECTING BASE	1
4	GB/T276	BEARING 6000/P6	1
5	3WZ-7B.5.1-4	WHEEL	1
6	GB/T276(17x42x12)	BEARING 6203x3	1
7	GB/T276(10x32x9)	BEARING 6200x1	1
8	3WZ-7B.5.1-2	NOUMENON	1
9	GB/T3452.1	O-RING 21.2×1.8	2
10	3WZ-7B.5-6	BAFFLE	2
11	3WZ-7B.5.3-4	WATER SEAL	4
12	3WZ-7B.5.3-3	CYLINDER STATOT	2
13	3WZ-7B.5.2A	CHECK VALVE	4
14	GB/T6659	O-RING 10×2	6
15	3WZ-7B.5.4-1	WATER CHAMBER B	1
16	GB70.1+GB93	SCREW ASSM M6X12	8
17	3WZ-7B.5-5	WATER INLET	1
18	GB70.1+GB93	SCREW ASSM M8X20	4
19	3WZ-7B.5.5-8	HANDLE CAP	1
20	GB6172	NUT M8	1
21	GB97.1	WASHER 8	1
22	3WZ-7B.5.5-1	HANDLE	1
23	3WZ-7B.5.5-3	REGULATING SCREW	1
24	GB/T6659	O-RING 10×1.8	2
25	3WZ-7B.5.5-6	SPRING SEAT 2	1
26	3WZ-7B.5.5-5	SPRING	1
27	GB70.1	SCREW ASSM M6X16	2
28	3WZ-7B.5.5-2	VALVE	1
29	3WZ-7B.5.5.1	BATTER BOARD	1
30	GB845ST4.2X10	SCREW ASSEM	1
31	3WZ-7B.5.5-4	SPRING SEAT 1	1
32	GB3452.1	O-RING 12.5×2.65	1
33	3WZ-7B.5.5-7	VALVE SEAT	1
34	GB3452.1	O-RING 11.8×1.8	1
35	3WZ-7B.5.3-2	DISCHARGE METAL A	1
36	3WZ-7B.5-3	BOX BACK COVER	1
37	GB/T3452.1	O-RING 46.2×2.65	1
38	GB70.1+GB93	SCREW ASSM M6X20	4



NO.	Part NO.	Part Name	Qty.
39	3WZ-7B.5-2A	BOLT	1
40	3WZ-7B.5-7	PASTER	1
41	3WZ-7B.5.1-7	OIL SEAL	2
42	GB/T290 HK1010	BEARING	1
43	3WZ-7B.5.1-3	GEAR SHAFT	1
44	GB/T276	BEARING 6001 P5	1
45	3WZ-7B.5.1-6	SEALING WASHER	1
46	6MF-30.1-14	PIN	2
47	3WZ-7B.5-4	TUBE	2
48	3WZ-7B.5.3-1	WATER CHAMBER A	1
49	3WZ-7B.5.4-2	DISCHARGE METAL B	1
50	3WZ-7B.5.1-5	PLUNGER	1
13-1	3WZ-7B.5.2-1	BALL SEAT	1
13-2	3WZ-7B.5.2-2	VALVE DISK	1
13-3	3WZ-7.5.2-3	VALVE BLOCK	1
13-4	3WZ-7B.5.2-4A	VALVE SPRING	1
13-5	3WZ-7B.5.2-5	VALVE BONNET	1





NO.	Part NO.	Part Name	Qty.
1	GB70.1+GB93+GB97	Screw M5×16	4
2	P23.10A	Starter	1
3	P23.9A	Guide Cover Ass'y	1
4	1E36F.2	Oil seal	2
5	P23.11-2	Crank case R	1
6	GB/T119.1	Pin 4×h8×8	2
7	GB/T276	Bearing 6001/P53	2
8	P23.11-3	Gasket crank case	1
9	P23.6A.1	Crank shaft assy	1
10	1E40FP-3Z.3-1	Key	1
11	P23.11-1	Crank case F	1
12	GB/T70.1	Screw M5×16	7
13	1E34F.6-2	Ring snap	2
14	1E31F.4-2	Piston pin	1
15	P23.6A-1	Piston	1
16	P23.6-2	Ring piston	2
17	P23-2	Gasket cylinder	1
18	P23-1	Cylinder	1
19	CMR6A	Spark plug	1
20	P40-5	Spacer lg coil	2
21	1E40F-5.3.1	Wire lead assy	1
22	HP23.2.1-SZ.2	IG coil	1
23	GB70.1+GB93+GB97	Screw M4×20	2
24	HP23.2.1-SZ.1	Rotor magnet	1
25	GB/T6177	Nut M8	1
26	1E34F-11	Wave washer	2
26A	1E34F.10	Clutch assy	1
27	1E34F-13	Washer	2
28	1E34F-12	Clutch bolt	2
29	HP23-1	Fan Cover	1
30	GB70.1+GB93+GB97	Screw M5×18	3
31	P23-7	Gasket insulator	1
32	P23.3	Insulator	1
33	GB70.1+GB93+GB97	Screw M5×25	2
34	1E36F-2A-1	Gasket carburetor	1
35	1E34F-2E.1A	Carburetor	1
36	1E34F.1.1	Cleaner base assy	1
37	GB70.1+GB97.1	Screw M5×60	2
38	1E34F.1-1	Air filter element	1



NO.	Part NO.	Part Name	Qty.
39	HP23.1-1	Cover Cleaner	1
40	1E34FG.1.1	Knob cover	1
41	1E34F-3	Gasket muffler	1
42	1E34F-2E.2	Muffler	1
43	HP23-5A	Cover	1
44	HP23-8	Screw M5×55-10.9	2
45	GB70.1+GB93+GB97	Screw M5×14	2
46	HP23-2	Clapboard	1
47	HP23.3	Top cover	1
48	1E33F-4	Spacer lg coil	1
49	GB70.1+GB93+GB97	Screw M5×18	1
50	1E44F-E.5.1-2-EPA	Fuel Pipe $\phi 5 \times \phi 2.5 \times 100$	1
51	1E36FF.8.1-1	Plug	1
52	1E44F-E.5.1-1-EPA	Fuel Pipe $\phi 5.5 \times \phi 3 \times 165$	1
53	1E32FL.6.2B	Tank cap assy	1
54	HP23.6.1	Fuel tank	1
55	GB70.1+GB93+GB97	Screw M5×16	3
56	P23.12-1	Snap Rings	1
57	P40.12.2-3A	filter	1



TOMAHAWK

Tomahawk Power, LLC
San Diego, CA

Sales Support

(866) 577-4476

sales@tomahawk-power.com

Service and Registration

support@tomahawk-power.com

www.tomahawk-power.com