

WARNING! FLAMMABLE! EYE IRRITANT! SKIN IRRITANT!

YOUR SAFETY IS VERY IMPORTANT TO US - PLEASE READ

PLEASE USE PROPERLY AND FOLLOW INSTRUCTIONS - FAILURE TO DO SO MAY RESULT IN PROPERTY DAMAGE, INJURY, OR DEATH

CHOOSING WHERE TO USE: Do not place the fire bowl under flammable objects such as umbrellas, awnings, or drapery or near combustible items such as wood structures, fuel, clothing, or dried vegetation. Do not handle fire bowl while the can is burning.

PROPER FUEL CANISTER USE: Do not use any other type of fuel other than Terra Flame Gel Fuel single use fuel cans. Dispose of canister after use - do not refill canisters. Do not attempt to handle canisters for at least five minutes after flame is extinguished.

PROPER PRODUCT USE:

- Do not smoke near gel fuel
- Keep away from open flames such as pilot lights of any object that sparks
- Keep out of reach of children
- Do not touch or move device while flames are present
- Allow five minutes for device to cool before handling
- Terra Flame canisters are designed for single use only. Never attempt to refill. Do not use Terra Flame devices with any other fuel brand than Terra Flame Gel Fuel. Proper performance with other gel fuels cannot be assured. **KEEP OUT OF REACH OF CHILDREN**
- Keep children and pets safely clear of device, particularly when flames are present. Severe burns or injury may result from improper contact with device or gel fuel. Only use an extended lighter or long fireplace match to ignite gel fuel. Do not obstruct or inhibit flame by placing anything on or above the device. Do not mix Terra Flame Gel Fuel with any other substance.

FIRST AID TREATMENT:

Fuel contains isopropanol. If swallowed, call poison control center at 800-222-1222, 9-1-1, hospital, or doctor immediately. If swallowed, dilute by drinking lots of water.

DO NOT INDUCE VOMITING

- If fuel spills on skin, immediately wash with soap and water
 - If fuel gets in eyes, rinse with cool water
 - If inhaled, move into fresh air immediately
 - If fuel spills on clothes, remove as soon as possible and wash
 - If symptoms from exposure persist, consult a doctor immediately
- Terra Flame canisters are designed for single use only. Do not attempt to refill

If fire is extinguished before fuel is gone, let stand for at least 10 minutes before attempting to re-ignite. Once can is cool, follow Terra Flame ignition procedures.

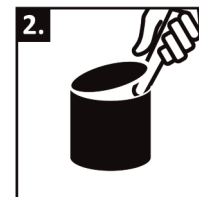
Active ingredients: Isopropanol, Ethanol, Cyclohexylamine.

This product has not been registered by the US EPA.

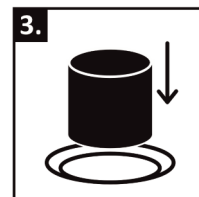
INSTRUCTIONS FOR USE



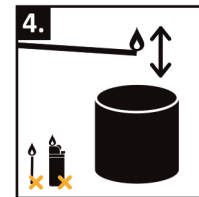
Gently shake



Open



Place in receptacle



Light & enjoy