








## OWNER'S MANUAL

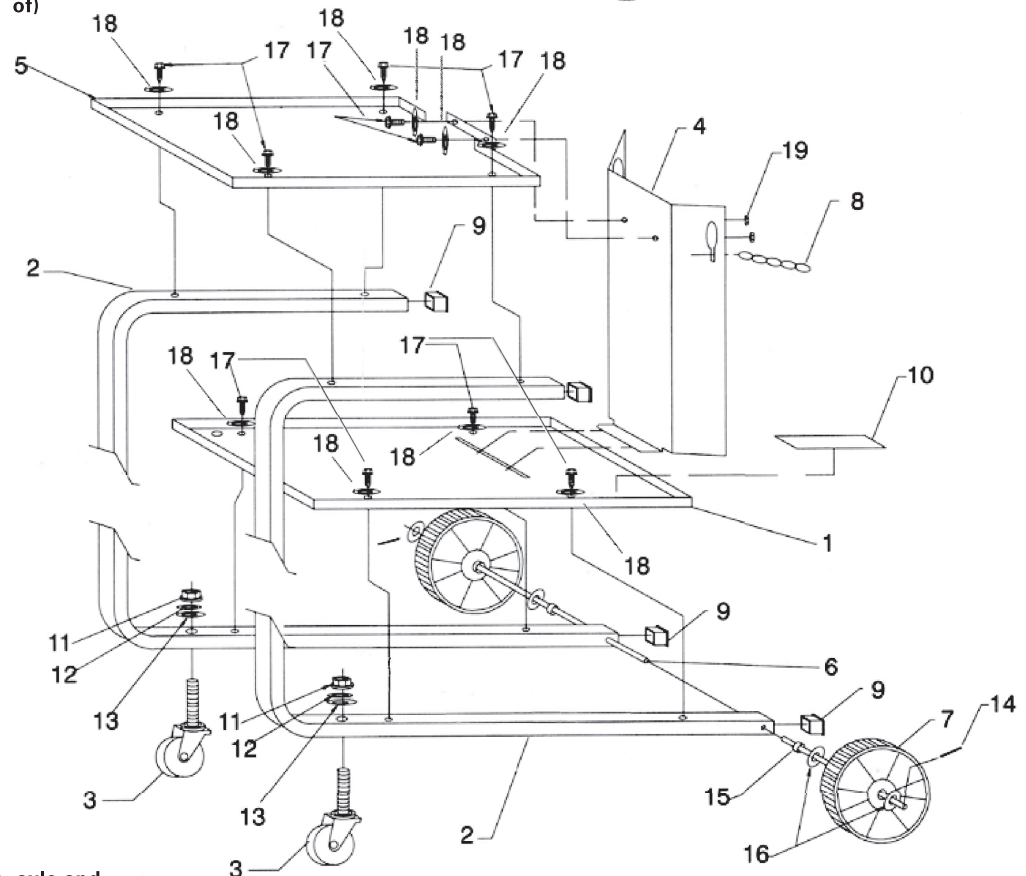
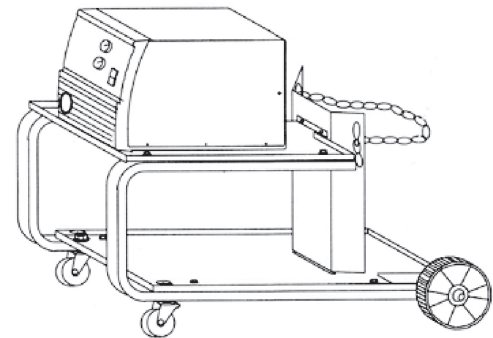
ARC WELDING CART WITH CYLINDER RACK (1661551)

<b>WARNING</b>		<p><b>ELECTRIC SHOCK can kill</b></p> <ul style="list-style-type: none"> <li>Do not touch live electrical parts.</li> <li>Turn off welding power source and input disconnect device.</li> <li>Disconnect input plug or power conductors from deenergized supply BEFORE moving welding power source.</li> </ul>		<p><b>FALLING EQUIPMENT can cause injury and damage, OVERSIZED CYLINDER can cause tipping.</b></p> <ul style="list-style-type: none"> <li>Move unit with proper handcart.</li> <li>If using a fork lift vehicle, secure unit on a skid.</li> <li>Never lift unit with cylinder attached.</li> <li>Maximum cylinder weight is 75lbs (34kgs).</li> </ul>
		<p><b>CYLINDERS can explode if damaged.</b></p> <ul style="list-style-type: none"> <li>Keep cylinders away from welding and other electrical circuits.</li> <li>Never touch cylinder with welding electrode</li> <li>Always secure cylinder to running gear, wall, or other stationary support.</li> </ul>	<p>Tools Needed</p> <div style="display: flex; justify-content: space-around; align-items: center;"> <div style="text-align: center;"> </div> <div style="text-align: center;"></div> <div style="text-align: center;"> 14 mm</div> </div>	

**Item No. Description (Qty)**

- 1 Bottom Tray (1)
- 2 Support Frame(2)
- 3 Caster (2)
- 4 Bottle Bracket (1)
- 5 Top Tray (1)
- 6 Axle (1)
- 7 Wheel, 6 in (2)
- 8 Chain, 24 in (1)
- 9 Tubing Plug (4)
- 10 Warning Label (1)
- Hardware Kit (consisting of)
  - 11 Nut, M-8(2)
  - 12 Lockwasher, M-8(2)
  - 13 Flat Washer, M-8(2)
  - 14 Cotter Pin (2)
  - 15 Spacer (2)
  - 16 Flat Washer, M-12(4)
  - 17 Screw, M-5x12(10)
  - 18 Flat Washer, M-5 (10)
  - 19 Nut, M-5(2)

Be sure to provide Model when ordering replacement parts.



**Assembly order:**

- 1 Assemble bottom tray, casters, axle and wheels to frame supports.
- 2 Install bottle bracket by hooking it through bottom tray slot.
- 3 Install top tray to frame supports and bottle bracket.