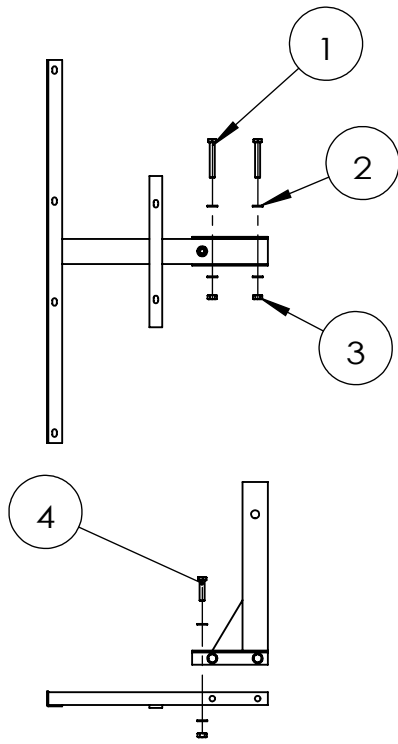


Caution ! Do Not Exceed 14 Volts when connecting power source. Over 14 volts will damage electronics and void your warranty.

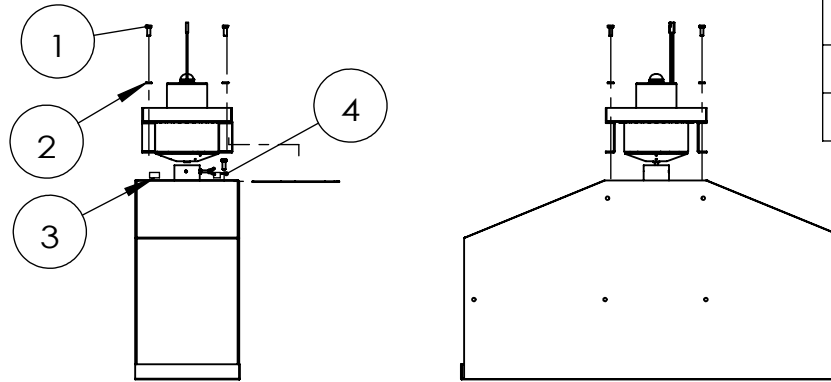
Step 1: Receiver Hitch Assembly



1		17mm HEX bolt	2PCS
2		17mm washer	6PCS
3		17mm HEX nut	3PCS
4		Phillips Head Bolt	1PCS

Insert 17mm bolts as shown with one washer on each side of the receiver hitch. Install 17mm Nylock Nuts and washers on the opposite side as shown and tighten firmly

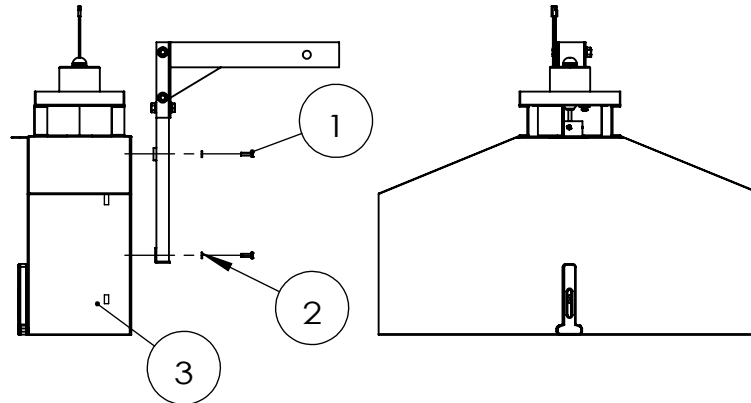
Step 2: Motor & Shroud Assembly



1		10mm HEX bolt	5PCS
2		10mm washer	8PCS
3		10mm HEX nut	5PCS
4		10mm anti slip washer	2PCS

A. Align bolt holes on motor and shroud with bolt holes in the bottom of the hopper as shown.
 B. With the lid open. Insert bolts and washers from the outside as shown. Attach washers and 6mm hex nuts from the inside using a 10mm nut driver. Tighten firmly

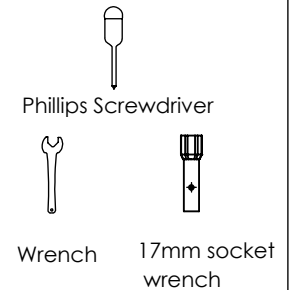
Step 3: Attach Receiver Hitch



1		10mm HEX bolt	6PCS
2		10mm washer	12PCS
3		10mm HEX nut	6PCS

A. Align holes in the receiver hitch with the holes in the back of the hopper.
 B. Install 10mm bolts and washers from the outside as shown.
 C. Install the 10mm hex nuts from the inside using a 10mm socket or nut driver.
 Tighten firmly

Tools List:

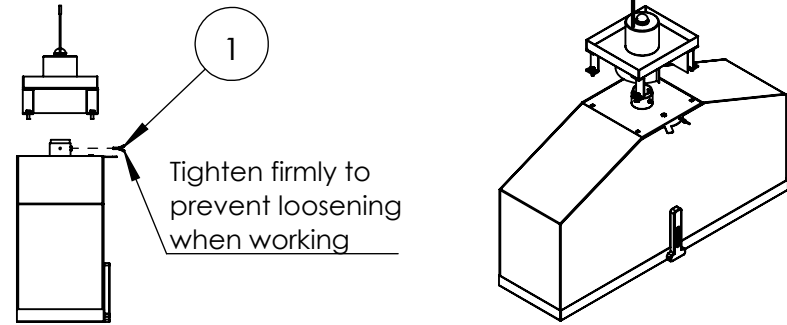


1Year Warranty

Damaged or Faulty parts are replaced exclusively by Boss Buck Products. Do not return unit to the Dealer. Contact us at 1-800-929-6244 for a return authorization number if necessary. See website www.bossbuck.com for trouble shooting issues and customer service.

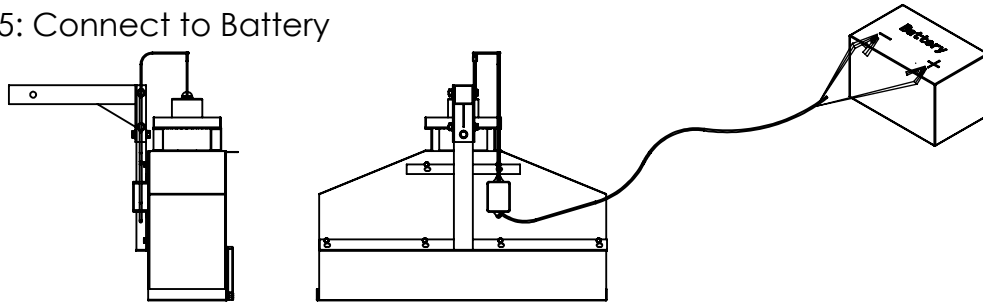
step 4: Adjustable Sleeve/Material Flow Tuning

The adjustable sleeve on the down spout helps control material flow. Based on the weight and size of the material to be broadcast. You will need to tune your spreader to your specific broadcast needs. Use the Slide Gate Valve on the hopper, and the Adjustable Sleeve above the spinner plate to customize the broadcast volume of your specific materials. Loosen the thumb bolt to shrink or widen the gap above the spinner plate. Snug thumb bolt to hold position during tuning. Once the optimum dispersal rate is achieved. Use a set of needle nose pliers to tighten thumb bolt to hold that position.



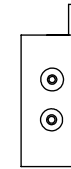
1		5mm stainless steel wing bolt	1PCS
---	---	-------------------------------	------

Step 5: Connect to Battery



Connect the red wire alligator clip to the Positive Terminal and the Black wire alligator clip to the negative terminal of your 12v battery (not supplied). Press the red button on the wireless remote (included) to engage and disengage the motor

Step 6: Installation of Remote Switch Battery



Use a small Philips Head screwdriver to remove the back of the Push Button Switch. Making sure the positive and negative poles are properly positioned. Snap the battery into the compartment inside the switch and re-assemble. Do not overtighten screws (snug).

***Caution*:** Always flush metal parts with fresh water after broadcasting corrosive materials such as salt, fertilizer, or salt based materials. Do Not submerge motor or directly spray it with water. Apply a few drops of oil around the motor shaft after flushing and spin the motor before storing. Metal parts will corrode when stored with salt residue remaining on them.

***NOTE*:** The dispersal pattern will vary depending on the weight of the material being broadcast. The broadcast pattern advertised is based on spreading whole corn.