

Product Manual



Muck Razer™

Item 580136



Table of Contents:

Product Contents	2
Assembly Instructions	3-4
Operating Instructions	5-6

Replacement Parts	7
Product Warranty	8

Important Information:

Please read these instructions thoroughly before use. Failure to follow instructions may result in equipment damage or failure, losses, injury or death.

⚠️ **WARNING:** ⚠️

To reduce the risk of injury:

- The Muck Razer is designed for cutting submerged, partially emergent, or emergent aquatic vegetation from underwater. Any other use is strictly prohibited. Before using the Muck Razer, please read this manual carefully to understand the proper use of the unit.
- The Muck Razer teeth have sharp edges.

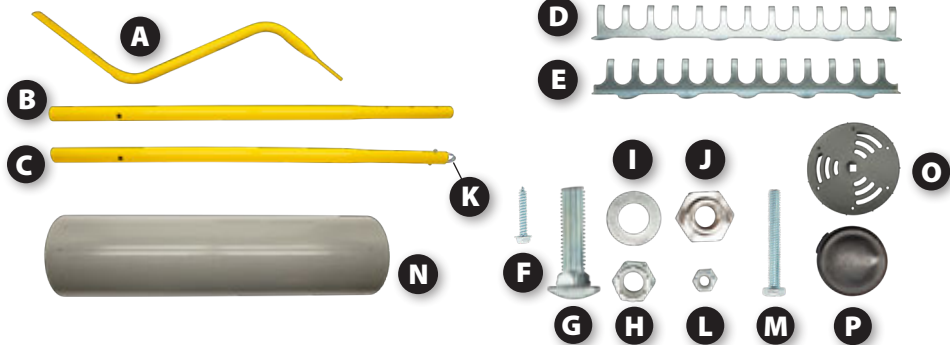
⚠️ **SAFETY FIRST:** ⚠️

Keep out of reach of children.

Do not use with children in immediate area.

IMPORTANT: Jenlis, Inc® is not responsible for equipment damage or failure, losses, injury or death resulting from failure to follow safety precautions, misuse or abuse of equipment.

PRODUCT CONTENTS:



PART	QTY	
A	Offset Handles	2
B	Main Handle	1
C	Handle Extensions	3
D	Alternating Rake Teeth Rows with 13 Teeth	6
E	Alternating Rake Teeth Rows with 12 Teeth	5
F	1/4" Hex Head Screws	22
G	Carriage Bolts	2
H	Lock Nuts	2

PART	QTY	
I	Washers	2
J	Thrust Bearings	2
K	Spring Clips (in handles)	3
L	Handle Nuts	3
M	Handle Bolts	3
N	Razer Drum	1
O	Drum End Caps	2
P	Handle End Cap	1

Assembly Instructions

Tools Required:

- 10mm Wrench
- 11mm Wrench
- Adjustable Wrench
- 1/4" Nut Driver

Step 1

Insert a Carriage Bolt (G) into the inside of each Drum End Cap (O) and thread on each Thrust Bearing (J). Tighten each Thrust Bearing securely using an adjustable end wrench.



Step 2

Next insert a Drum End Cap (O) into each end of the Razer Drum (N), then install one Offset Handle (A) onto each Carriage Bolt with the handles forming a Y shape with the cylinder in the middle. Next, slide the Main Handle (B) between the Offset Handles so that the three holes align. Insert all three Handle Bolts (M) and secure in place with Handle Nuts (L) using a 11mm wrench. Tighten the nuts only enough to prevent the handle from wobbling; overtightening the nuts will bend the handle and void the warranty.



Step 3

Install the Washers (I) and Lock Nuts (H) and tighten each just enough so that the Carriage Bolt protrudes slightly from the end of the Lock Nut. Do not overtighten the nut, as the drum needs to roll freely without resistance.



Assembly Instructions (con't)



Step 4

Align one Alternating Razer Teeth Row with 13 Teeth (D) on the Razer Drum (N) so that the two outer holes on the teeth row align with two of the outer holes on the drum. Insert a ¼" Hex Head Screw (F) into each of the outer holes **making sure that the End Caps (O) are tight up against the Razer Drum (N) when securing each fastener.** Each screw should be snug but not tightened beyond the point where it makes contact with the metal surface of each teeth row.



Step 5

Repeat the process for the next Alternating Teeth Row with 12 Teeth (E) so that the hook of the teeth points in the same direction as the first row, again making sure that the End Caps (O) are tight up against the Razer Drum (N) when installing the ¼" Hex Head Screws. Continue in the same manner alternating between the rows with 13 and 12 teeth until all teeth rows have been installed and secured in place. NOTE: The final row of teeth WILL NOT be offset from first row.



Step 6

Slide one of the Handle Extensions (C) with the spring clip into the Main Handle (B) by depressing the buttons on the spring clip and sliding it in until the holes align and the buttons lock into the holes of the Main Handle.

Step 7

Repeat this process for the two remaining Handle Extensions (C).

Step 8

Lastly, insert the Handle End Cap (P) on the last Handle Extension to close off the tube.

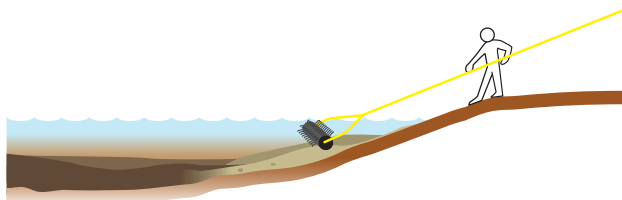
Operating Instructions

You will rarely find weeds or muck on the bottom of public beach waters; lake, river, pond or ocean bottoms in these areas are constantly stirred up by people. The Muck Razer is designed to accomplish the same thing. The Muck Razer agitates the sediment on the bottom of your pond or lake and will, in some cases, pull up existing weeds, dislodge the root systems, and aerate mucky, muddy and silty sediment. The Muck Razer is best suited for areas where the weeds have been cut and removed with the Weed Razer, Weed Raker and Razer Rake.

Muck generally accumulates from excess nutrients and limited wave action or water flow. Muck is made up of incompletely degraded organic matter. As layers of this organic matter builds up year after year, the lower layers become devoid of oxygen. The Muck Razer stirs up and agitates the lower layers and reintroduces oxygen allowing bacteria that already exists in this organic material to complete the process of digestion and helps return the bottom to a hard surface.

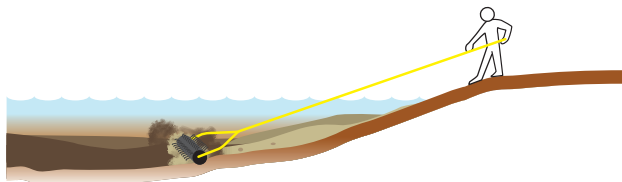
Step 1

Stand in a stable location and roll the Muck Razer head into the water. The head will fill with water, adding weight to keep it firmly on the pond or lake bottom.



Step 2

Roll the drum back and forth over the area that you wish to improve. This can be accomplished by walking with the handle in and out of the water or by pushing and pulling the drum back and forth with the handle.



Operating Instructions (con't)

Step 3

The closer you grab the handle to the drum, the more downward pressure you can apply. If you're working in an area with deep muck buildup, it will be easier to start with a smaller area and work the drum back and forth without applying downward pressure. The process may need to be repeated numerous times over an extended period of weeks to gradually reduce the muck layers.

Step 3a

The water may become cloudy creating poor visibility. Therefore, if you can't see your desired working area, you may need to stop and resume later when the cloudiness has dissipated.

Step 3b

The Muck Razer should be used regularly until the areas that you wish to address have shown improvement.

Replacement Parts

Replacement parts can be found online at www.weedrazers.com

ONE YEAR MANUFACTURER'S WARRANTY:

1-Year Manufacturer's Warranty – Jenlis, Inc. warrants this product to be free from defects in workmanship and materials, under normal, non-commercial use and conditions, for a period of (1) one year from the original invoice date. **Warranty Limitations** – Damage resulting from use in commercial environment, misuse, abuse, negligence, and/or accidents. The manufacturer agrees, at its option during the warranty period, to repair any defect in material or workmanship, or to furnish a repaired or refurbished product without charge. All warranty claims must be sent to Jenlis, at the customer's expense. Return shipping will be pre-paid. All returns must be pre-approved. Please visit www.weedrazer.com/warranty for an RMA number prior to returning product. Returns without RMA's will be refused.