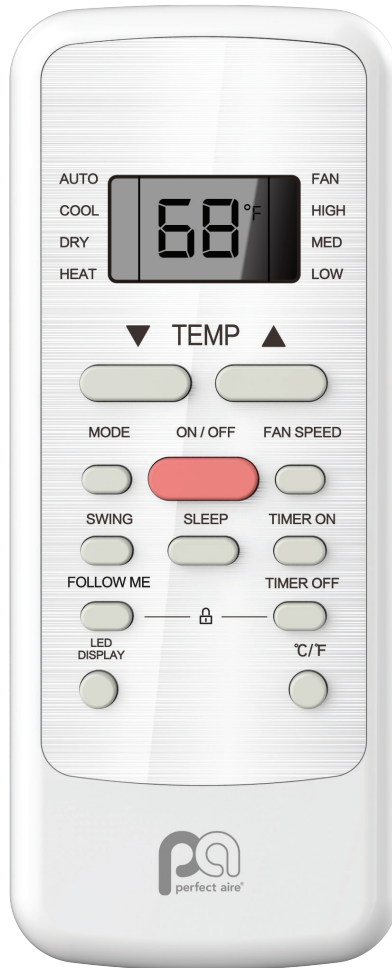




## OWNER'S MANUAL

# Portable Air Conditioner REMOTE CONTROL



**IMPORTANT:**

Thank you for your purchase. Please read this manual carefully before operating.  
Make sure to save this manual for future reference.



# TABLE OF CONTENTS

Remote Control Specifications .....	3
Handling the Remote Control .....	4
Remote Functions .....	6
Remote Screen Icons .....	7
Operating Functions .....	8

---

## FOR PORTABLE AIR CONDITIONER MODELS

2PORT9000A

2PORT10000A

2PORT12000

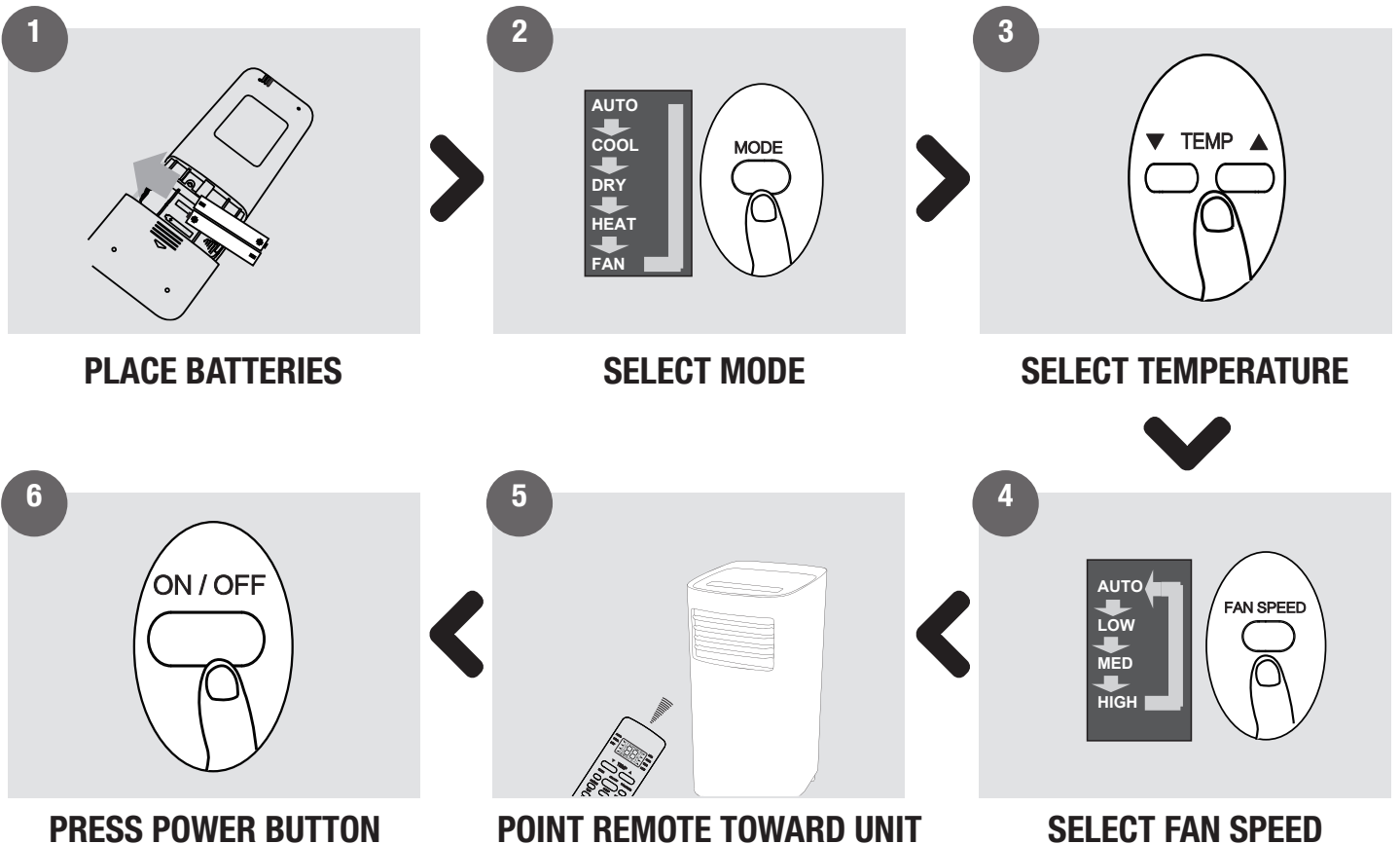
2PORT14000



# REMOTE CONTROL SPECIFICATIONS

Model	RG51F(2)/EU1
Rated Voltage	3.0V( Dry batteries R03/LR03×2)
Signal Range	26 Ft. (8 Metres)
Remote Operating Temperature	23°F~140°F (-5°C~60°C)

## Quick Start Guide



## ! ATTENTION

Refer to Operating Functions section of this manual for a detailed description of each setting.

### Note

- Button designs on your unit may differ slightly from the example shown.
- If the indoor unit does not have a particular function, pressing that function's button on the remote control will have no effect.

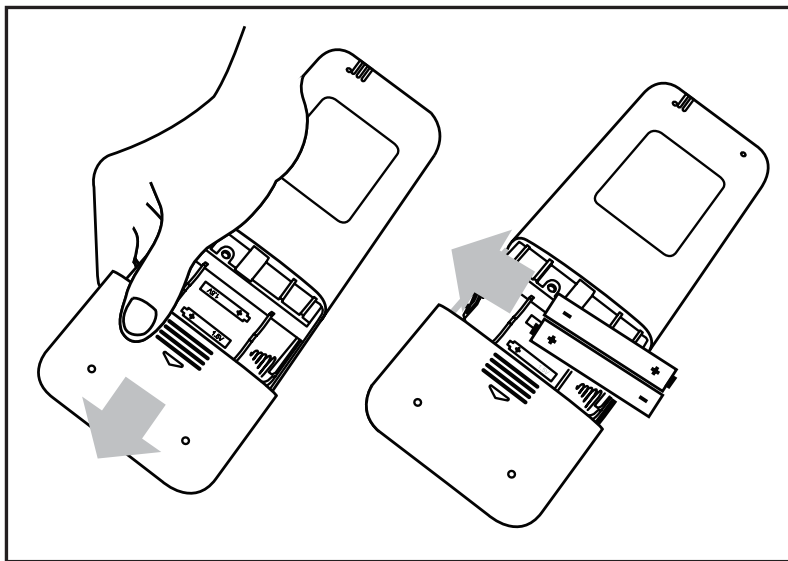
# HANDLING THE REMOTE CONTROL

## Inserting and Replacing Batteries

### Note

- 2 AAA batteries are included.
- Remove batteries from packaging and place batteries into the remote.

1. To insert batteries, slide down back cover of the remote controller to expose battery compartment.
2. Insert batteries accordingly matching the (-) and (+) terminals of the battery
3. Slide cover in the upward position to close battery compartment



### **ATTENTION**

For optimum product performance:

- Do not mix old and new batteries, or batteries of different types.
- Do not leave batteries in the remote control if you don't plan on using the device for more than 2 months.

## Battery Disposal

Do not dispose of batteries as unsorted municipal waste. Refer to local laws for proper disposal of batteries.

### Tips

- The remote control must be within 26 ft (8m) of the unit.
- The unit will beep when remote signal is received.
- Curtains, direct sunlight, amongst other objects may interfere with the IR signal receiver, assure there are no objects between remote and unit.
- Remove batteries if the remote will not be used more than 2 months.

### CAUTION

The device should comply with the local national regulations.

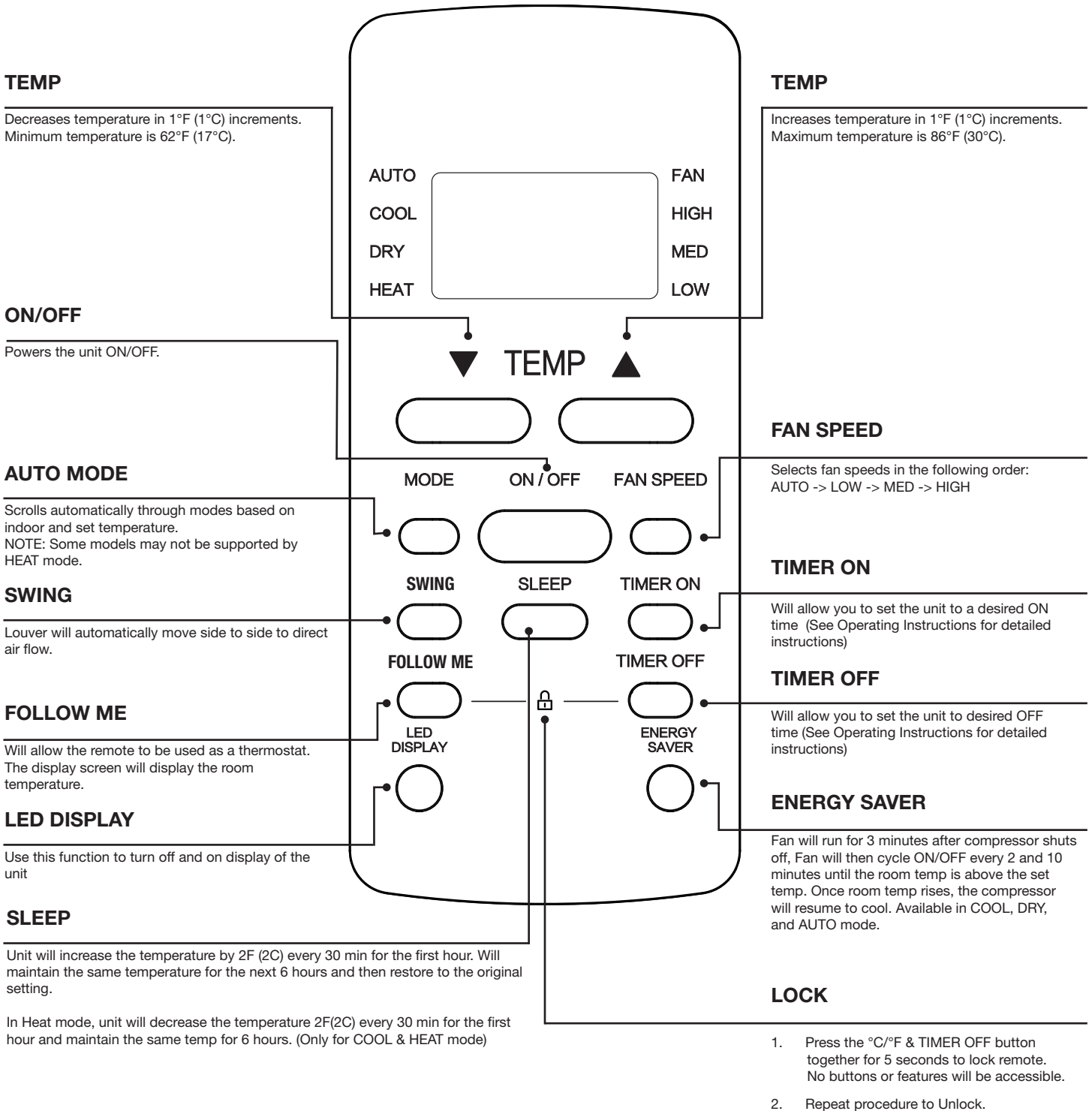
- In Canada, it should comply with CAN ICES-3(B) NMB-3(B).
- In USA, this device complies with part 15 of the FCC Rules. Operation is subject to the following two conditions:
  1. This device may not cause harmful interference, and
  2. This device may receive unwanted interference that may affect operation.

This equipment has been tested and found to comply with the limits for a Class B digital device, pursuant to part 15 of the FCC Rules. These limits are designed to provide reasonable protection against harmful interference in a residential installation. This equipment generates, uses and can radiate radio frequency energy and, if not installed and used in accordance with the instructions, may cause harmful interference to radio communications. However, there is no guarantee that interference will not occur in a particular installation. If this equipment does cause harmful interference to radio or television reception, which can be determined by turning the equipment off and on, the user is encouraged to try to correct the interference by one or more of the following measures:

- Reorient or relocate the receiving antenna. Increase the separation between the equipment and receiver.
- Connect the equipment into an outlet on a circuit different from that to which the receiver is connected.
- Consult the dealer or an experienced radio/TV technician for help.
- Changes or modifications not approved by the party responsible for compliance could void user's authority to operate the equipment.

# REMOTE FUNCTIONS

Before you begin using your new air conditioner, make sure to familiarize yourself with its remote control. The following is a brief introduction to the remote control itself. For instructions on how to operate your air conditioner, refer to the **Operating Functions** section of this manual.

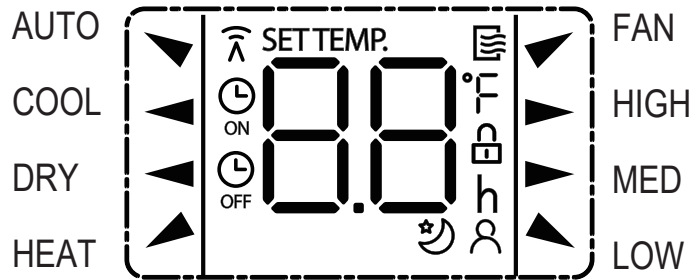


## Note

- To lock and unlock the remote, press both the FOLLOW ME & TIMER OFF button together for 5 seconds.

Model: RG51F(2)/EU1

The following icons will appear upon powering the remote.



## Mode Display

	AUTO
	COOL
	DRY
	HEAT
	FAN
	Displayed when signal is being transmitted
	Displayed when unit is turned ON
	Displayed when TIMER ON time is set
	Displayed when TIMER OFF time is set
	Will show set temp, room temp, and desired timer increments
	The lock will appear when remote buttons are locked and cannot be used
	Displayed when FOLLOW ME feature is active
	Displayed when SLEEP feature is activated

## Fan Speed Indication

	HIGH - High speed
	MED - Medium speed
	LOW - Low speed
NO Arrow Displayed	Auto fan speed

### Note

- All icons shown in the figure above are for visualization purposes only. During operation, only the selected icons will be displayed.



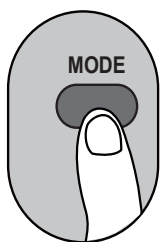
# OPERATING FUNCTIONS

## ATTENTION

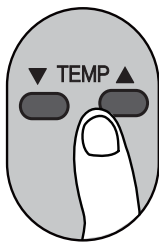
Before powering on, assure the unit is plugged in the correct outlet configuration.

### AUTO Mode

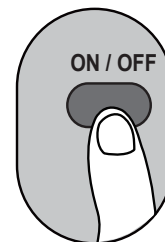
Select AUTO mode MODE.



Set your desired temperature.



Turn on the air conditioner.

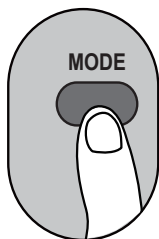


#### Note

- In auto mode will, unit will automatically cycle through modes based on indoor and set temperature. Fan speed cannot be changed.

### DRY Mode

Select DRY mode.



Set your desired temperature.



Turn on the air conditioner



#### Note

- Dry mode will work as a dehumidifier in continuous run mode and the fan speed cannot be changed.

# TIMER MODE

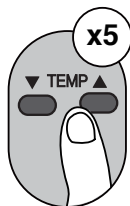
Set the desirable time in which the unit will automatically turn ON or OFF.

## TIMER ON setting

Press TIMER ON button to initiate the ON time sequence.



Using the temp up or down arrow button, select desired time to turn the unit ON.



Point remote to unit and wait 1sec, the TIMER ON will be activated.

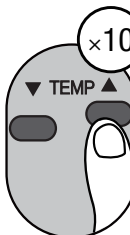


## TIMER OFF setting

Press TIMER OFF button to initiate the OFF time sequence.



Using the temp up or down arrow buttons, select desired time to turn the unit OFF



Point remote to unit and wait 1sec, the TIMER OFF will be activated.

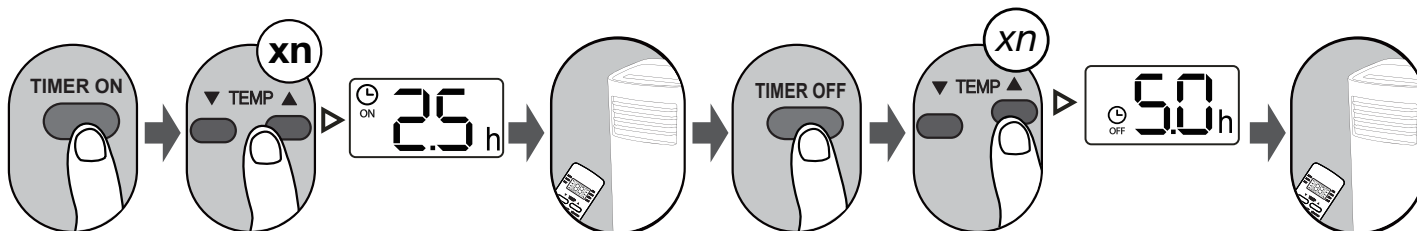


### Note

- When setting TIMER ON or TIMER OFF, increments of 30 min can be selected up to 10hours. After 10 hours, hourly increments can be made up to 24 hrs.

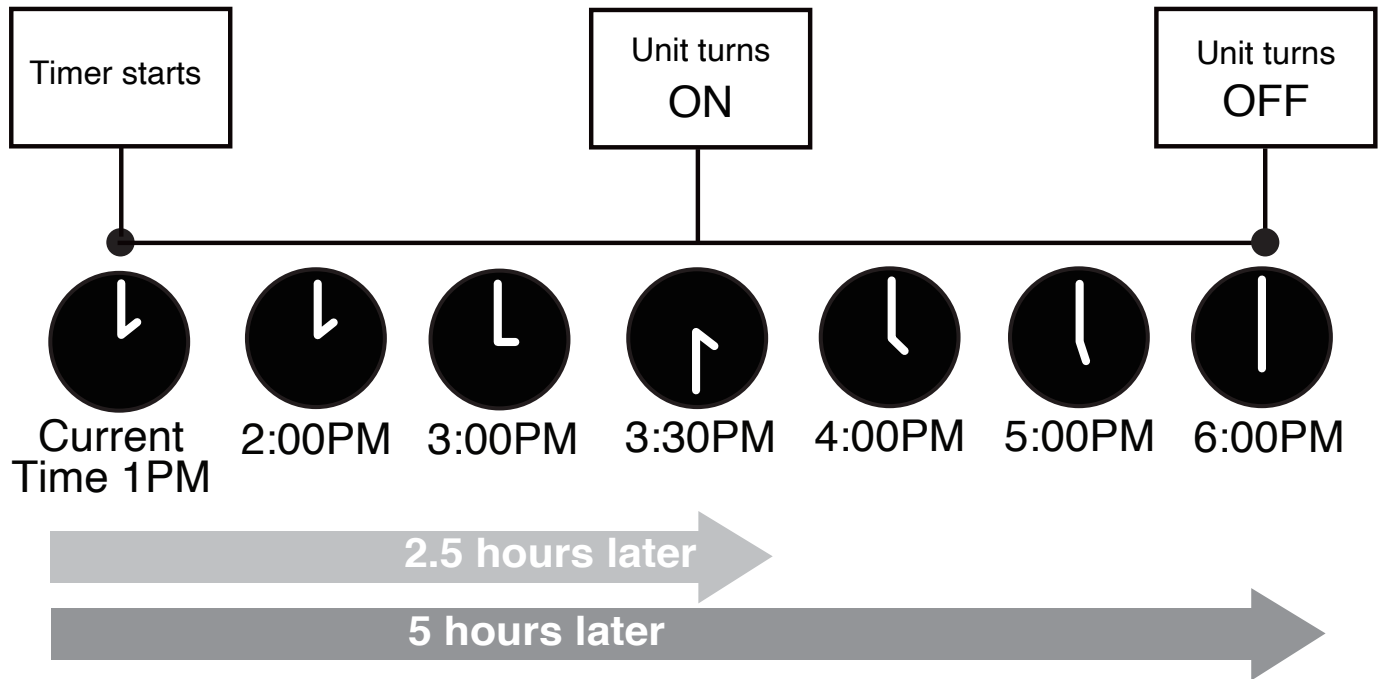
## TIMER Mode (Example)

Keep in mind that the time periods you set for both functions refer to hours after the current time.



Ex. If current time is 1:00 PM and the TIMER ON is set to 2.5Hr, and TIMER OFF at 5.0Hrs, the unit will turn on at 3:30 PM and off at 6:00 PM.

Example: Figure above shows unit being set to TURN ON at 2.5Hr and TURN OFF at 5.0 Hr.  
If current time is 1:00PM, unit will TURN ON at 3:30 and TURN OFF at 6:00.



The design and specifications are subject to change without prior notice for product improvement. Consult with the sales agency or manufacturer for details.

CR2712-RG51F(H)(1)  
16117000002421  
20200729



Perfect Aire, LLC  
5401 Dansher Road  
Countryside, IL 60625

1020\_M393

844-4PA-AIRE | 844-472-2473  
[www.perfectaire.us](http://www.perfectaire.us)

Printed in China