



# **Pail Oil Pump**

## **OWNER'S MANUAL**



### **WARNING:**

Carefully read and understand all **ASSEMBLY AND OPERATION INSTRUCTIONS** before operating. Failure to follow the safety rules and other basic safety precautions may result in serious personal injury.

**Model # STF-PHOP**

Thank you very much for choosing this product! For future reference, please complete the owner's record below:

Model: \_\_\_\_\_ Purchase Date: \_\_\_\_\_

Save the receipt, the warranty, and these instructions. It is important that you read the entire manual to become familiar with this product before you begin using it.

This product is designed for certain applications only. The manufacturer cannot be responsible for issues arising from modification. We strongly recommend that this product not be modified and/or used for any application other than that for which it was designed. If you have any questions relative to a particular application, DO NOT use the product until you have first contacted us to determine if it can, or should, be performed on the product.

For technical questions, please call **1-218-943-6290**.

## INTENDED USE

Pumping oil.

## TECHNICAL SPECIFICATIONS

Item	Description
Capacity	14 Down strokes pumps 1 quart
Hose	58" Outlet hose
	For use with oils up to SAE 140 gear oils, heavy lube oils, lubrication oils, synthetic oils

## GENERAL SAFETY RULES



**WARNING:** Read and understand all instructions. Failure to follow all instructions listed below may result in serious injury.



**CAUTION:** Do not allow persons to operate or assemble this pail pump until they have read this manual and have developed a thorough understanding of how the pail pump works.



**WARNING:** The warnings, cautions, and instructions discussed in this instruction manual cannot cover all possible conditions or situations that could occur. It must be understood by the operator that common sense and caution are factors that cannot be built into this product, but must be supplied by the operator.

## SAVE THESE INSTRUCTIONS

## WORK AREA

- **Keep work area clean**, free of clutter, and well lit. Cluttered and dark work areas can cause accidents.
- **Keep children and bystanders** away while operating a pail pump. Distractions can cause you to lose control, so visitors should remain at a safe distance from the work area.
- **Be alert of your surroundings.**

## PERSONAL SAFETY

- **Stay alert**, watch what you are doing, and use common sense when using a pail pump. Do not use a pail pump while you are tired or under the influence of drugs, alcohol, or medication. A moment of inattention while operating a pail pump may result in serious personal injury.
- **Use safety apparel and equipment.** Use safety goggles or safety glasses with side shields that comply with current national standards or, when needed, a face shield. Use a dust mask if working in dusty work conditions. This applies to all persons in the work area. Also use non-skid, safety shoes, hard hats, gloves, dust collection systems, and hearing protection when appropriate.

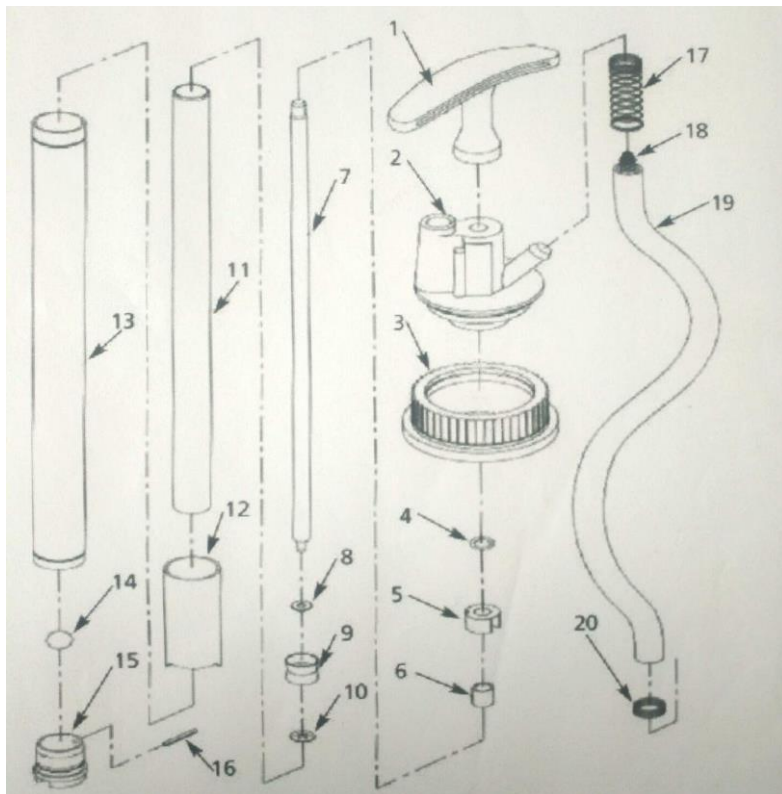
## Pail Pump USE AND CARE

- **Do not modify the pail pump in any way.** Unauthorized modification may impair the function and/or safety and could affect the life of the equipment. There are specific applications for which the pail pump was designed.
- **Always check for damaged or worn-out parts before using the pail pump** Broken parts will affect the pail pump operation. Replace or repair damaged or worn parts immediately.
- **Do not exceed the pail pump load capacity.**
- **Store idle pail pump.** When pail pump is not in use, store it in a secure place out of the reach of children. Inspect it for good working condition prior to storage and before re-use.

## MAINTENANCE

- **Maintain your pail pump.** It is recommended that the general condition of any pail pump be examined before it is used. Keep your pail pump in good repair by adopting a program of conscientious repair and maintenance. Have necessary repairs made by qualified service personnel.

# DIAGRAM & PARTS LIST



Part#	Description	Qty.	Part#	Description	Qty.
1	Handle	1	11	Inner Pipe	1
2	Tee Joint	1	12	Telescopic Duct	1
3	Tee Nut	1	13	Outer Sleeve	1
4	O-Ring	1	14	Steel Ball	1
5	Plastic Core	1	15	Lower Valve Seat	1
6	Washer	1	16	Stop Pin	1
7	Sucker Rod	1	17	Spring	1
8	Gasket	1	18	Steel Ball	1
9	Piston	1	19	Hose	1
10	Gasket	1	20	Jump Ring	1

For replacement parts and technical questions, please call **1-218-943-6290**.

## WARRANTY

**One-year limited parts warranty.**



BAC  
 PO BOX 155  
 Miltona, MN 56354  
 Made in China