

DETOUR GEL RAT REPELLENT INSTRUCTIONS

DETOUR GEL RAT REPELLENT uses organic capsaicin (hot chili pepper extract) as the active ingredient. Capsaicin works by irritating nerve-endings. Imagine the irritation one feels by eating hot chili peppers or by rubbing hot chili peppers on the skin. This is the same effect rats and mice feel when they encounter Detour Gel Rat Repellent.

Detour Gel Rat Repellent is a contact repellent and as such must come in direct physical contact with the rodent. The capsaicin is carried in a thickened food-grade mineral oil which is safe enough to eat yet will not harm humans or pollute the environment.

Detour Gel Rat Repellent repels rodents by irritating the senses which causes the animals to want to leave the immediate area. Detour Gel Rat Repellent trays work without poisons or baits. Place the trays in areas where rats and mice will make physical contact with the gel.

Detour Gel Rat Repellent will help remove rats and mice out of the area when it is used as directed.

Separate the two Detour Gel Rat Repellent trays from each other creating two separate trays. Be sure to spread the gel evenly if necessary with a putty knife, brush or spatula.

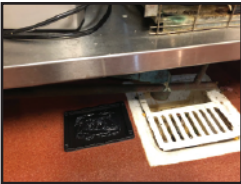


⚠ CAUTION! DO NOT TOUCH

Contains Food Grade Skin Irritant. If product touches skin, wash immediately with soap and water. If contact is made with eyes, flush immediately with water.

**Bio-Repellent Scientific Industries | Email: detourgel@twc.com
Website: www.detourgel.com**

(INSTRUCTIONS CONTINUED)



Place Detour Gel Rat Repellent trays in areas where rats and mice will likely cross over them as they move from hiding places to feeding areas. Best locations are along walls, runways, gnawed openings and near burrows where rodents are most likely to travel. Place Detour Gel Rat Repellent trays around areas where rodents may enter like both sides of doors and holes in walls. Use snap and glue traps between Detour Gel Rat Repellent trays.

Detour Gel Rat Repellent trays can be used with or without bait attractants. To use an attractant, place the rodent's favorite food right on top of the Detour Gel in the center of the tray. In this case, we have used peanuts for rats. For rats and mice, chocolate candy bars, fresh fruit or nuts.

To increase effectiveness, block passageways to force rodents to travel directly over the Detour Gel Rat Repellent trays. When placing the trays on sites such as ledges, pipes, poles, etc., secure by wiring or taping in place to ensure rodents will contact the product but will not knock the Detour Gel Rat Repellent trays off the ledge.

Place Detour trays 5 to 12 feet apart depending on infestation level. Detour Gel remains effective wet or dusty.

In greater rat infestation cases, we recommend using additional trays or purchasing a 10-ounce tube of Detour Gel for Rats. Please refer to the video links on Application of Detour Rats at www.detourgel.com

If accidental contact is made with the product, remove with soap and water or cleaning wipes as soon as possible. Keep product off skin and away from the eyes.