



DOUBLE HELIX WATER FOUNTAIN WITH LED LIGHT DW-679

Read the assembly instructions carefully and follow the care instructions.
Save these instructions for future reference.

Select a smooth, level surface to place the fountain.

**Assemble components of this fountain on a soft, clean surface
to avoid scratching or damaging the finish.**

**Over time, the paint finish may gradually mellow in color;
this is part of the natural aging process.**



Thank you for choosing Sunnydaze Decor. We stand behind our brand and the quality of the items we sell. Replacement parts or products will be sent at our discretion within the 1-year warranty period. Proof of purchase, with the date of purchase as well as photos of the merchandise defect, must be provided. Photos are used to determine the cause of defects and for future quality control.

Register your warranty at <https://tiny.cc/SunnydazeWarranty>

If you have any questions, comments or concerns, feel free to contact us by phone at **833-982-1977**, by email: customerservice@sunnydazedecor.com, or via our contact us page at <https://tiny.cc/SunnydazeContact>

Purchase Date: ___ / ___ / ___ Order/Customer Reference Number: _____

Write down the purchase date and order information to help expedite customer service inquiries.

PREPARATION:

Before beginning assembly, read all warnings and safety precautions.

⚠ WARNINGS & CAUTIONS:

WARNINGS:

To reduce the risk of electric shock, only connect the pump to a Ground Fault Circuit Interrupter (GFCI) outlet.

Do not exceed the voltage shown on the pump.

Always disconnect the pump from the power source before performing any maintenance or work on the pump, light(s) or any fountain fittings.

Inspect the pump and power cord for damage before installation and maintenance. If damage is found, the pump should be replaced.

CAUTIONS:

Use a proper power source as indicated on the pump label. Keep the cords away from high temperatures and heat sources.

Do not lift the pump by its power cord.

Keep the fountain out of reach of children.

Do not let the pump run dry. The pump must be completely submerged for proper operation and cooling.

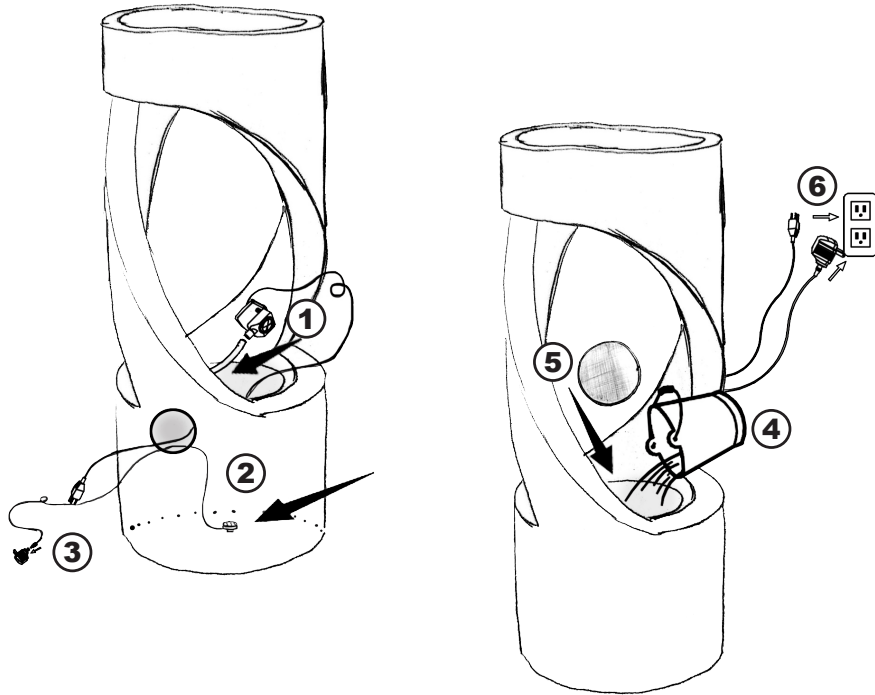
Do not pump heated liquids.

Operate with freshwater only. Avoid heavily chlorinated water and water with high PH levels.

Do not use harsh chemicals such as bleach to clean the fountain or pump.

ASSEMBLY:

Assemble components of this fountain on a soft, clean surface to avoid scratching or damaging the finish.



1. Connect the electric submersible pump to the tubing that is inside the fountain.
2. Place the LED light in the basin of the fountain and run the pump and LED light power cords through the opening in the back of the fountain.
3. Attach the AC adapter to the LED light cable.
4. Fill the fountain with enough water to keep the pump fully submerged during operation, approximately 2.5 gallons.
5. Place the splash screen into the fountain basin.
6. Plug the power cords into a properly grounded GFCI outlet.

Note: When first used, there may be air in the pump. It may take several minutes for the air to escape and water begins to flow.

! IMPORTANT INFORMATION !

USE & CARE

- Recommended for outdoor use only. Some splashing is normal; adjust the flow rate on the pump if the water rate is too high.
- Check the water level frequently to ensure the pump remains fully submerged; never allow the pump to run dry as it will burn out the motor.
- Only use water in this fountain; distilled water will help prevent mineral buildup but is not required.
- Periodically change the water to keep the water, fountain and pump clean. Remove scale and build-up regularly.
DO NOT use harmful additives such as bleach, chlorine, etc.
DO NOT use anything abrasive to scrub the fountain.
DO NOT use a pressure washer.
- Always shut off the power supply before cleaning and maintaining the fountain and the recirculating pump.
- Take care when handling the pump; only pick it up by the body of the pump, never the power cord.
- During freezing weather, drain the fountain, disconnect the pump and store indoors; allowing ice to form will damage the fountain.

TROUBLESHOOTING

- Ensure that the pump is fully submerged and add water to the basin as needed.
- Check to make sure the power outlet is working; if in doubt about electrical connections, consult a certified electrician.
- Check the pump and tubing for obstructions.
- Check the flow control on the body of the pump as it may need to be adjusted to achieve the desired flow rate.
- If the light is not working, ensure the cables are fully connected, and the seals are adequately tightened (do not over-tighten).
- If water is not flowing within several moments of the fountain being plugged in, unplug the power supply for a few moments and plug it back in; the pump may have air bubbles in the filter which can prevent water from circulating properly.

Any modification to the product or failure to follow recommended care will void the product warranty.